

Figure S3

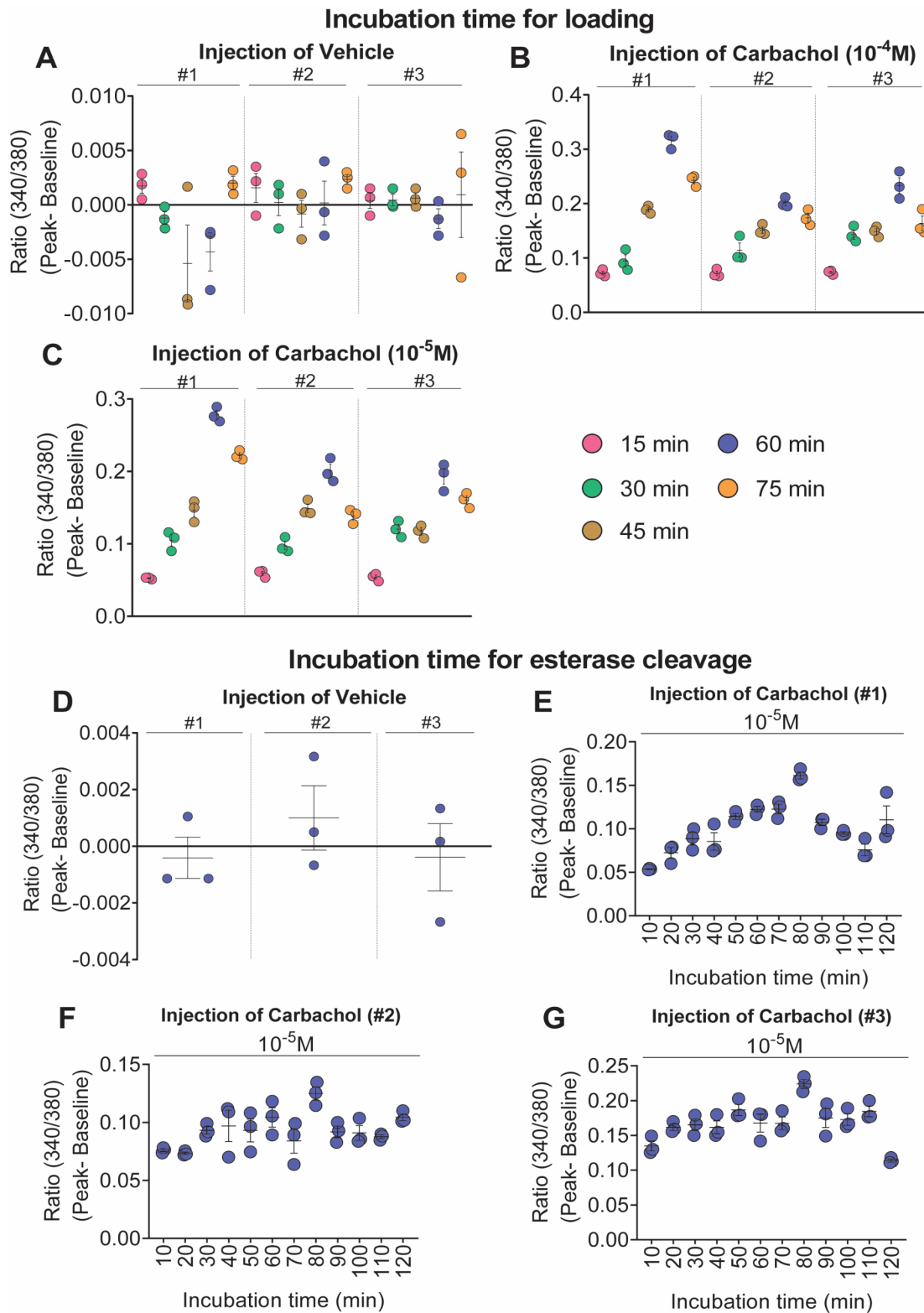


Figure S3: Optimal incubation time for Fura-2/AM loading is 60 min, and optimal incubation time for cytosolic esterase cleavage of Fura-2/AM is 80 min. Cells were tested for vehicle-induced stretch-activated calcium response (A & D) and carbachol (B, C & E-G) induced calcium signal. Data shown as mean \pm S.E.M for three independent experiments with three replicates in each experiment.