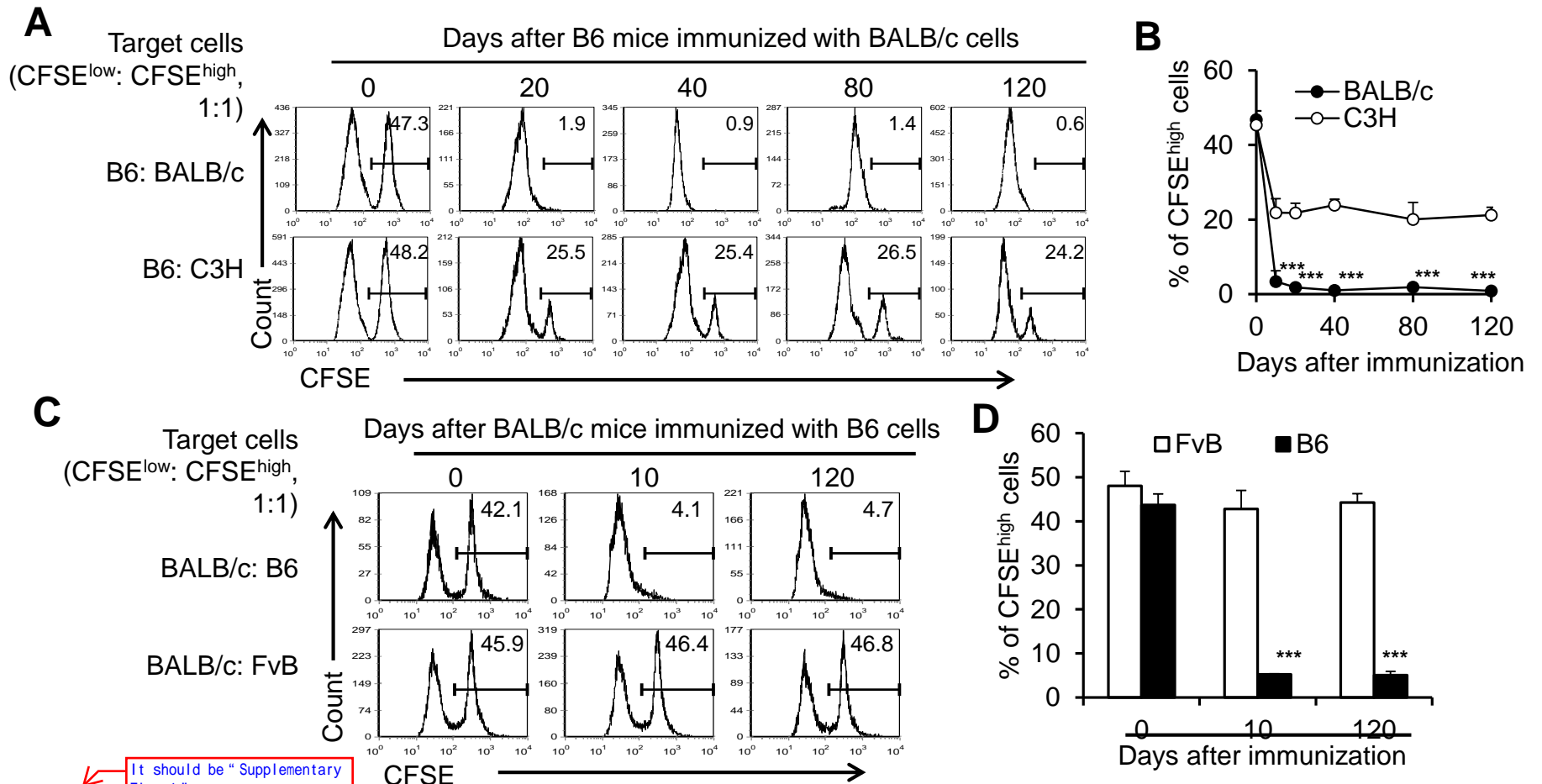


Supplementary figures

Primed macrophages gain the long term specific memory to reject allogeneic tissues in mice

Zhulang Chu^{1,2,*}, Chang Feng^{1,3,*}, Chenming Sun^{1,*}, Yanan Xu^{1,3}, Yong Zhao^{1,3,4,#}

¹ State Key Laboratory of Membrane Biology, Institute of Zoology, Chinese Academy of Sciences, Beijing 100101, China; ² Department of Pathology, School of Traditional Chinese Medicine, Beijing University of Chinese Medicine, Beijing, China; ³ University of Chinese Academy of Sciences, Beijing, China; ⁴ Institute for Stem Cell and Regeneration, Chinese Academy of Sciences, Beijing 100101, China.



It should be "Supplementary Fig. 1"

Figure 3. Primed mice rejected allogeneic splenocytes with memory

B6 mice were immunized with BALB/c splenocytes. At various days (0, 20, 40, 80, 120 days) after immunization, CFSE-labeled B6 (CFSE^{low} cells) and BALB/c or C3H (CFSE^{high} cells) splenocytes were mixed at a 1:1 ratio and intraperitoneally injected into naïve B6 mice (day 0) or BALB/c splenocytes-primed B6 mice. The survival of CFSE-labeled target splenocytes (CFSE^{low} B6 cells: CFSE^{high} BALB/c cells or CFSE^{low} B6 cells: CFSE^{high} C3H cells = 1: 1) cells (**A**) and the average percentages of CFSE^{high} BALB/c cells or C3H cells in total CFSE-labeled cells (**B**) in B6 mice immunized with BALB/c splenocytes for the indicated days was determined by flow cytometry by 24 h after detecting target cell injection. BALB/c mice were immunized with B6 splenocytes. CFSE-labeled BALB/c (CFSE^{low} cells) and B6 or FvB (CFSE^{low} cells) spleen cells were mixed at a 1:1 ratio and intraperitoneally injected into naïve BALB/c mice (day 0) or B6 splenocytes-primed BALB/c mice which were immunized with B6 splenocytes 10 or 120 days ago. The survival of CFSE-labeled cells (**C**) and the summarized percentages of CFSE^{high} FvB cells or B6 cells in total CFSE-labeled cells (**D**) in host BALB/c mice was determined by flow cytometry within 24 h after injection. ****P*<0.001 compared with the indicated groups.