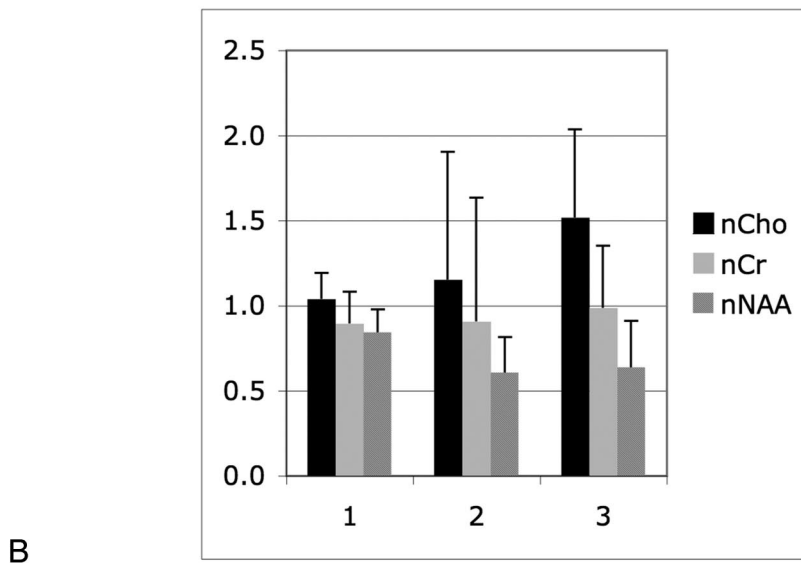
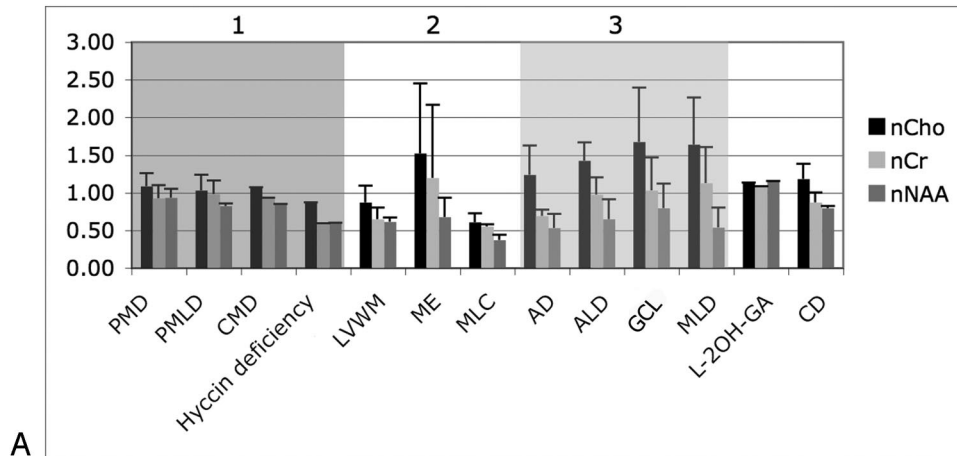


**Online Fig 1 (PDF).** Bar graph with white-matter intra-voxel ratios of Cho/NAA, Cho/Cr and NAA/Cr by diagnosis (A) and by pathophysiology (B). Groups 1, 2 and 3 correspond to hypomyelination, rarefaction and demyelination, respectively. Note that the three intra-voxel ratios differ widely among groups.



**Online Fig 2 (PDF).** Bar graph with white-matter ratios of Cho, Cr and NAA normalized to parietal gray matter by diagnosis (A) and by pathophysiology (B). Groups 1, 2 and 3 correspond to hypomyelination, rarefaction and demyelination, respectively.

