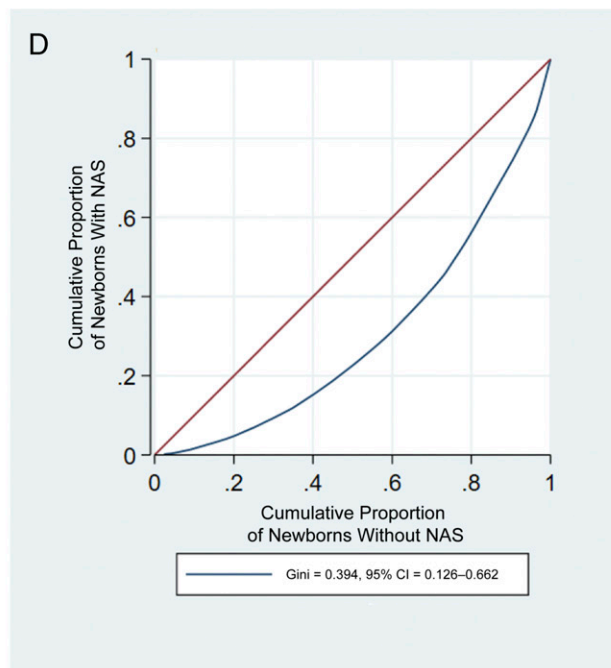
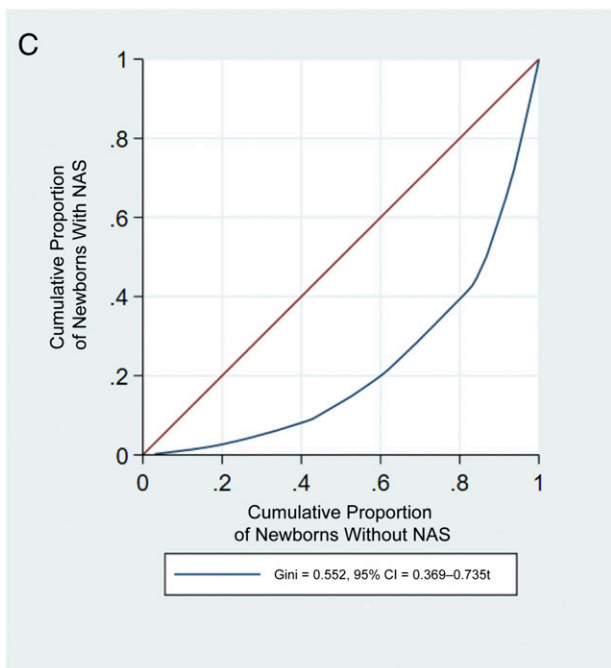
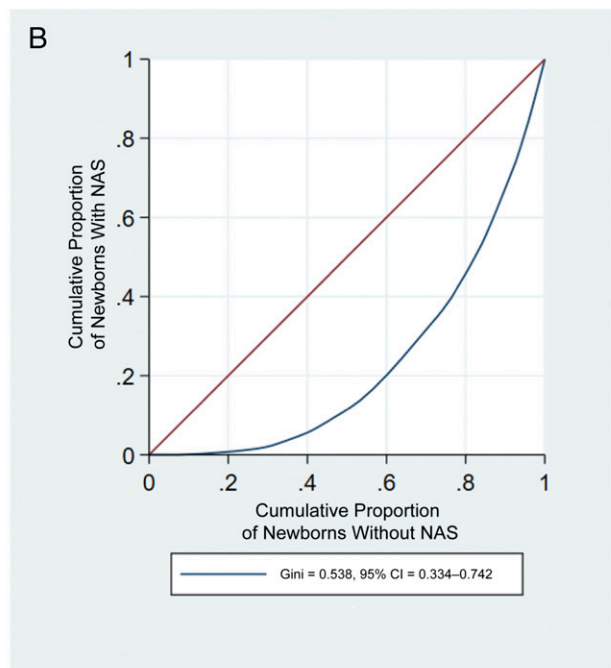
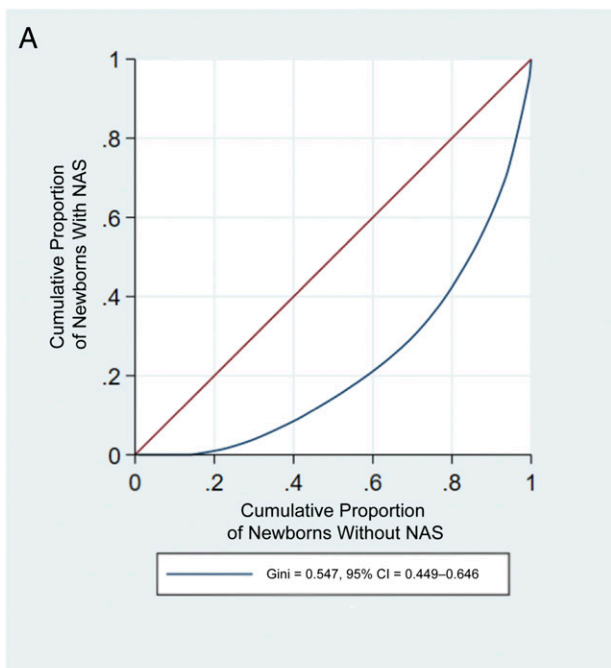


## Supplemental Information

Hospitals with a lower percentage of newborns with NAS



Hospitals with a higher percentage of newborns with NAS

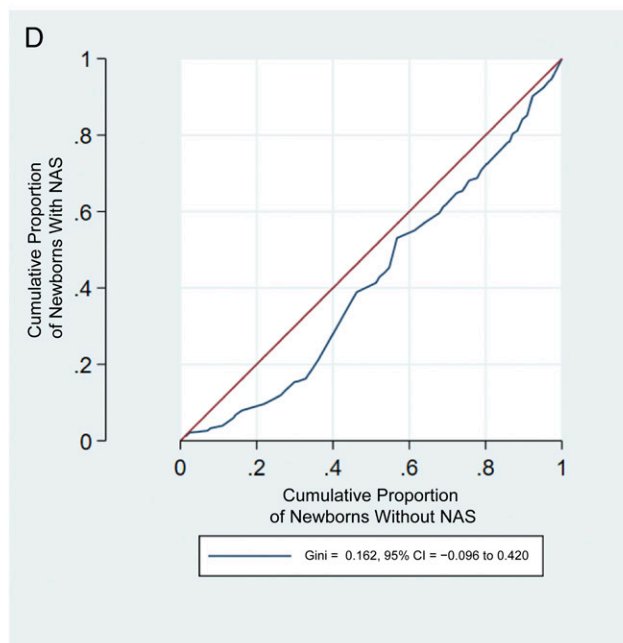
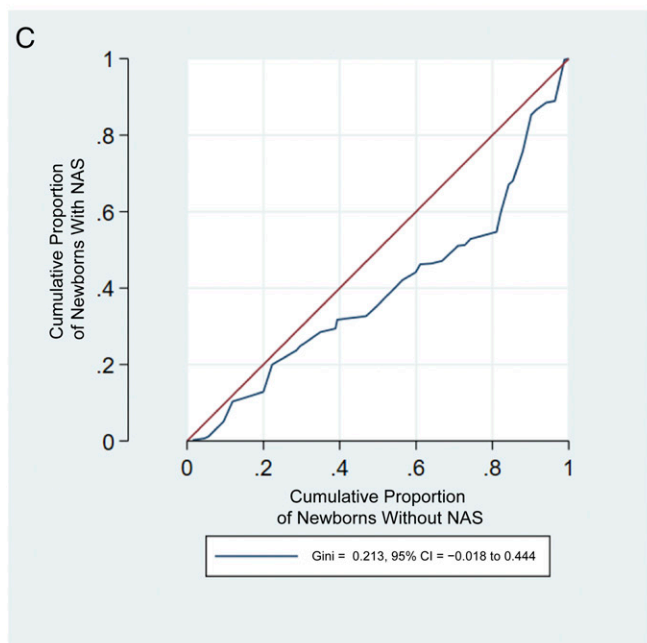
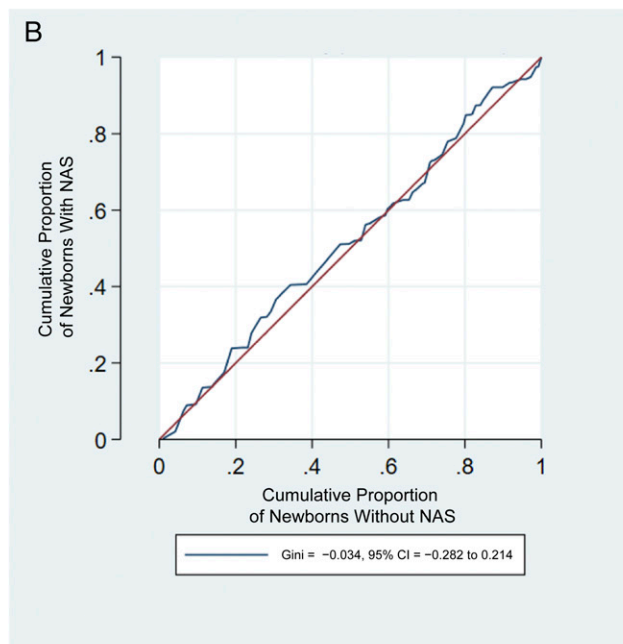
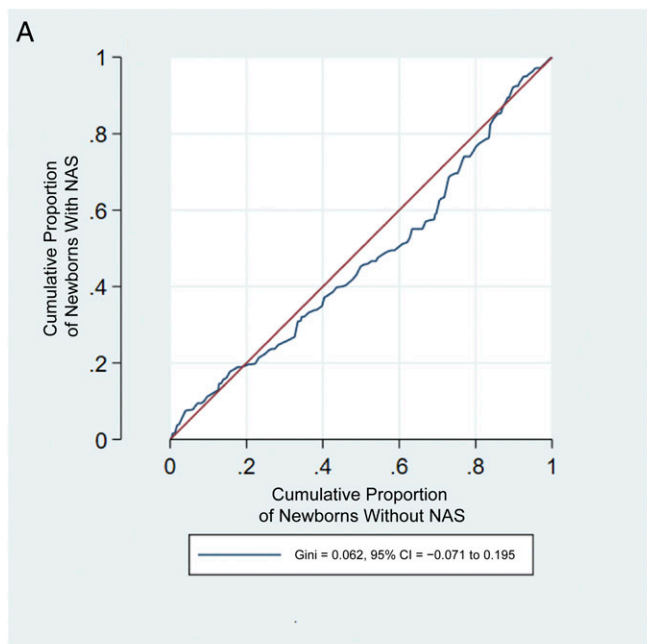


**SUPPLEMENTAL FIGURE 3** Concentration Lorenz curve by state for newborns with and without NAS. Each curve below the diagonal indicates that newborns with NAS are concentrated some hospitals as compared with newborns without NAS. A, Lorenz curves for segregation in California (sample of 320 275 newborns in 119 hospitals). B, Lorenz curves for concentration in Florida (sample of 162 682 newborns in 63 hospitals). C, Lorenz curves for concentration in New Jersey (sample of 85 909 newborns in 34 hospitals). D, Lorenz curves for concentration in Pennsylvania (sample of 90 537 newborns in 49 hospitals).

Hospitals with a higher quality  
(quality and safety) score



Hospitals with a lower quality  
(quality and safety) score



**SUPPLEMENTAL FIGURE 4** Quality Lorenz curve by state for newborns with and without NAS. The lines below the diagonal indicates that newborns with NAS are cared for in hospitals with poorer quality and safety ratings than newborns without NAS. A, Lorenz curves for quality (combined measure) in California (sample of 320 275 newborns in 119 hospitals). B, Lorenz curves for quality (combined measure) in Florida (sample of 162 682 newborns in 63 hospitals). C, Lorenz curves for quality (combined measure) in New Jersey (sample of 85 909 newborns in 34 hospitals). D, Lorenz curves for inequality (combined measure) in Pennsylvania (sample of 90 537 newborns in 49 hospitals).