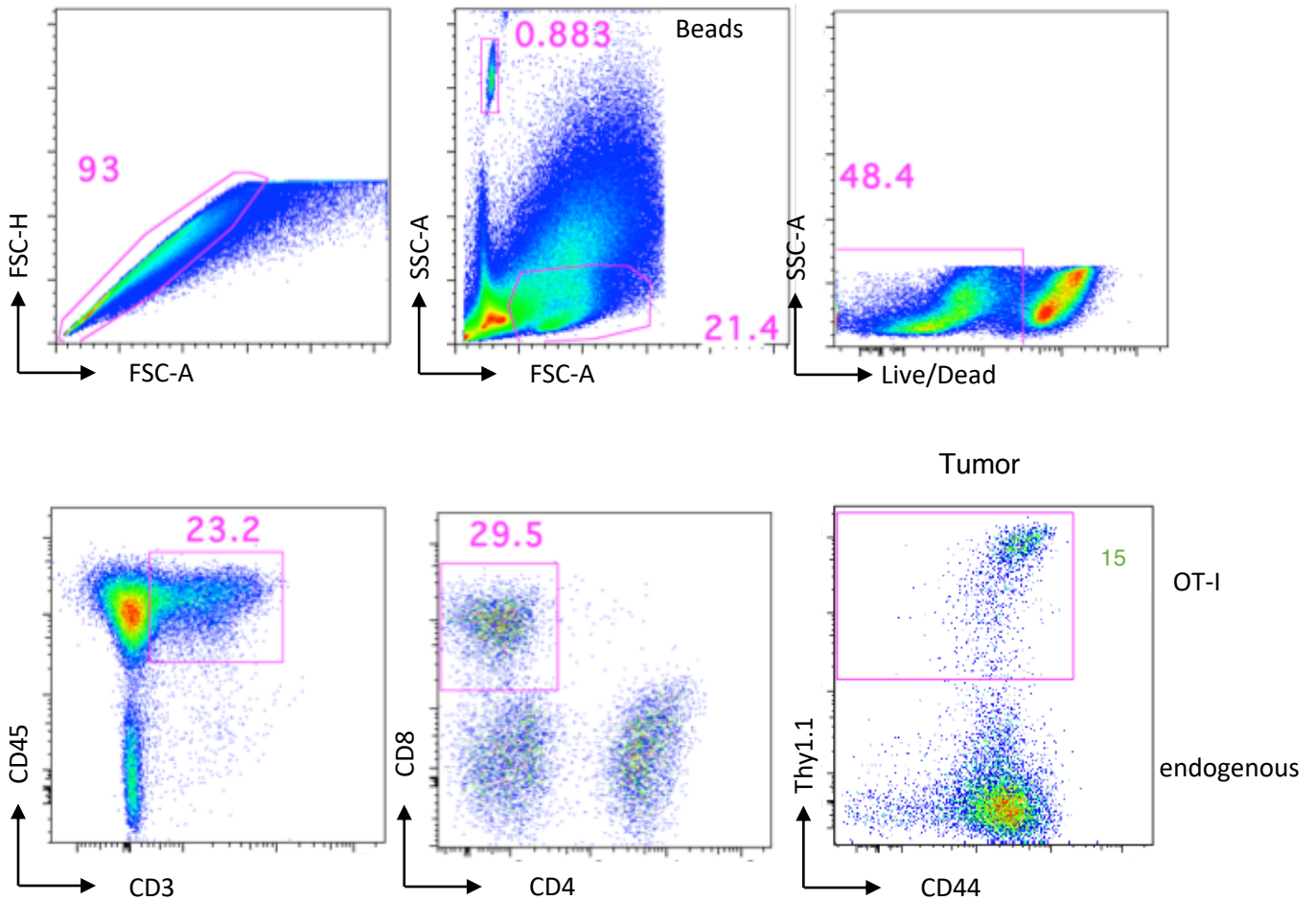


## Supplemental Figure 1



### Supplemental Figure 1. Gating strategy for tumor-specific T cells

OVA-specific CD8<sup>+</sup> T cells (OT-I) expressing the Thy1.1 congenic marker were adoptively transferred into wild type mice. One day later, LLC-OVA cells were injected into the right flanks of mice to induce cancer. Three weeks later, mice were sacrificed, and tumors collected. Lymphocytes were isolated from the tumor and assessed by flow cytometry. Cells were first gated on singlets, and then lymphocytes (and cell counting beads) were gated using SSC by FSC. A live/dead gate was then used to exclude dead cells. CD45<sup>+</sup>CD3<sup>+</sup> cells were defined as T cells. After gating on CD8, cells were gated using Thy1.1 to define the tumor-specific T cell populations (OT-I cells, Thy1.1<sup>+</sup>) and endogenous populations (Thy1.1<sup>-</sup>).