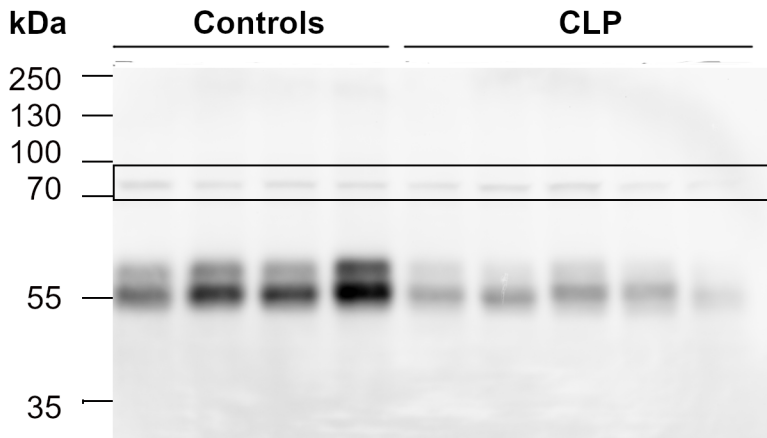


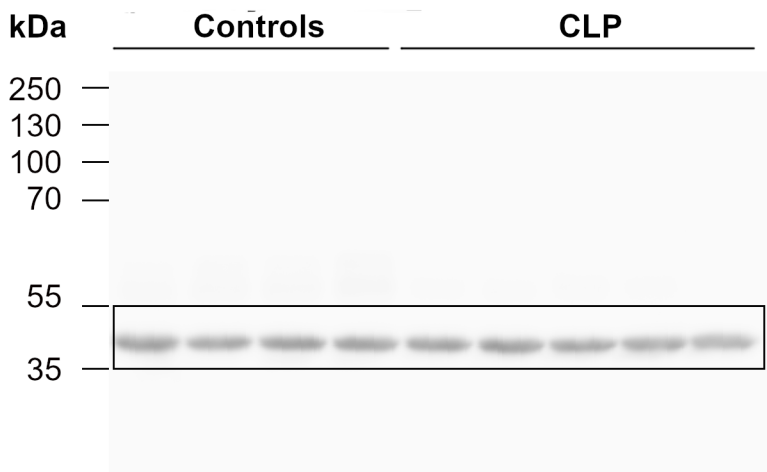
Females

Western Blot of renal total membrane fractions - Membrane 1

A) NaPi2a staining



B) β -actin staining

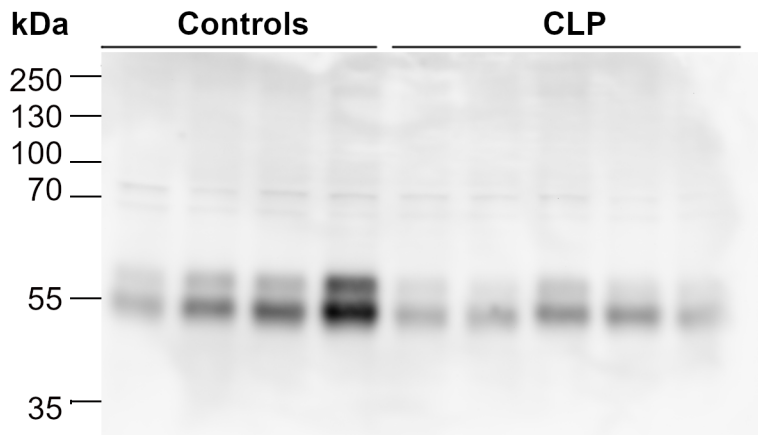


Images were captured using the Chemi Doc-It 600 Image System (UVP/Analytik Jena AG, Jena, Germany). Intensity of the protein bands was quantified by using Image Quant 5.0 software (Molecular Dynamics). Boxes indicated representative picture panels for Fig 5 in the manuscript.

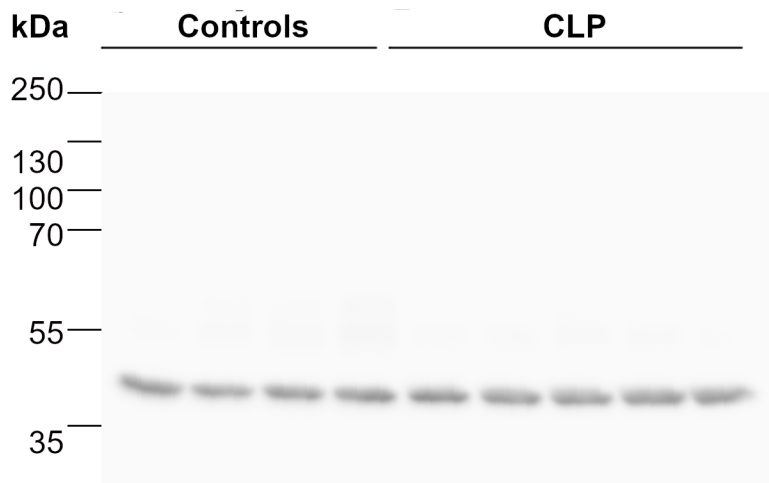
Females

Western Blot of renal total membrane fractions - Membrane 2

A) NaPi2a staining



B) β -actin staining

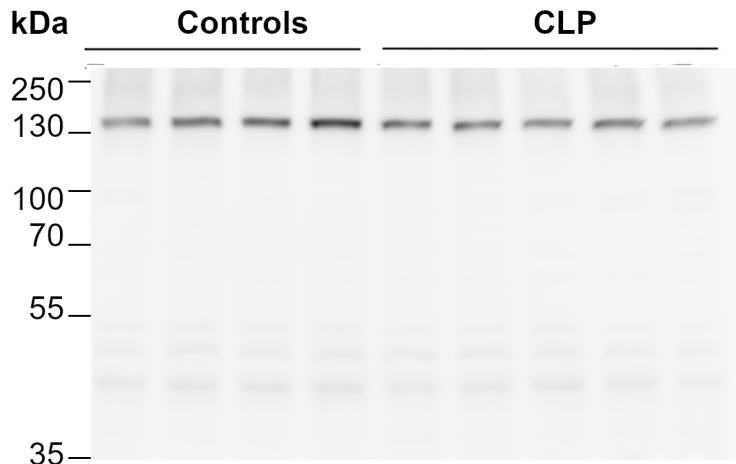


Images were captured using the Chemi Doc-It 600 Image System (UVP/Analytik Jena AG, Jena, Germany). Intensity of the protein bands was quantified by using Image Quant 5.0 software (Molecular Dynamics).

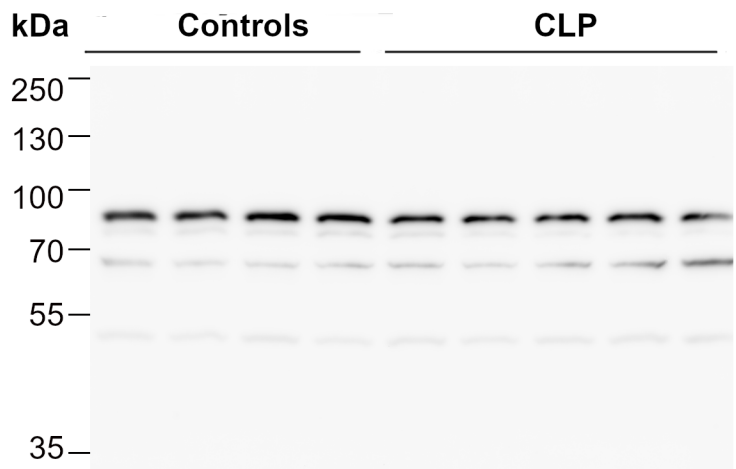
Females

Western Blot of renal total membrane fractions - Membrane 3

A) NCC staining



B) TRPV5 staining

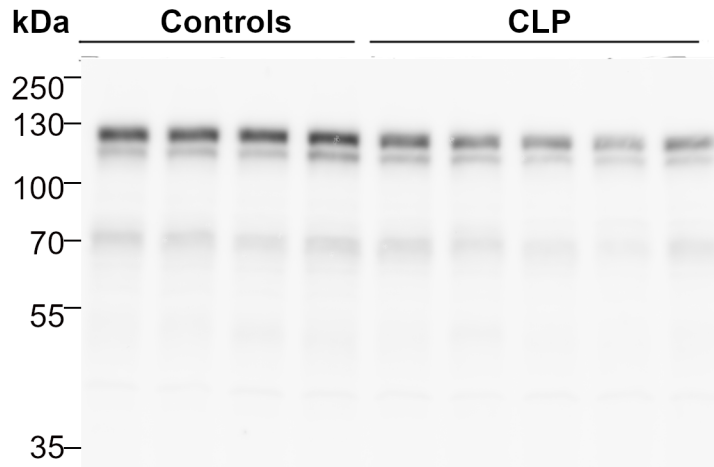


Images were captured using the Chemi Doc-It 600 Image System (UVP/Analytik Jena AG, Jena, Germany). Intensity of the protein bands was quantified by using Image Quant 5.0 software (Molecular Dynamics).

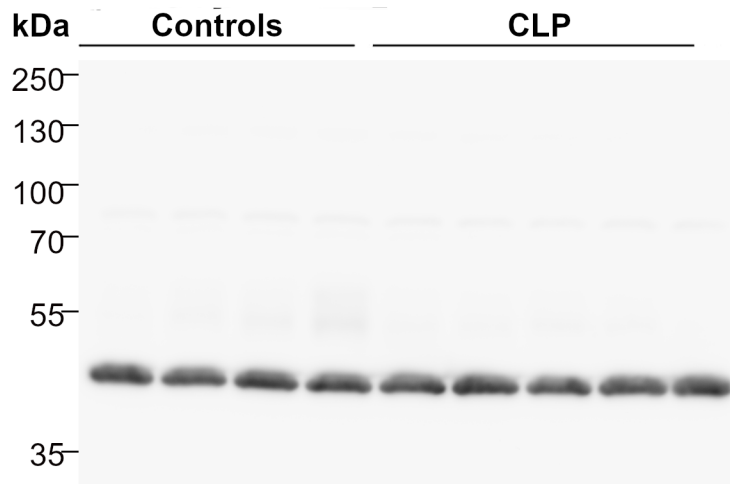
Females

Western Blot of renal total membrane fractions - Membrane 3

A) Klotho staining



B) β -actin staining

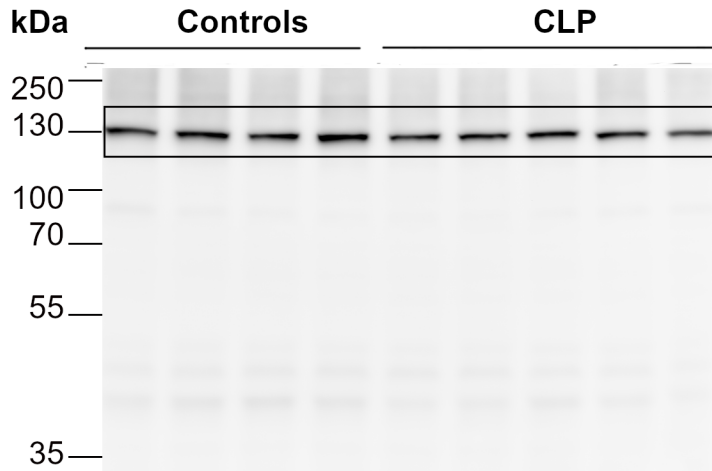


Images were captured using the Chemi Doc-It 600 Image System (UVP/Analytik Jena AG, Jena, Germany). Intensity of the protein bands was quantified by using Image Quant 5.0 software (Molecular Dynamics).

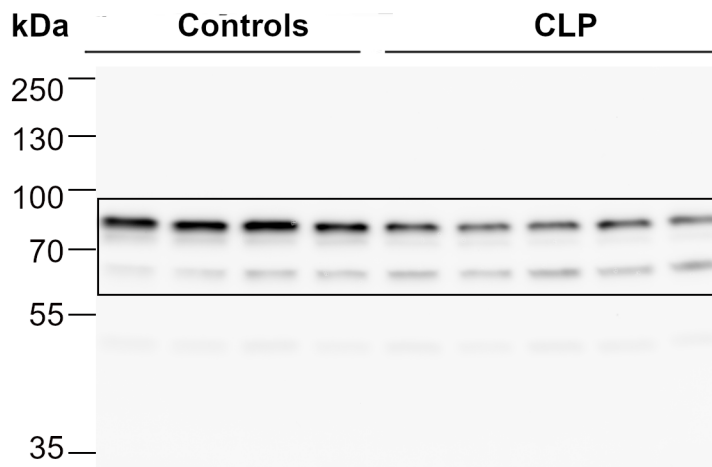
Females

Western Blot of renal total membrane fractions - Membrane 4

A) NCC staining



B) TRPV5 staining

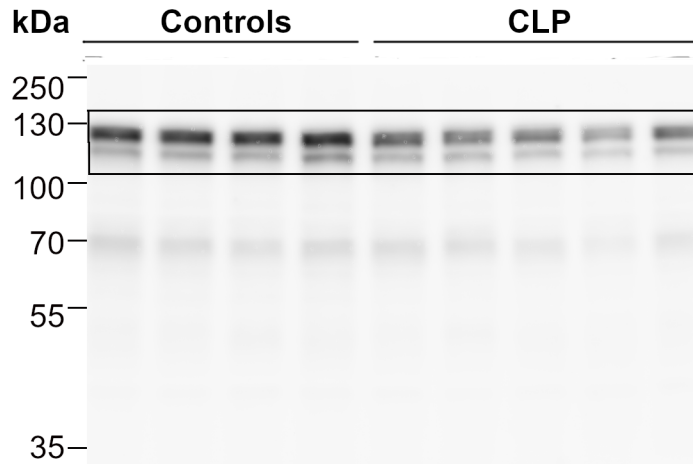


Images were captured using the Chemi Doc-It 600 Image System (UVP/Analytik Jena AG, Jena, Germany). Intensity of the protein bands was quantified by using Image Quant 5.0 software (Molecular Dynamics). Boxes indicated representative picture panels for Fig 5 in the manuscript.

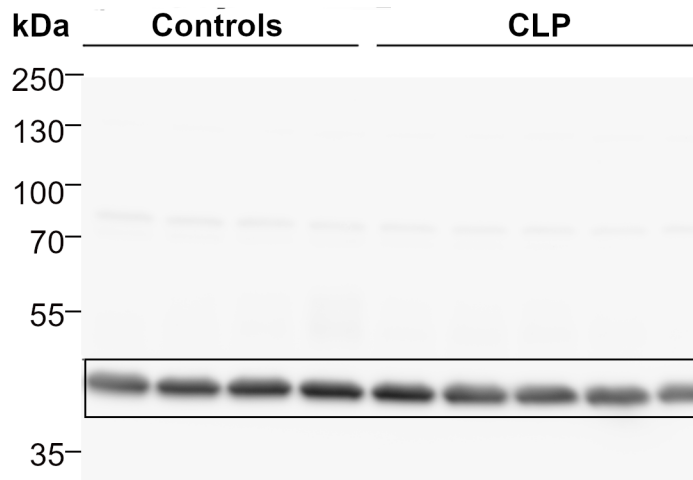
Females

Western Blot of renal total membrane fractions - Membrane 4

A) Klotho staining



B) β -actin staining



Images were captured using the Chemi Doc-It 600 Image System (UVP/Analytik Jena AG, Jena, Germany). Intensity of the protein bands was quantified by using Image Quant 5.0 software (Molecular Dynamics). Boxes indicated representative picture panels for Fig 5 in the manuscript.

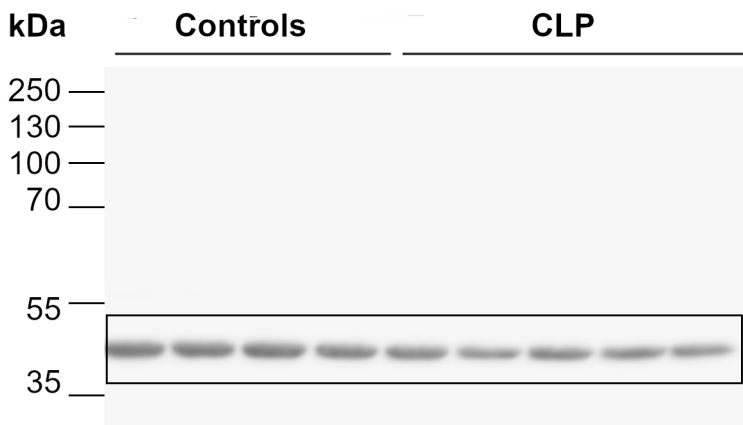
Males

Western Blot of renal total membrane fractions - Membrane 1

A) NaPi2a staining



B) β -actin staining



Images were captured using the Chemi Doc-It 600 Image System (UVP/Analytik Jena AG, Jena, Germany). Intensity of the protein bands was quantified by using Image Quant 5.0 software (Molecular Dynamics). Boxes indicated representative picture panels for Fig 5 in the manuscript.

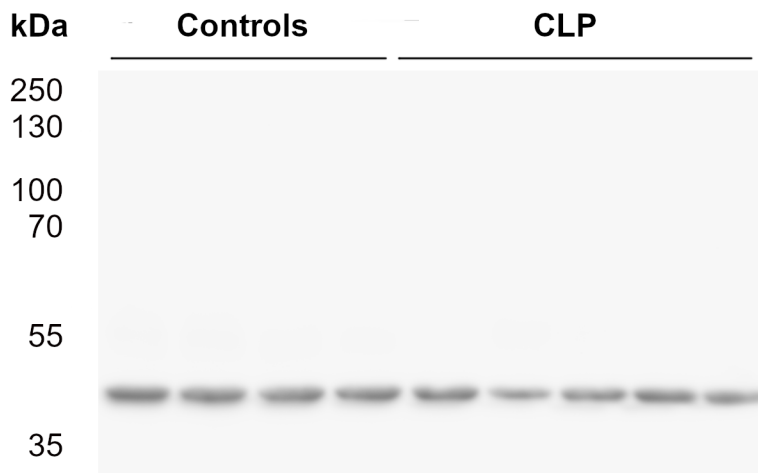
Males

Western Blot of renal total membrane fraction - Membrane 2

A) NaPi2a staining



B) β -actin staining

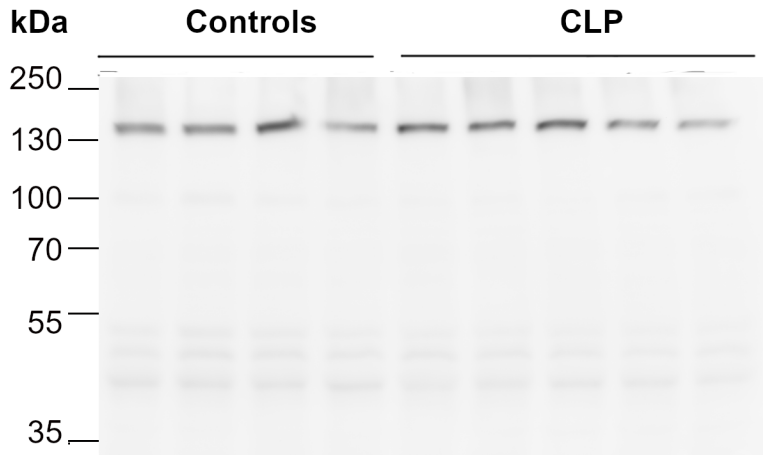


Images were captured using the Chemi Doc-It 600 Image System (UVP/Analytik Jena AG, Jena, Germany). Intensity of the protein bands was quantified by using Image Quant 5.0 software (Molecular Dynamics).

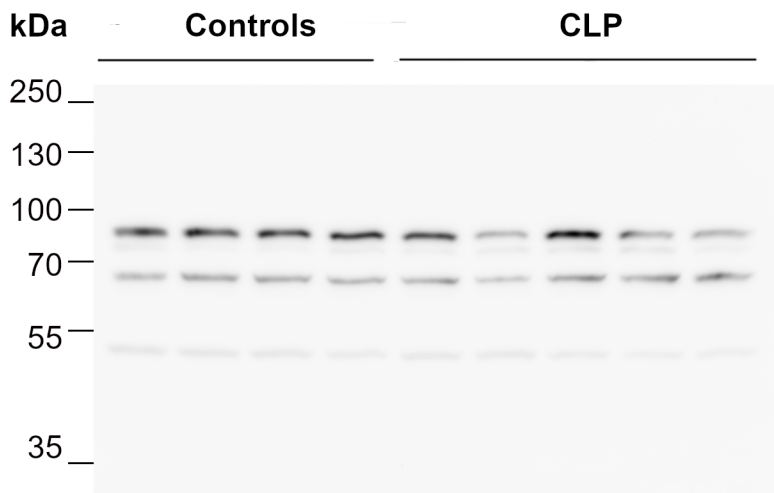
Males

Western Blot of renal total membrane fractions - Membrane 3

A) NCC staining



B) TRPV5 staining

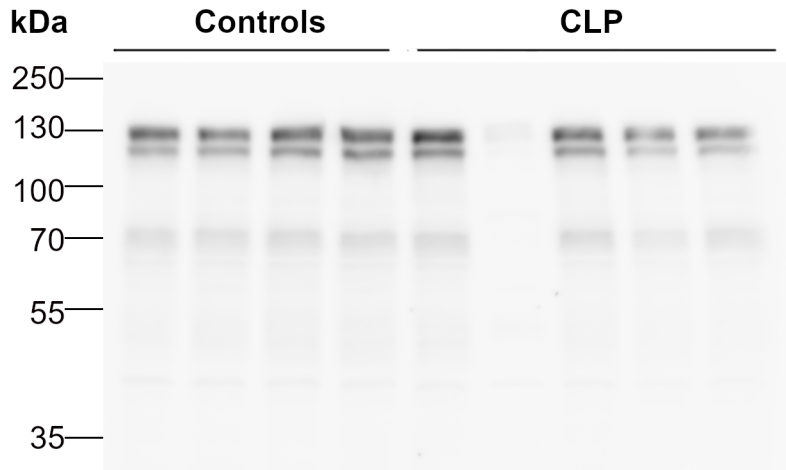


Images were captured using the Chemi Doc-It 600 Image System (UVP/Analytik Jena AG, Jena, Germany). Intensity of the protein bands was quantified by using Image Quant 5.0 software (Molecular Dynamics).

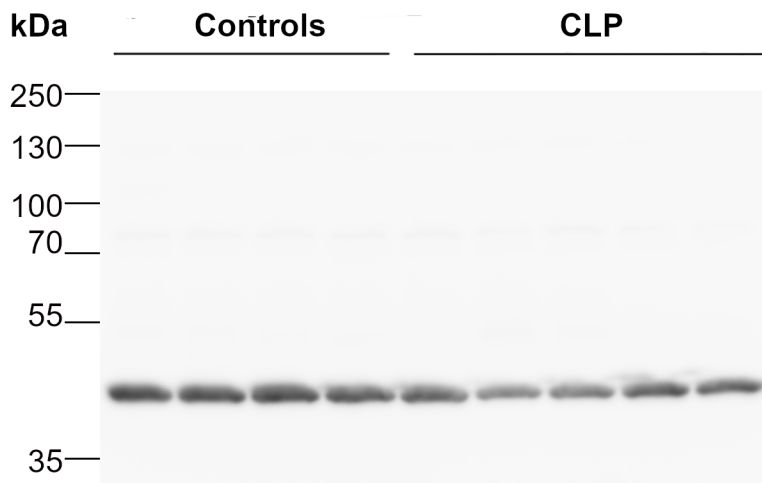
Males

Western Blot of renal total membrane fractions - Membrane 3

A) Klotho staining



B) β -actin staining

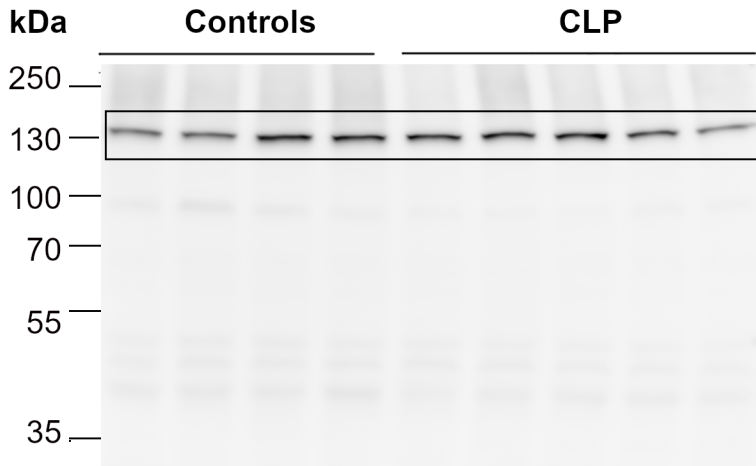


Images were captured using the Chemi Doc-It 600 Image System (UVP/Analytik Jena AG, Jena, Germany). Intensity of the protein bands was quantified by using Image Quant 5.0 software (Molecular Dynamics).

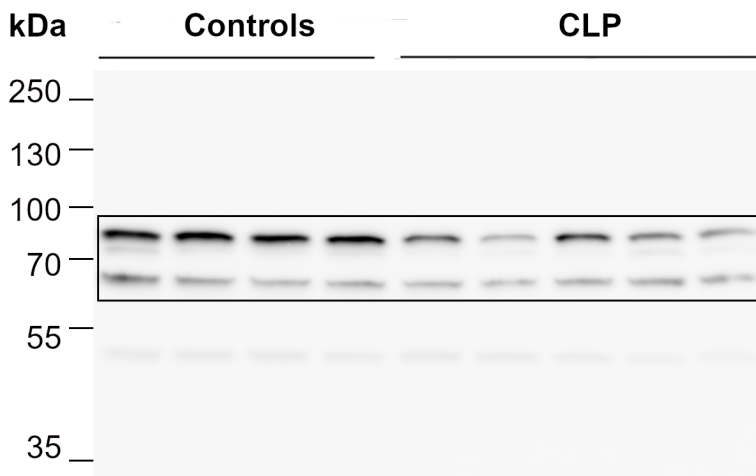
Males

Western Blot of renal total membrane fractions - Membrane 4

A) NCC staining



B) TRPV5 staining

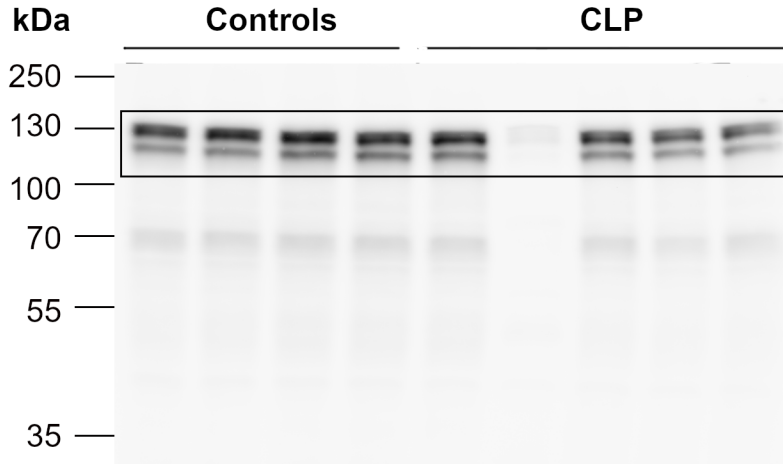


Images were captured using the Chemi Doc-It 600 Image System (UVP/Analytik Jena AG, Jena, Germany). Intensity of the protein bands was quantified by using Image Quant 5.0 software (Molecular Dynamics). Boxes indicated representative picture panels for Fig 5 in the manuscript.

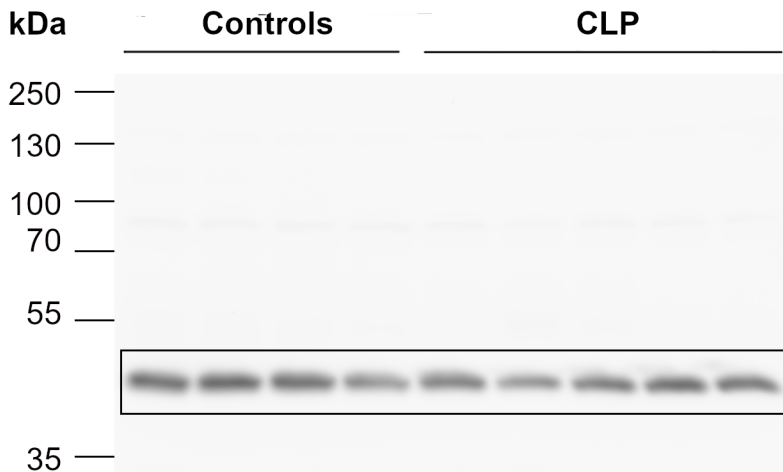
Males

Western Blot of renal total membrane fractions - Membrane 4

A) Klotho staining



B) β -actin staining



Images were captured using the Chemi Doc-It 600 Image System (UVP/Analytik Jena AG, Jena, Germany). Intensity of the protein bands was quantified by using Image Quant 5.0 software (Molecular Dynamics). Boxes indicated representative picture panels for Fig 5 in the manuscript.