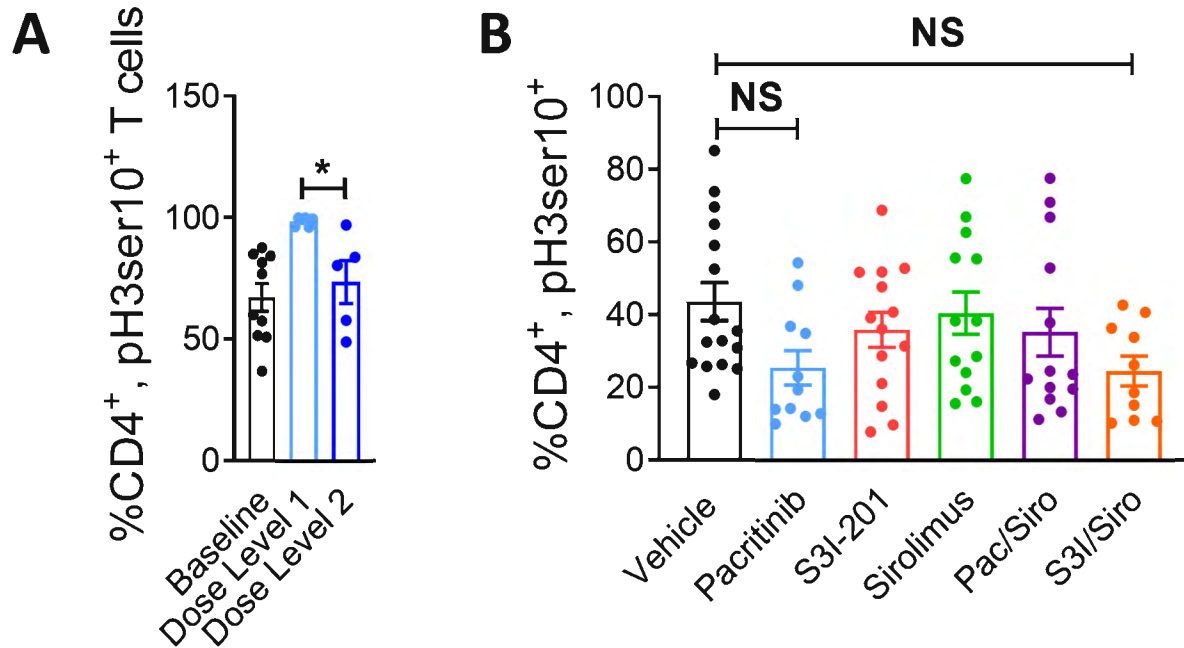


Supplemental Figure 6. CD4<sup>+</sup> T cell Aurora kinase A activation as a GVHD resistance mechanism.



A) Graph shows frequency of CD4<sup>+</sup>, pHistone 3 serine 10<sup>+</sup> (pH3ser10) (downstream of CD28, and parallel to mTOR) T cells (mean ± SEM) at day +21 among patients treated on dose level 1 or dose level 2 of the phase I trial compared to baseline control values. B) Graph depicts the frequency (mean ± SEM) of CD4<sup>+</sup>, pH3ser10<sup>+</sup> T cells recovered from NSG spleens at day +14, following transplantation with human PBMCs and then treated with vehicle, pacritinib, S3I-201, sirolimus, pacritinib plus sirolimus, or S3I-201 plus sirolimus for 2 weeks. Pooled data from 3 independent experiments is shown, up to 16 mice per group. ANOVA (A, B). \**P*<0.05. Baseline data were acquired pretransplant between days -30 and -5.