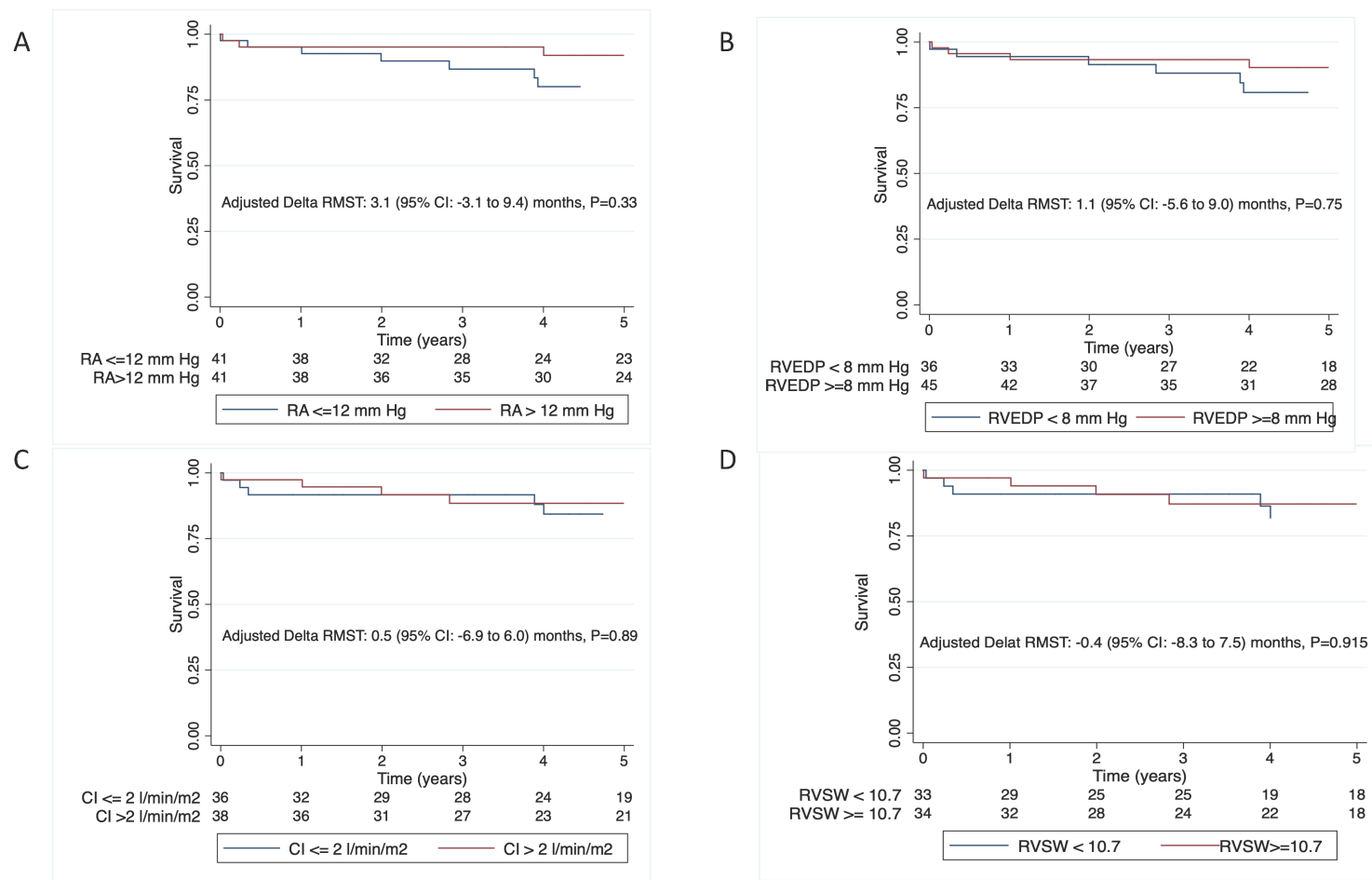
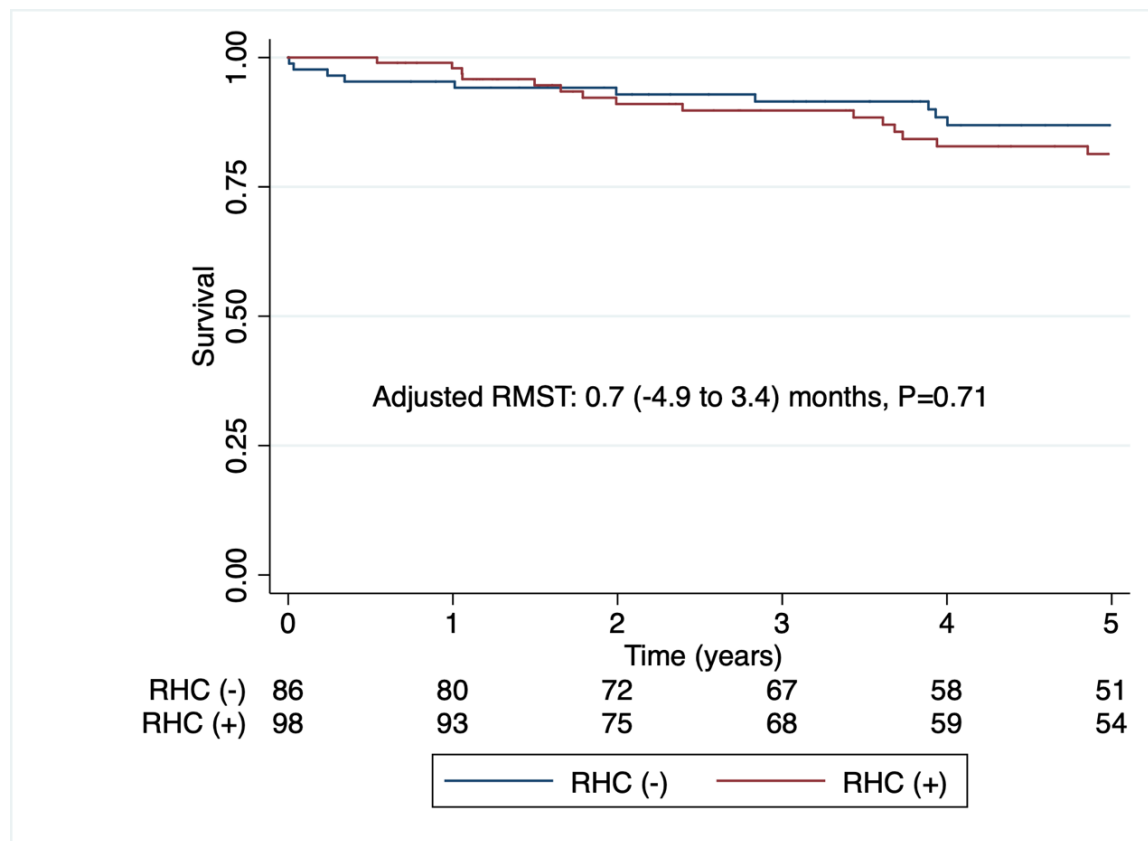


Supplemental Figure S1



Supplemental Figure S1. Survival in Patients Undergoing TVR or TVr Categorized by Median Values of Invasive Hemodynamic Measures of Right Ventricular Function. RA – right atrial pressure, RVEDP – right ventricular end diastolic pressure, CI – cardiac index, RVSW – right ventricular stroke work, TVR – tricuspid valve replacement, and TVr – tricuspid valve repair.

Supplemental Figure S2



Supplemental Figure S2. Survival in Patients Undergoing TVR or TVr Categorized by the Availability of Invasive Hemodynamic Data. RHC – right heart catheterization, TVR – tricuspid valve replacement, and TVr – tricuspid valve repair.

Supplemental Table S1: Etiology of Tricuspid Valve Disease

Etiology	N (%)
Primary Tricuspid Regurgitation	16 (19%)
• Myxomatous disease	3 (3.5%)
• Pacemaker	4 (4.7%)
• Endomyocardial biopsy	3 (3.6%)
• Infective endocarditis	2 (2.4%)
• Rheumatic heart disease	1 (1.2%)
• Radiation	1 (1.2%)
• Carcinoid disease	1 (1.2%)
• Restricted leaflet	1 (1.2%)
Secondary Tricuspid Regurgitation	66 (77%)
• Cardiomyopathy	9 (10.5%)
• Mitral valve disease	42(48.8%)
• Isolated TR	4 (4.7%)
• Aortic valve disease	7 (8.1%)

- Congenital heart disease 3 (3.5%)
- Constrictive pericarditis 1 (1.2%)

Tricuspid Stenosis 3 (3.5%)

Unknown 1 (1%)

Supplemental Table S2: Difference in Restricted Mean Survival Time after TVR/TVr based on Pulmonary Vascular Hemodynamics Categorized by Concomitant Left Sided Valve Surgery

Characteristics	Survival Time, months	Unadjusted Δ RMST, months (95% CI)	P-Value
Concomitant Left Sided Valve Surgery			
Mean PA pressure (≥ 30 mm Hg vs. < 30 mm Hg)	57 vs. 53	4.0 (- 5.6 to 13.5)	0.41
PVR (≥ 2.5 WU vs. < 2.5 WU)	52 vs. 60	-7.7 (-14.9 to 0.56)	0.03
PAC (≥ 2.3 ml/mm Hg vs. < 2.3 ml/mm Hg)	55 vs. 54	1.0 (-10.0 to 11.9)	0.86
Ea (≥ 0.8 mmHg/ml vs. < 0.8 mmHg/ml)	54 vs. 56	-1.7 (-12.2 to 8.9)	0.76
No Concomitant Left Sided Valve Surgery			
Mean PA pressure (≥ 30 mm Hg vs. < 30 mm Hg)	55 vs. 54	0.5 (-10.9 to 12.0)	0.93
PVR (≥ 2.5 WU vs. < 2.5 WU)	49 vs. 56	-7.7 (-19.9 to 4.5)	0.22
PAC (≥ 2.3 ml/mm Hg vs. < 2.3 ml/mm Hg)	55 vs. 51	3.5 (-9.9 to 16.8)	0.61
Ea (≥ 0.8 mmHg/ml vs. < 0.8 mmHg/ml)	48 vs. 56	8.2 (-23.2 to 6.9)	0.29