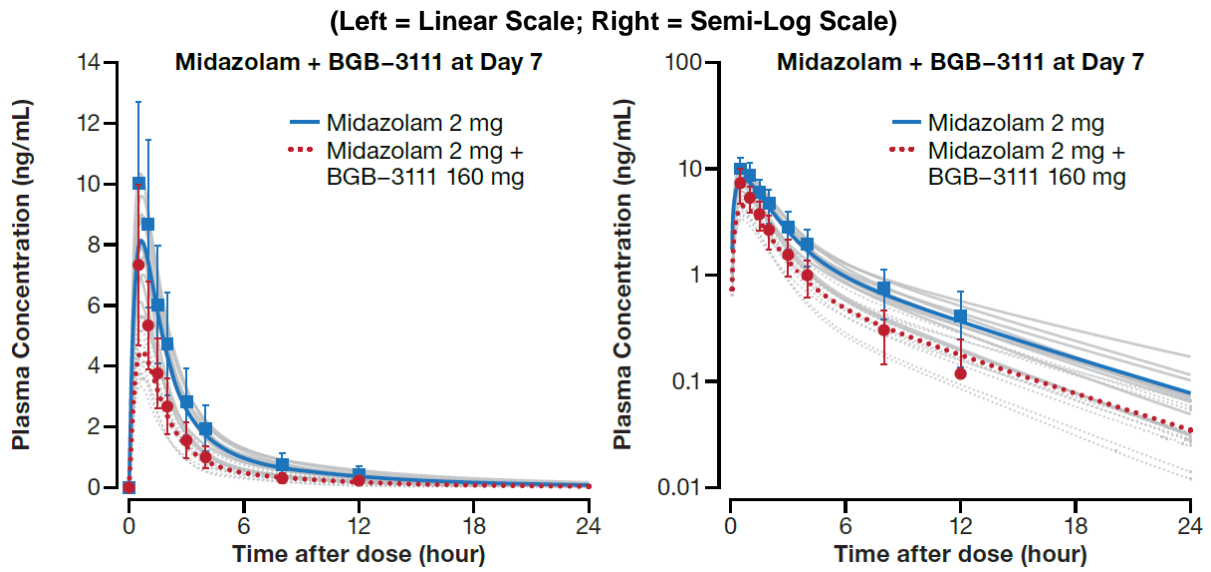


Figure S2. Simulation of plasma concentration-time profiles of midazolam 2 mg in healthy subjects following multiple doses of zanubrutinib



Observed data from clinical study BGB-3111-108) are displayed as solid dots. Simulated plasma concentration-time profiles of a single dose of midazolam are displayed in the absence of zanubrutinib (solid lines) and on the seventh day following 7 days of dosing with zanubrutinib (160 mg b.i.d.) (dashed lines). The solid and dashed grey lines represent the outcomes of simulated individual trials of absence and presence of zanubrutinib, respectively.

Abbreviation: b.i.d., twice daily.