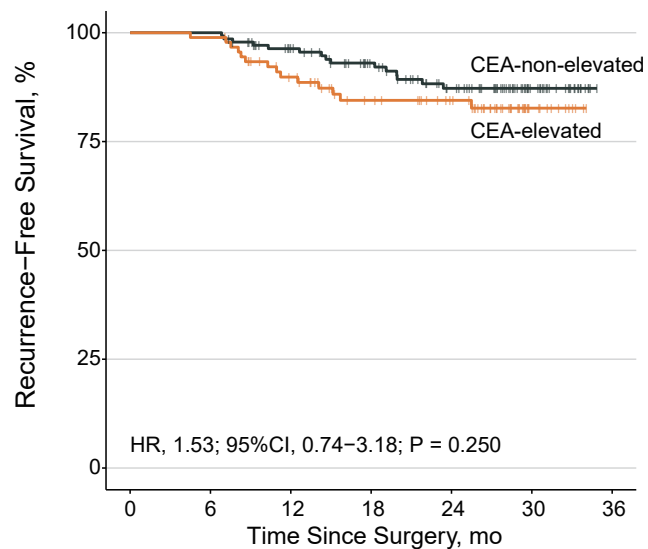
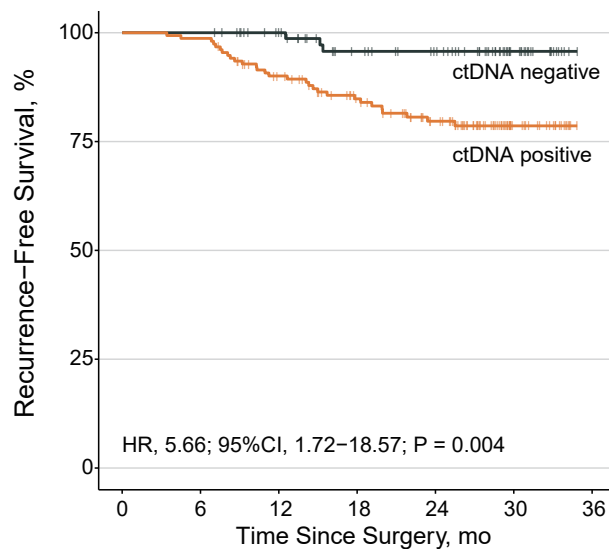


Figure S3. Kaplan-Meier estimates of recurrence-free survival (RFS) according to preoperative CEA and ctDNA status.



| No.at risk | | 0 | 6 | 12 | 18 | 24 | 30 | 36 |
|------------------|-----|-----|-----|-----|----|----|----|----|
| CEA-non-elevated | 140 | 140 | 121 | 101 | 81 | 30 | 0 | |
| CEA-elevated | 91 | 90 | 75 | 58 | 49 | 14 | 0 | |



| No.at risk | | 0 | 6 | 12 | 18 | 24 | 30 | 36 |
|----------------|-----|-----|-----|-----|----|----|----|----|
| ctDNA negative | 86 | 86 | 76 | 61 | 54 | 24 | 0 | |
| ctDNA positive | 154 | 152 | 128 | 104 | 82 | 21 | 0 | |