

SPACEFLIGHT AND HIND LIMB UNLOADING INDUCES AN ARTHRITIC PHENOTYPE IN KNEE ARTICULAR CARTILAGE AND MENISCI OF RODENTS

Andy T. Kwok¹, Nequesha S. Mohamed², Johannes F. Plate², Raghunatha R. Yammani^{3,2}, Samuel Rosas², Ted A. Bateman⁴, Eric Livingston⁴, Joseph E. Moore¹, Bethany A. Kerr^{5,2}, Jingyun Lee^{3,6}, Cristina M. Furdulj^{3,6}, Li Tan³, Mary L. Bouxsein⁷; Virginia L. Ferguson⁸, Louis S. Stodieck⁹, David C. Zawieja¹⁰, Michael D. Delp¹¹, Xiao W. Mao¹², and Jeffrey S. Willey^{1,2}

Departments of ¹Radiation Oncology, ²Orthopaedic Surgery, ³Internal Medicine, Section of Molecular Medicine, and ⁵Cancer Biology, Wake Forest School of Medicine, Winston-Salem, NC, USA

⁴Department of Biomedical Engineering, University of North Carolina, Chapel Hill; Chapel Hill, NC, USA

⁶Proteomics and Metabolomics Shared Resource, Comprehensive Cancer Center, Wake Forest School of Medicine, Winston-Salem, North Carolina.

⁷Department of Orthopedic Surgery, Beth Israel Deaconess Medical Center, Harvard Medical School; Boston, MA, USA

⁸Department of Mechanical Engineering, University of Colorado at Boulder; Boulder, CO, USA

⁹BioServe Space Technologies, Aerospace Engineering Sciences, University of Colorado at Boulder; Boulder, CO, USA

¹⁰Department of Medical Physiology, Texas A&M University Medical School; Bryan, TX, USA

¹¹Department of Nutrition, Food and Exercise Sciences, Florida State University; Tallahassee, FL, USA

¹²Division of Biomedical Engineering Sciences (BMES), Department of Basic Sciences, Loma Linda University, Loma Linda, CA, USA

Keywords: Rodent Research 9; STS-135; menisci; cartilage; arthritis; spaceflight; tail suspension; microgravity; sedentary; exercise

Address correspondence to:

Jeffrey S. Willey

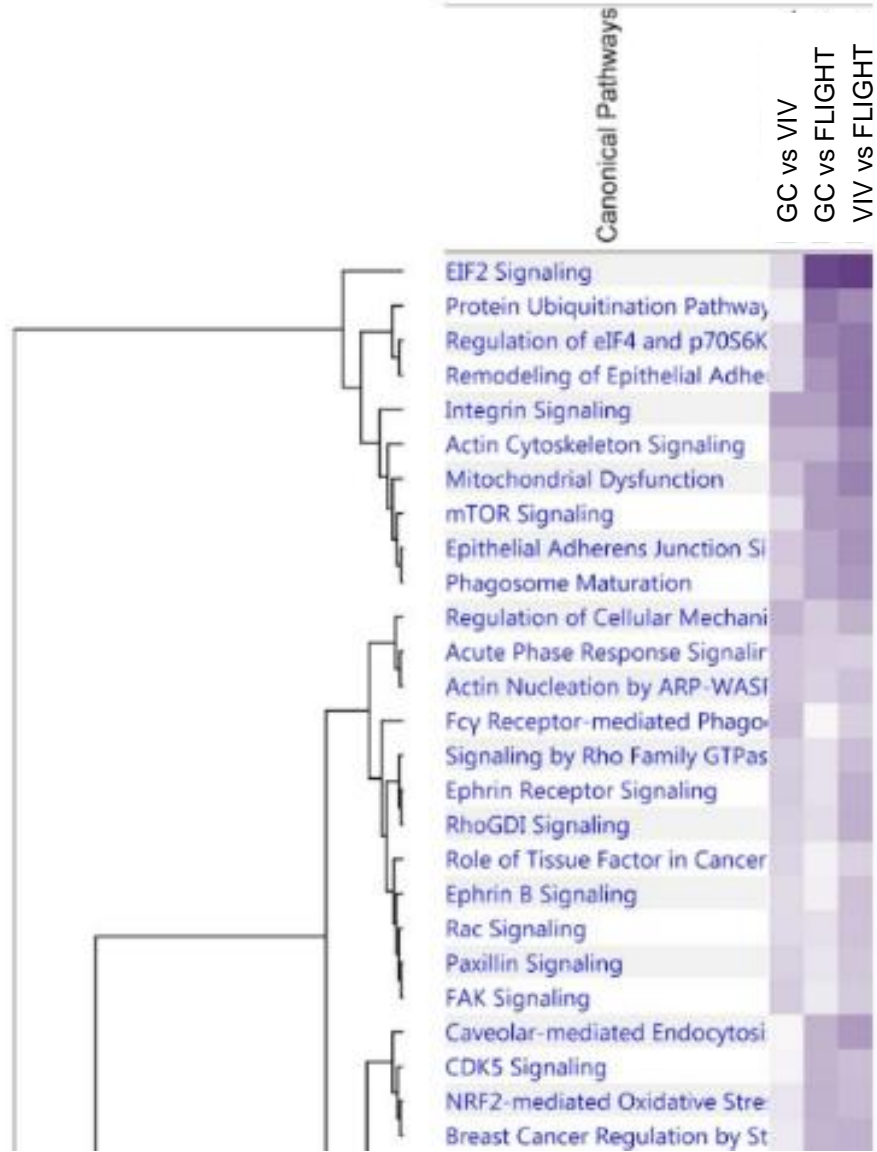
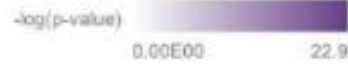
Department of Radiation Oncology
Wake Forest School of Medicine
Winston-Salem, NC 27157

jwilley@wakehealth.edu

336-713-7637

Supplemental Figure 1

Analysis Comparison 1



Supplemental Figure 2

