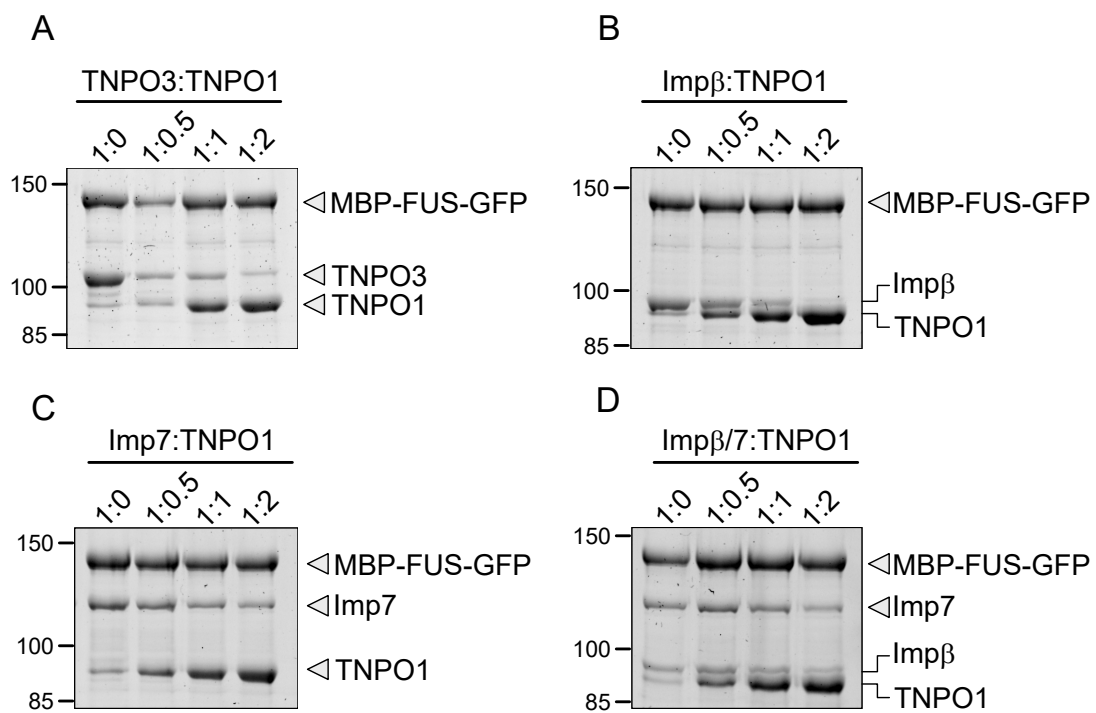


# The RNA-binding protein FUS is chaperoned and imported into the nucleus by a network of import receptors

Imke Baade, Saskia Hutten, Erin L. Sternburg, Marius Pörschke, Mario Hofweber, Dorothee Dormann and Ralph H. Kehlenbach

## Supporting information

Figure S1



**Figure S1. TNPO1 has a higher affinity for FUS compared to pre-bound TNPO3, importin  $\beta$ , importin 7 and importin  $\beta$ /7.**

MBP-FUS-EGFP was immobilized on amylose beads and incubated with either 100 pmol TNPO3, importin  $\beta$ , importin 7 or importin  $\beta$ /7 before adding TNPO1 at different molar ratios (as indicated). Bound proteins were analyzed by SDS-PAGE, followed by Sypro Ruby staining.