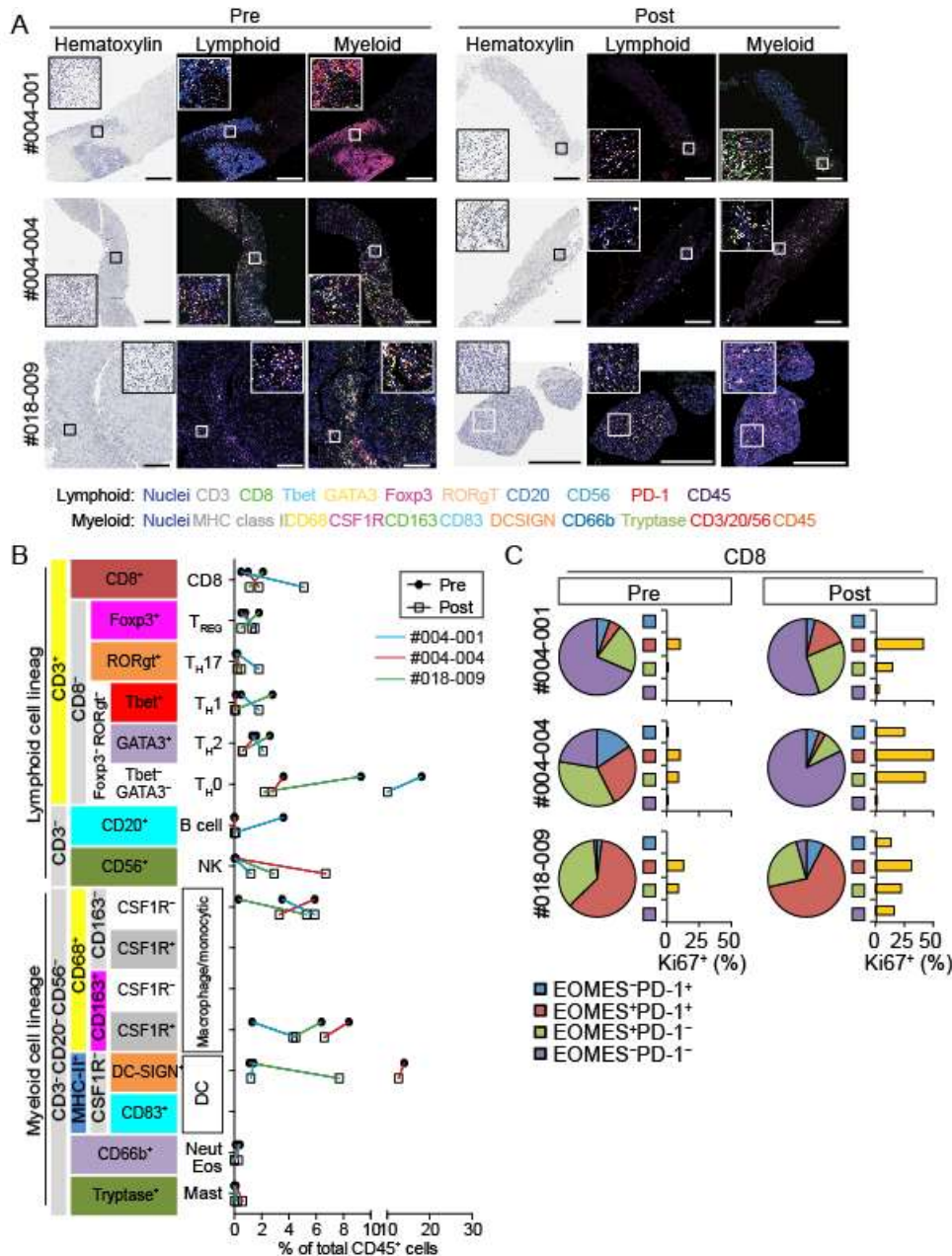


**Figure S2. Intratumoral leukocyte composition of mesothelioma representing pre- and post-therapy immunotherapy, evaluated by multiplex IHC.**



(A) Two serial FFPE sections per patient were evaluated for immunodetection of lymphoid and myeloid biomarkers as indicated in Table S1. Hematoxylin staining of biopsies is shown as bright-field images. Boxed areas reflect magnified areas shown (200  $\mu$ m  $\times$  200  $\mu$ m square). Magnification bars = 500  $\mu$ m. Color annotation of markers are shown at bottom. (B) The leukocyte populations in pre- and post-therapeutic status of #004-001, #004-004, and #018-009 are shown as a percentage of total CD45<sup>+</sup> cells. Immune cell lineages were quantified by image cytometry analysis (See Materials and Methods), according to lineage biomarkers in Table S1. (C) CD8<sup>+</sup> T cells were assessed for EOMES and PD-1 expression, followed by examination of Ki67 expression.