

Effect of COVID-19 on Liver Abnormalities: A Systematic review and Meta-analysis

Khalid Bzeizi, FRCP, MD ^{1*}, Maheeba Abdulla, MD ², Nafeesa Mohammed, MD ³, Jihad Alqamish, MD ⁴, Negar Jamshidi, PhD ⁵, Dieter Broering, MD, PhD, FEBS, FACS⁶

¹Department of Liver Transplantation, King Faisal Specialist Hospital & Research Center, P.O. Box 3354, Riyadh 11211, Saudi Arabia

^{2,3}Internal Medicine Department, Salmaniya Medical Complex, Manama, Bahrain

⁴Ibn AlNafees Hospital, Manama, Bahrain

⁵School of Science, RMIT University, Melbourne, VIC 3000, Australia

⁶AlFaisal University, Organ Transplant Center & Department of Surgery, King Faisal Specialist Hospital & Research Centre (Gen. Org) MBC 96, P.O. Box 3354, Riyadh 11211, Saudi Arabia

Running title: Liver and Covid-19

***Corresponding author:**

Dr Khalid Bzeizi

Department of Liver Transplantation, King Faisal Specialist Hospital & Research Center,
P.O. Box 3354, Riyadh 11211, Saudi Arabia

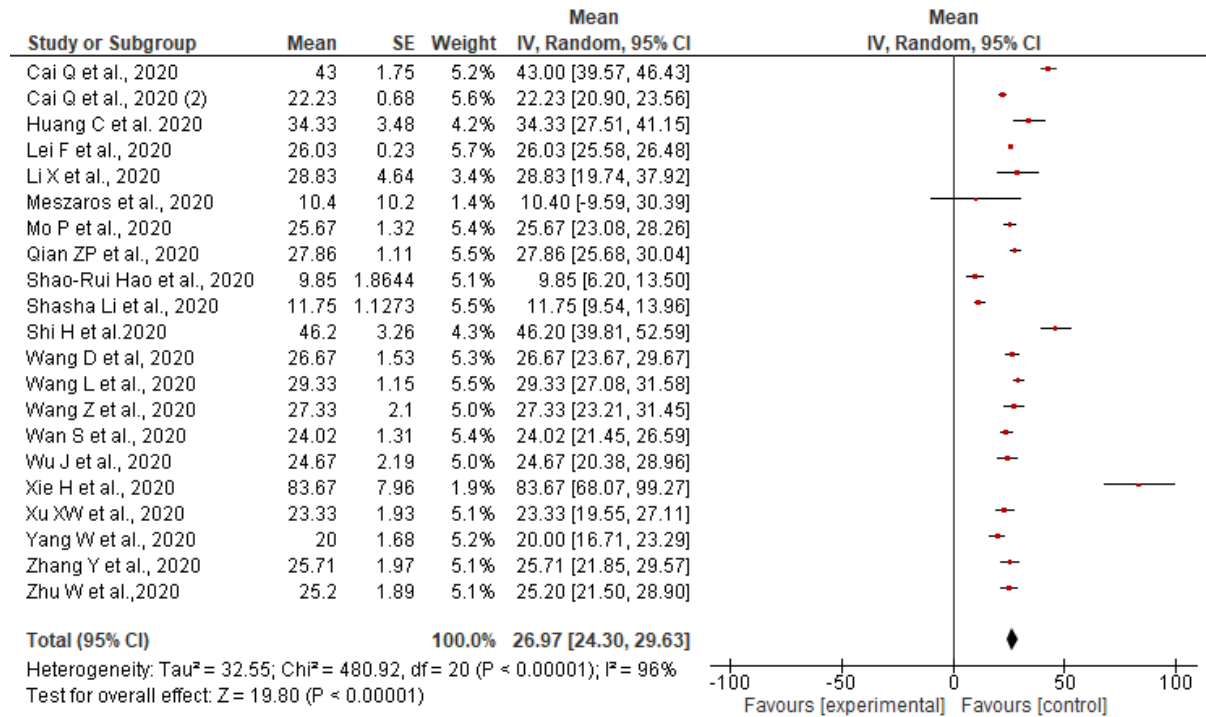
T: +966115576162

Email: kbzeizi@kfshrc.edu.sa

Sensitivity analysis

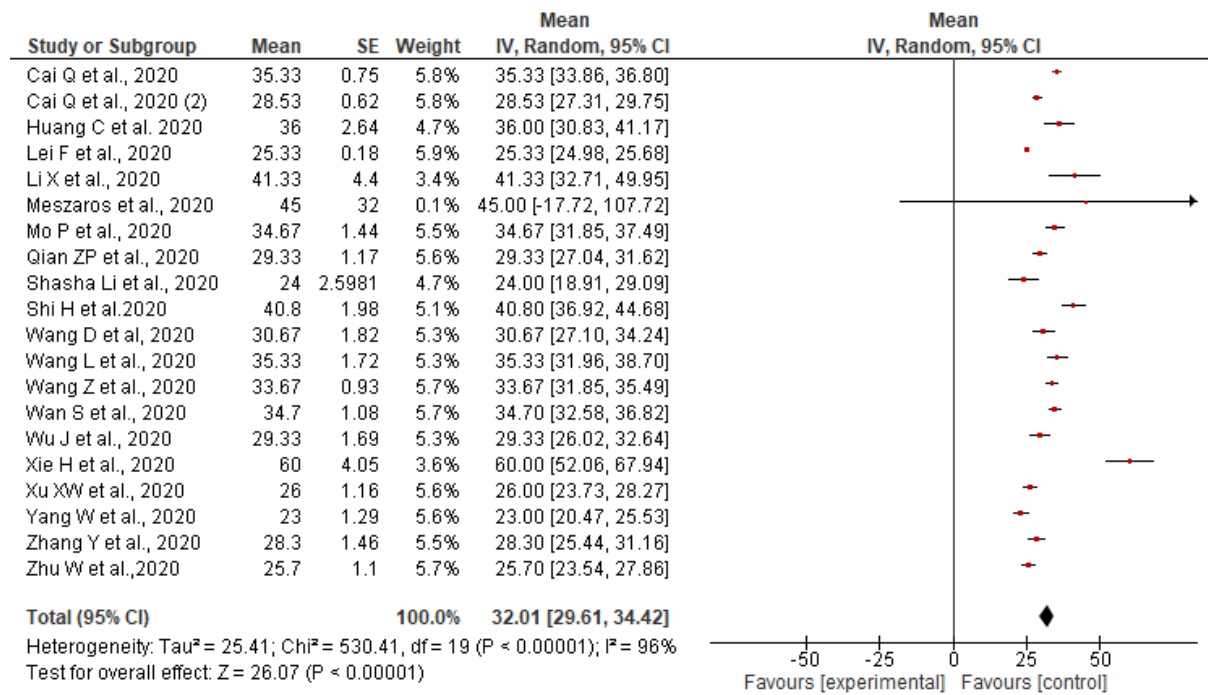
(Supplementary Figure S1).

Alanine aminotransferase (ALT)



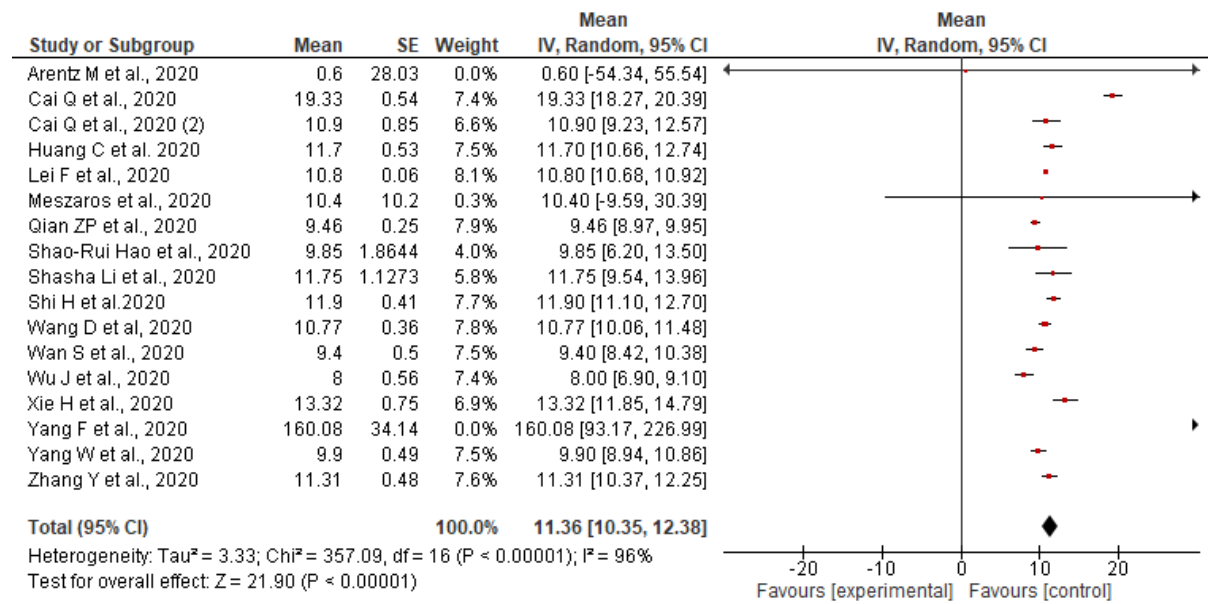
(Supplementary Figure S2).

Aspartate aminotransferase (AST)



(Supplementary Figure S3).

Total Bilirubin (TB)



(Supplementary Figure S4).

