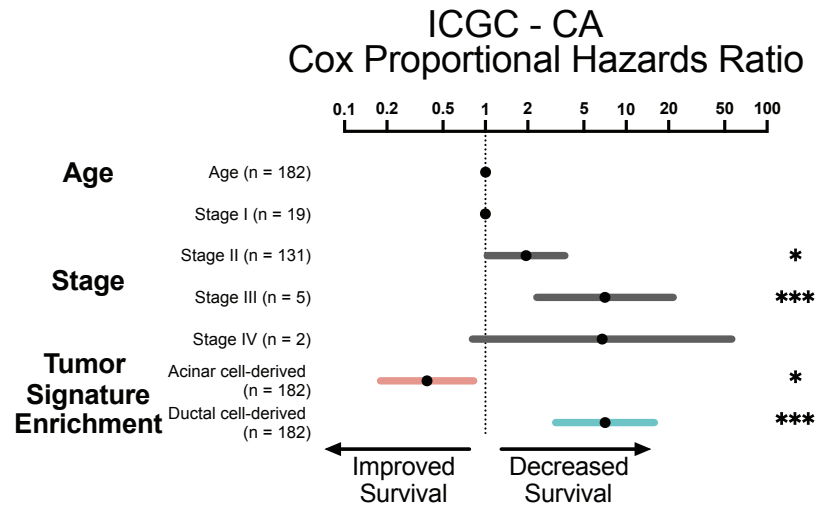
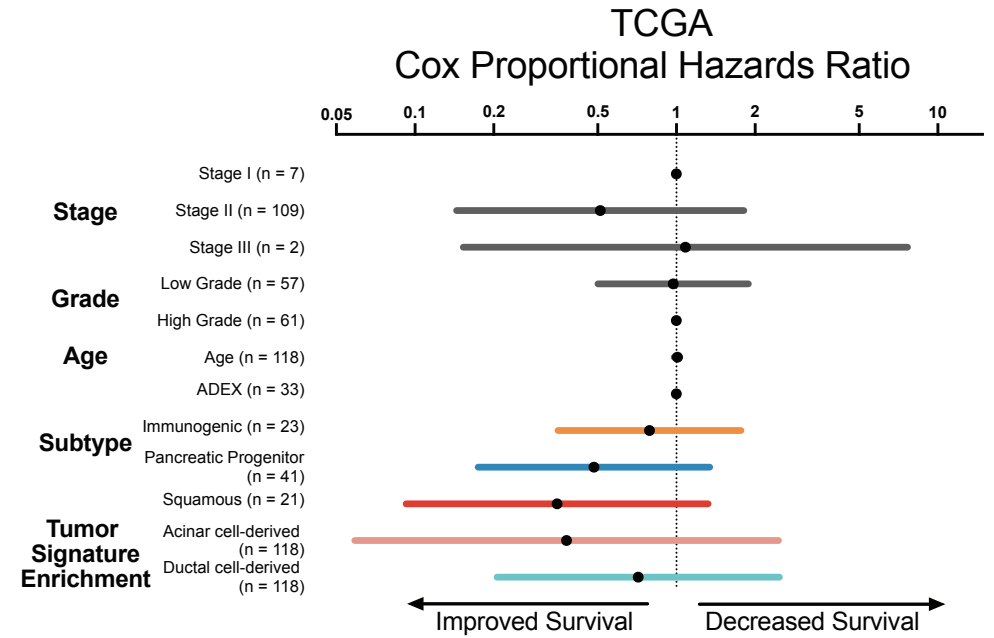


A.



B.



Supplementary Figure 6: Cox proportional hazard analysis of the Canadian ICGC and TCGA cohorts

(A) Cox proportional hazards ratios of the association between age, tumor stage, or the acinar or ductal cell-derived tumor signature enrichment (where high expression is reflective of enrichment) and overall survival of the Canadian ICGC patient cohort (ICGC – CA; n = 182). Asterisks indicate the factors that are significantly associated with overall survival. *p-value < 0.05, ***p-value < 0.001. **(B)** Cox proportional hazards ratios of the association between age, tumor stage or grade, 4 subtype classification (ADEX, immunogenic, pancreatic progenitor, or squamous) or the acinar or ductal cell-derived tumor signature enrichment (where high expression is reflective of enrichment) and overall survival of the TCGA patient cohort (n = 118).