

Figure S4 (associated with Figures 3 and 4)

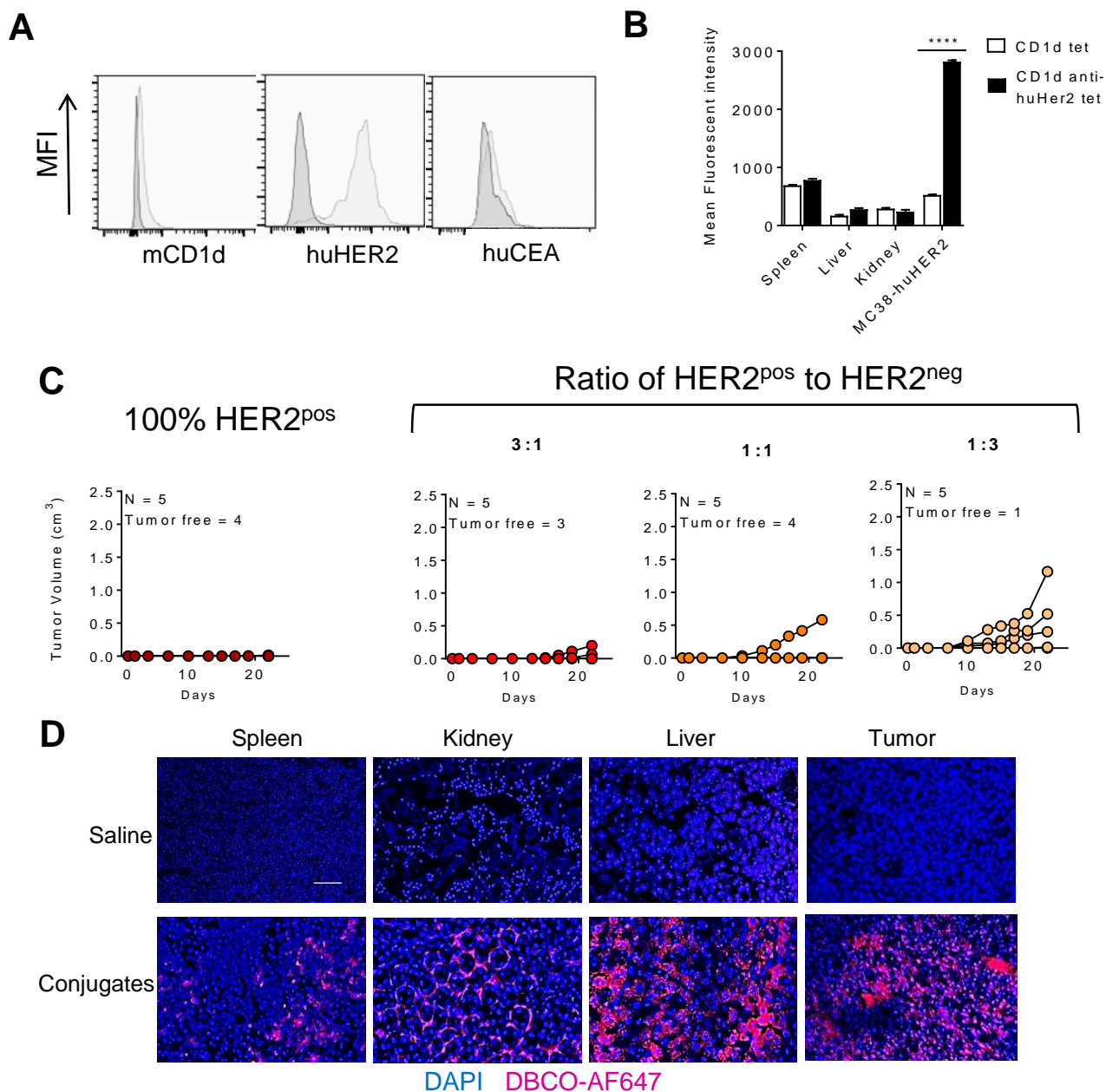


Figure S4: Specific binding of anti-HER2 conjugates to MC38-huHER2 cells and preferential retention in huHER2⁺ tumors. A. Expression of huHER2 and absence of endogenous CD1d or human CEA on MC38-huHER2 transfected cells was validated by flow cytometry. Light shaded histograms show specific staining for the indicated proteins, and dark histograms are isotype matched control antibody staining. **B.** APC-labeled tetramers of unloaded mCD1d or anti-HER2 mCD1d-ScFv were used to stain single cell suspensions from spleen, liver, kidney and MC38-HER2 cells to assess binding by FACS analysis. ****P < 0.0001, two way ANOVA with Sidak test for multiple comparisons. **C.** *In vivo* target specific cytotoxicity of conjugates was determined by mixing MC38 cells with MC38-huHER2 cells in various ratios before grafting on the thigh in mice. **D.** Direct visualization by click chemistry labeling of azido-modified C11:BP in tissue sections from MC38-huHER2 tumor bearing animals injected once with saline or anti-huHER2 conjugates. Scale bar 100 nm.