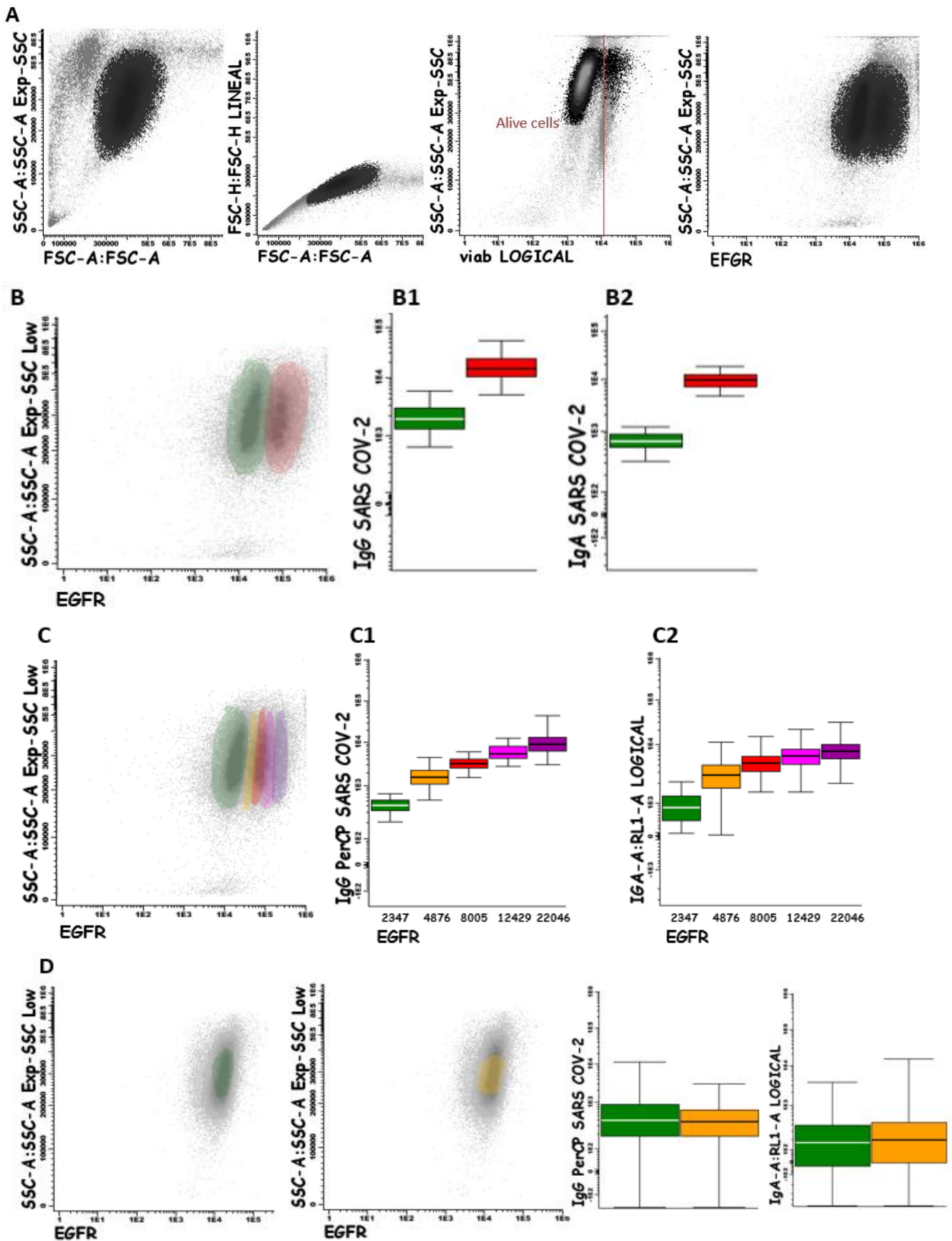
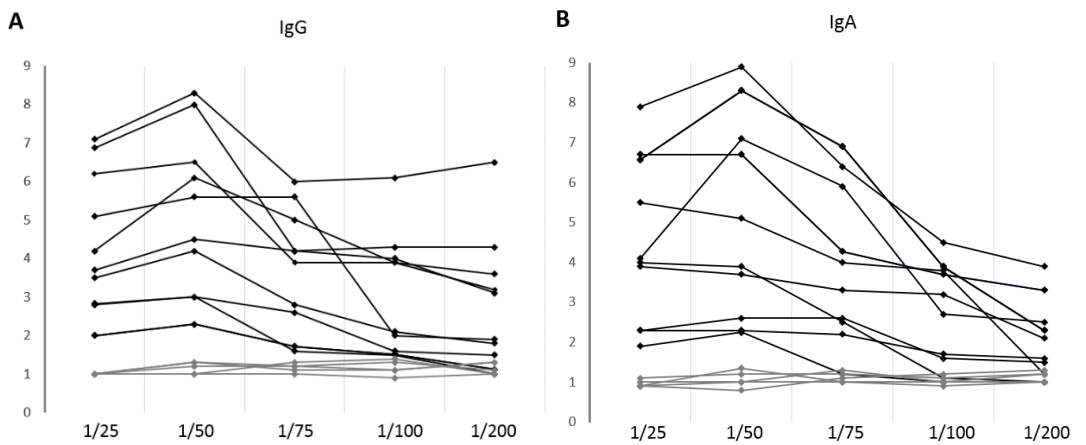


**Flow cytometry detection of sustained humoral immune response (IgG+IgA) against native spike glycoprotein in asymptomatic/ mild SARS-CoV-2 infection.**

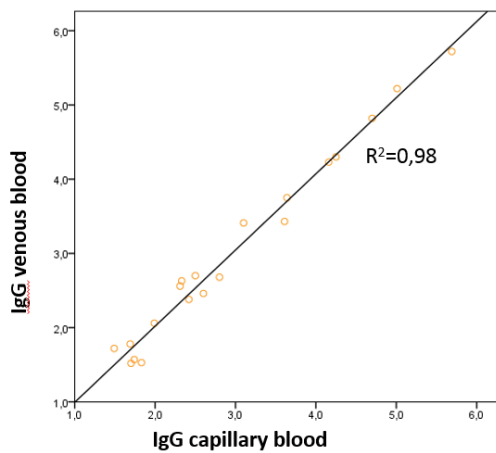
Paula Piñero Romero<sup>1,\*</sup>, Francisco Marco De La Calle<sup>2</sup>, Lydia Horndler<sup>3</sup>, Balbino Alarcón<sup>3</sup>, Marisol Uribe Barrientos<sup>4</sup>, Héctor Sarmiento<sup>2</sup>, Fabián Tarín<sup>2</sup>.



**Supplementary figure 1. A)** Sequential gating in the analysis of a sample. The region of analysis is represented in black and the rest of events are shown in grey. **B)** MFI of S-Jurkat cells (red)/O-Jurkat cells (green) for IgG (B1) and IgA (B2). **C)** Correlation between 5 levels (1 negative and 4 positive) of EGFR and IgG/IgA expression (C1 and C2 respectively). **D)** MFI of unstained S-Jurkat cells (yellow) and O-Jurkat cells (green). As the image shows, there are no differences between S-Jurkat and O-Jurkat in the unstained control.



**Supplementary figure 2.** IgG (A) and IgA (B) ratios obtained from the titration assay of 10 positive serum samples (black) and 5 negative controls (grey).



**Supplementary figure 3.** IgG results in a set of samples collected by venipuncture vs capillary puncture.