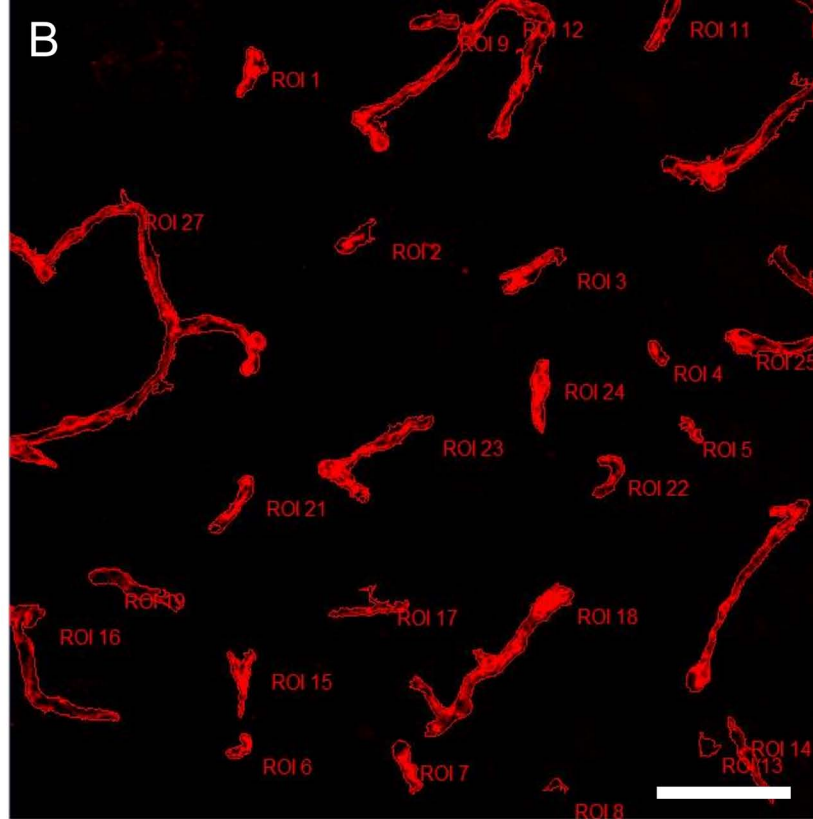
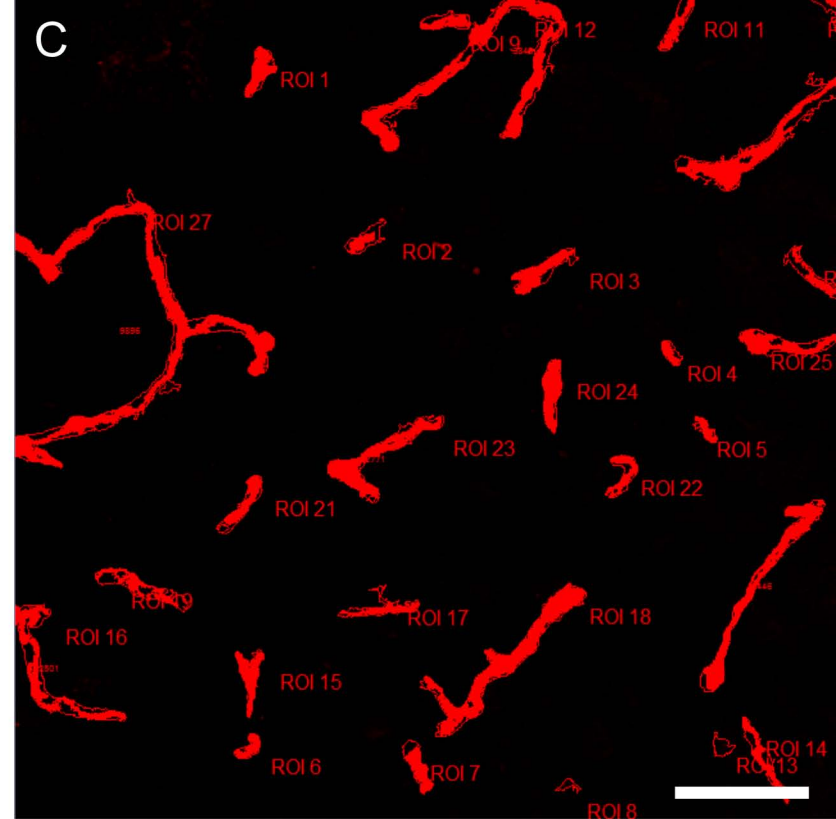


Laminin Immunoreactive Vessels thresh-holded and defined as Regions of Interest (ROIs).



Vessel ROIs superimposed on to correlative image for CD13 immunoreactive pericytes.



CD13 positive pixels quantified as a percentage of total vessel ROI area per image:

$$\text{CD13 Coverage} = \frac{\text{Sum (Area of CD13 Pixels in ROIs)}}{\text{Sum (Area of ROI 1 + ROI 2 + ...)}}$$