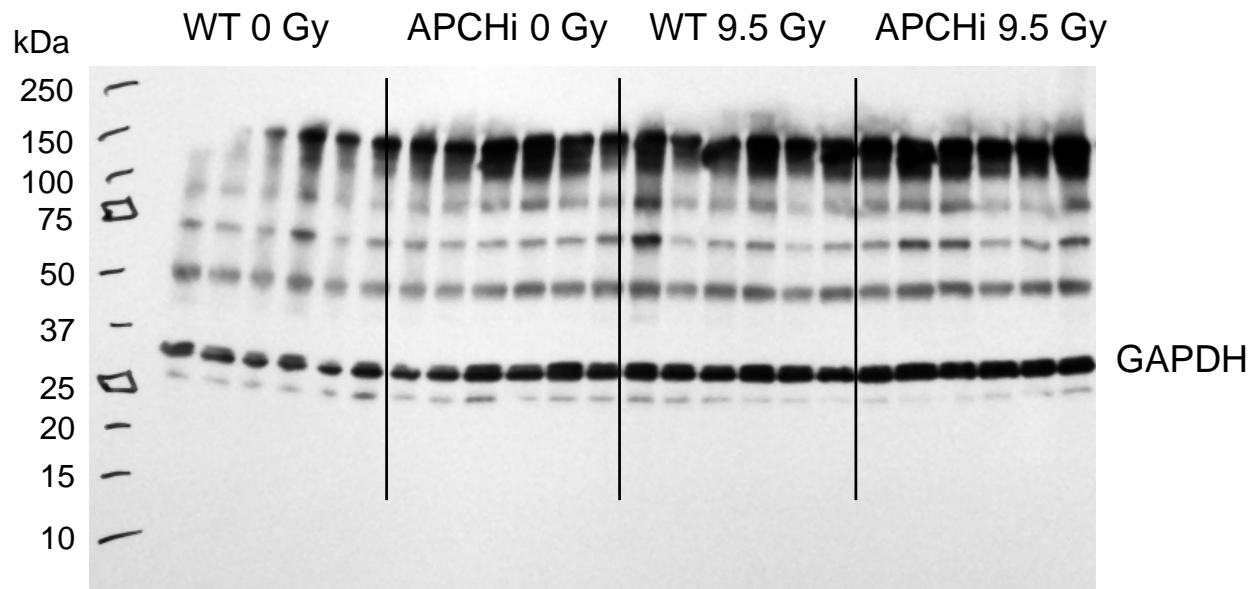
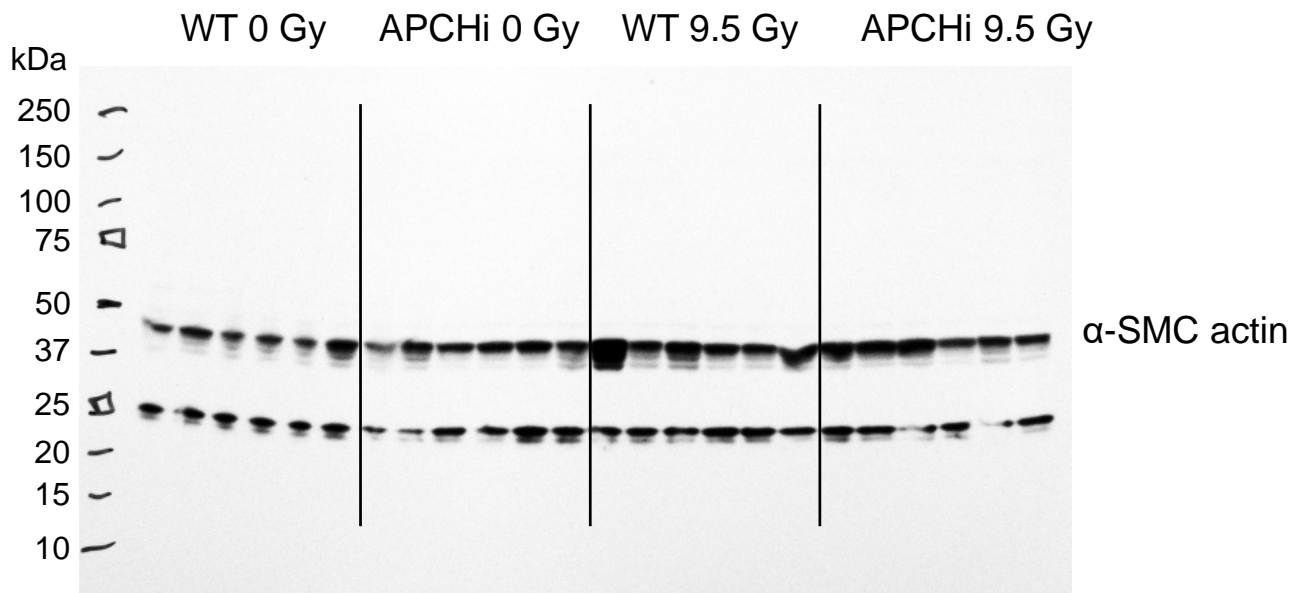
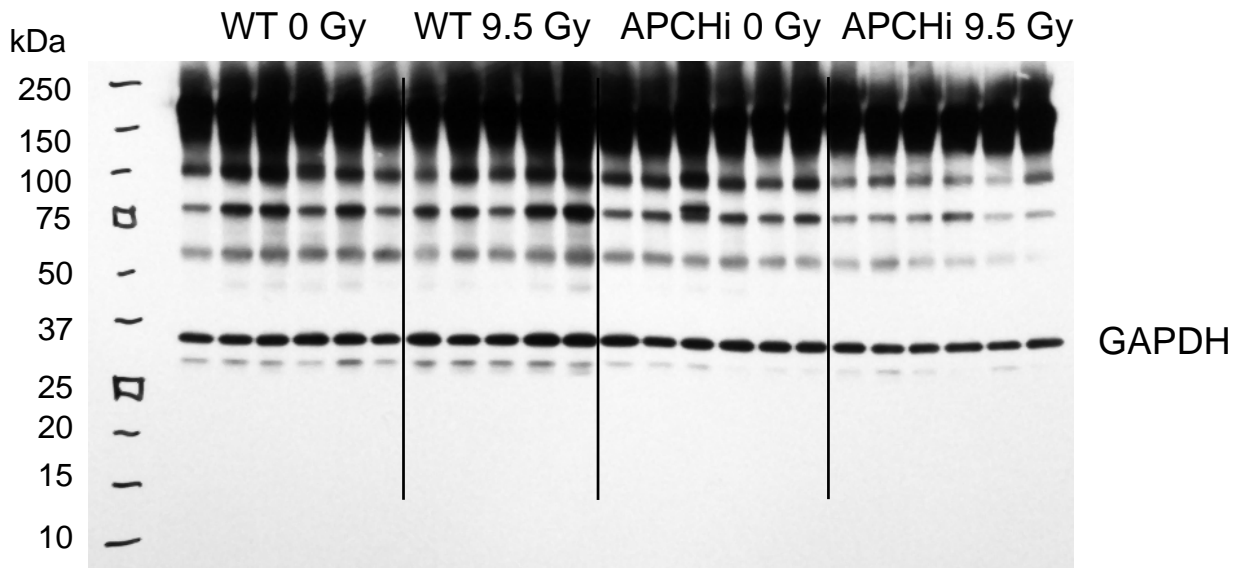
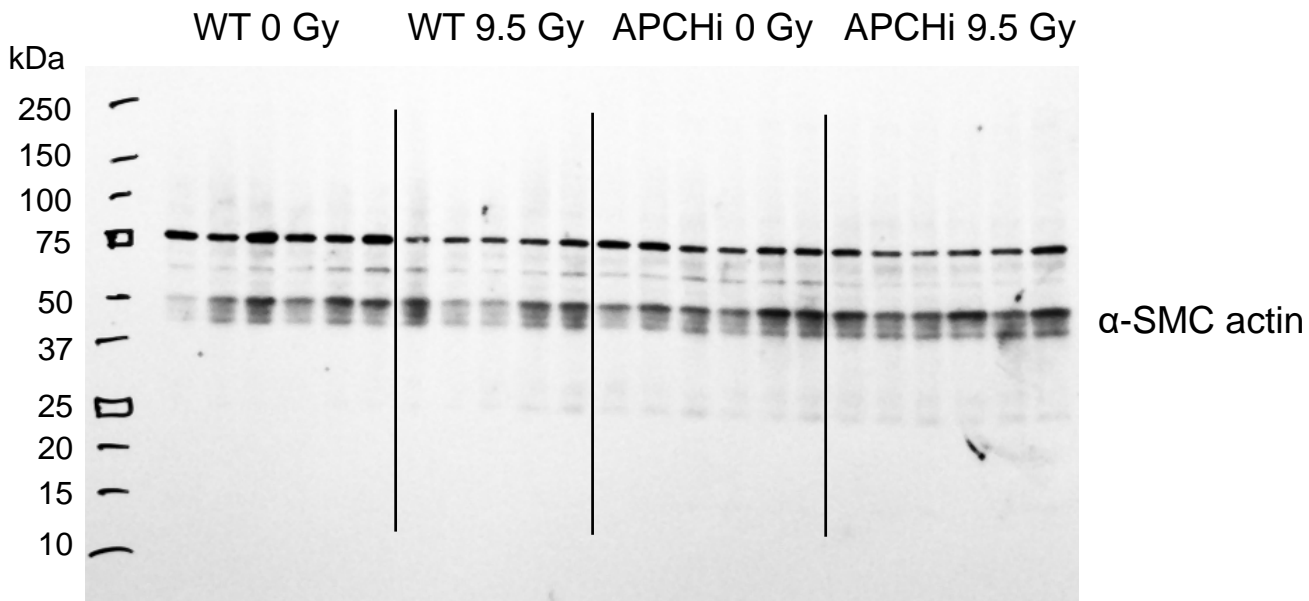


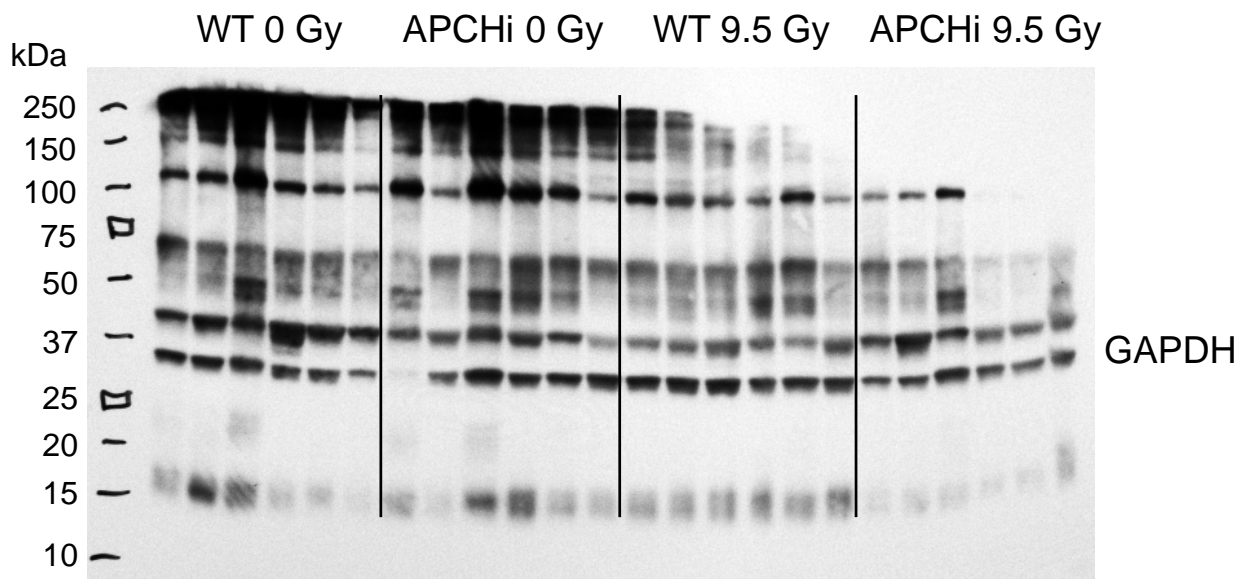
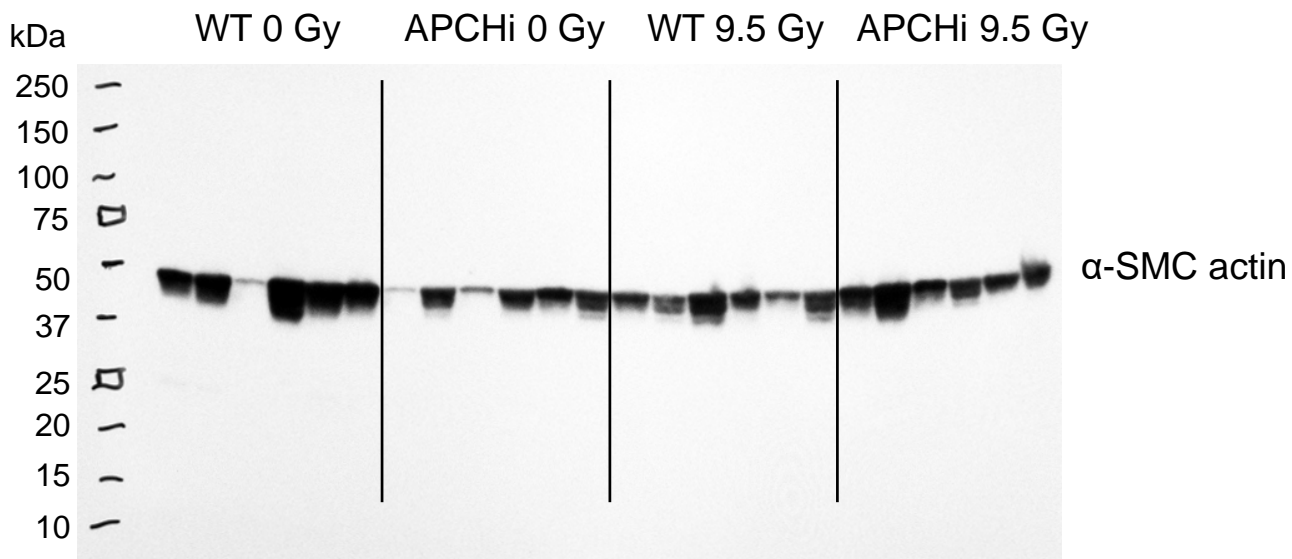
# Male heart $\alpha$ -smooth muscle cell (SMC) actin



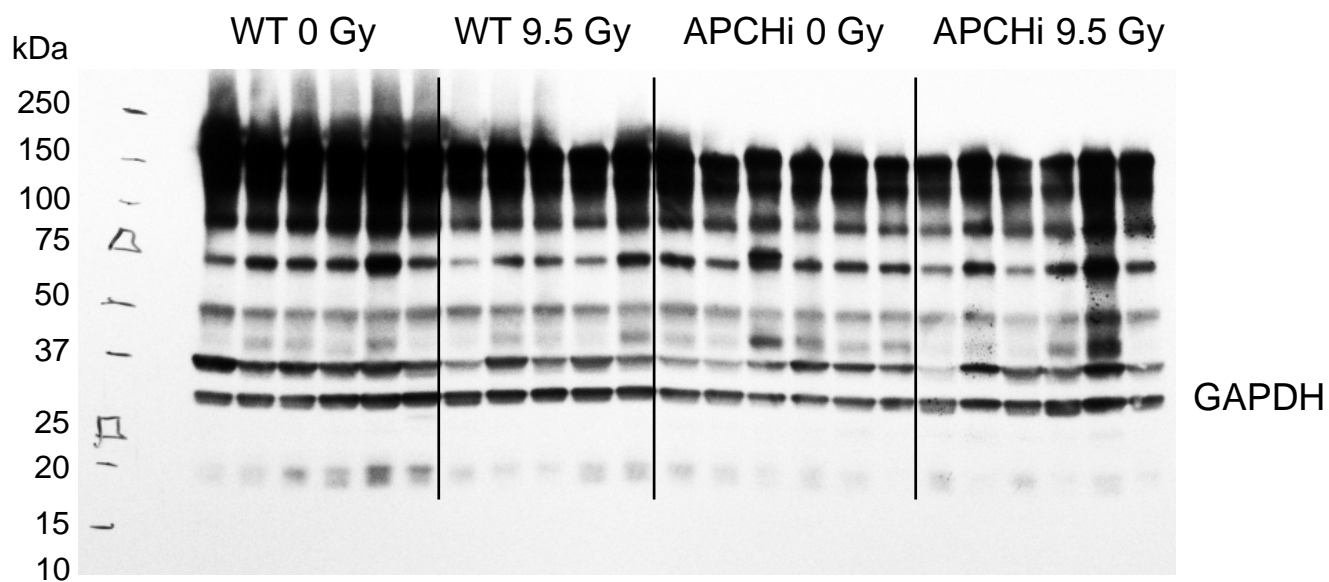
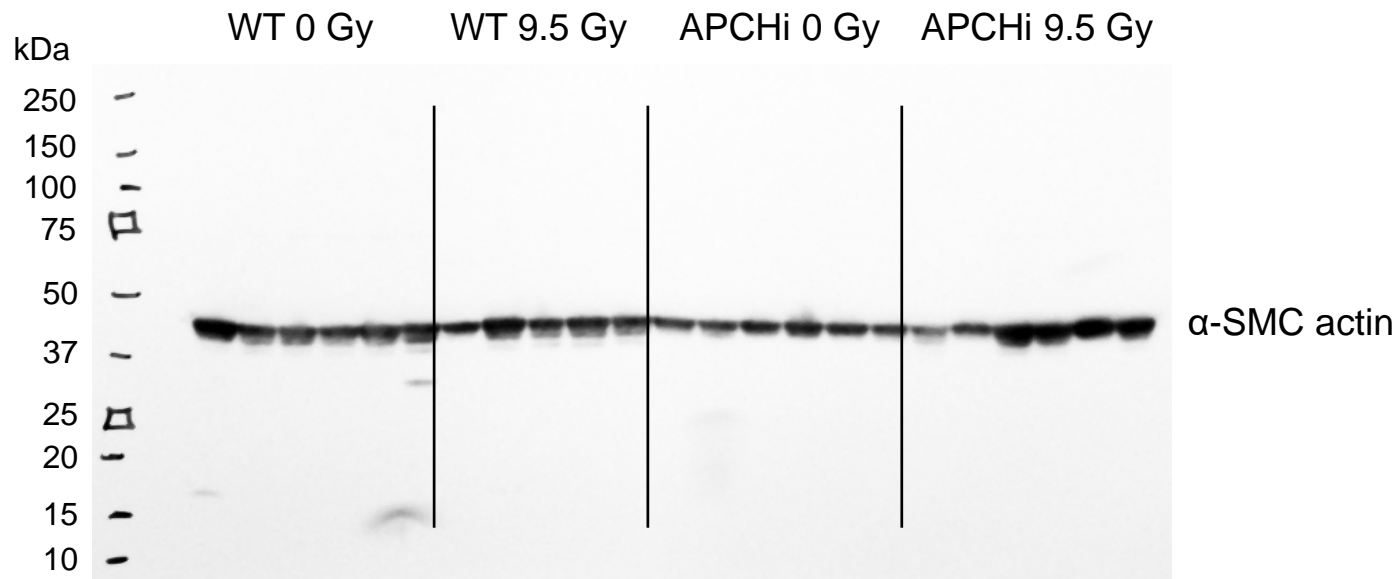
# Female heart $\alpha$ -smooth muscle cell (SMC) actin



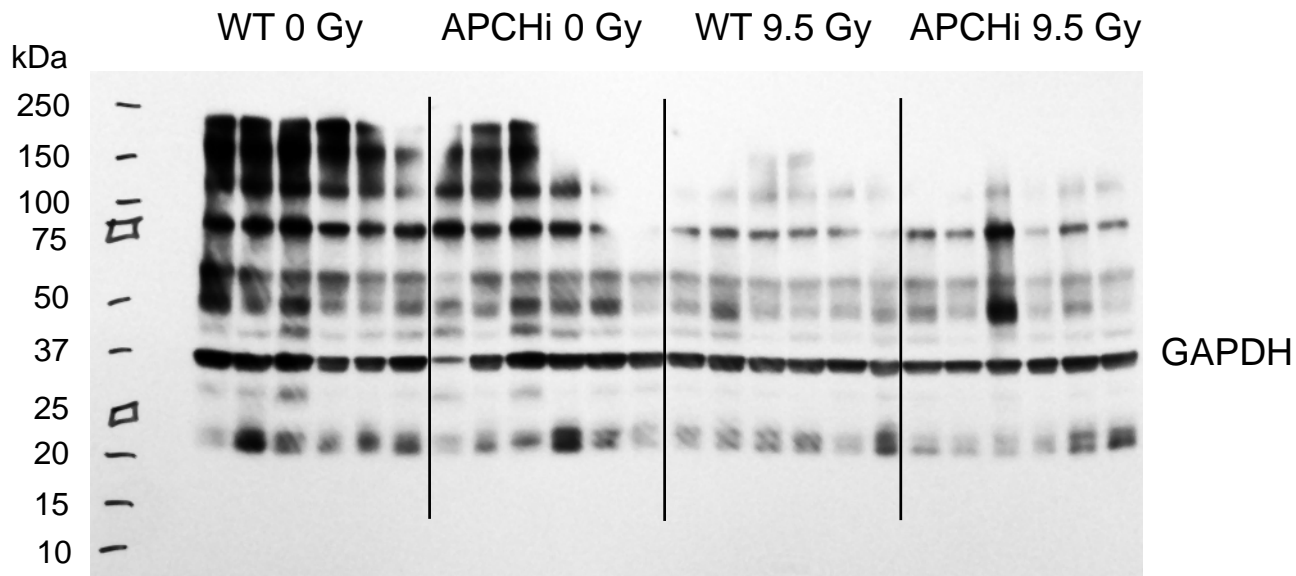
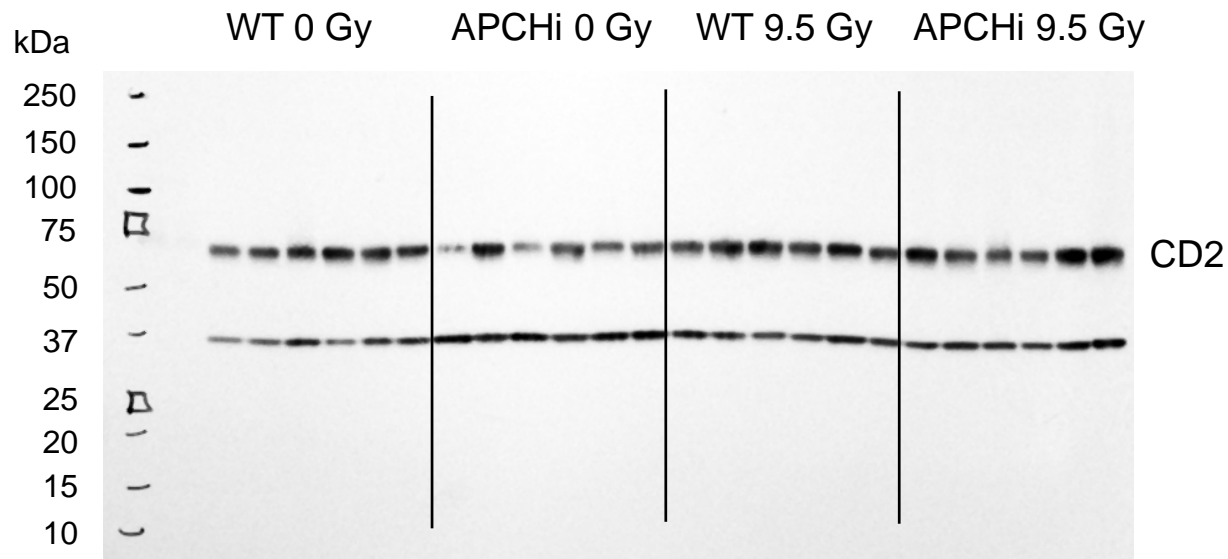
# Male intestine $\alpha$ -smooth muscle cell (SMC) actin



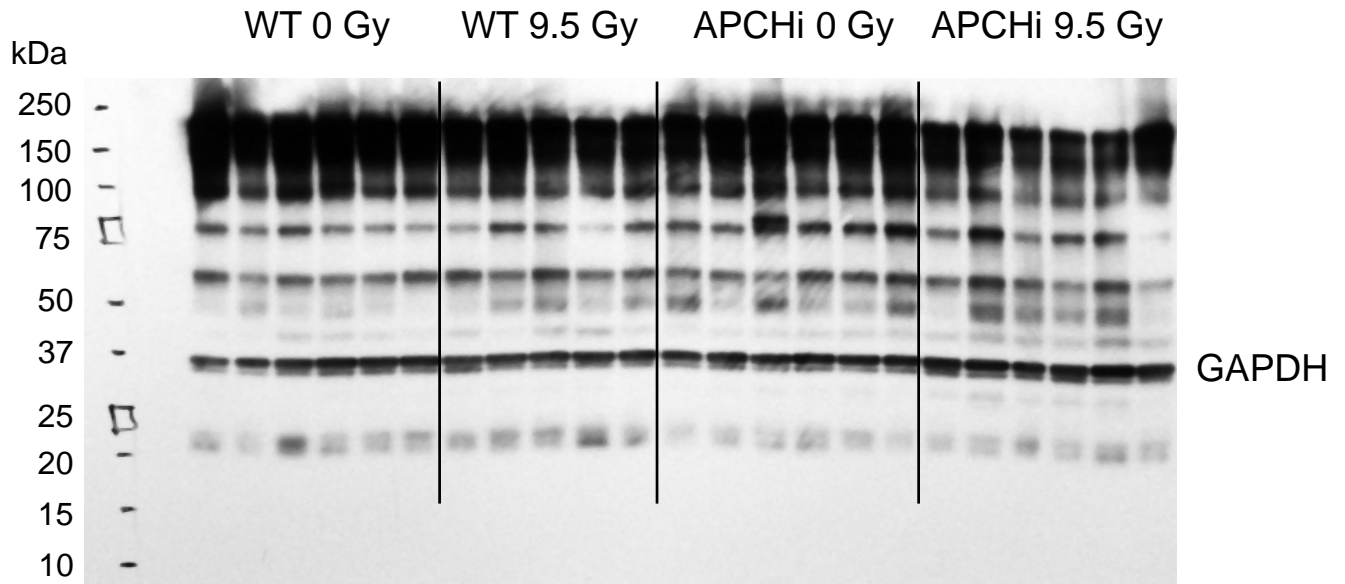
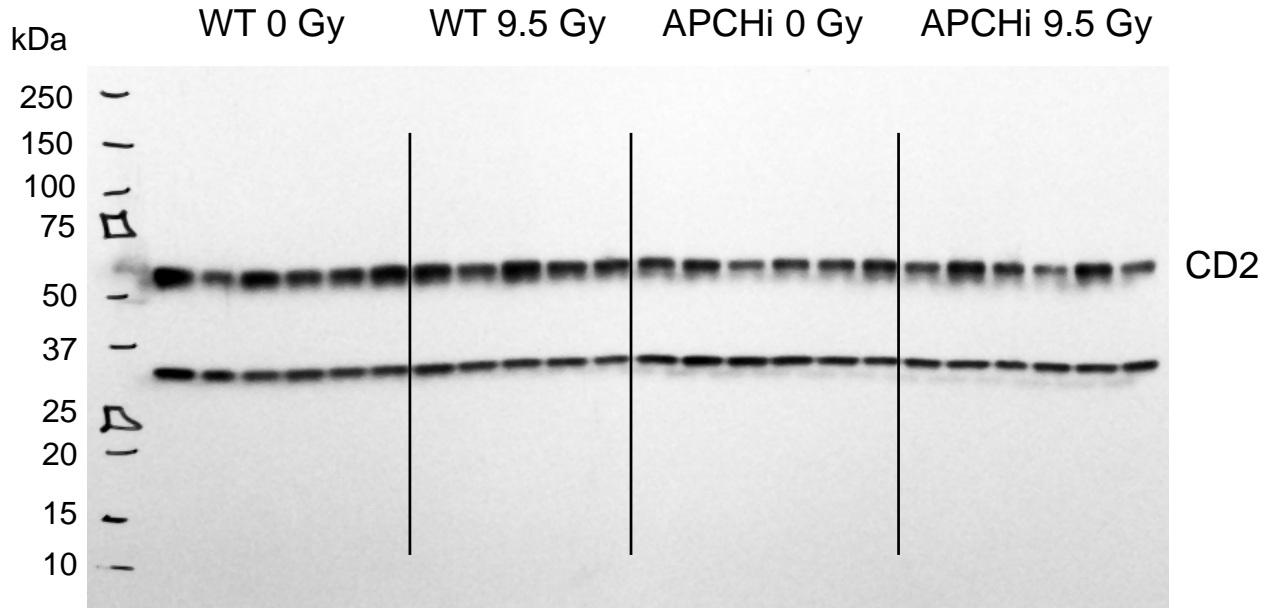
# Female intestine $\alpha$ -smooth muscle cell (SMC) actin



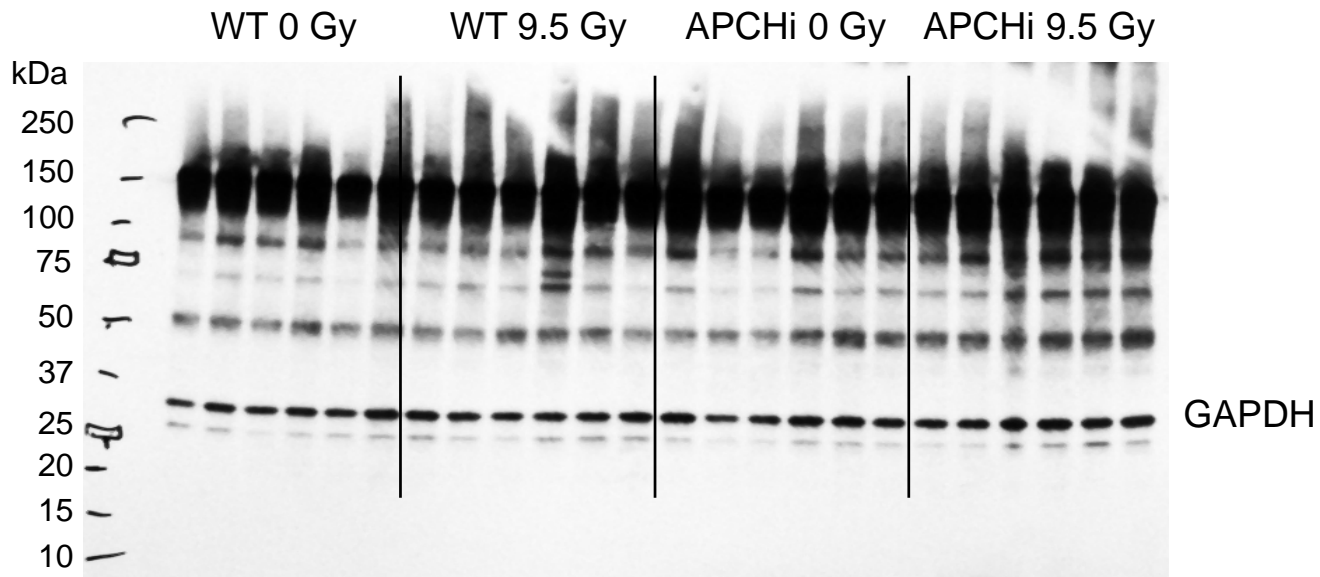
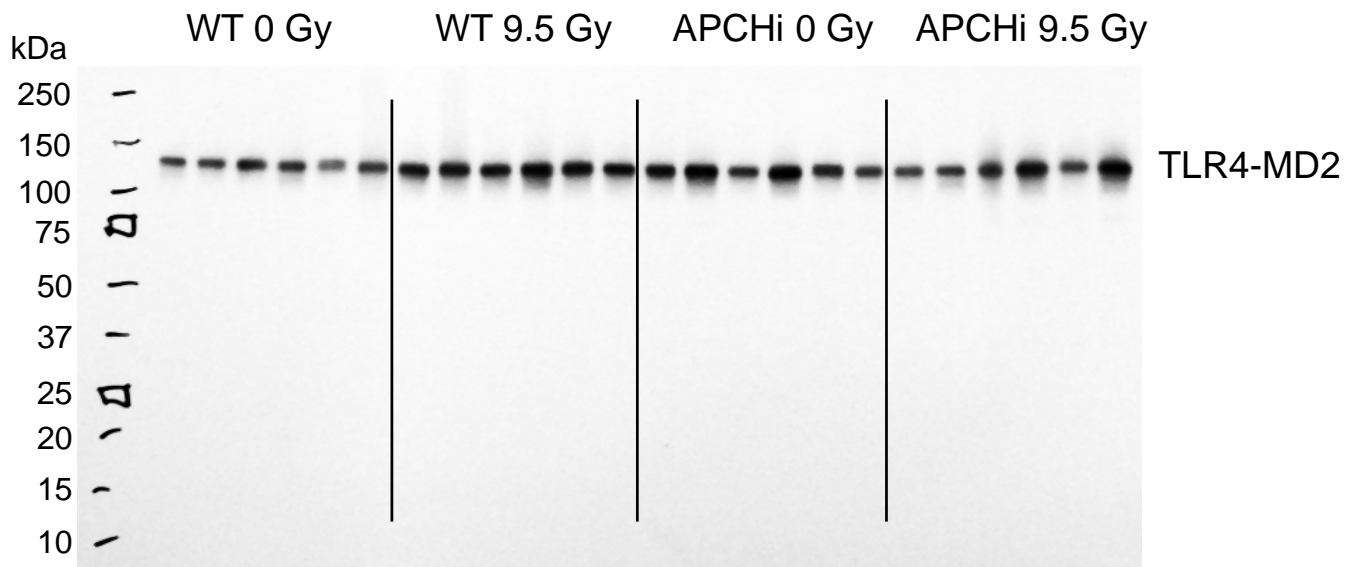
# Male intestine CD2



# Female intestine CD2



# Male heart toll-like receptor 4 (TLR4)-MD2 complex



# Female heart toll-like receptor 4 (TLR4)-MD2 complex

