

Supporting information

Porphyrin-lipid stabilized paclitaxel nanoemulsion for combined photodynamic therapy and chemotherapy

*Enling Chang^{1,2}, Jiachuan Bu¹, Lili Ding¹, Jenny W. H. Lou^{1,3}, Michael S. Valic^{1,2},
Miffy. H. Y. Cheng¹, Véronique Rosilio⁴, Juan Chen^{1*}, Gang Zheng^{1,2,3*}*

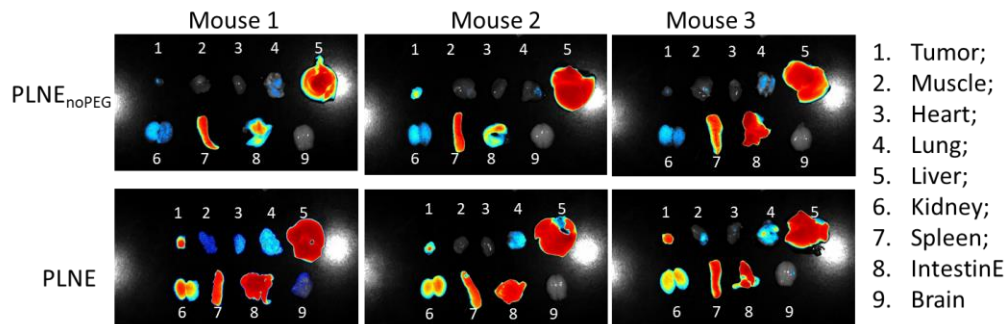


Figure S1. Ex vivo tissue fluorescence imaging at 24 h post injection of PLNE_{noPEG} versus PLNE.

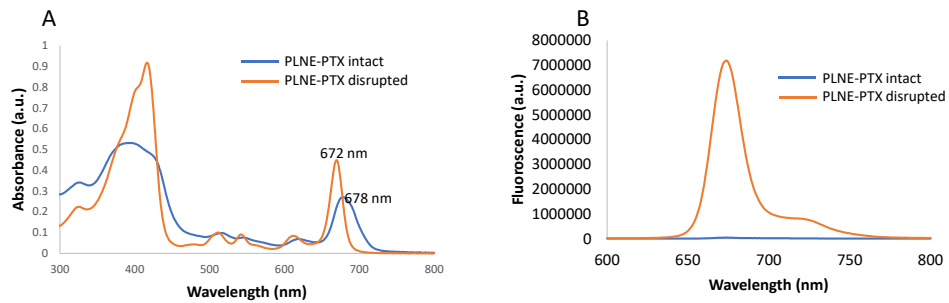


Figure S2. (A) UV-vis spectrum and (B) fluorescence spectrum of intact PLNE-PTX (ddH₂O) or disrupted PLNE-PTX (ddH₂O containing 1% Triton X-100).

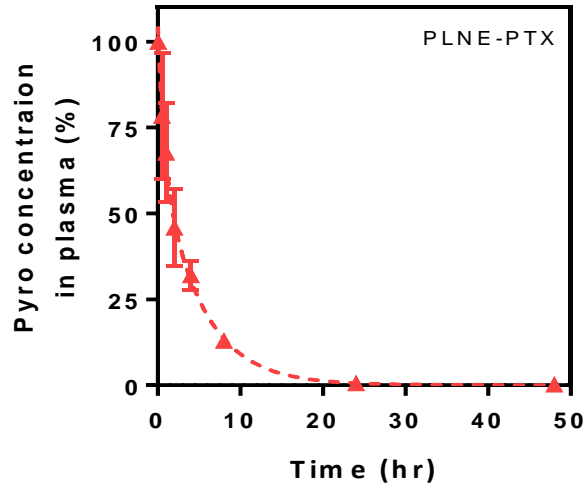


Figure S3, Blood clearance curve of PLNE-PTX exhibited short half-life of $t_{1/2\alpha} = 0.52 \pm 0.39$ h and long half-life of $t_{1/2\beta} = 3.10 \pm 0.34$ h (n=5) by two-phase exponential decay analysis

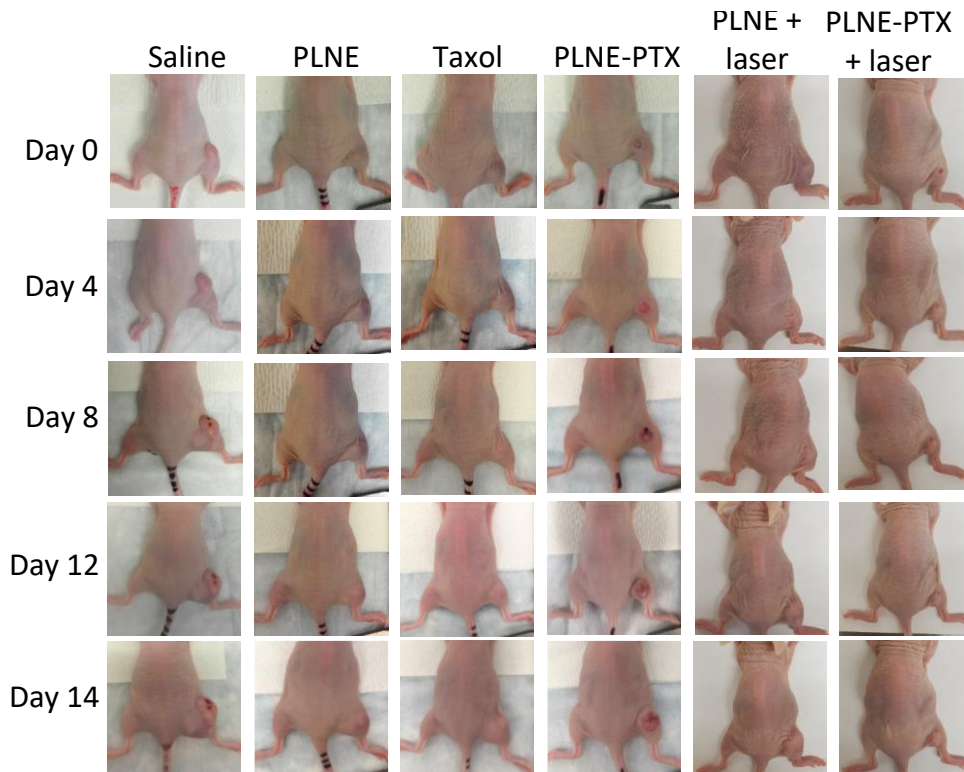


Figure S4. Representative tumor photographs in tracking tumor growth with time for each group after treatment.