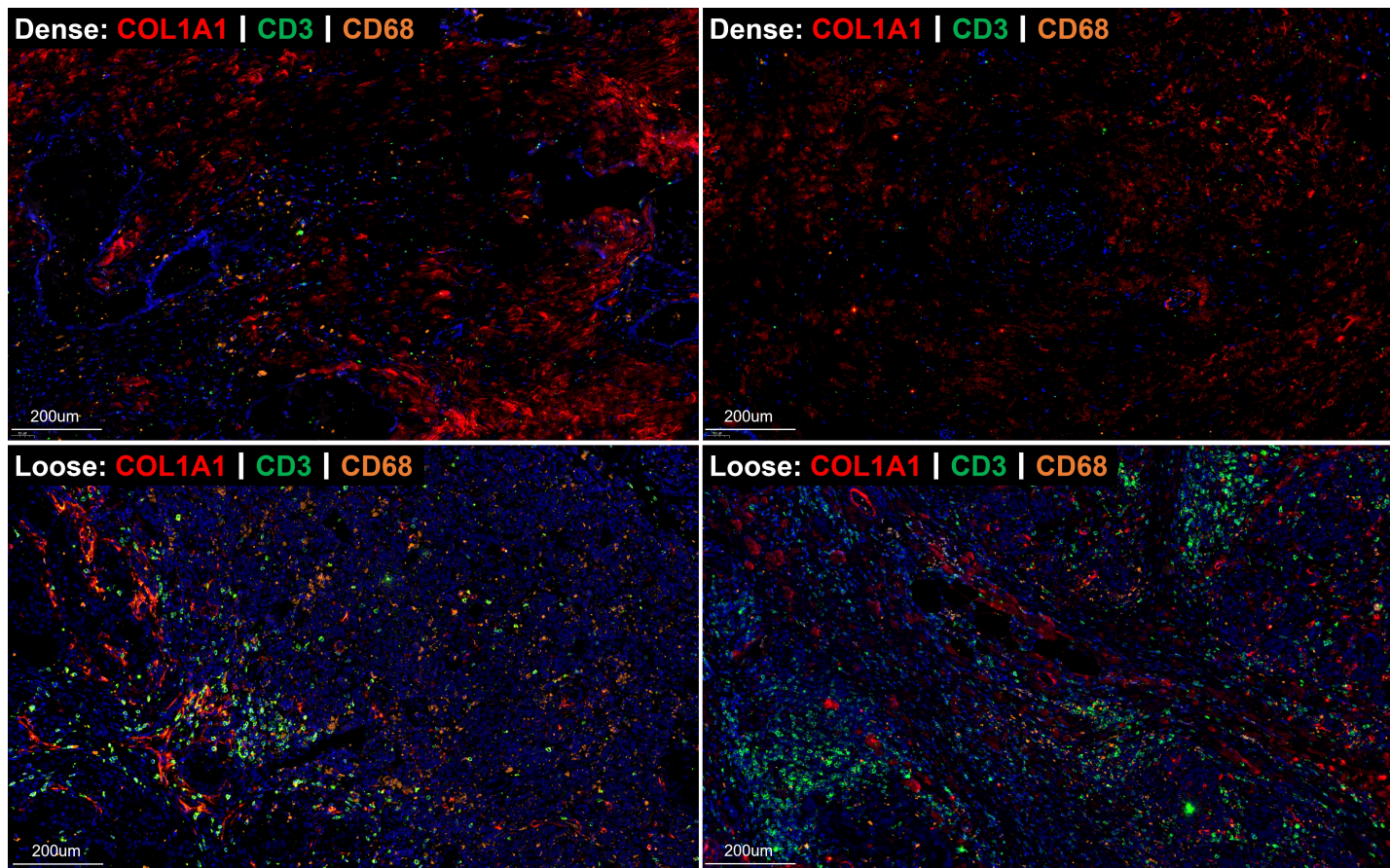


## Supplementary Figure S4.



### Supplementary Figure S4.

Multiplex immunofluorescence staining was conducted in nine PDAC samples undergoing scRNA-seq to confirm the changes in T cell and macrophage in dense- and loose-type PDACs. Representative images (two dense-type PDACs and two loose type PDACs from 9 PDAC samples, including one dense case and one loose case already shown in Fig 1e) were shown. The result shown that loose stroma was associated with the increase of infiltrating T cells and macrophages. COL1A1 for CAF (red), CD3 for T cell (green), CD68 for macrophage (orange).