

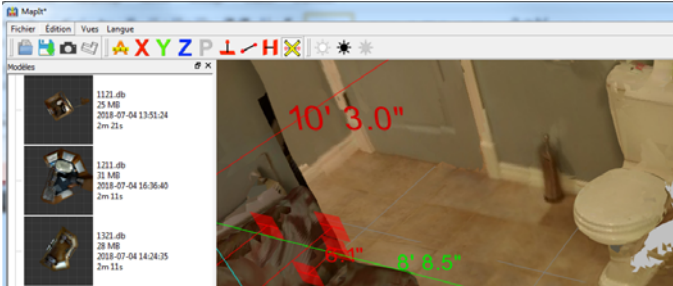

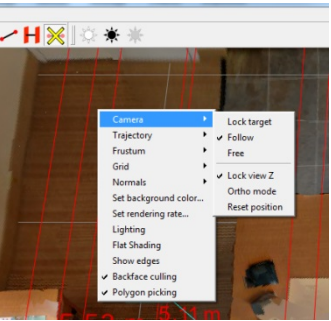
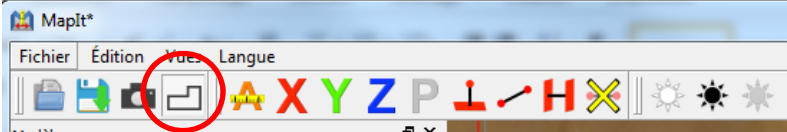
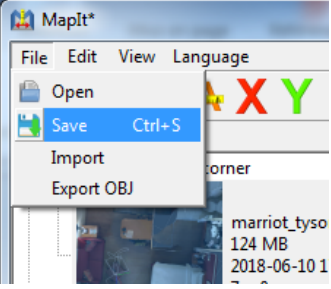
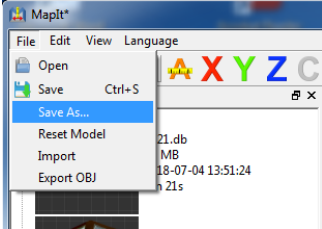
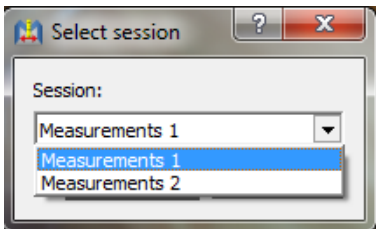


## Computer software prototype modifications (examples)

Feature before	Version(s)	Data collection	Feature after	Version
	0.3.0	Every time I want to erase a measure, I have to press the option again which is less practical [Interview4 – P1]	 	0.4.0
 	0.3.0	<p>Change the name "Ortho mode": it is not meaningful [Logbook – NC]</p> <p>Since "Ortho mode" is often used, why is it not included in the tool bar on the top of the screen? [Logbook – NC]</p> <p>In the right click menu there is a function "Camera -&gt; Ortho mode" that I would have put in the tool bar. [Interview6 – P2]</p>		0.4.0
	0.3.0	Absence of the option to save as. Saving then automatically deletes the original version. [Diary Day12 – P1]	 	0.4.0

The "Remove measurement" button stays active as long as it is not clicked a second time [Logbook – ML]

Added a "Plan view" button in the tool bar on the top of the screen. This replaces the Camera->Ortho mode function in the right click menu. [Logbook – ML]

Many measuring sessions can be saved in the same model with File -> Save As... to save measurements in a new session. When a model comprises more than one measurement

session, the desired session can be chosen from a scroll down menu in a dialog box when opening the model. [Logbook – ML]

0.4.0

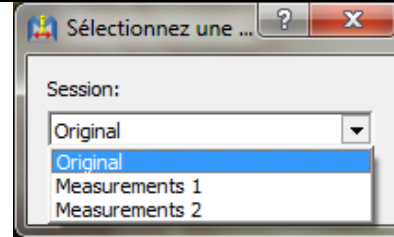
What does Polygon Picking mean? [Interview6 – P2]  
Right click language stays in English even if French option was chosen in Language menu [Logbook – NC]

Correction of translation problems in dialog buttons [Logbook – ML]

0.4.1

0.4.0

The software generates too many automatic measurements [Logbook – NC]

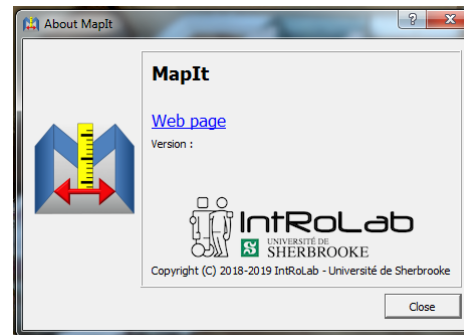
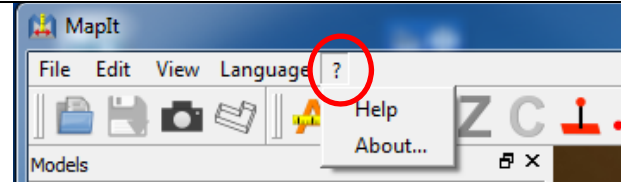
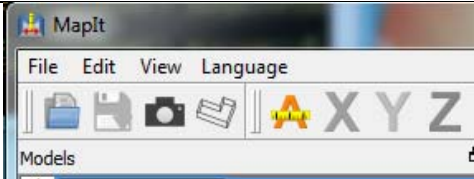


Addition of an "Original" measuring session (without automatic measurements) in the dialog box [Logbook – ML]

0.4.1

0.4.0

Add more information to software such as version number and help button [Logbook - ML]



Addition of a "?" menu containing "Help", redirecting to [https://introlab.3it.usherbrooke.ca/mediawiki-introlab/index.php/MapIt#Utilisation\\_de\\_MapIt](https://introlab.3it.usherbrooke.ca/mediawiki-introlab/index.php/MapIt#Utilisation_de_MapIt), and "About..." with a dialog box linking to same webpage. [Logbook – ML] (Note: version number was added to subsequent version 0.4.2)

0.4.1

Software coding only

0.4.1

When trying to open a scan on the software, I have a "fatal error" message and the software crashes [Logbook – NST]

Software coding only  
Solved an incompatibility between the last software version and app version following import of a model [Logbook – ML]

0.4.2