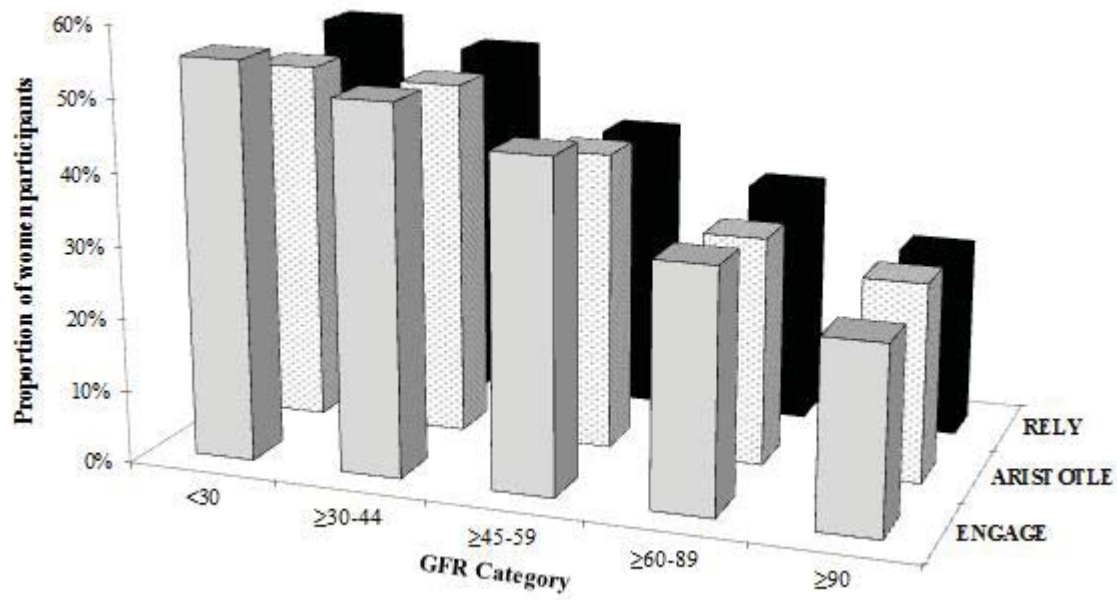


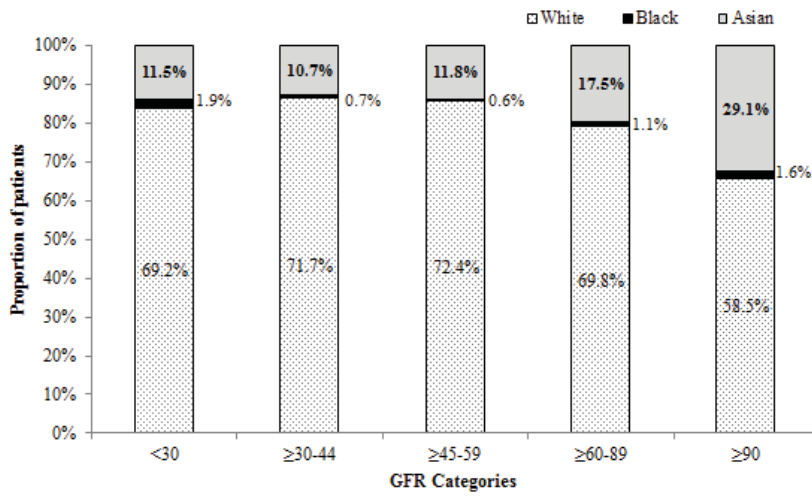
Figure S2: Representation of a) women, b) race, c) AF type and d) CHADS Score and e) antiplatelet co-therapy within each kidney function category in RE-LY, ARISTOTLE, and ENGAGE

2a: Representation of women by kidney function in RE-LY, ARISTOTLE, and ENGAGE

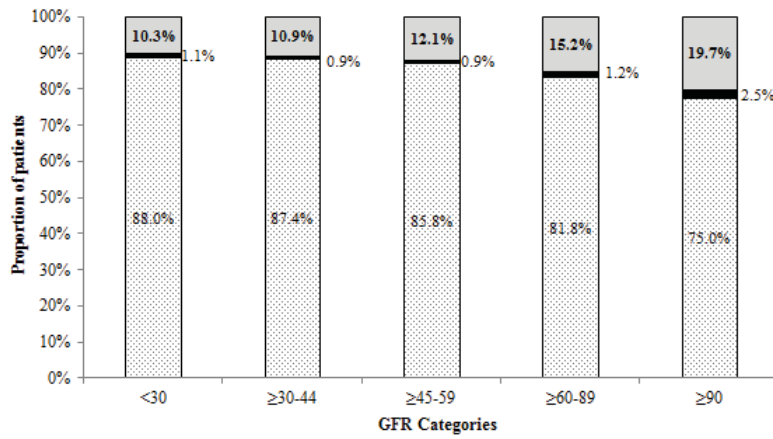


2b: Representation of race by kidney function

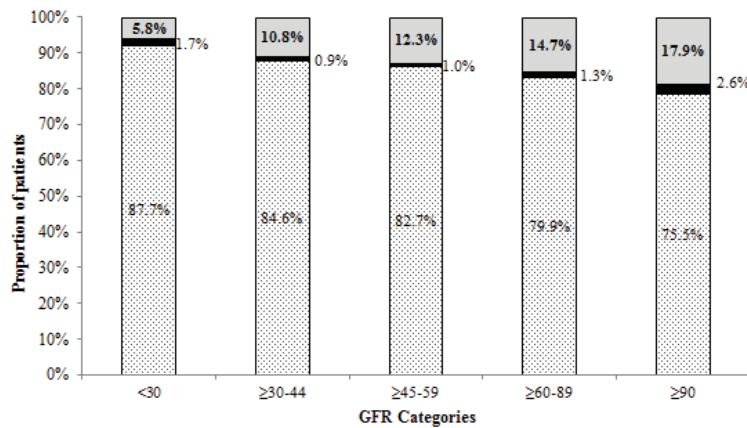
RE-LY



ARISTOTLE

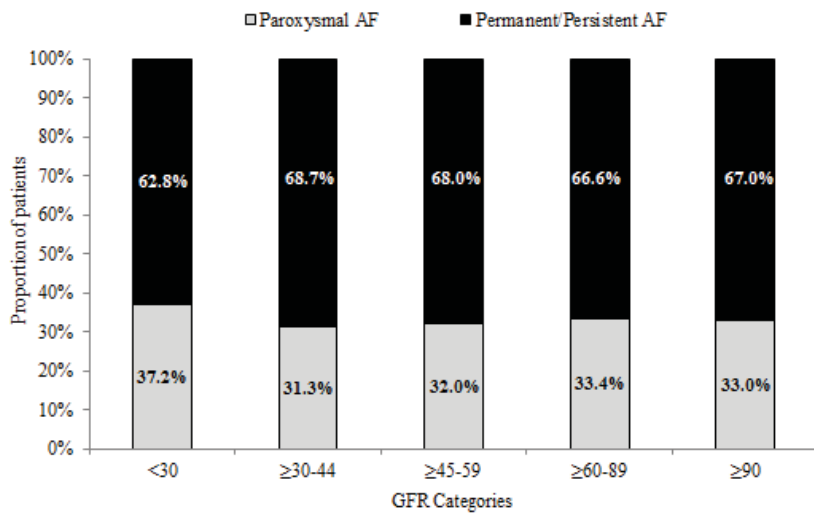


ENGAGE

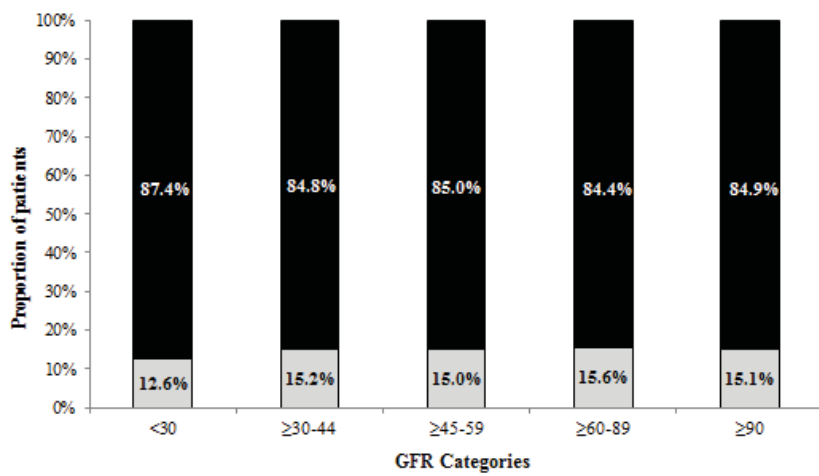


2C: Representation of AF types by kidney function in a) RE-LY, b) ARISTOTLE, and c) ENGAGE

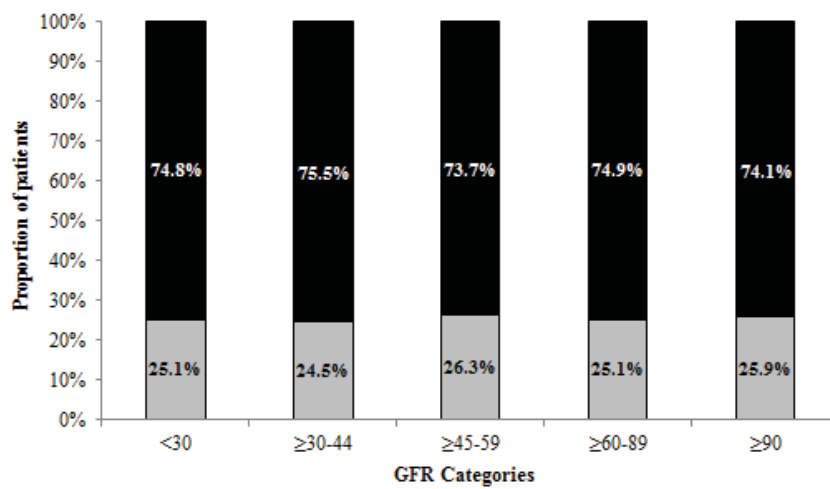
RE-LY



ARISTOTLE

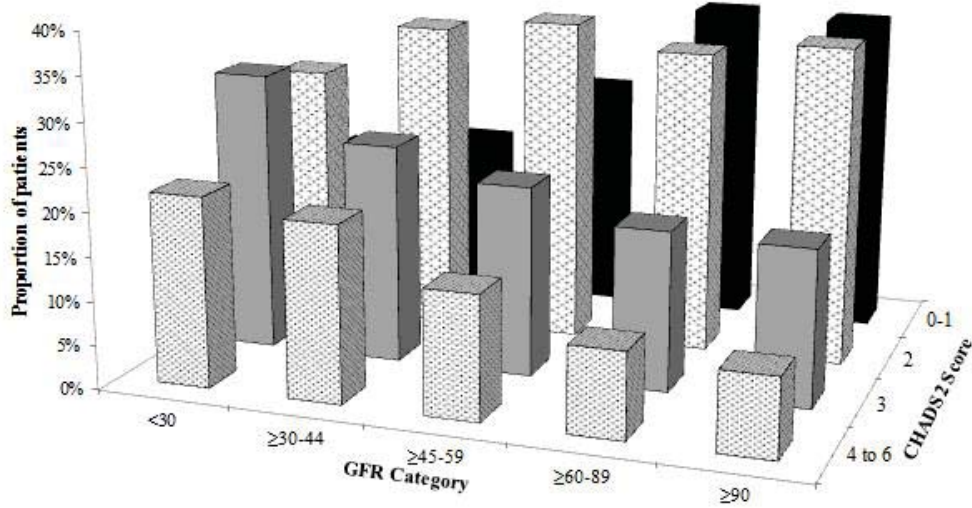


ENGAGE

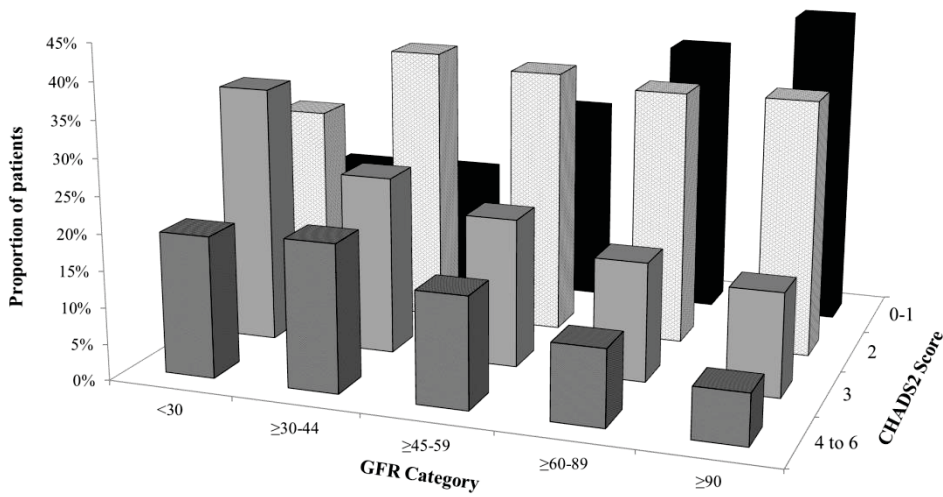


2d: Representation of CHADS₂ Score by kidney function

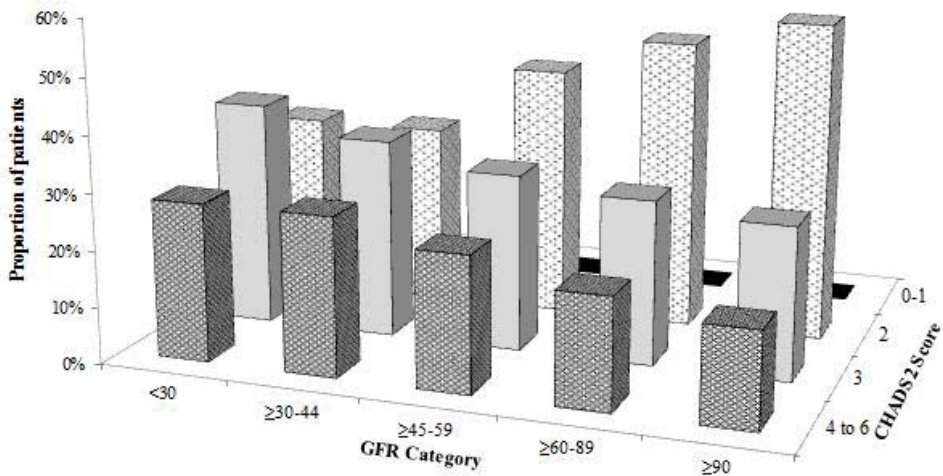
RE-LY



ARISTOTLE



ENGAGE



2e: Representation of users on antiplatelet co-therapy within each kidney function category in RE-LY, ARISTOTLE, and ENGAGE

