

## Kefir metabolites in a fly model for Alzheimer's Disease

Letícia Leandro Batista<sup>1\*</sup>, Serena Mares Malta<sup>1</sup>, Heitor Cappato Guerra Silva<sup>1</sup>, Luiza Diniz Ferreira Borges<sup>1</sup>, Lays Oliveira Rocha<sup>1</sup>, Jéssica Regina da Silva<sup>1</sup>, Tamiris Sabrina Rodrigues<sup>1</sup>, Gabriela Venturini<sup>2</sup>, Kallyandra Padilha<sup>3</sup>, Alexandre da Costa Pereira<sup>2</sup>, Foued Salmen Espindola<sup>1</sup>, Carlos Ueira-Vieira<sup>1\*</sup>.

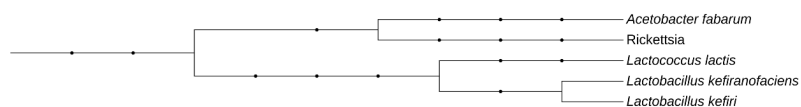
Excluído: Silva

<sup>1</sup> Institute of Biotechnology, Universidade Federal de Uberlândia, Uberlândia – Brazil.

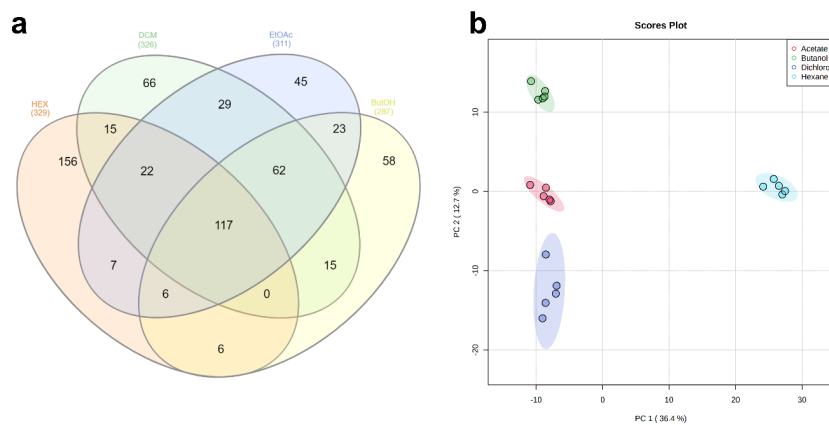
<sup>2</sup> Department of Genetics, Harvard Medical School, Boston, MA, USA.

<sup>3</sup> Laboratory of Genetics and Molecular Cardiology, Heart Institute, University of São Paulo Medical School, São Paulo, SP, Brazil.

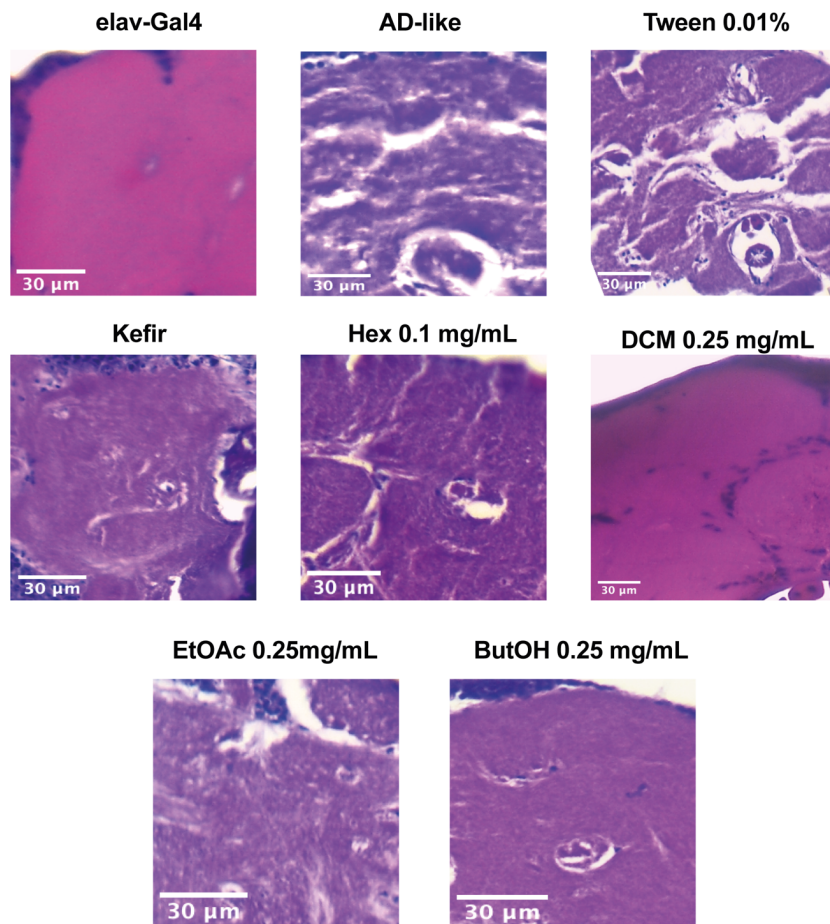
\*Corresponding authors: [batista@uni-mainz.de](mailto:batista@uni-mainz.de) and [ueira@ufu.br](mailto:ueira@ufu.br)



**Supplementary Figure S1.** Phylogenetic tree of the OTUs found in kefir microbiota.



**Supplementary Figure S2 a.** Venn diagram of compounds present in each fraction **b.** PCA analysis of fractions metabolites (MetaboAnalyst).



**Supplementary Figure S3.** Representative histopathology analysis of elav-Gal4 (control), and AD-like flies (non-treated, and treated with kefir, Tween80 0.01% or fractions). N = 10.