

## The Uncropped Blot of Cyclin D1 (34kDa)-1

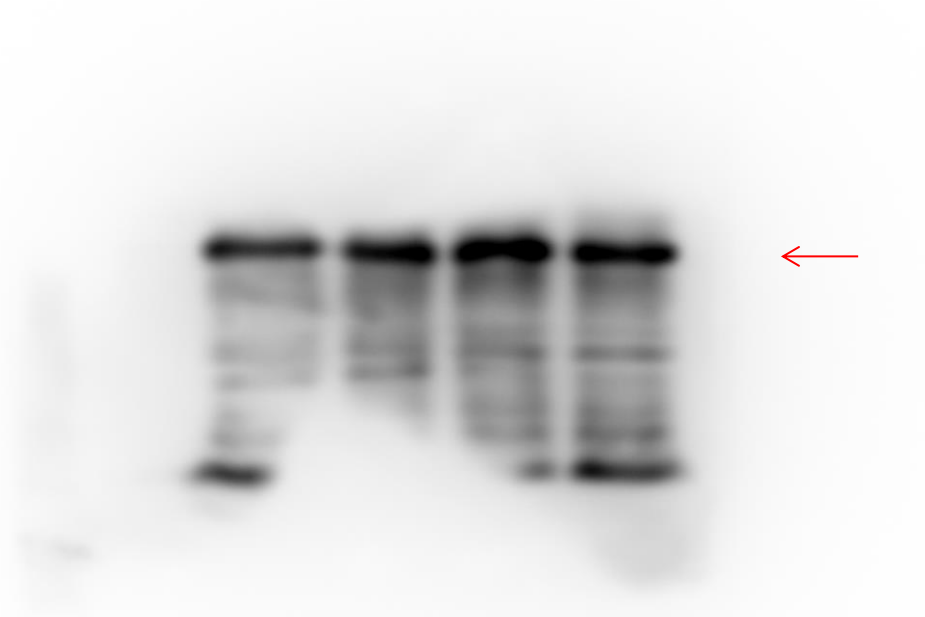


Figure 1.1 The Uncropped Blot of Cyclin D1 (34kDa)-1. The red arrow indicates the location of target bands.

The Uncropped Blot of Cyclin D1 (34kDa)-2



Figure 1.2 The Uncropped Blot of Cyclin D1 (34kDa)-2. The red arrow indicates the location of target bands.

### The Uncropped Blot of Cyclin D1 (34kDa)-3

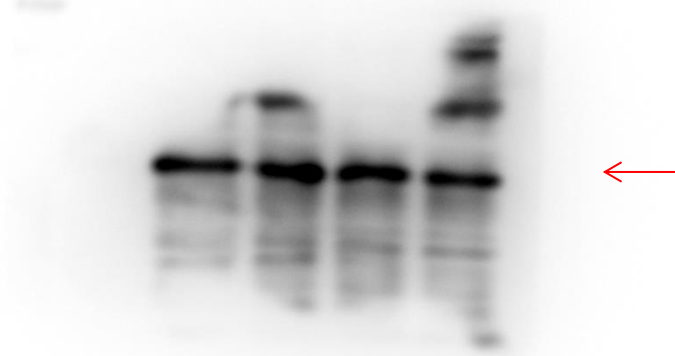


Figure 1.3 The Uncropped Blot of Cyclin D1 (34kDa)-3. The red arrow indicates the location of target bands.

The Uncropped Blot of ANGPTL2 (57kDa)-1

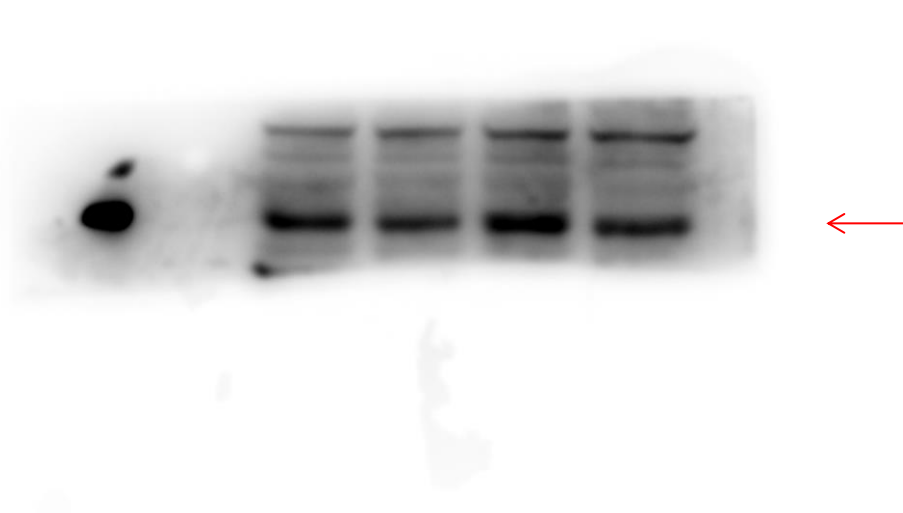


Figure 2.1 The Uncropped Blot of ANGPTL2 (57kDa)-1. The red arrow indicates the location of target bands.

The Uncropped Blot of ANGPTL2 (57kDa)-2

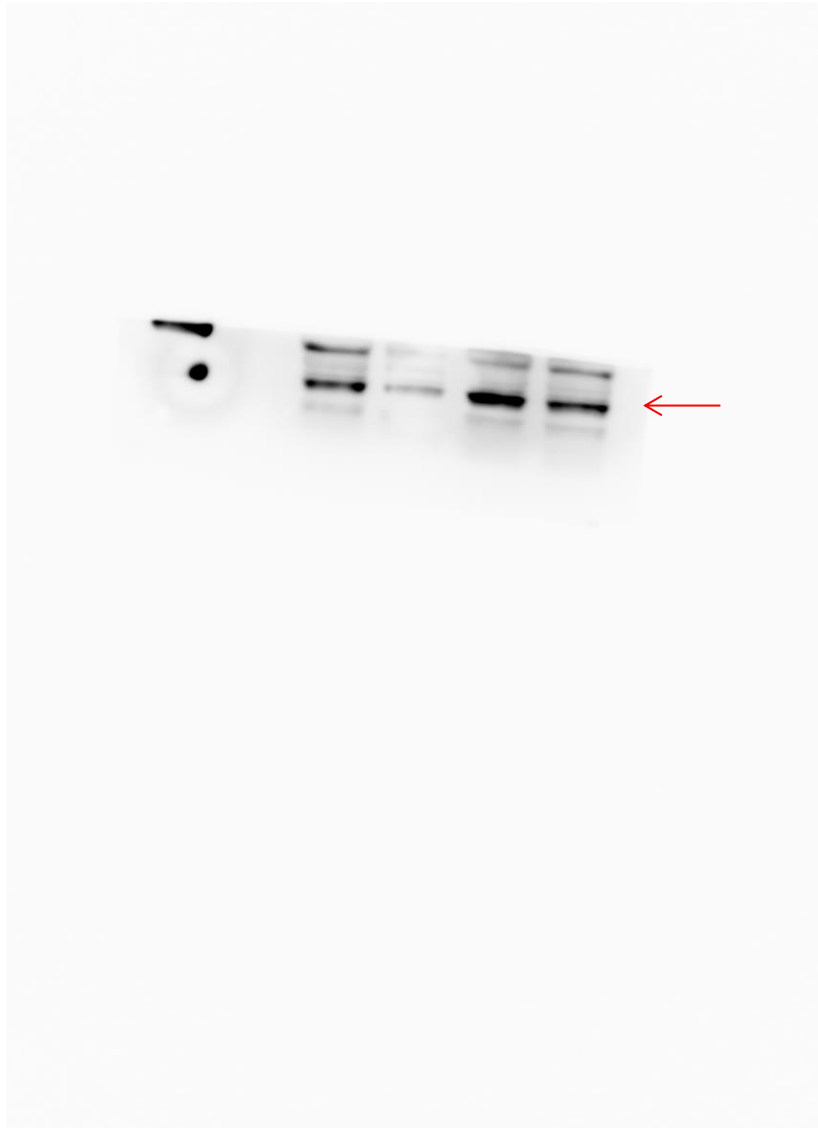


Figure 2.2 The Uncropped Blot of ANGPTL2 (57kDa)-2. The red arrow indicates the location of target bands.

The Uncropped Blot of ANGPTL2 (57kDa)-3

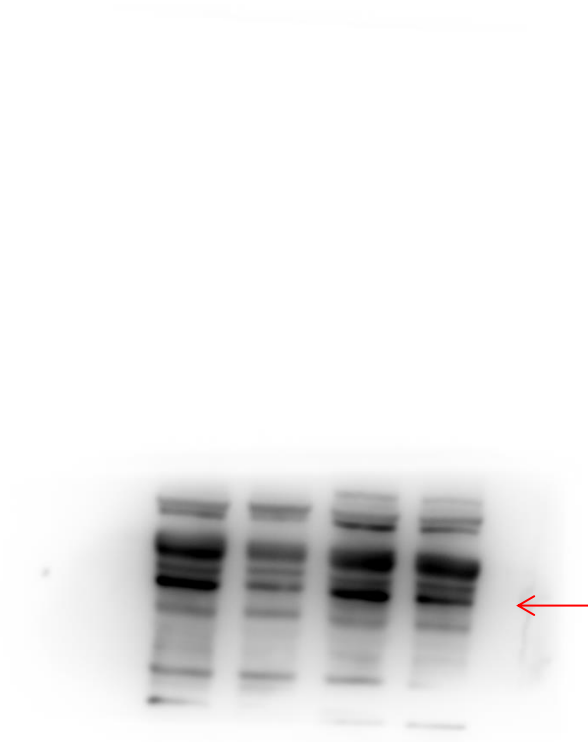


Figure 2.3 The Uncropped Blot of ANGPTL2 (57kDa)-3. The red arrow indicates the location of target bands.

The Uncropped Blot of EGR1 (56kDa)-1

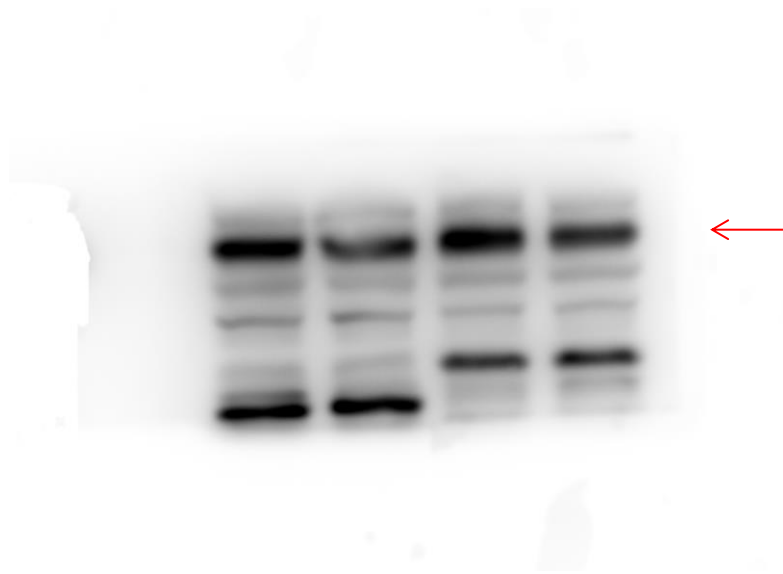


Figure 3.1 The Uncropped Blot of EGR1 (56kDa)-1. The red arrow indicates the location of target bands.

The Uncropped Blot of EGR1 (56kDa)-2

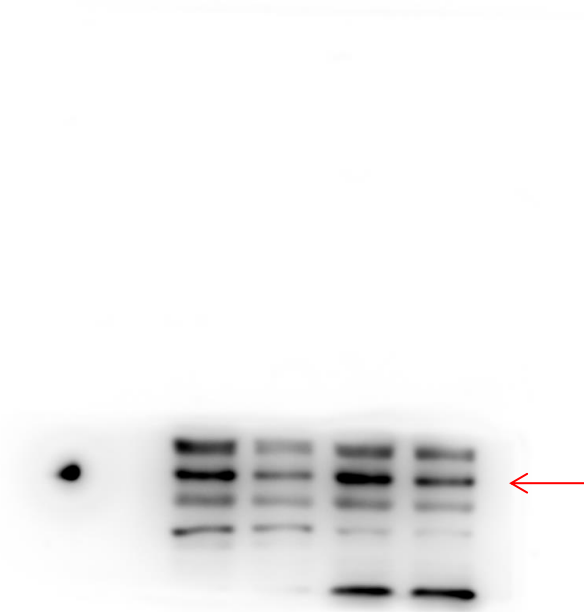


Figure 3.2 The Uncropped Blot of EGR1 (56kDa)-2. The red arrow indicates the location of target bands.



The Uncropped Blot of EGR1 (56kDa)-3

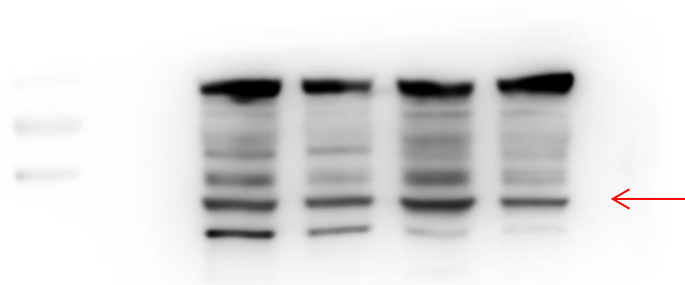


Figure 3.3 The Uncropped Blot of EGR1 (56kDa)-3. The red arrow indicates the location of target bands.

The Uncropped Blot of  $\beta$ -actin (42kDa)



Figure 4 The Uncropped Blot of  $\beta$ -actin (42kDa). The red arrow indicates the location of target bands.

The Uncropped Blot of  $\beta$ -catenin (92kDa) in Nucleus-1

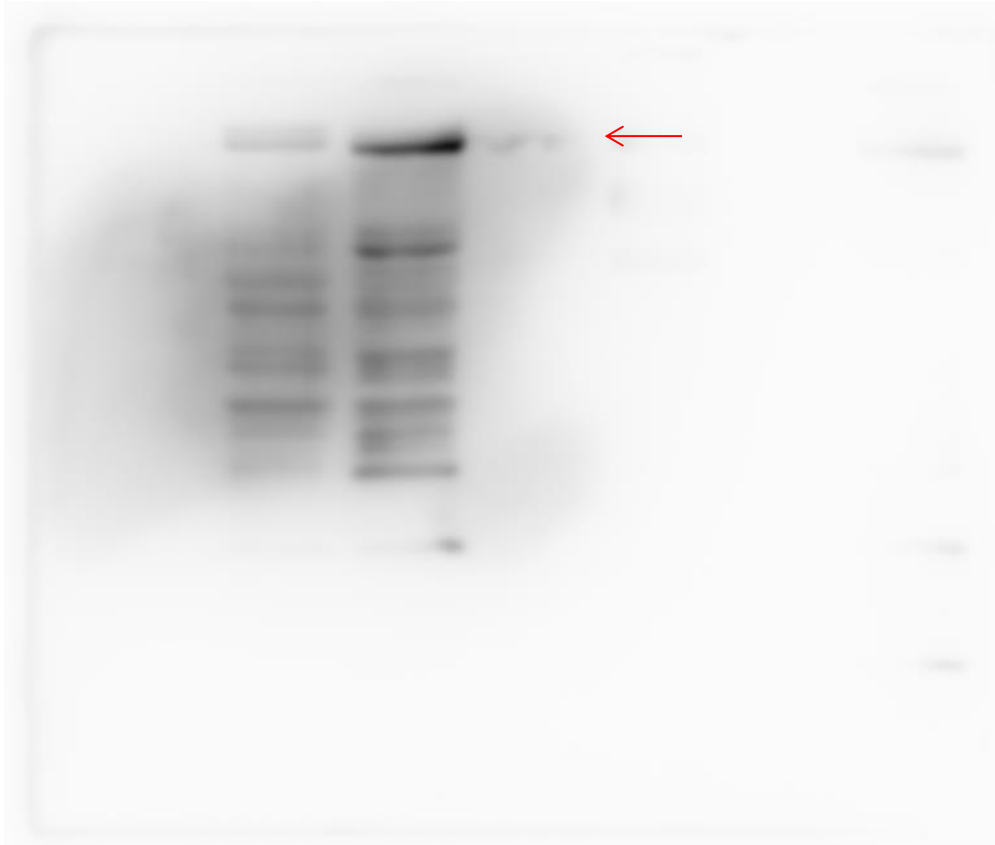


Figure 5.1 The Uncropped Blot of  $\beta$ -catenin (92kDa) in Nucleus-1. The red arrow indicates the location of target bands.

The Uncropped Blot of  $\beta$ -catenin (92kDa) in Nucleus-2

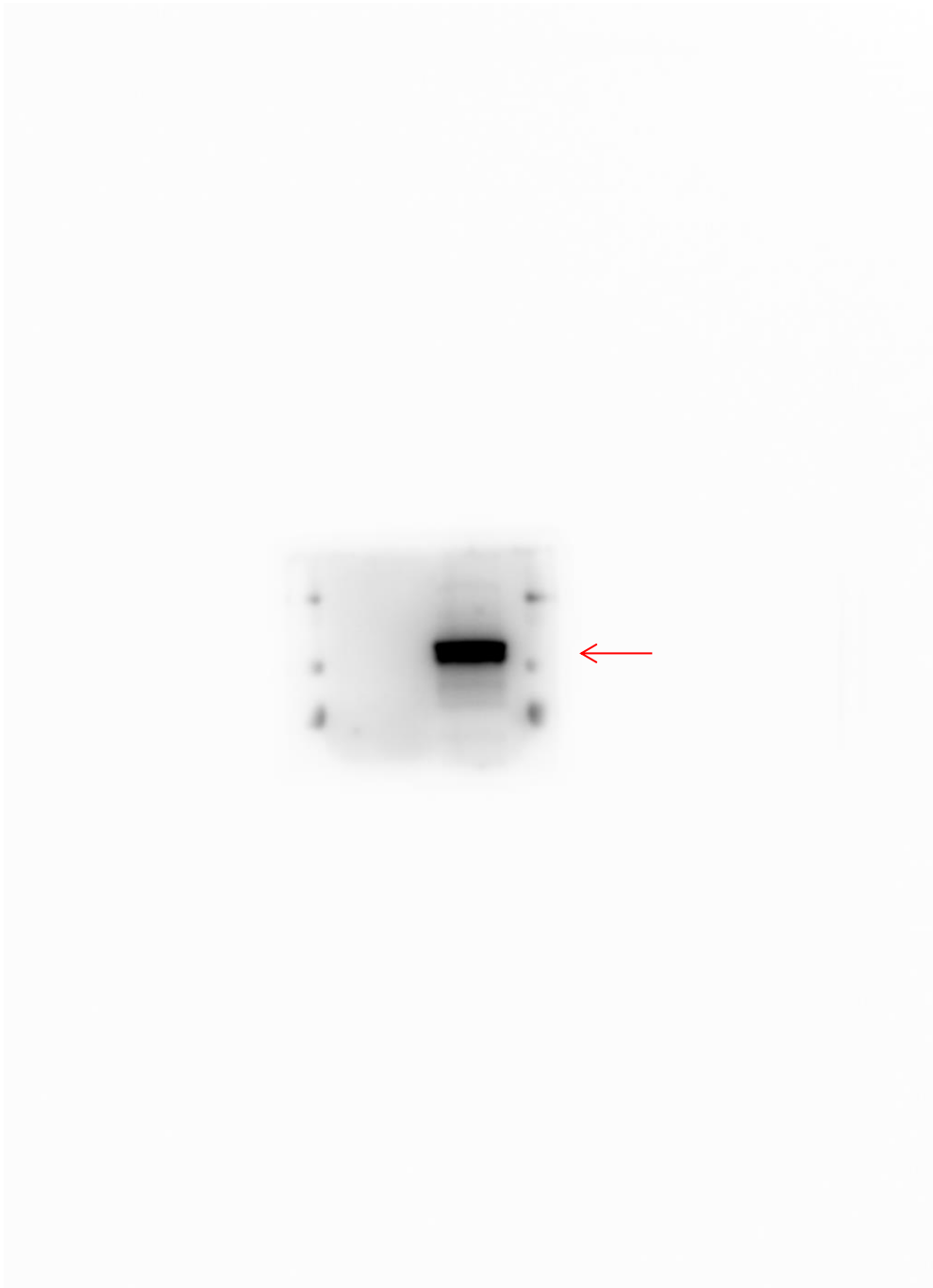


Figure 5.2 The Uncropped Blot of  $\beta$ -catenin (92kDa) in Nucleus-2. The red arrow indicates the location of target bands.

The Uncropped Blot of  $\beta$ -catenin (92kDa) in Nucleus-3

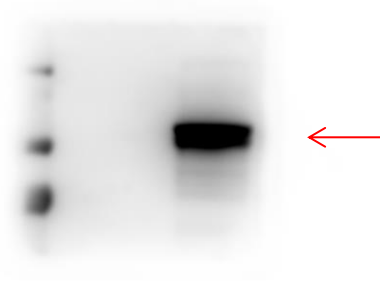


Figure 5.3 The Uncropped Blot of  $\beta$ -catenin (92kDa) in Nucleus-3. The red arrow indicates the location of target bands.

The Uncropped Blot of  $\beta$ -actin (42kDa)



Figure 6 The Uncropped Blot of  $\beta$ -actin (42kDa). The red arrow indicates the location of target bands.

The Uncropped blot of  $\beta$ -catenin (92kDa)-1

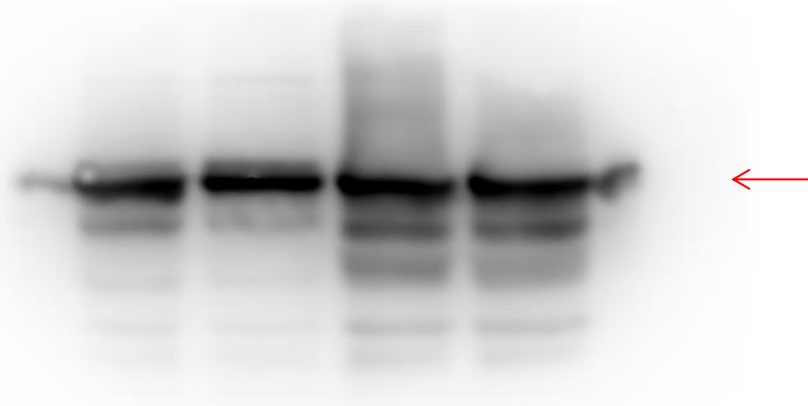


Figure 7.1 The Uncropped blot of  $\beta$ -catenin (92kDa)-1. The red arrow indicates the location of target bands.

The Uncropped blot of  $\beta$ -catenin (92kDa)-2

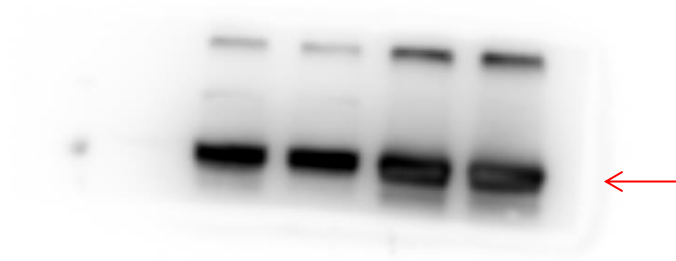


Figure 7.2 The Uncropped blot of  $\beta$ -catenin (92kDa)-2. The red arrow indicates the location of target bands.



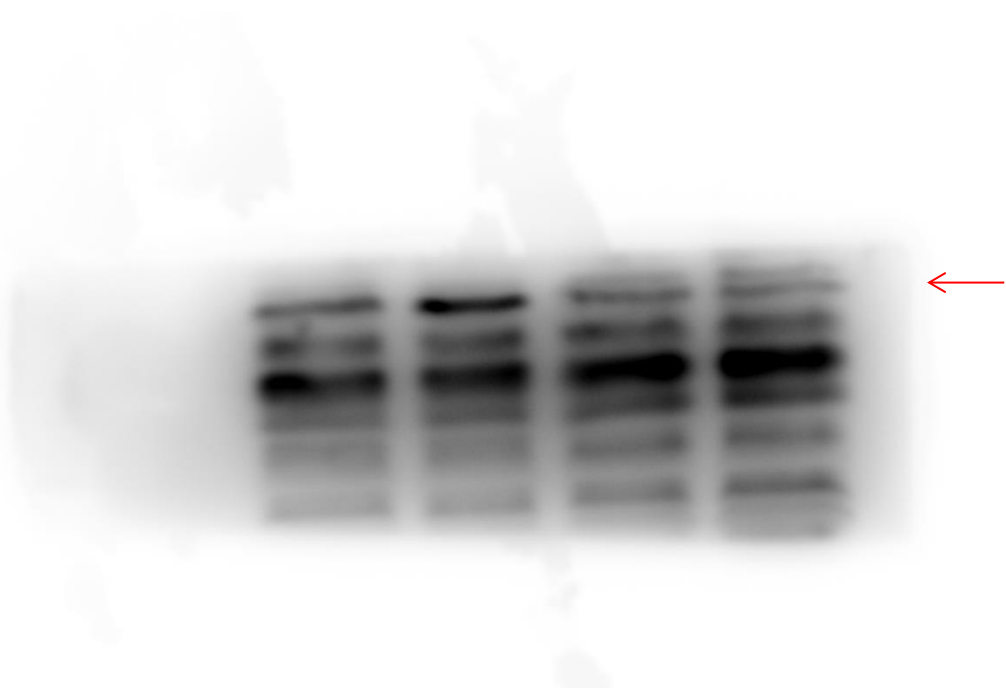
The Uncropped blot of  $\beta$ -catenin (92kDa)-3



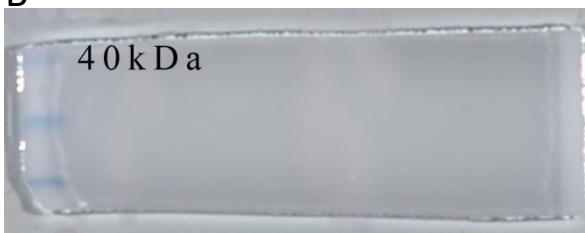
Figure 7.3 The Uncropped blot of  $\beta$ -catenin (92kDa)-3. The red arrow indicates the location of target bands.

The Uncropped blot of WNT7B (39kDa)-1

A



B



C

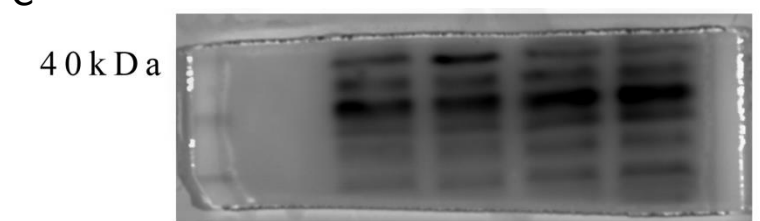


Figure 8.1 The Uncropped blot of WNT7B (39kDa)-1. (A) The Origin Picture of  $\beta$ -catenin. The red arrow indicates the location of target bands. (B) The Marker of  $\beta$ -catenin. (C) The Merge of Blot and Marker.

The Uncropped blot of WNT7B (39kDa)-2



Figure 8.2 The Uncropped blot of WNT7B (39kDa)-2. The red arrow indicates the location of target bands.

The Uncropped blot of WNT7B (39kDa)-3



Figure 8.3 The Uncropped blot of WNT7B (39kDa)-3. The red arrow indicates the location of target bands.

The Uncropped blot of FZD8 (60kDa)-1

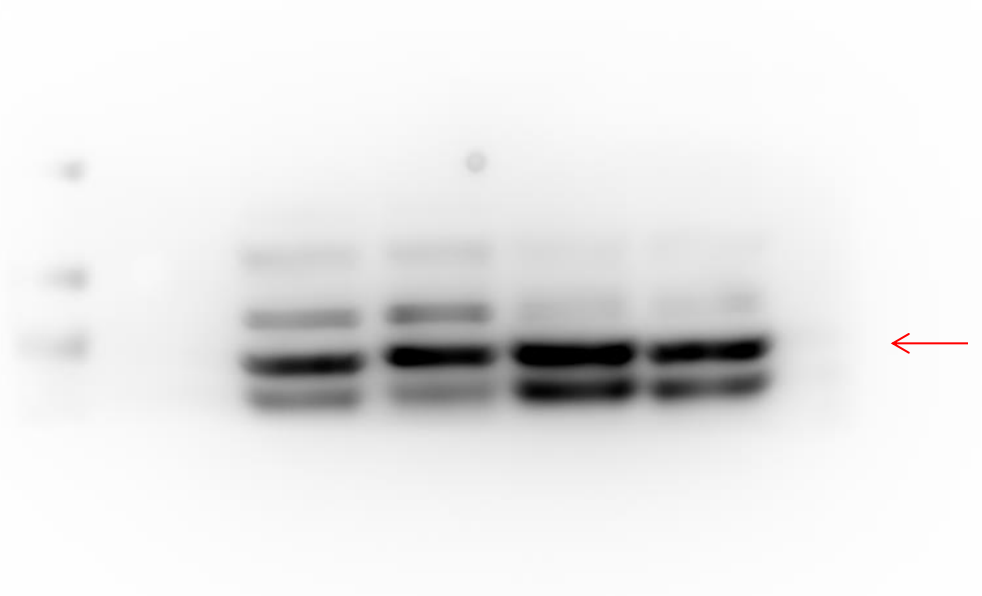


Figure 9.1 The Uncropped blot of FZD8 (60kDa)-1. The red arrow indicates the location of target bands.

The Uncropped blot of FZD8 (60kDa)-2



Figure 9.2 The Uncropped blot of FZD8 (60kDa)-2. The red arrow indicates the location of target bands.

The Uncropped blot of FZD8 (60kDa)-3

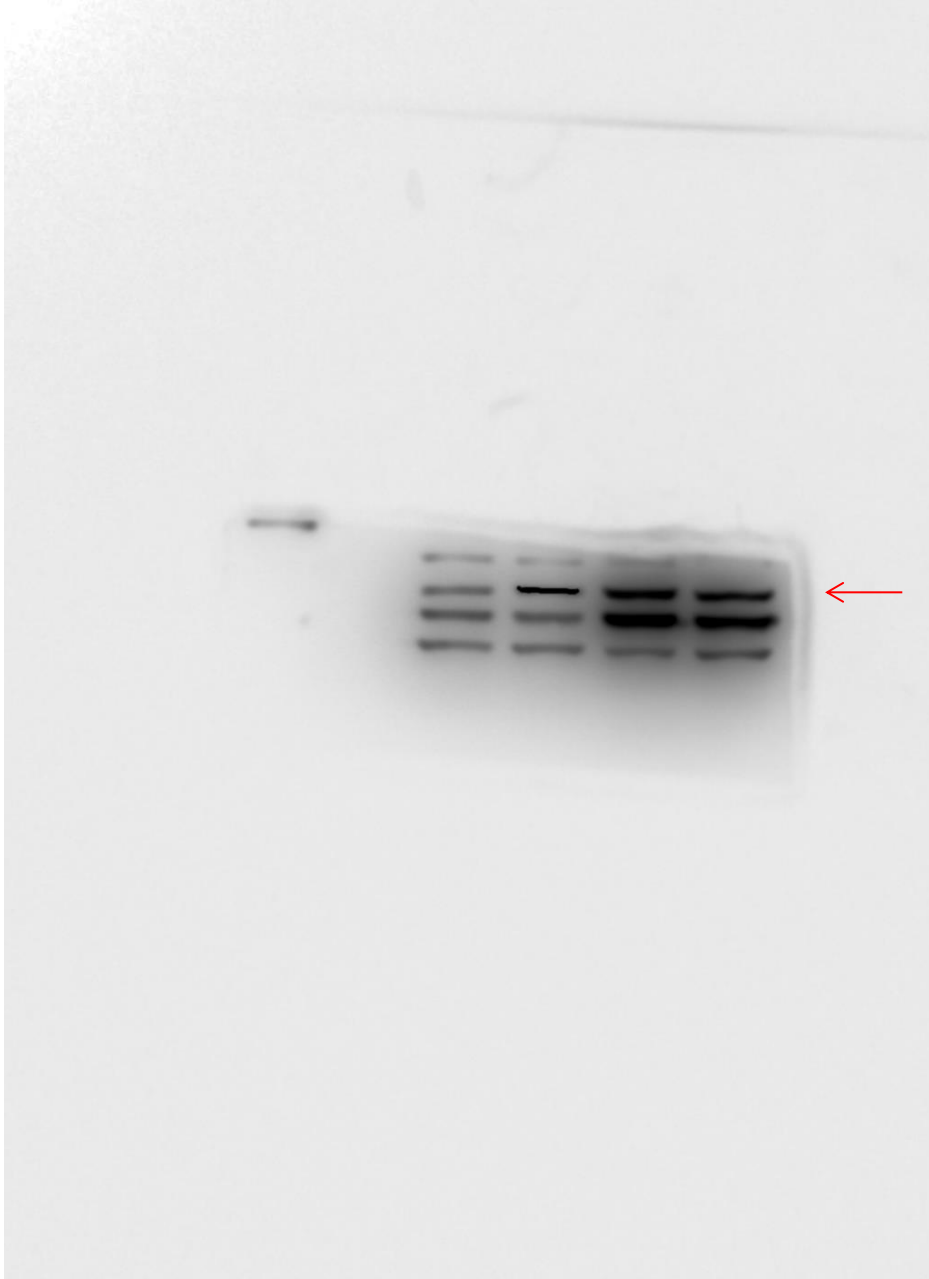


Figure 9.3 The Uncropped blot of FZD8 (60kDa)-3. The red arrow indicates the location of target bands.

The Uncropped Blot of  $\beta$ -actin (42kDa)

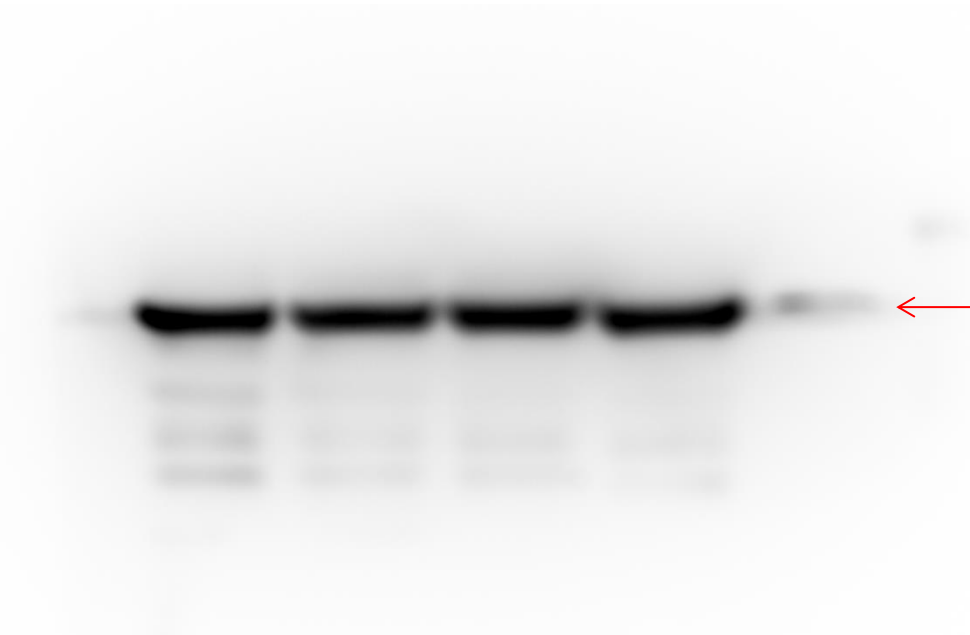
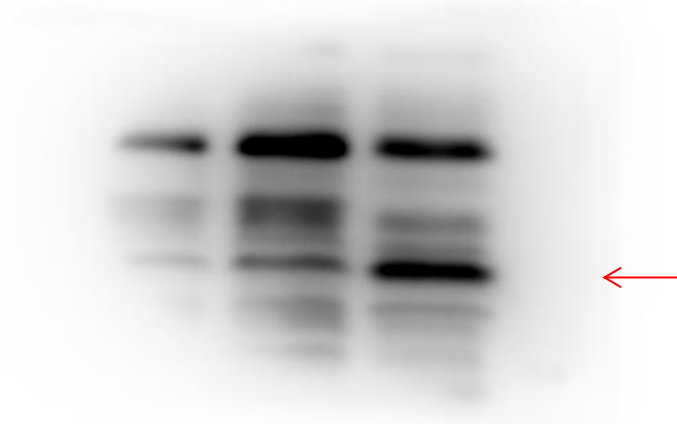


Figure 10 The Uncropped Blot of  $\beta$ -actin (42kDa). The red arrow indicates the location of target bands.



The Uncropped blot of Phospho-Caspase 3 (34kDa)-1

A



B



C

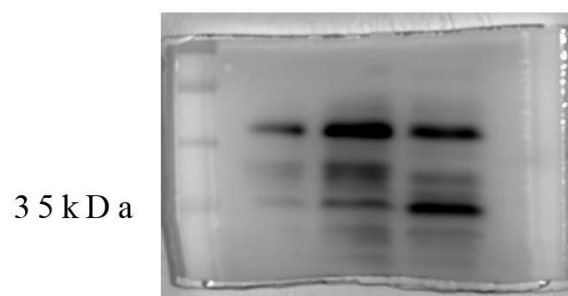


Figure 11.1 The Uncropped blot of Phospho-Caspase 3 (34kDa)-1. (A) The Origin Picture of Phospho-Caspase 3. The red arrow indicates the location of target bands. (B) The Marker of Phospho-Caspase 3. (C) The Merge of Blot and Marker.

The Uncropped blot of Phospho-Caspase 3 (34kDa)-2

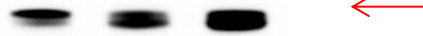


Figure 11.2 The Uncropped blot of Phospho-Caspase 3 (34kDa)-2. The red arrow indicates the location of target bands.

The Uncropped blot of Phospho-Caspase 3 (34kDa)-3



Figure 11.3 The Uncropped blot of Phospho-Caspase 3 (34kDa)-3. The red arrow indicates the location of target bands.

The Uncropped Blot of Caspase 3 (37kDa)-1



Figure 12.1 The Uncropped Blot of Caspase 3 (37kDa)-1. The red arrow indicates the location of target bands.

The Uncropped Blot of Caspase 3 (37kDa)-2

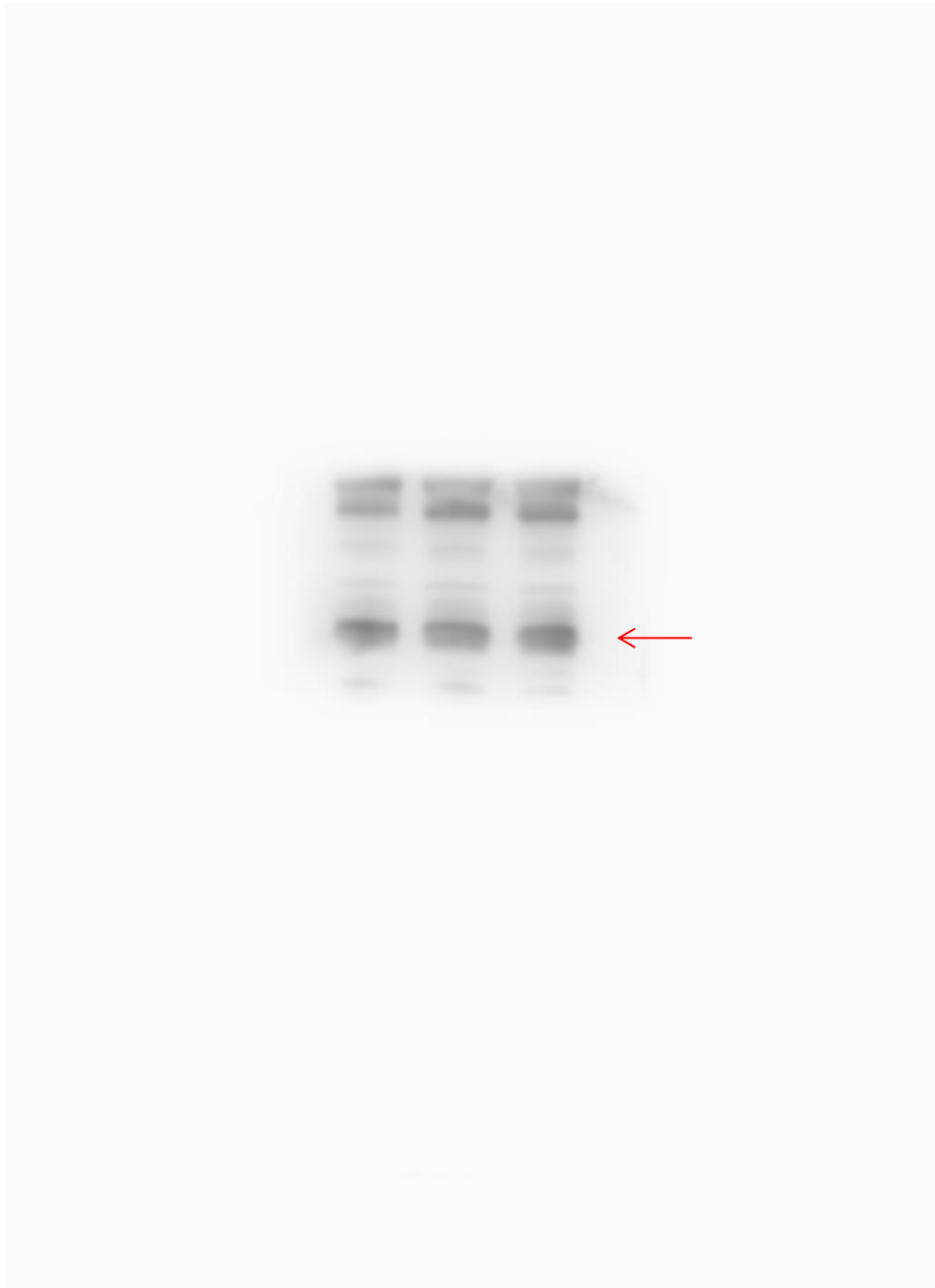


Figure 12.2 The Uncropped Blot of Caspase 3 (37kDa)-2. The red arrow indicates the location of target bands.

### The Uncropped Blot of Caspase 3 (37kDa)-3



Figure 12.3 The Uncropped Blot of Caspase 3 (37kDa)-3. The red arrow indicates the location of target bands.

The Uncropped Blot of  $\beta$ -actin (42kDa)

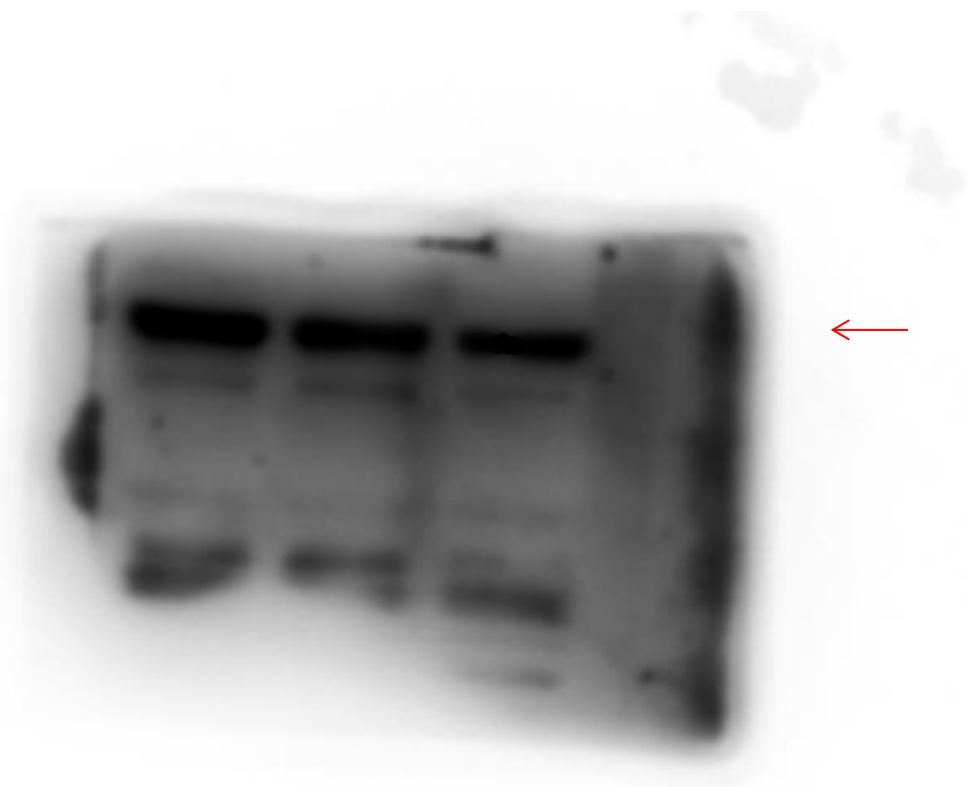


Figure 13 The Uncropped Blot of  $\beta$ -actin (42kDa). The red arrow indicates the location of target bands.