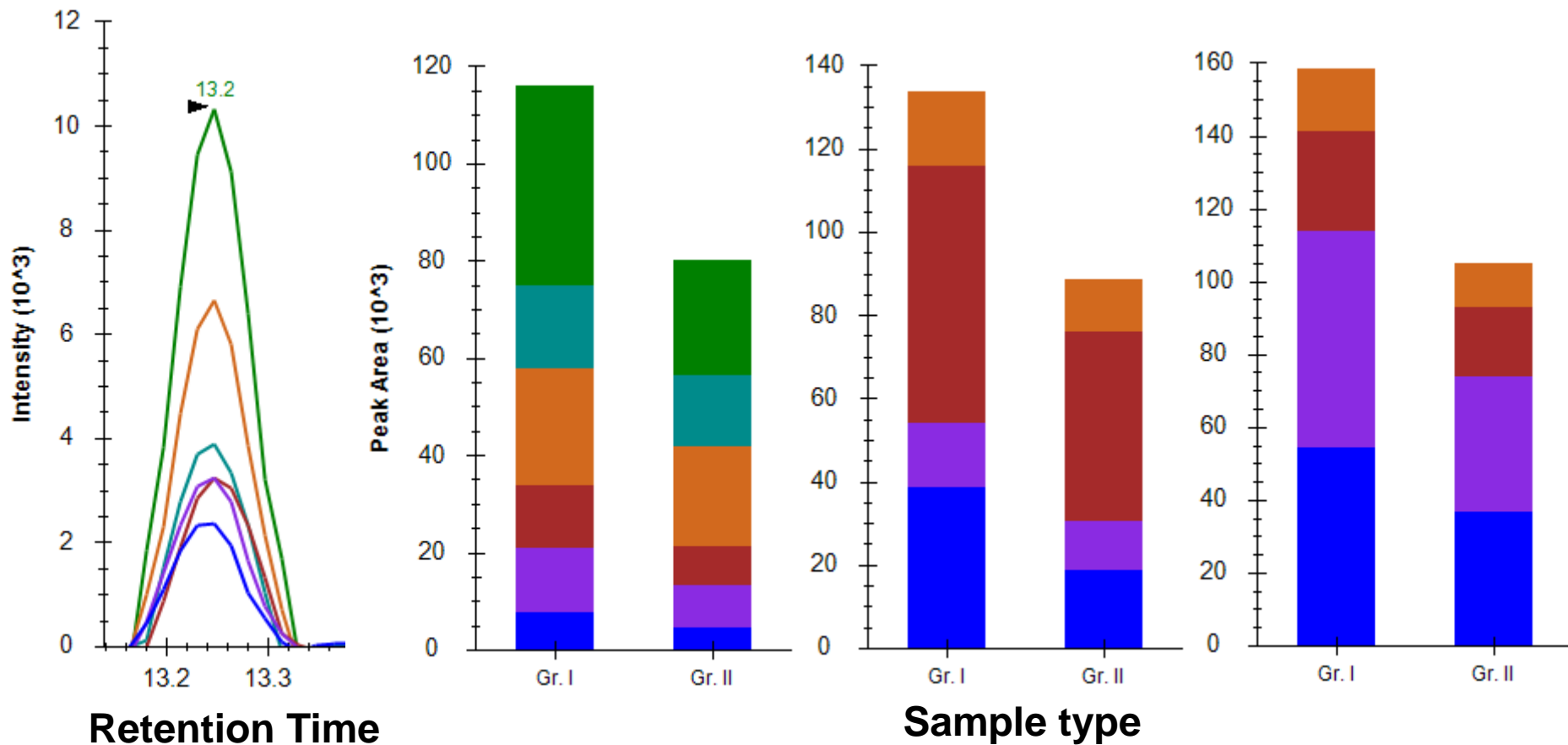


## Supplementary Figure 2A

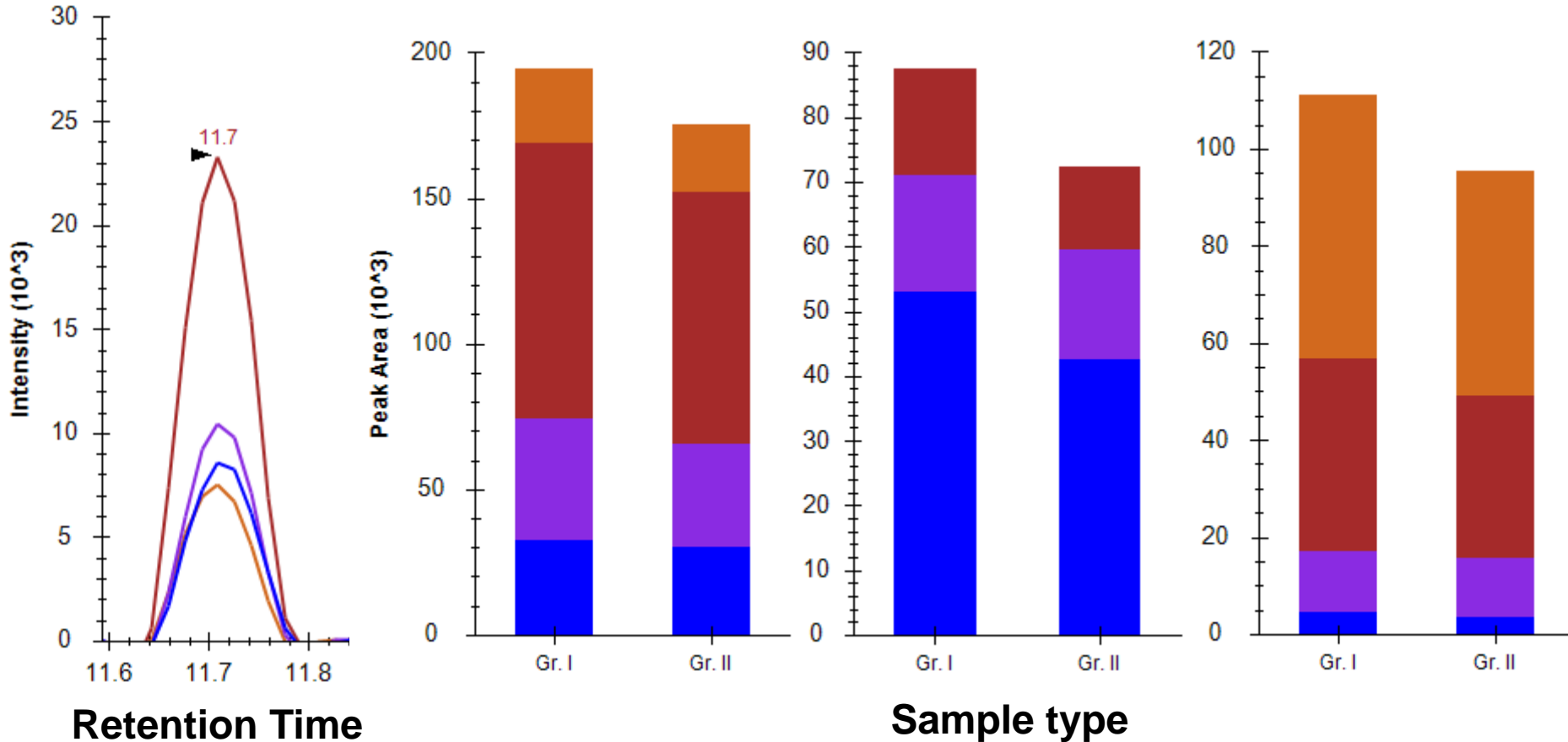
### Vitronectin (Meningioma CSF)



Representative MRM peak and bar graphs for SIAQYWLGCAPAGHL, FEDGVLDPDYPR and DVWGIEGPIDAAFTR of Vitronectin respectively, showing overexpression in Grade I as compared to Grade II.

## Supplementary Figure 2A

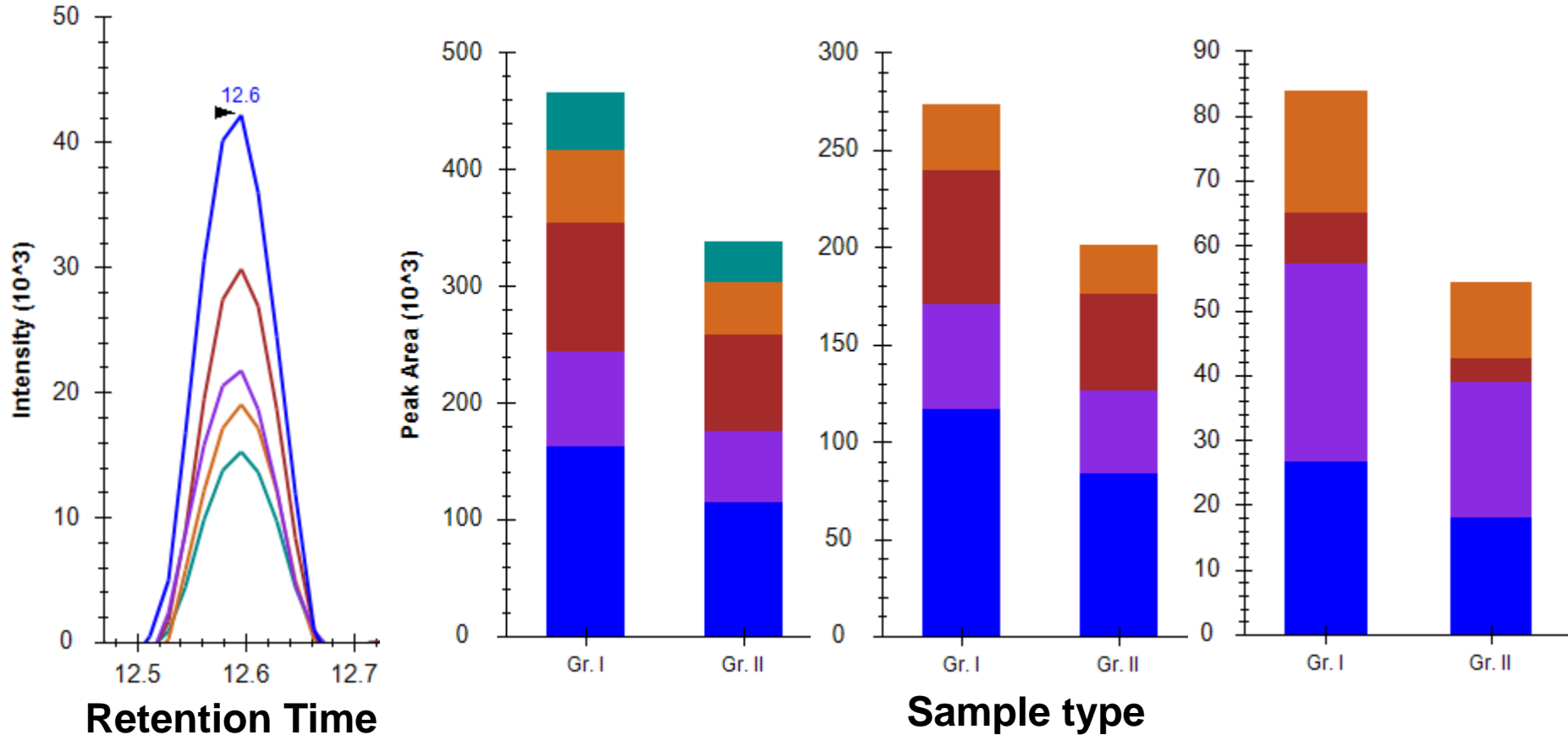
### Complement C3 (Meningioma CSF)



Representative MRM peak and bar graphs for LVAYYTLIGASGQR, TGLQEVEVK and SGSDEVQVGQQR of Complement C3 respectively, showing overexpression in Grade I as compared to Grade II.

## Supplementary Figure 2A

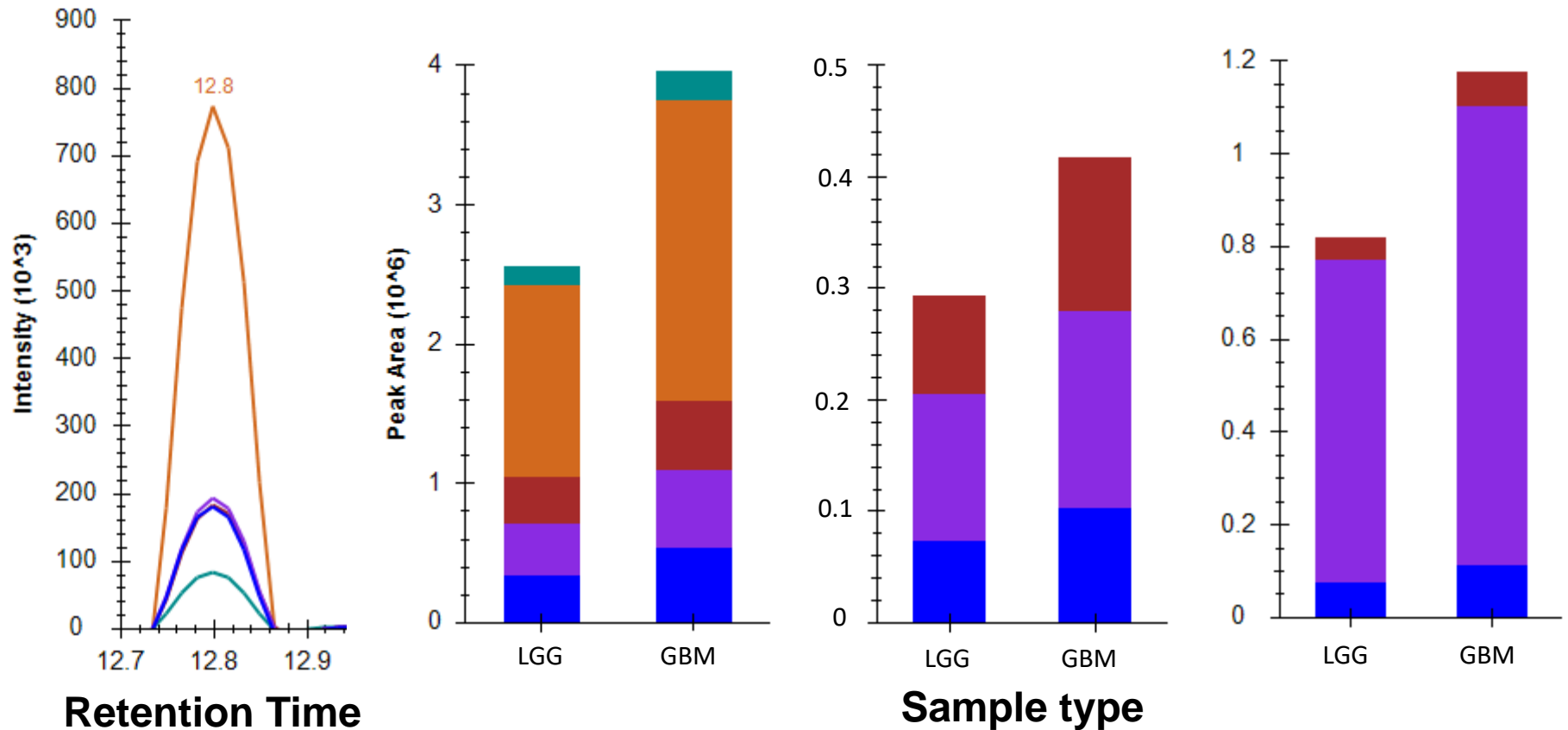
### Apolipoprotein A1 (Meningioma CSF)



Representative MRM peak and bar graphs for LLDNWDSVTSTFSK, DYVSQFEGSALGK and ATEHLSTLSEK of Apolipoprotein A1 respectively, showing overexpression in Grade I as compared to Grade II.

## Supplementary Figure 2B

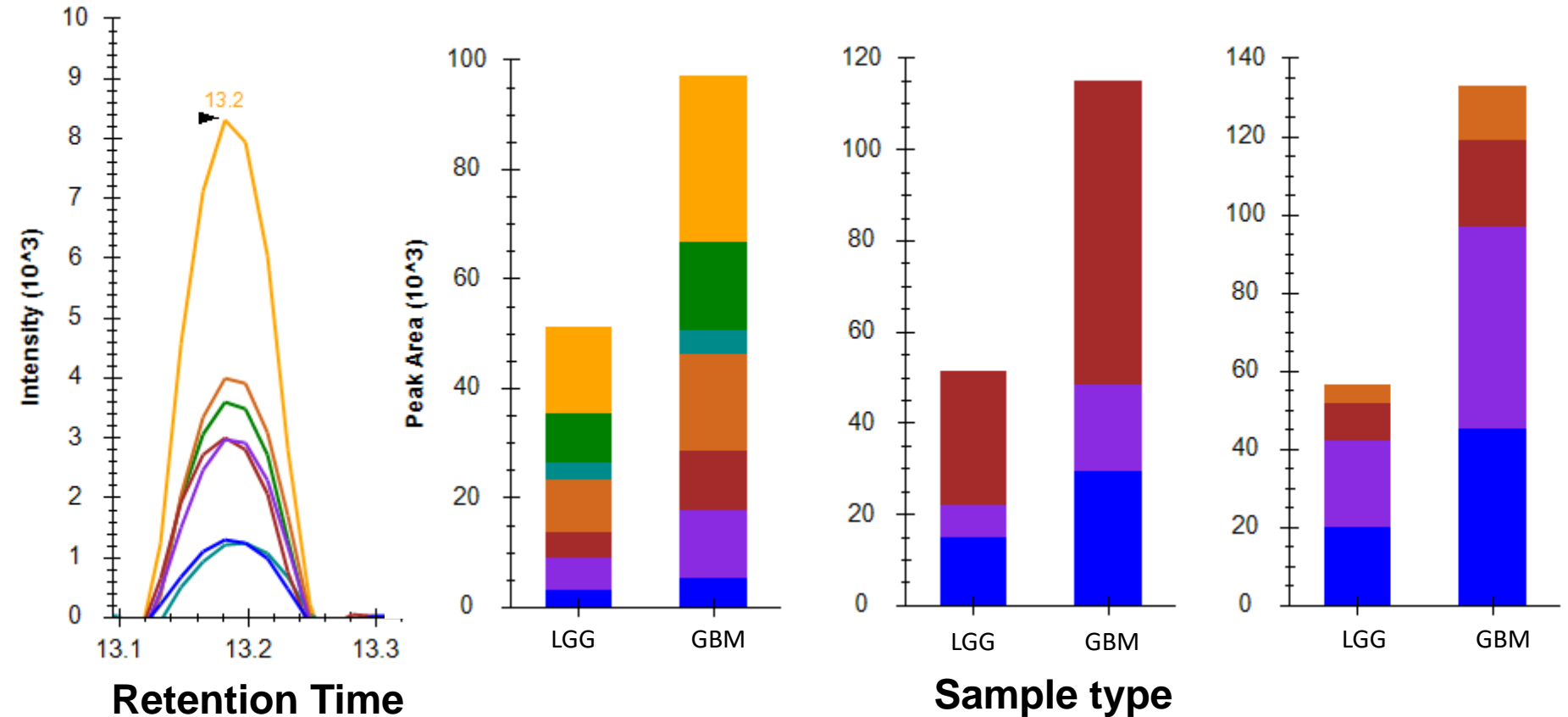
### Prostaglandin-H2 D-isomerase (Glioma CSF)



Representative MRM peak and bar graphs for TMLLQPAGSLGSYSYR, WFSAGLASNSSWLR and AQQFTEDTIVFLPQTDK of PTGDS respectively, showing overexpression in GBM as compared to LGG.

## Supplementary Figure 2B

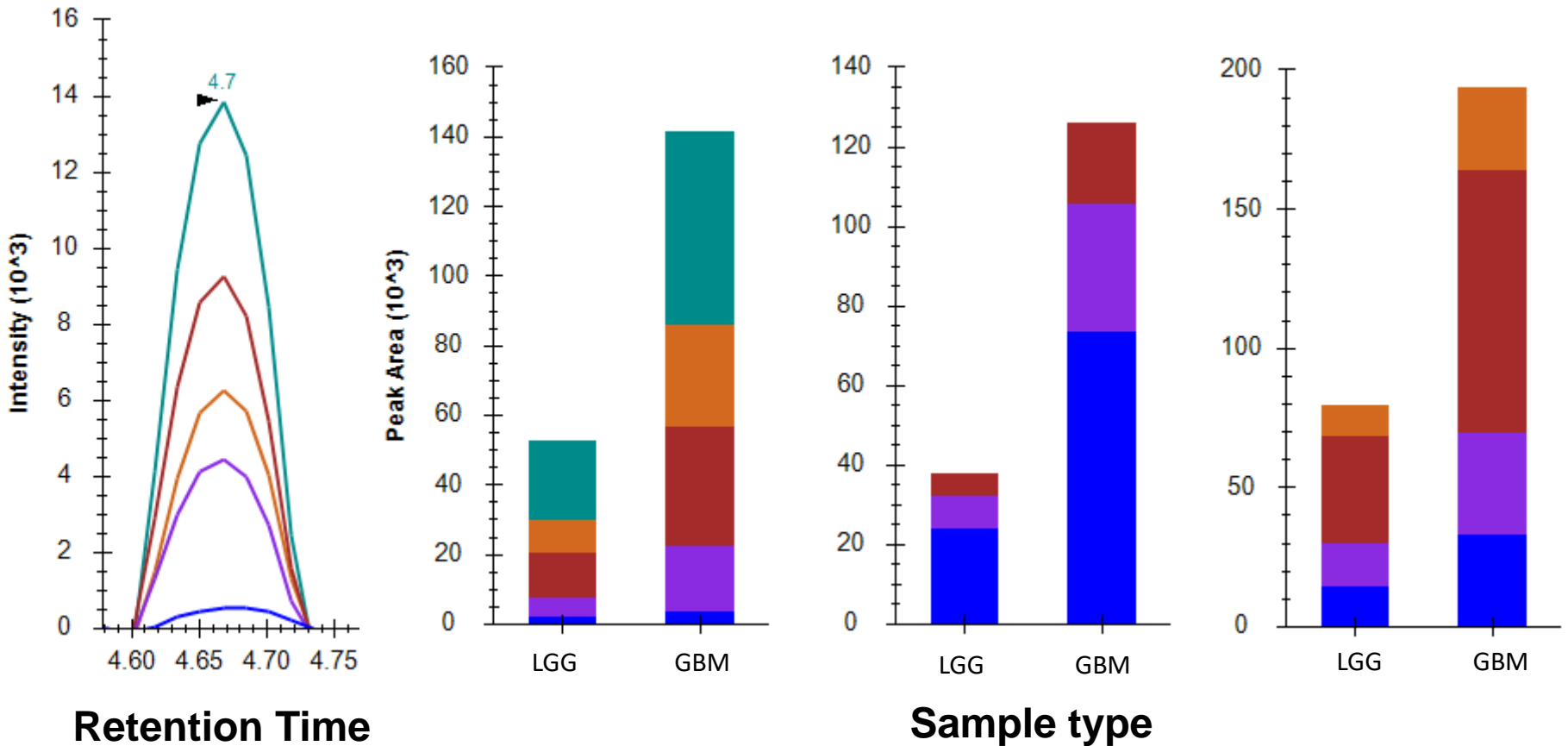
### Vitronectin (Glioma CSF)



Representative MRM peak and bar graphs for SIAQYWLGC P APGHL, FEDGVLD P DYPR and DVWGIEGPIDAA FTR of Vitronectin respectively, showing overexpression in GBM as compared to LGG.

## Supplementary Figure 2B

### Complement C3 (Glioma CSF)



Representative MRM peak and bar graphs for SGSDEVQVGQQR, TGLQEVEVK and LVAYYTLIGASGQR of Complement C3 respectively, showing overexpression in GBM as compared to LGG.