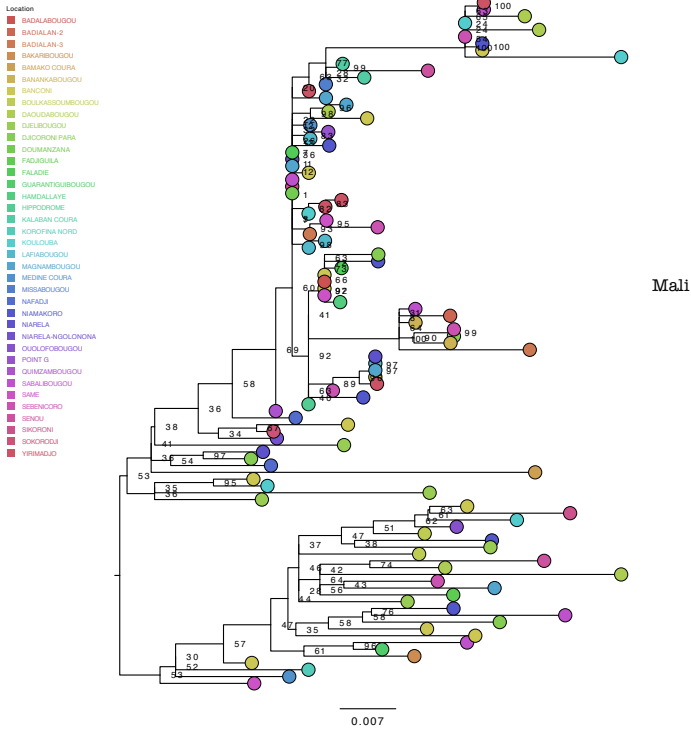
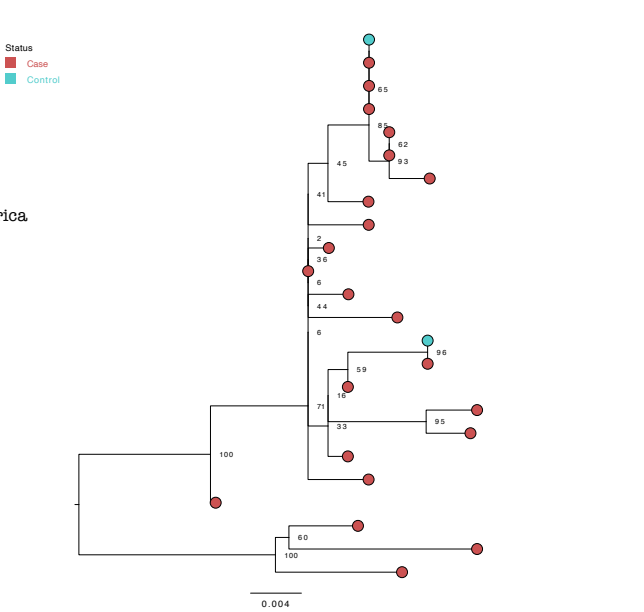
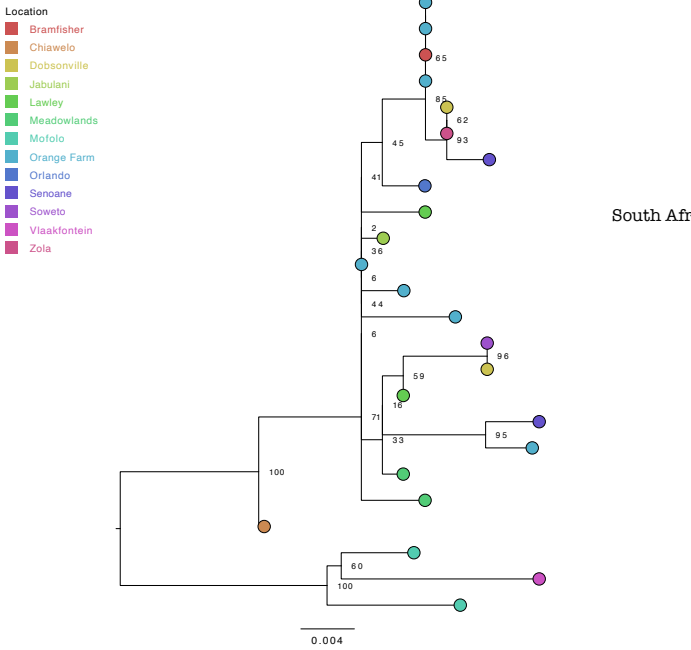
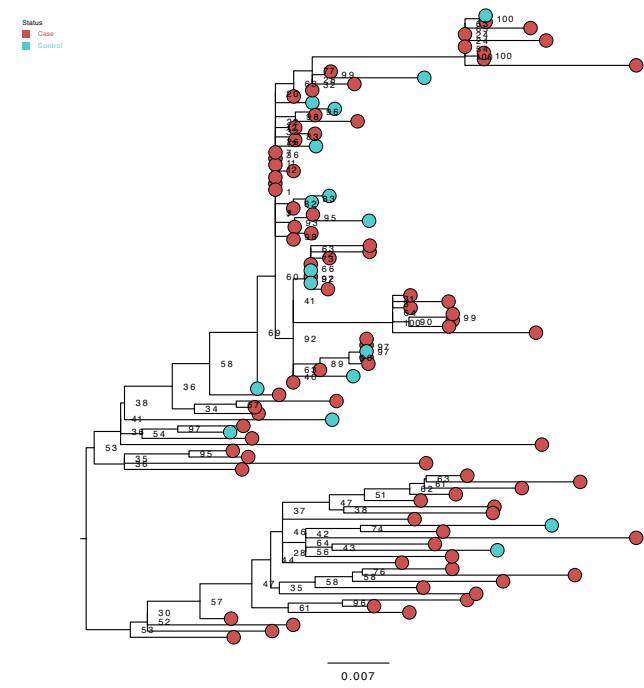


RSV BA

A Stratified by location



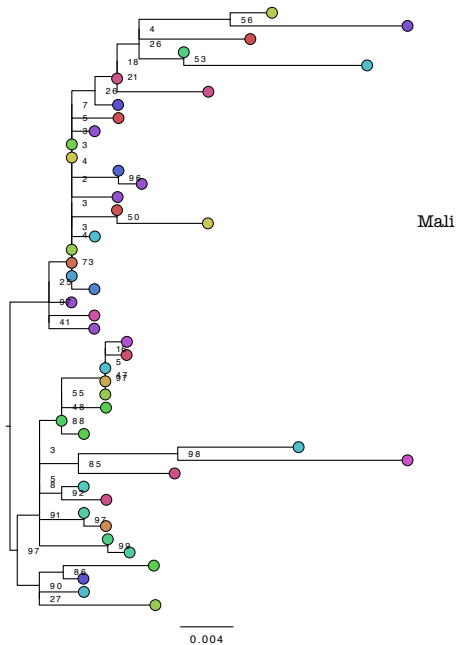
B Stratified by case/control status



RSV GA

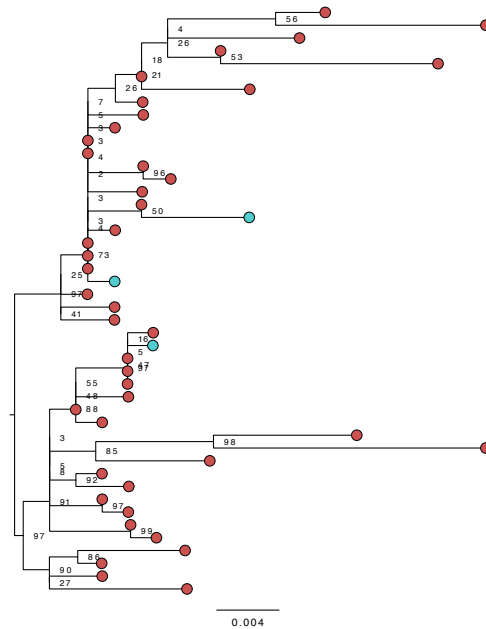
C Stratified by location

- Location
- BACODJICORONI
 - BADALABOUGOU
 - BAGADADJI
 - BAKARIBOUGOU
 - BAMAKO COURA
 - BANANKABOUGOU
 - BANCONI
 - BOULKASSOUMBBOUGOU
 - DAOUDABOUGOU
 - DJELIBOUGOU
 - DJICORONI PARA
 - DOUMANZANA
 - FALADIE
 - HAMDALLAYE
 - KOROFINA NORD
 - KOROFINA SUD
 - KOULOUBA
 - LAFIABOUGOU
 - MAGNAMBBOUGOU
 - NIAMAKORO
 - NIARELA-NGOLONONA
 - POINT G
 - QUIMZAMBOUGOU
 - SEBENCORO
 - SIRAKORO DOUFING



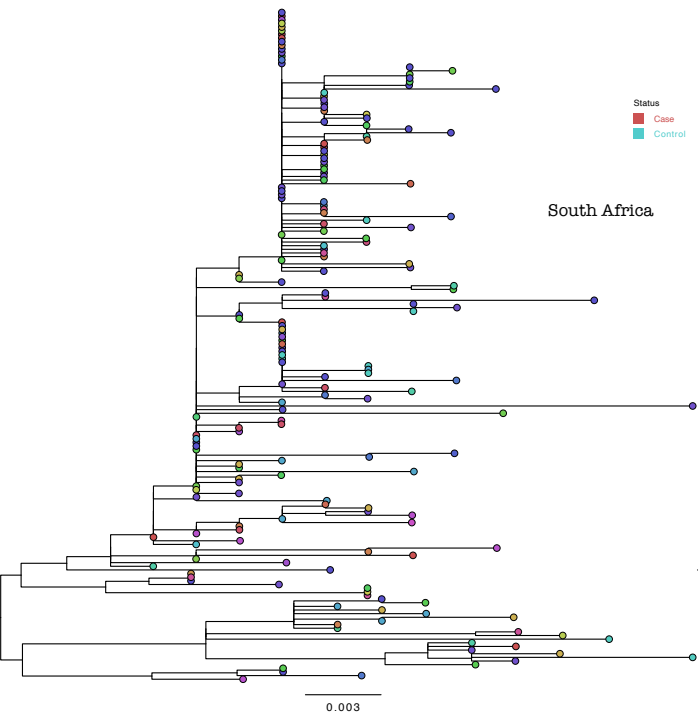
D Stratified by case/control status

- status
- Case
 - Control



- Location
- Bramfisher
 - Chiawelo
 - Diepkloof
 - Diamini
 - Dobsonville
 - Dube
 - Eldorado Park
 - Emdeni
 - Ennerdale
 - Finetown
 - Freedom Park
 - Jabulani
 - Klipspruit
 - Kliptown
 - Lawley
 - Lenasia
 - Mapetia
 - Meadowlands
 - Mofolo
 - Motswaledi
 - Naledi
 - Orange Farm
 - Orlando
 - Phiri
 - Pimville
 - Protea Glen
 - Senoane
 - Soweto
 - Vlaakfontein
 - White City Jabavu
 - Zola

South Africa



- Status
- Case
 - Control

