

# Cancer Spheroids Derived Exosomes Reveal More Molecular Features Relevant to Progressed Cancer

Junfang Tu <sup>a,\*</sup>, Xun Luo <sup>a</sup>, Haitao Liu <sup>a</sup>, Jifeng Zhang <sup>a</sup>, Mei He<sup>a</sup>

<sup>a</sup> *School of Biological Engineering,  
Huainan Normal University  
Huainan, Anhui 232038, China*

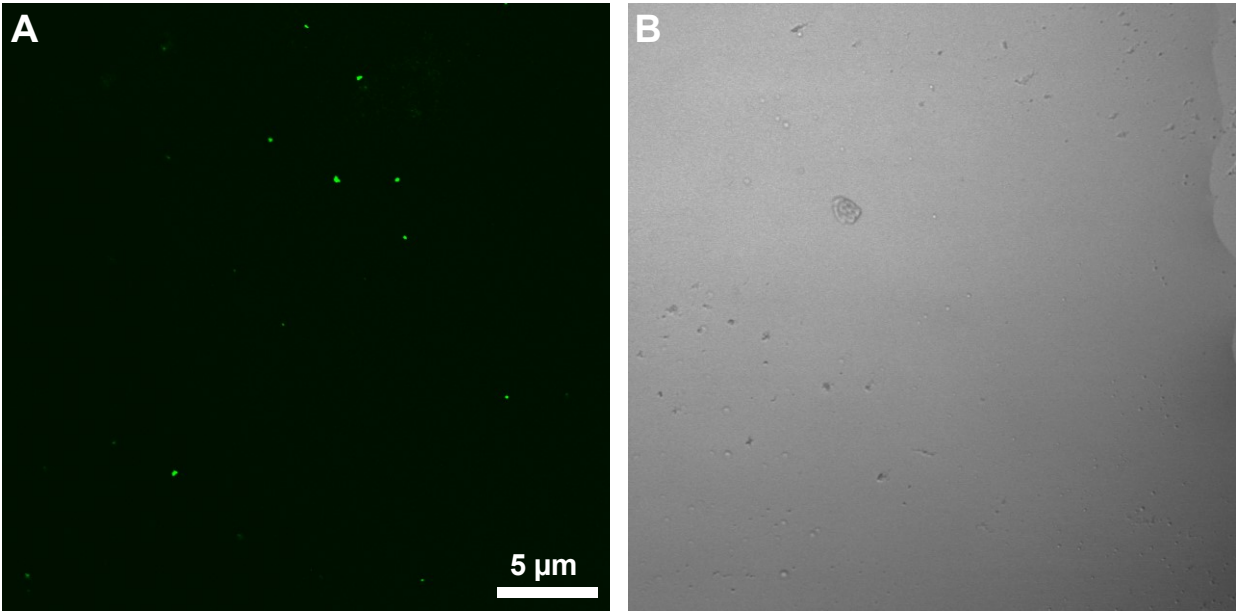
\* Corresponding author. School of Biological Engineering, Huainan Normal University. Huainan, Anhui 232038, China.

E-mail address: [tjf\\_tuzi@163.com](mailto:tjf_tuzi@163.com) (J. Tu).

## Supplementary Information

**Table S1.** Primer sequences used in qPCR.

Gene	Primer sequences
Glypican-1	Forward: 5'-CTTAGTGCTGCTTTGCTTTTCAT-3' Reverse: 5'-AGGGTTATTATGGGGTGGACTT-3'
GAPDH	Forward: 5'-AGGGCTGCTTTTAACTCTGGT-3' Reverse: 5'-CCCCACTTGATTTTGGAGGGA-3'
miR-96-5p	Forward: 5'-TTTGGCACTAGCACATTTTGGCT-3'
miR-1246	Forward: 5'-AATGGATTTTGGAGCAGG-3'
miR-21	Forward: 5'-TAGCTTATCAGACTGATGTTGA-3'
miR-4454	Forward: 5'-GGATCCGAGTCACGGCACCA-3'



**Figure S1.** The labeling of exosomes isolated from PANC-1 3D spheroids. (A) Exosomes were stained with membrane permeable SYTO™ RNASelect™ green fluorescent cell stain (Thermofisher) to fluorescently label the RNA present inside the exosomes. (B) Bright-field image of the same area. Samples were visualized by confocal laser scanning microscopy equipped with a 20x lens (FV3000, Olympus), irradiated by 488 nm. Scale bar: 5 μm.