

Supplemental Information

A hydrophobic ratchet entrenches molecular complexes

Georg K.A. Hochberg (1), Yang Liu (2), Erik G. Marklund (3), Brian P. H. Metzger (1), Arthur Laganowsky (2), Joseph W. Thornton (1,4)*

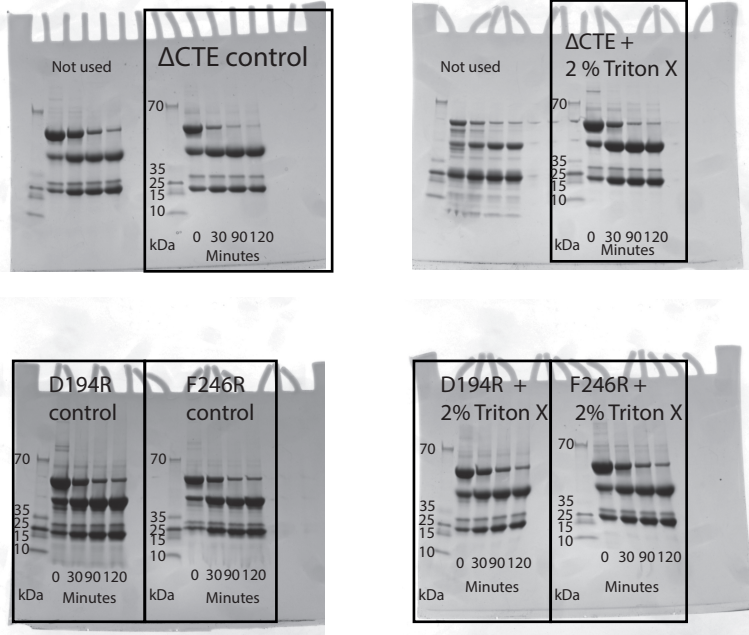
1. Department of Ecology and Evolution, University of Chicago, Chicago USA 60637
2. Department of Chemistry, Texas A&M University, College Station, Texas USA 77843-3255
3. Department of Chemistry – BMC, Uppsala University, Uppsala, Sweden 75123
4. Department of Human Genetics, University of Chicago, Chicago USA 60637

* Editorial correspondence: Joseph Thornton, joet1@uchicago.edu, 1-773-834-3423

Supplemental Data: 1 Raw gel images. Uncropped gels for data presented in Extended Data Figure 4b. Boxes are drawn around lanes that were used in for the figure.

Supplemental Data: 2 Scaled Q matrices based on mutation accumulation experiments. Row indicates the initial state, column the mutated state. **a**, *M. musculus*. **b**, *S. cerevisiae*. **c**, *E. coli*. **d**, *P. aeruginosa*.

Supplemental Data 1



Supplemental Data 2

a

<i>M.musculus</i>	A	T	G	C
A	-0.1435687	0.04495586	0.07105926	0.02755359
T	0.04495586	-0.1435687	0.02755359	0.07105926
G	0.24033653	0.07128626	-0.35643129	0.04480851
C	0.07128626	0.24033653	0.04480851	-0.35643129

b

<i>S.cerevisiae</i>	A	T	G	C
A	-0.15834166	0.03146853	0.07192807	0.05494505
T	0.03146853	-0.15834166	0.05494505	0.07192807
G	0.17482517	0.09090909	-0.34165834	0.07592408
C	0.09090909	0.17482517	0.07592408	-0.34165834

c

<i>E.coli</i>	A	T	G	C
A	-0.22222222	0.03535354	0.10606061	0.08080808
T	0.03535354	-0.22222222	0.08080808	0.10606061
G	0.17676768	0.06565657	-0.27777778	0.03535354
C	0.06565657	0.17676768	0.03535354	-0.27777778

d

<i>P.aeruginosa</i>	A	T	G	C
A	-0.13613614	0.02252252	0.06806807	0.04554555
T	0.02252252	-0.13613614	0.04554555	0.06806807
G	0.26176176	0.07957958	-0.36386386	0.02252252
C	0.07957958	0.26176176	0.02252252	-0.36386386