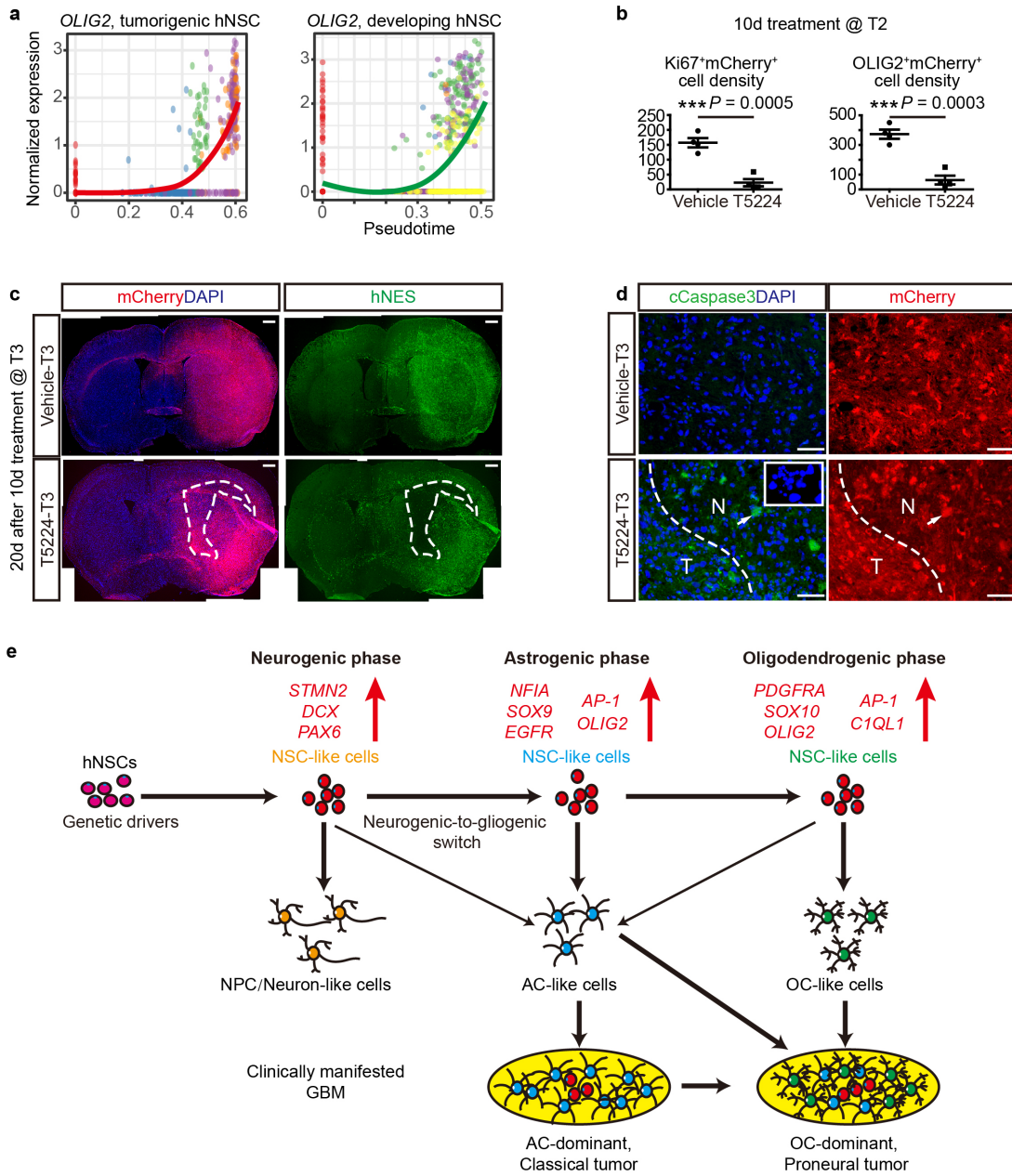


Supplementary information, Fig. S9



Supplementary information, Fig. S9. AP-1 inhibition at a later stage exhibited partial tumor inhibition.

(a) Trajectory plots of *OLIG2* in tumorigenic TNP hNSCs (top) and developing embryonic hNSCs (bottom).

(b) The number of Ki67⁺mCherry⁺, and OLIG2⁺mCherry⁺ cells per high-power field in the central tumor areas of TNP mice treated with vehicle or T5224 at T2 for 10 days. n=4 for each group, *P* values from Student's t-test.

(c) Low magnification view of mCherry⁺DAPI⁺ cells and hNES⁺ cells in brain sections of TNP mice 20 days after the 10-day treatment with vehicle or T5224 at T3. Dashed lines, the overt necrotic region inside the tumor. Scale bars, 1mm.

(d) IF for cCaspas3/DAPI and mCherry in brain sections of TNP mice 20 days after the 10-day treatment with vehicle or T5224 at T3. Dashed lines, a rough boundary between the necrotic region and the remaining tumor region. Inset, apoptotic nucleus. N, necrotic region. T, tumor region. Scale bars, 50μm.

(e) A proposed model summarizing the tumorigenic trajectory from mutant hNSCs to clinically manifested GBM. Genes in red represent signature genes in NSC-like cells at each phase.