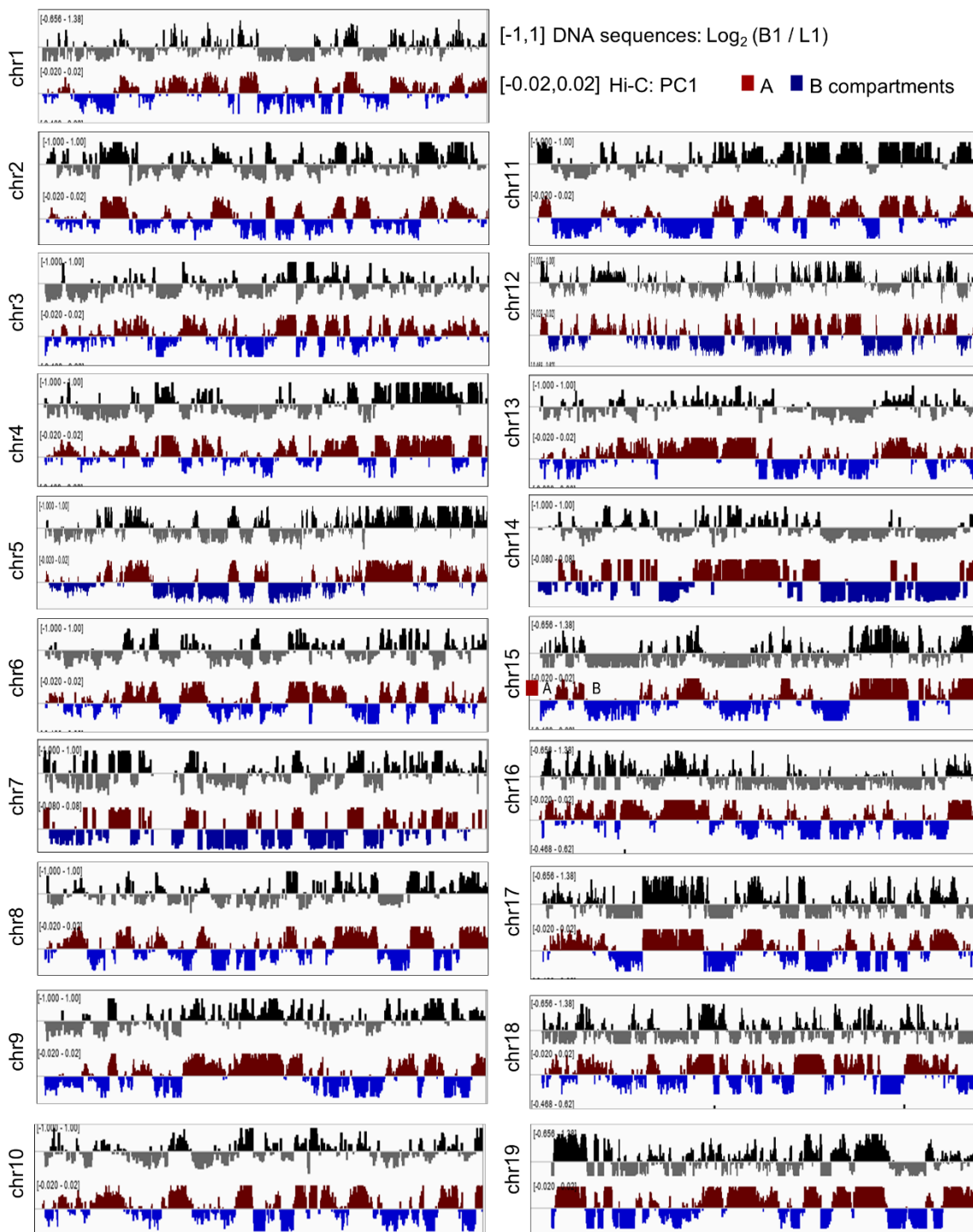


Fig. S3

*De novo* compartment calling based on L1 and B1 DNA sequences



**Fig. S3 *De novo* compartment calling based on L1 and B1 DNA sequences.**

All mouse chromosomes showing the ratio of B1 to L1 density in  $\log_2$  scale [ $\log_2 (B1 / L1)$ ] (upper) and the PC1 score of Hi-C interaction matrix (lower) at 20-kb resolution.