

Figure S6

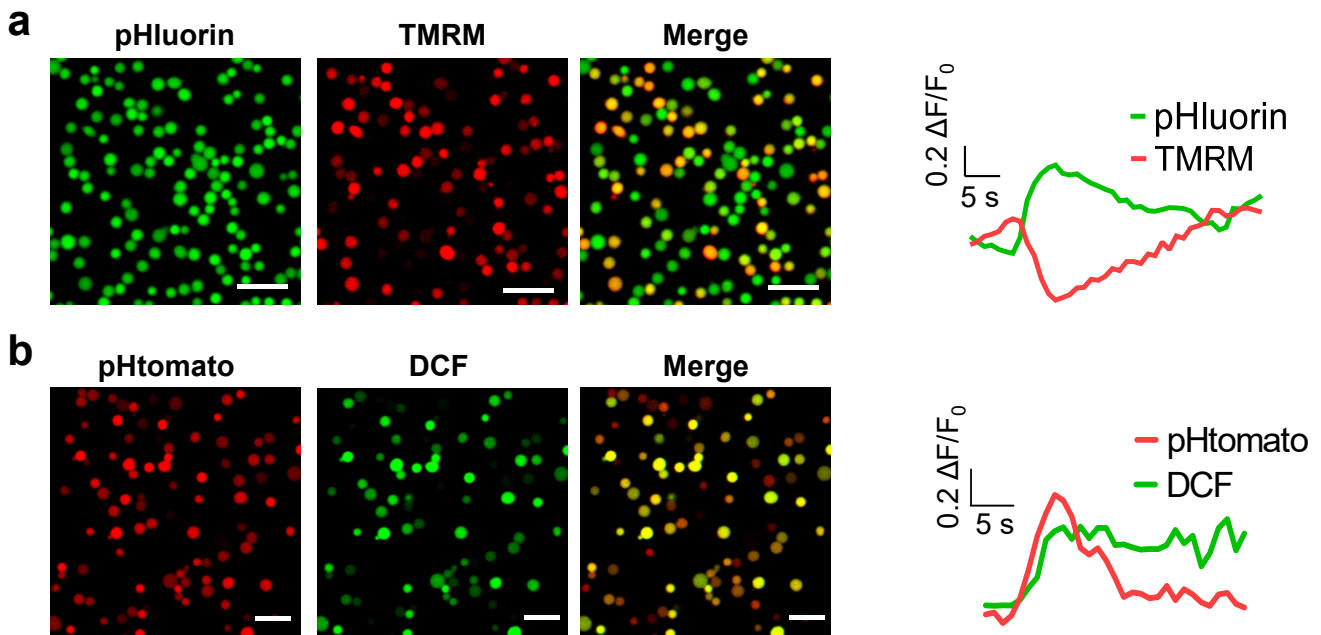


Figure S6. Concurrent membrane depolarization, ROS bursts, and pH_i transients in BacFlashes detected in *E.coli* spheroplasts .

(a) Left: simultaneous confocal imaging of pHluorin and TMRM fluorescence signals in spheroplasts. Scale bars: 10 μm . Note that most of the spheroplasts (80%) were successfully stained with TMRM.

Right: representative traces of TMRM-reported membrane depolarization and pHluorin-reported pH_i alkalization.

(b) Left: simultaneous confocal imaging of pHtomato and DCF fluorescence signals in spheroplasts. Scale bars: 10 μm . Note that a major part of the spheroplast (65%) were successfully stained with DCF.

Right: representative traces of pHtomato-reported pH_i alkalization and DCF-reported ROS burst.