

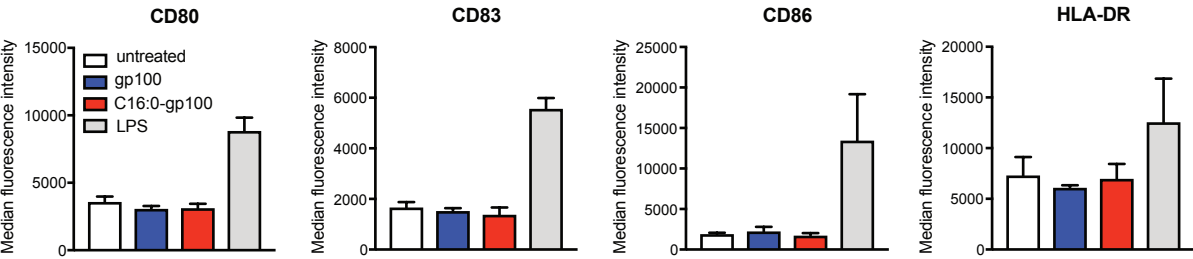
**Supplemental information**

**Palmitoylated antigens for the  
induction of anti-tumor CD8<sup>+</sup> T cells  
and enhanced tumor recognition**

**Dorian A. Stolk, Sophie K. Horrevorts, Sjoerd T.T. Schetters, Laura J.W. Kruijssen, Sanne Duinkerken, Eelco Keuning, Martino Ambrosini, Hakan Kalay, Rieneke van de Ven, Juan J. Garcia-Vallejo, Tanja D. de Gruijl, Sandra J. van Vliet, and Yvette van Kooyk**

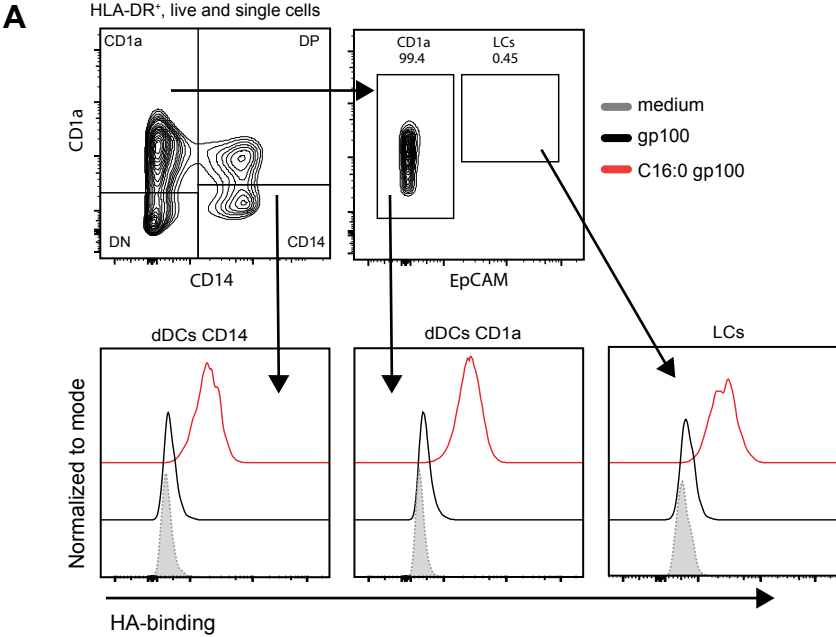
# Supplementary Figure 1

A



**Figure S1.** C16:0 peptide does not induce DC maturation (A) human moDC were incubated with unmodified peptide, C16:0 peptide, medium or LPS for 3hrs. Cells were washed and cultured o/n and stained for different maturation markers.

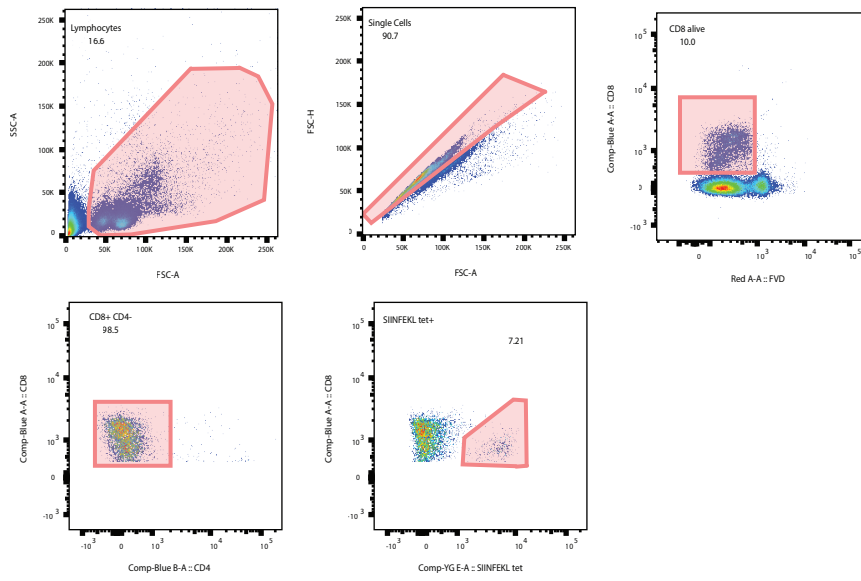
# Supplementary Figure 2



**Figure S2.** HA-tag detection in human skin crawl out dDCs. (A) Ex vivo human skin was intra-dermally injected with 30  $\mu$ M unmodified gp100 or C16:0- p100 peptide in serum free medium. Punch biopsies were taken at the site of injection and cultured for 2 days. The crawl out cells were collected and stained for HLA-DR, CD1a, CD14, EpCAM and the HA-tag. Figure is representative for multiple individual experiments.

# Supplementary Figure 3

A



**Figure S3.** Gating strategy SIINFEKL+ CD8+ T-cells (A) Mouse blood or spleen was processed and stained with an antibody mxi containing CD8, CD4, Fixable Viability Dye (FVD), SIINFEKL tetramer.