

Supplemental Information

Topoisomerase II-Induced Chromosome Breakage and Translocation Is Determined by Chromosome Architecture and Transcriptional Activity

Andres Canela, Yaakov Maman, Shar-yin N. Huang, Gordana Wutz, Wen Tang, Guido Zagnoli-Vieira, Elsa Callen, Nancy Wong, Amanda Day, Jan-Michael Peters, Keith W. Caldecott, Yves Pommier, and André Nussenzweig

Fig. S1

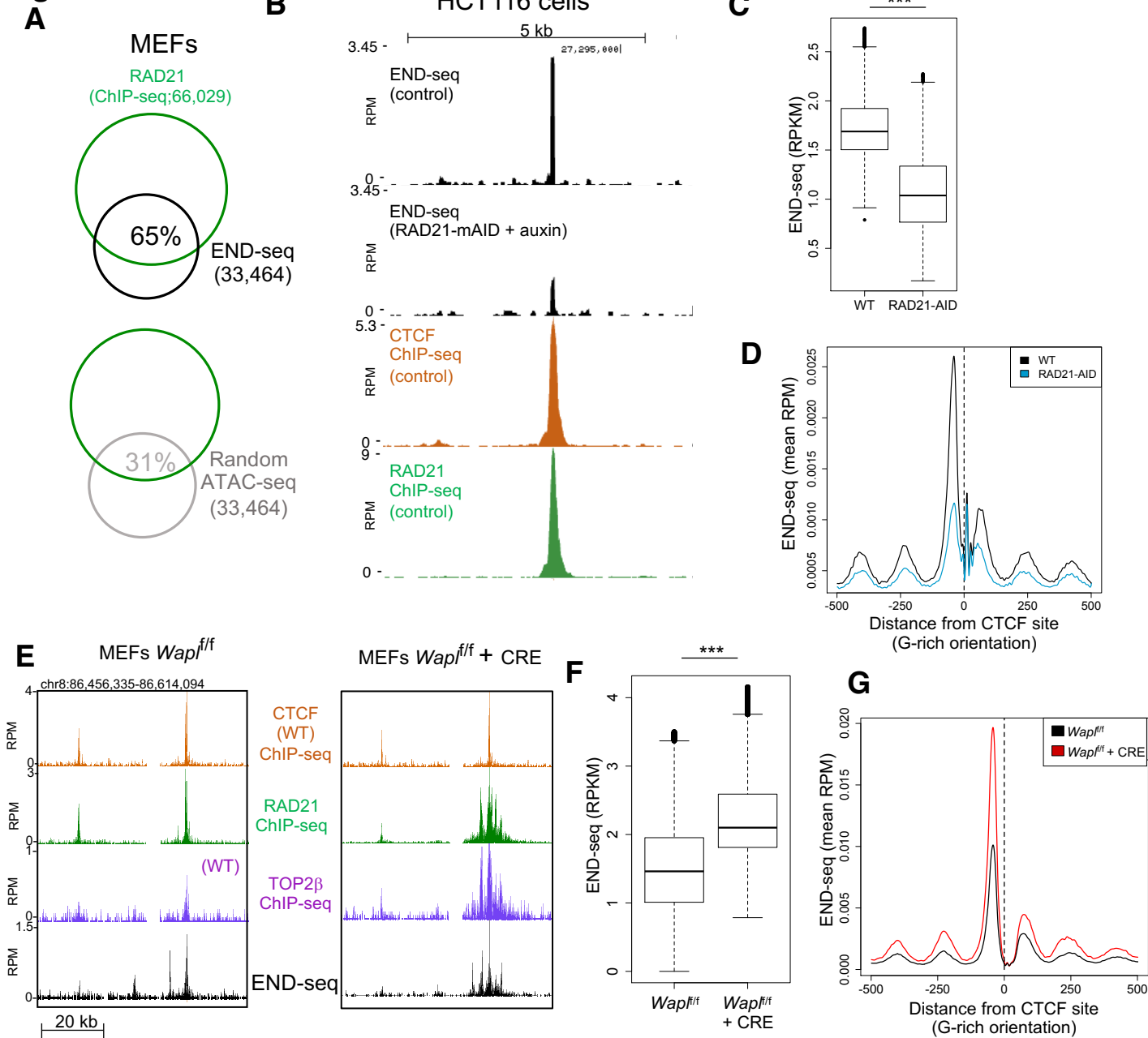


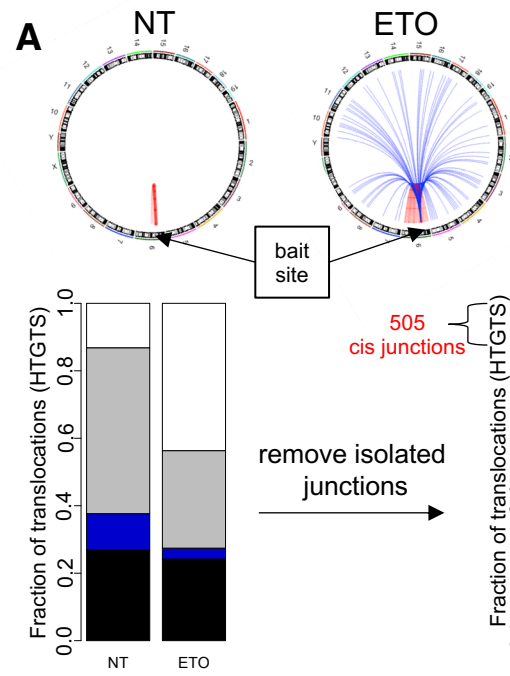
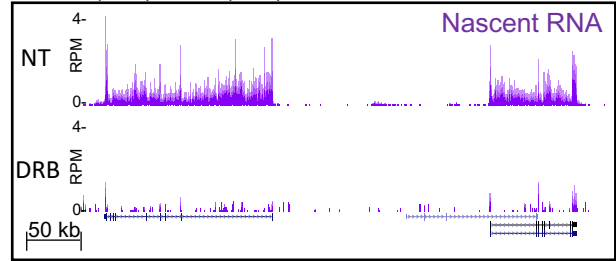
Fig.S2**Translocations (HTGTS)****B** chr9:32,369,685-32,841,681

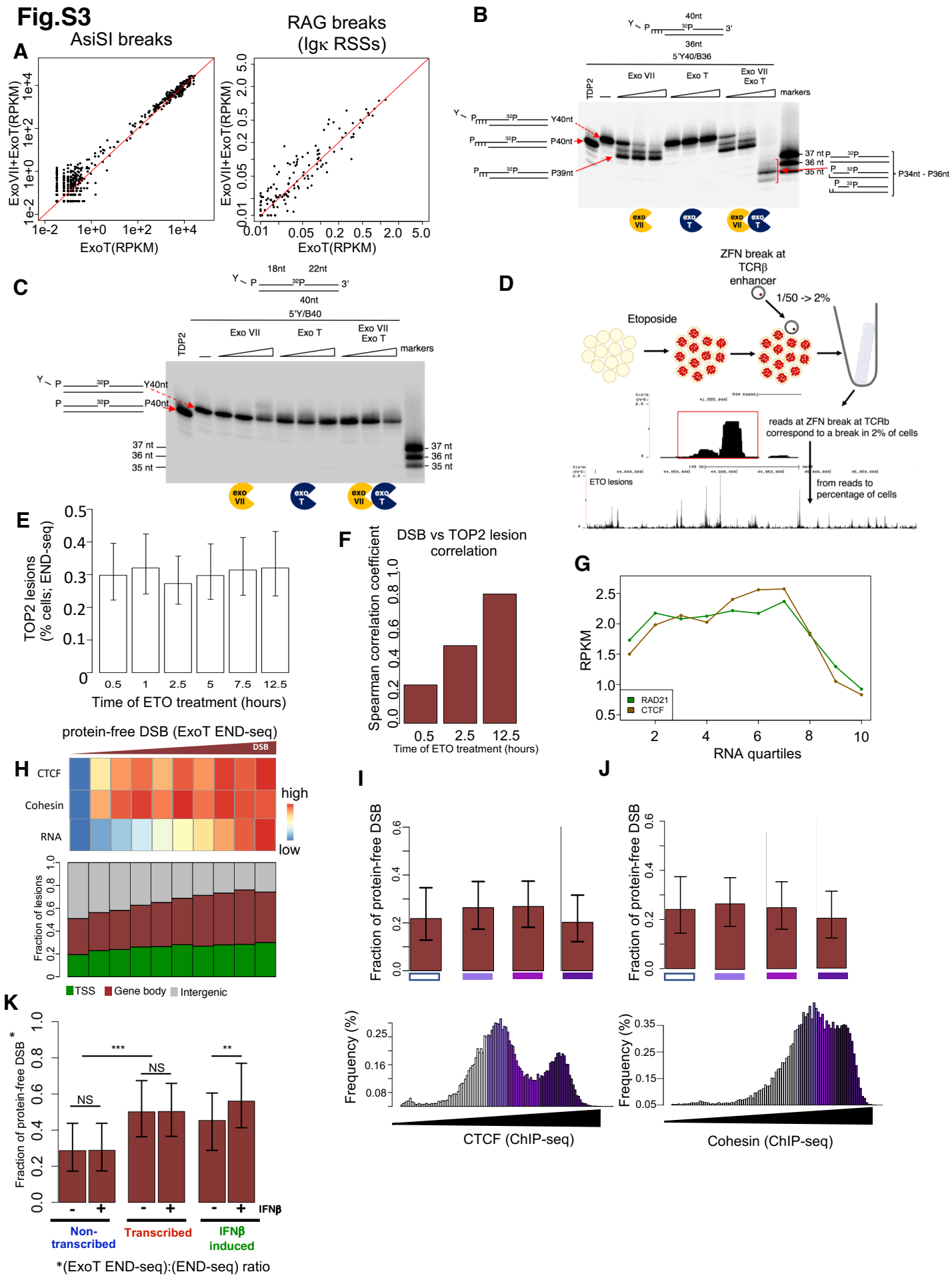
Fig.S3

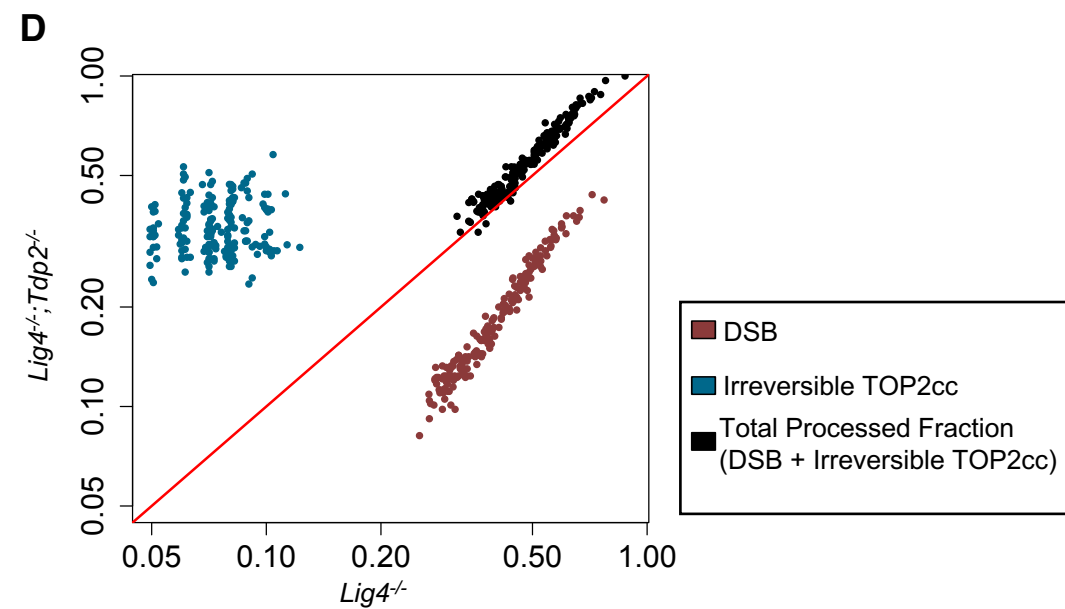
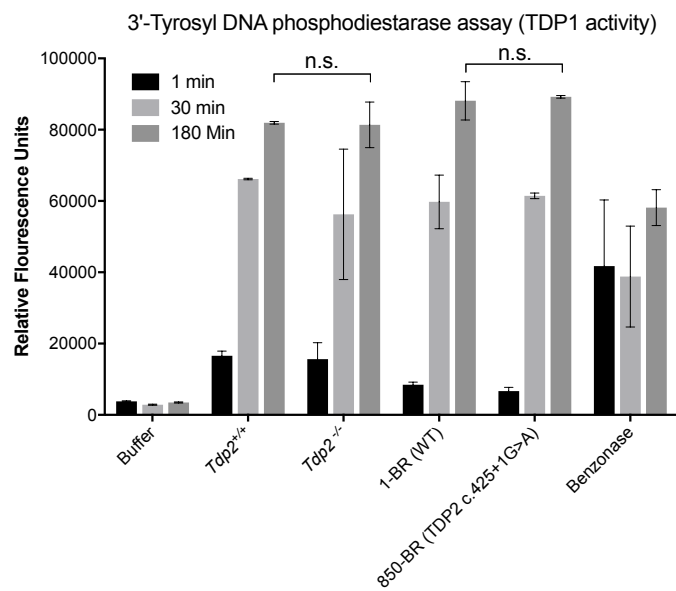
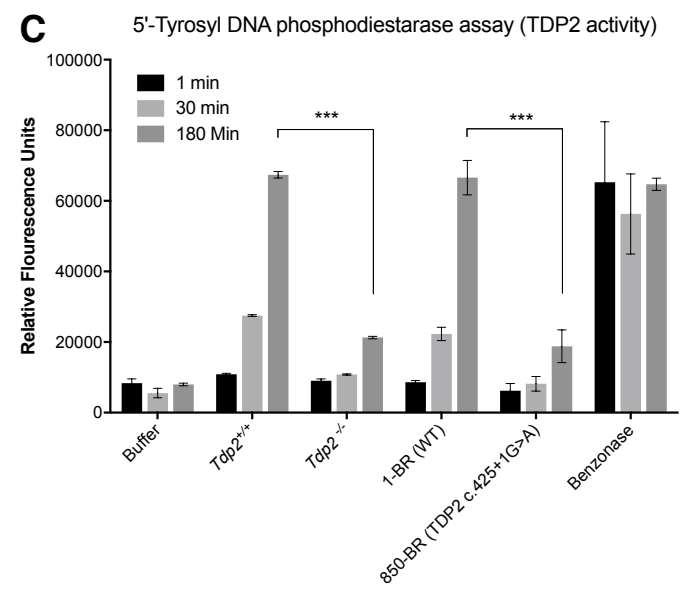
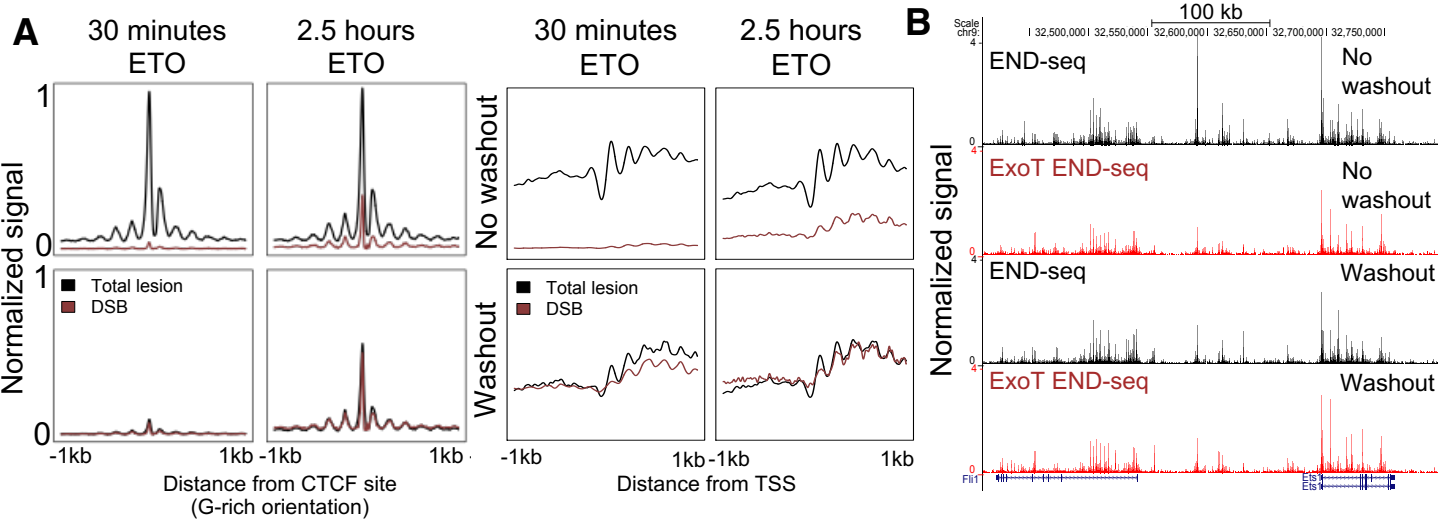
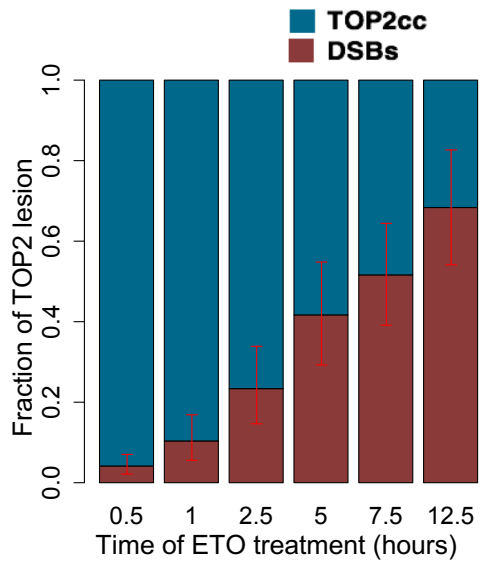
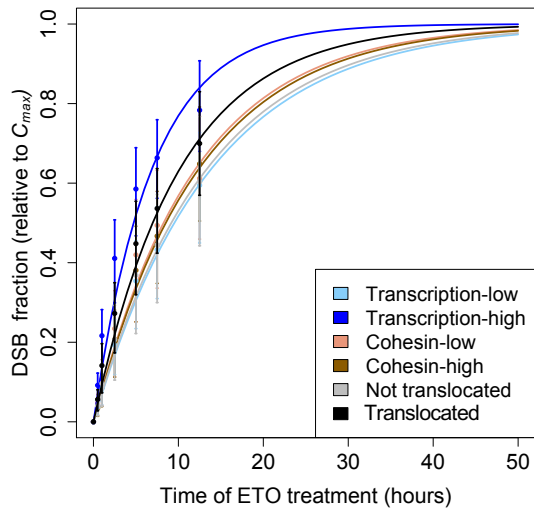
Fig.S4

Figure S5

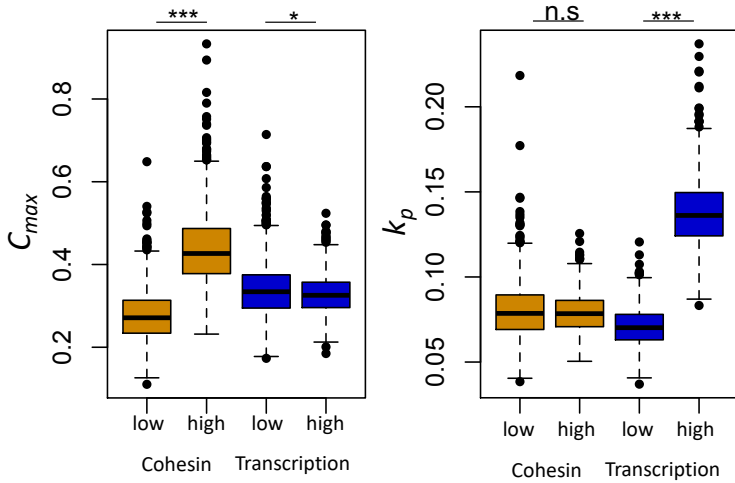
A



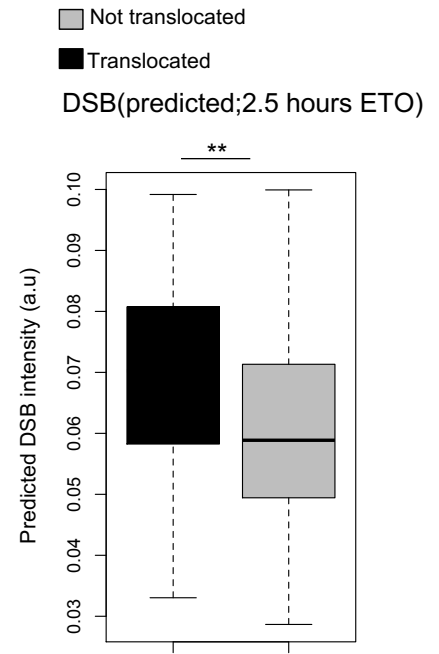
B



C



D



E

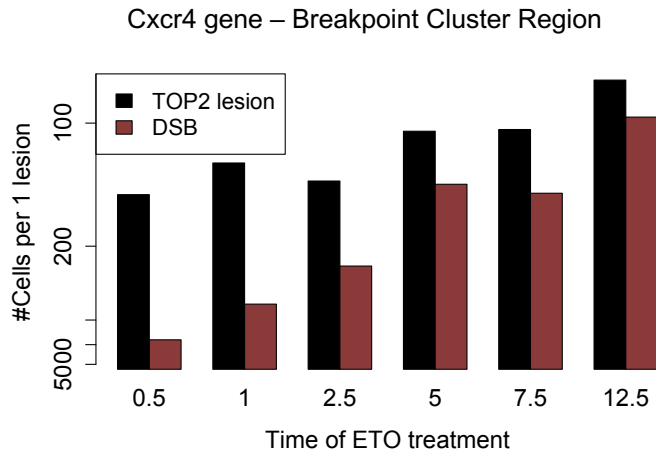
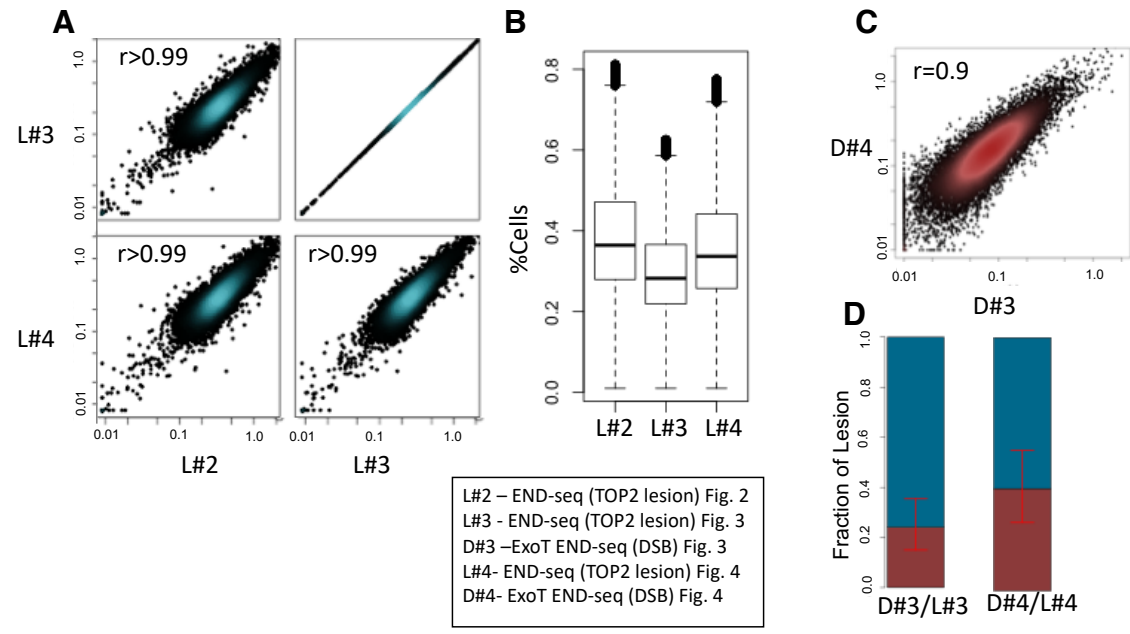


Figure S6



L#2 – END-seq (TOP2 lesion) Fig. 2
 L#3 - END-seq (TOP2 lesion) Fig. 3
 D#3 –ExoT END-seq (DSB) Fig. 3
 L#4- END-seq (TOP2 lesion) Fig. 4
 D#4- ExoT END-seq (DSB) Fig. 4

Fraction of Lesion

D#3

D#3/L#3 D#4/L#4