

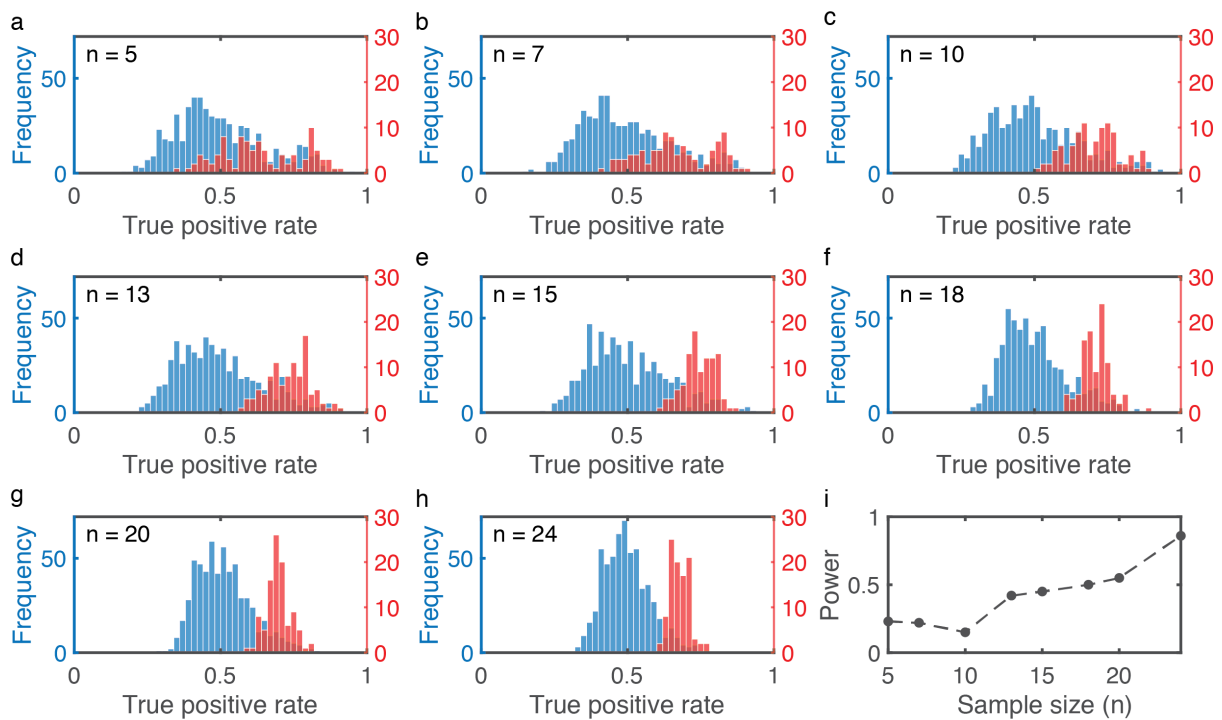
Supplementary Materials for:

Proof of Concept for Real-Time Detection of SARS CoV-2 Infection with an Electronic Nose

Kobi Snitz¹, Michal Andelman-Gur¹, Liron Pinchover¹, Reut Weissgross¹, Aharon Weissbrod¹,
Eva Mishor¹, Roni Zoller¹, Vera Linetsky¹, Abebe Medhanie¹, Sagit Shushan^{1,2}, Eli Jaffe³,
Noam Sobel¹

¹Department of Neurobiology and Azrieli Center for Human Brain Imaging and Research, Weizmann Institute of Science, Rehovot, Israel. ²Department of Otolaryngology & Head and Neck Surgery, Edith Wolfson Medical Center, Holon, Israel. ³Magen David Adom in Israel and Department of Emergency Medicine, Ben-Gurion University of the Negev, Beer Sheva, Israel.

In addition to this document, the supplementary materials include an online video and a zipped directory including all the data and code



Supplementary Figure 1: Power at different sample sizes

To calculate the power of our experiment with 27 positive participants we performed the 600-fold bootstrap described in the text for assigning a p value, but now using samples of different size. Thus, the power of the experiment at 5 positive samples was the proportion of selections of 5 positive samples which resulted in significant classifier performance. And so on for 7,10,13, and so on.

Supplementary Video Online

A video demonstrating activity at the drive-through. The person being tested is an experimenter demonstrating, and not a participant.

Supplementary Materials Data and Code folder

A folder containing all the raw data, the code, and a readme file explaining how to run it.