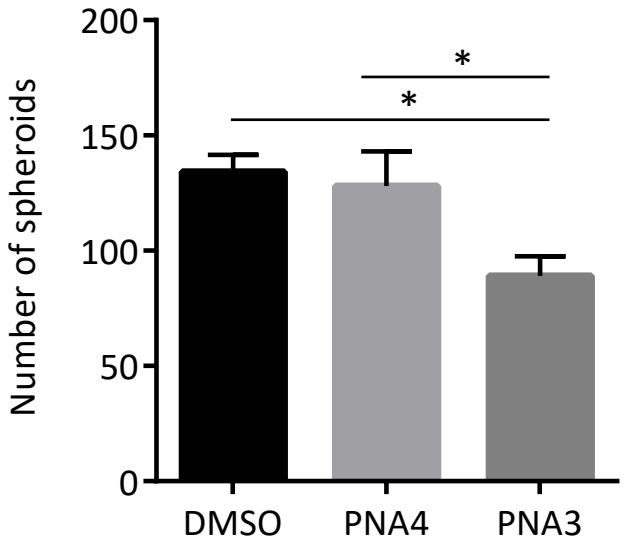


Supplemental Figure S1. Validation of ectopic HOTAIR overexpression:

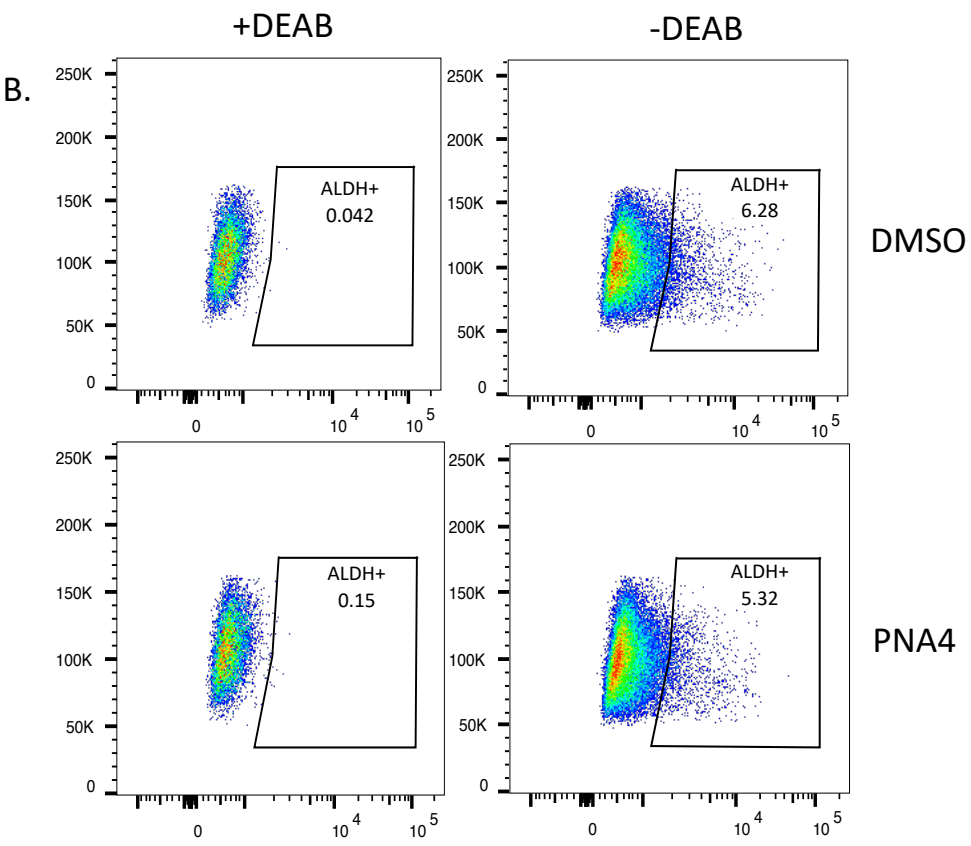
A) Relative gene expression of HOTAIR in the overexpressed and empty vector control cells was validated by qPCR. **B)** HOTAIR regulated gene expression was determined by immunoblot in HOTAIR overexpressed and control cells. GAPDH was used as the loading control. Error bars represent SEM; $n = 3$ independent experiments of triplicate assays. Data are presented as mean \pm SEM with $p < 0.05$ (*), $p < 0.01$ (**), and $p < 0.005$ (***)).

Supplemental Fig. S2

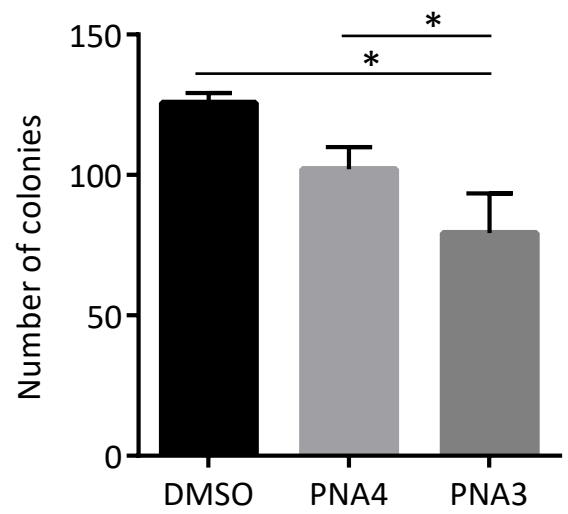
A.



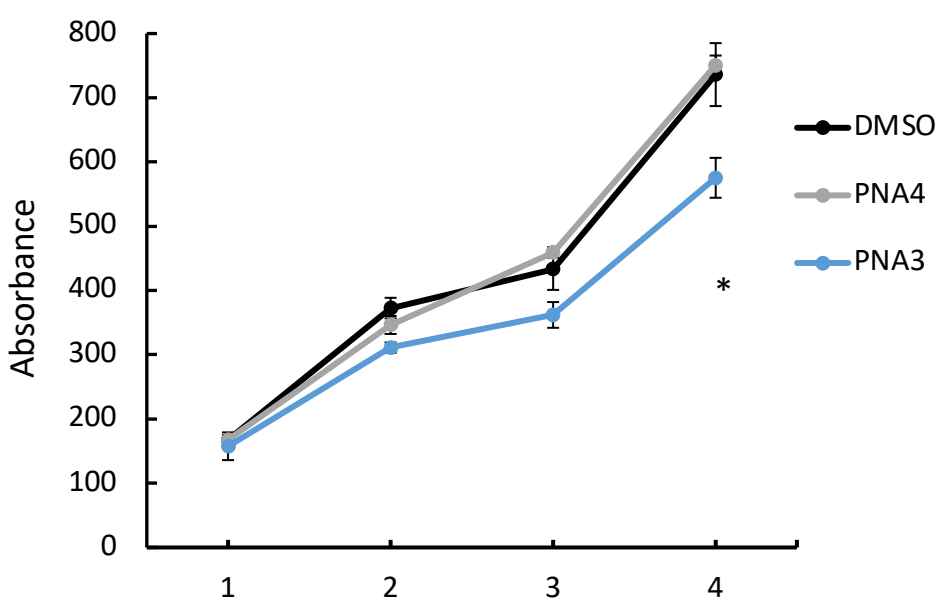
B.



C.

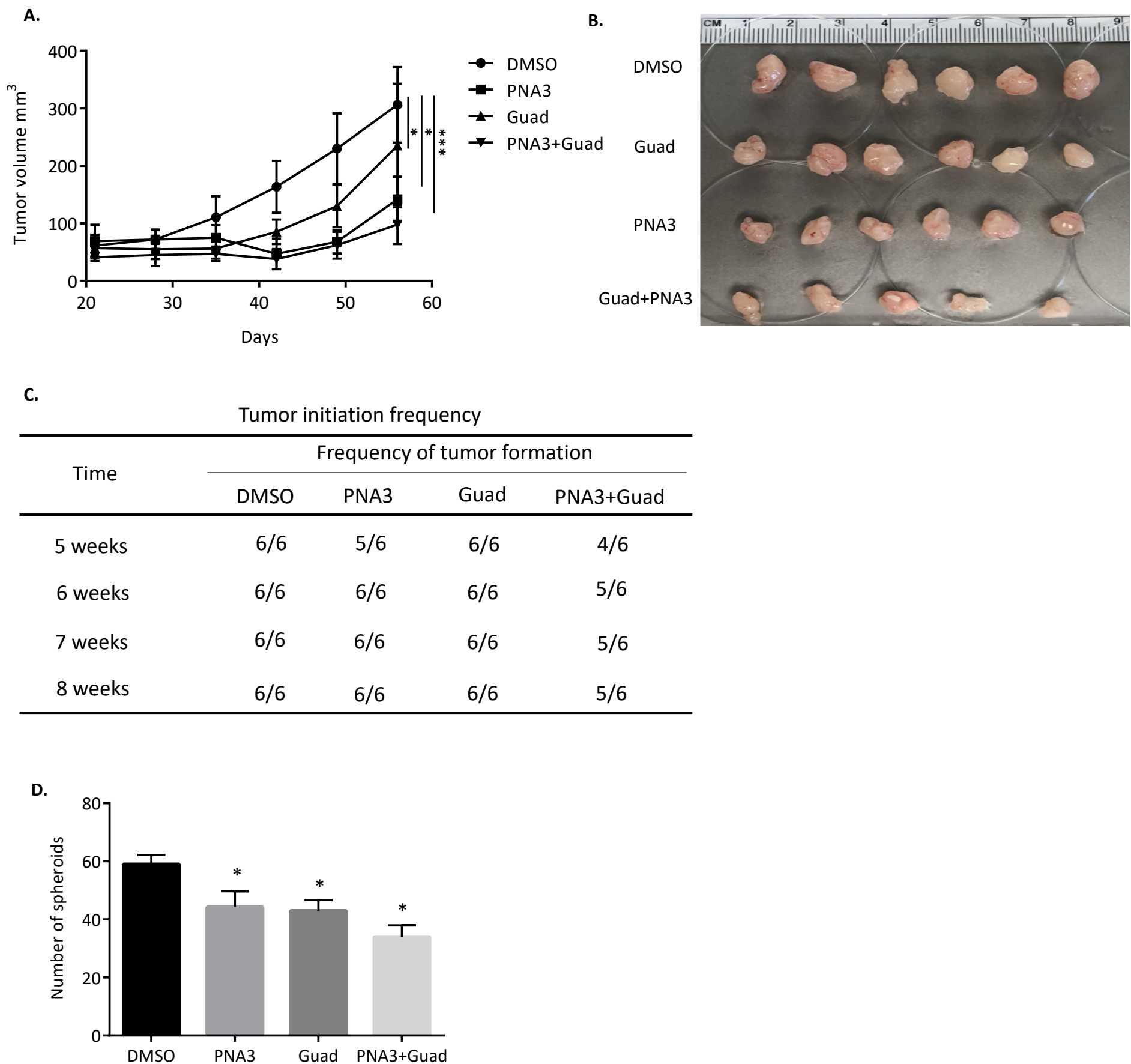


D.



Supplemental Figure S2. PNA4 treatment has no effect on functional characteristics of OC cells *in vitro*. **A)** Quantification of spheroid treated with PNA4 compared with DMSO. **B)** Representative images and quantification of clonogenic survival assay after PNA3 treatment compared to PNA4. **C)** ALDH (+) population were determined by ALDEFLUOR assay using flow cytometry in DMSO compared to PNA4. **D)** Cell proliferation determined by MTT assay, PNA4 versus DMSO.

Supplemental Fig. S3



Supplemental Figure S3. Effect of inhibiting HOTAIR and DNA methylation on ovarian tumors initiated with 50,000 OVCAR3 cells. A) Xenograft tumor growth curve of different treatment groups. OVCAR3 sorted ALDH⁺ cells were treated with guadecitabine alone or with PNA3 treatment. 50,000 ALDH⁺ cells were injected s.c. into mice. **B)** Images of tumors collected at end of study. **C)** Quantification of tumor formation. **D)** Quantification of spheroid formation by tumor cells collected from mice at end of study. Data are presented as mean \pm SEM with $p < 0.05$ (*) and $p < 0.005$ (***)).