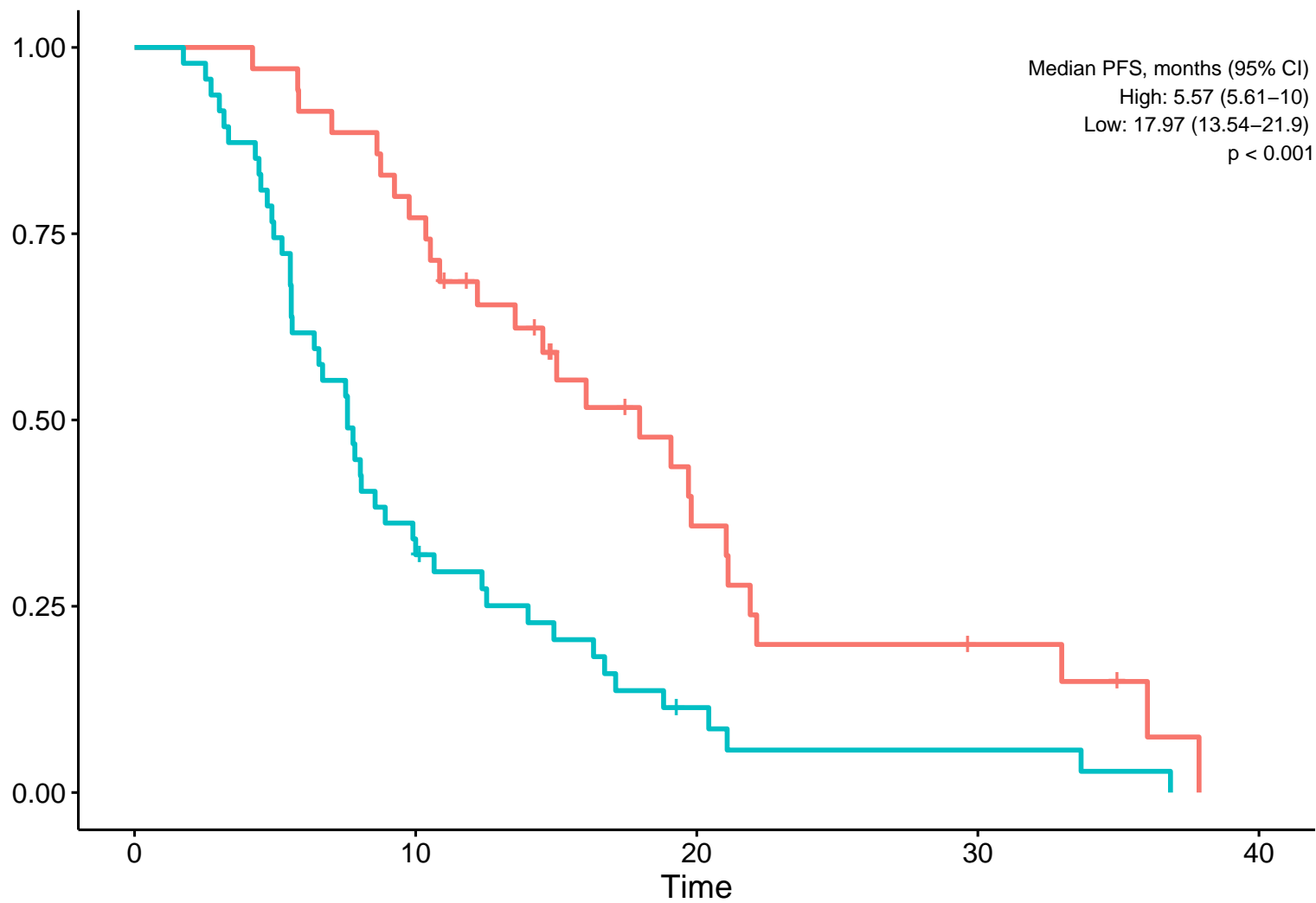


**A**Strata + IL6=low + IL6=high

Progression-free survival probability



Number at risk

Strata

IL6=low

35

27

9

4

0

IL6=high

47

16

4

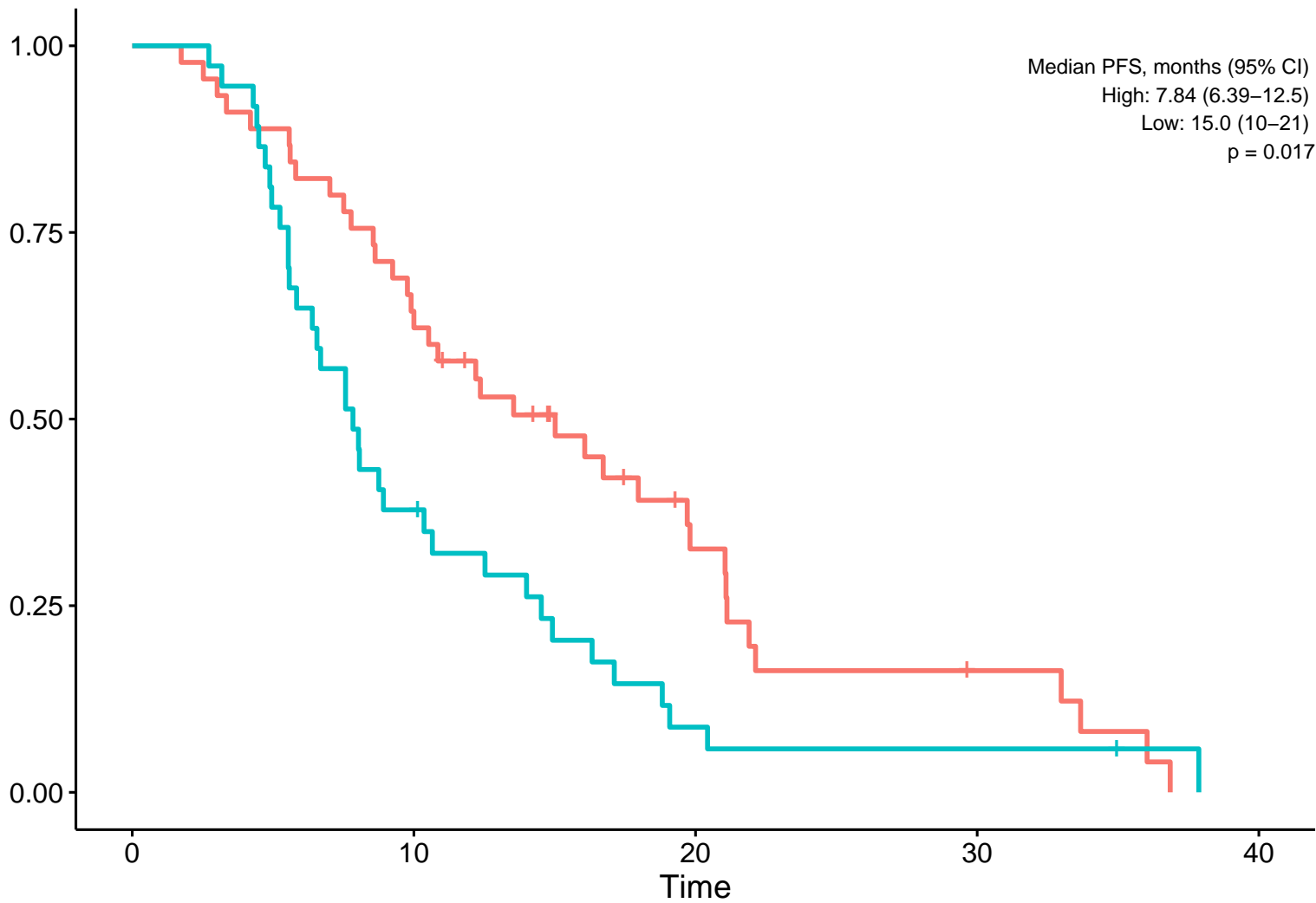
2

0

Time

**B**Strata + IL8=low + IL8=high

Progression-free survival probability



Number at risk

Strata

IL8=low  
IL8=high

Time (months)	IL8=low	IL8=high
0	45	37
10	29	14
20	10	3
30	4	2
40	0	0