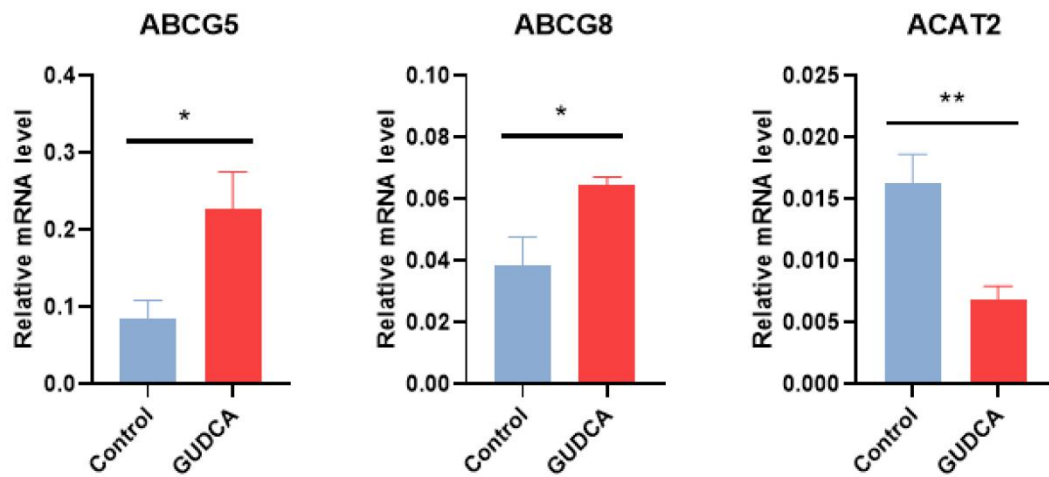


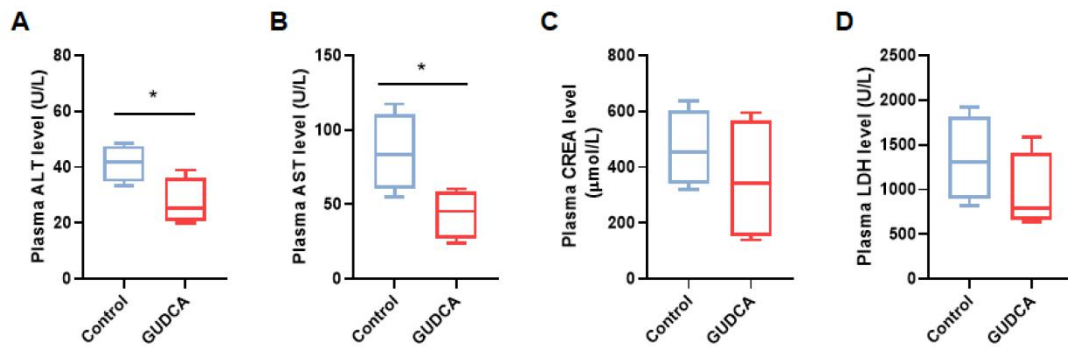
SUPPLEMENTAL MATERIAL

Figure S1. Gene expressions related to intestinal cholesterol excretion.



Relative mRNA levels of ABCG5, ABCG8 and ACAT2 in the ileum of mice. GAPDH mRNA was used as internal control. n= 3 mice per groups. Data are representative of two independent experiments and shown as mean \pm standard error of mean (SEM). Statistical analyses were performed with unpaired two-tailed Student's *t*-test with or without Welch correction, depending on the distribution of these data. * P <0.05, ** P <0.01 and *** P <0.001 versus Control. ABCG5, ATP-binding cassette transporter G5; ABCG8, ATP-binding cassette transporter G8; ACAT2, Acyl-CoA cholesteryl acyl transferases 2

Figure S2. Plasma biochemical indexes.



The levels of (A) alanine aminotransferase (ALT), (B) aspartate aminotransferase (AST), (C) creatinine (CREA) and (D) lactate dehydrogenase (LDH) in plasma. $n = 4$ mice per groups. Data are represented as box plots, where the boxes indicate the median and the interquartile ranges and the whiskers show as the minimum and maximum values. Statistical analyses were performed with unpaired two-tailed Student's *t*-test with or without Welch correction, depending on the distribution of these data. * $P < 0.05$, ** $P < 0.01$ and *** $P < 0.001$ versus Control.