

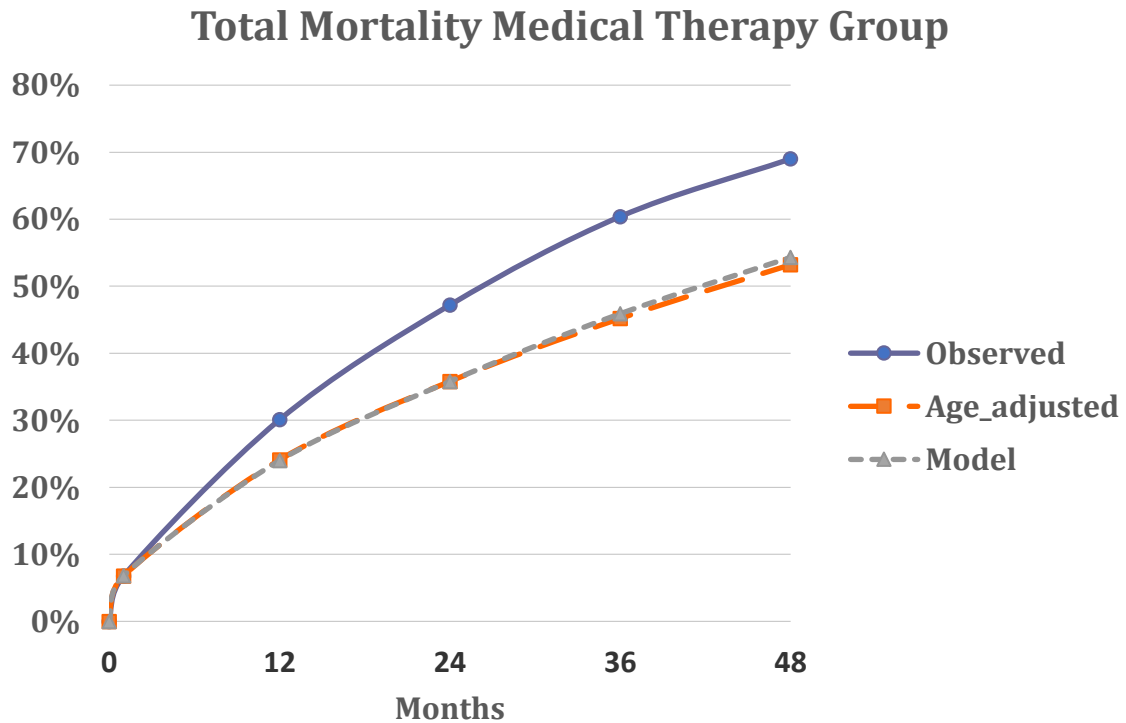
Supplemental Material

Table S1. Observed (unadjusted) event rates through one year.

	0-30 Days			31 Days – 1 Year		
	Medical Rx (n=8,362)	CABG (n=1,330)	PCI (n=4,608)	Medical Rx (n=7,638)	CABG (n=1,239)	PCI (n=4,113)
Mortality	6.7%	5.9%	9.2%	27.7%	11.0%	13.7%
Stroke	0.7%	1.0%	0.7%	2.7%	1.9%	1.9%
ESRD	1.6%	4.0%	2.9%	2.2%	5.1%	2.4%
AMI	2.8%	2.3%	3.3%	10.6%	4.4%	8.1%
PCI	0.2%	--	4.0%	1.7%	2.7%	9.2%
CABG	--	--	0.4%	0.1%	--	1.7%

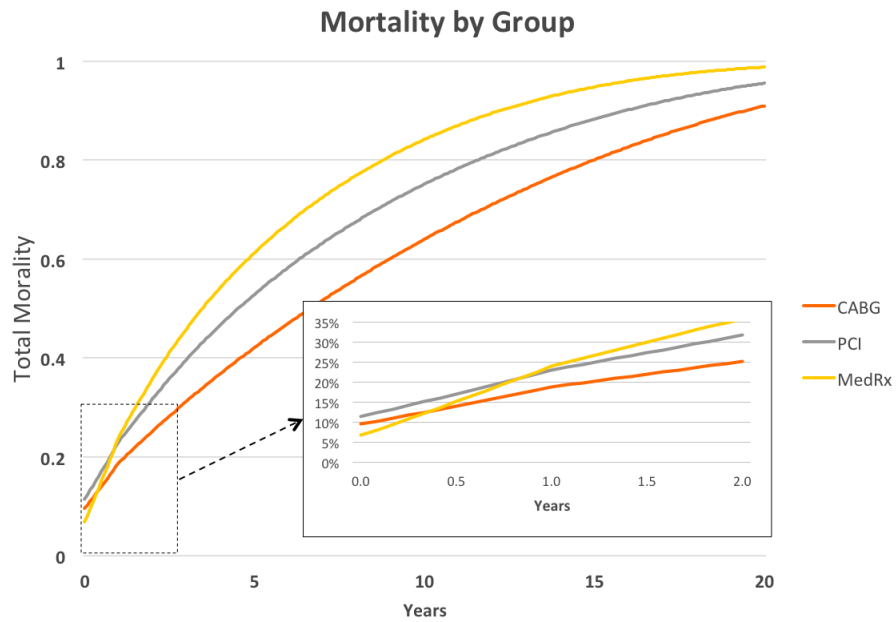
CABG=coronary artery bypass graft surgery; PCI = percutaneous coronary intervention;
ESRD = end-stage renal disease; AMI = acute myocardial infarction

Figure S1. Medical therapy group mortality.



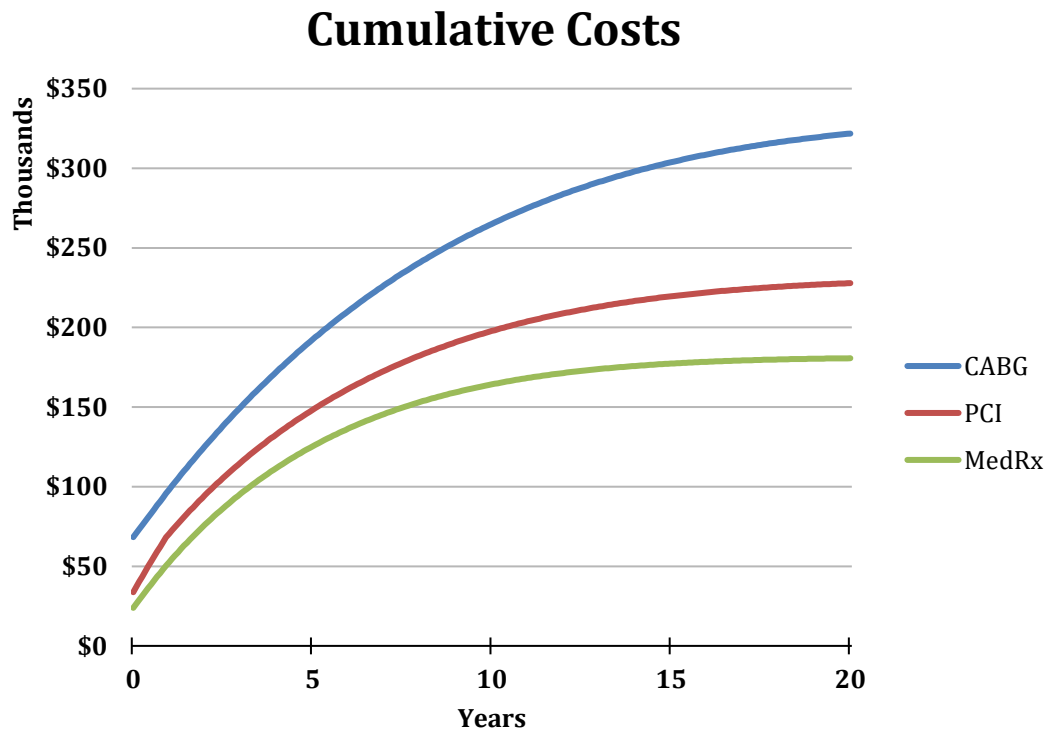
Observed, age-adjusted and modeled total mortality are plotted from baseline through 48 months. The observed results (blue line with closed circles) were first age-adjusted to an assumed starting age of 75 (from 80). The model was then calibrated to match the age-adjusted values. See text for details.

Figure S2. Model-predicted mortality by treatment group.



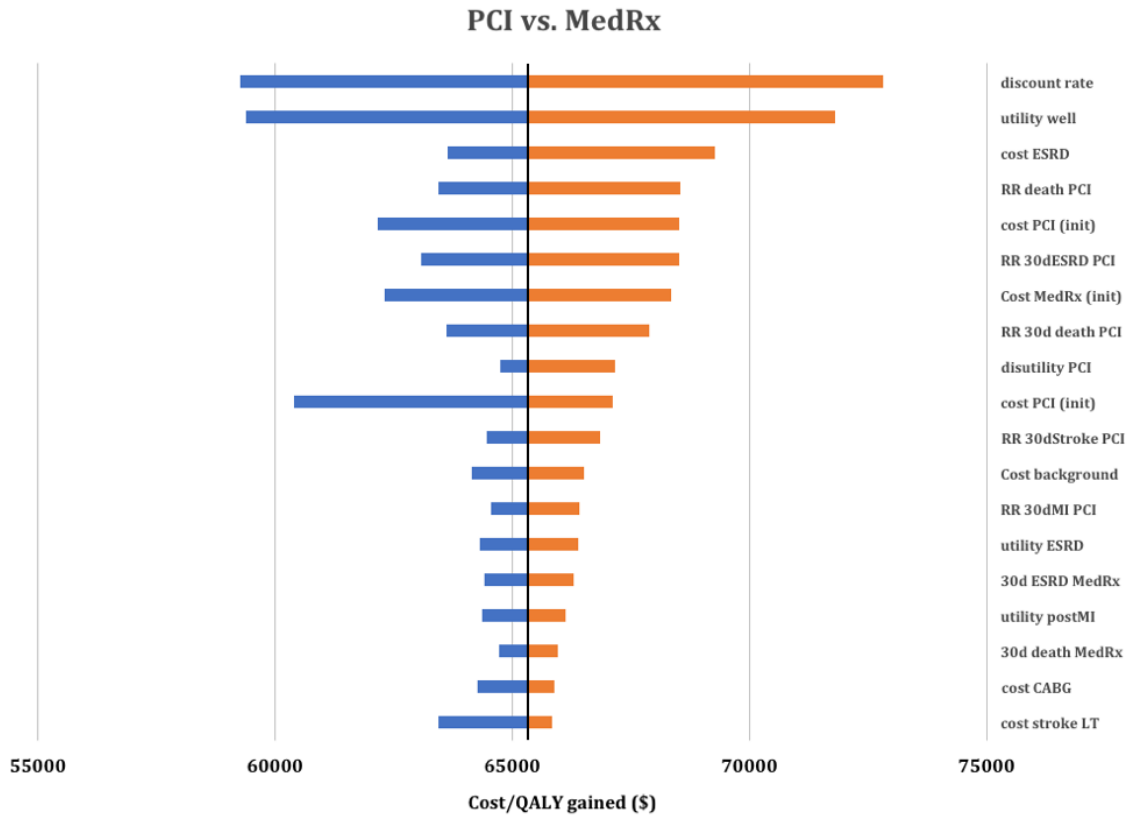
The curves begin after the initial 30-day treatment period (the initial stage of the Markov model). From one year onward mortality was highest in the medical therapy group and lowest in the CABG group. Inlay shows detail for the first 2 years.

Figure S3. Cumulative costs by treatment group.



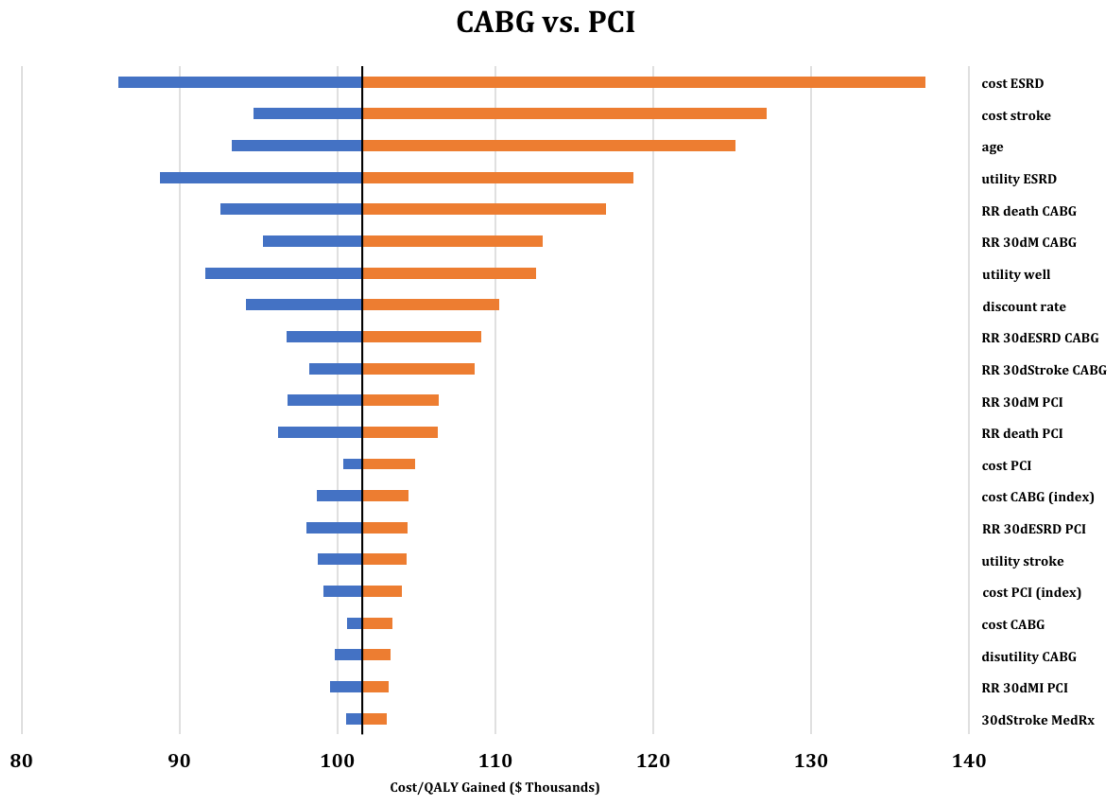
The curves begin after the initial 30-day treatment period, in all cases including the index hospitalization. Costs begin highest in the CABG group and lowest with medical therapy and continue to diverge over time.

Figure S4A. 1-way sensitivity analysis “tornado” plot, PCI vs. Medical therapy.
Model parameters were individually varied across their plausible intervals.



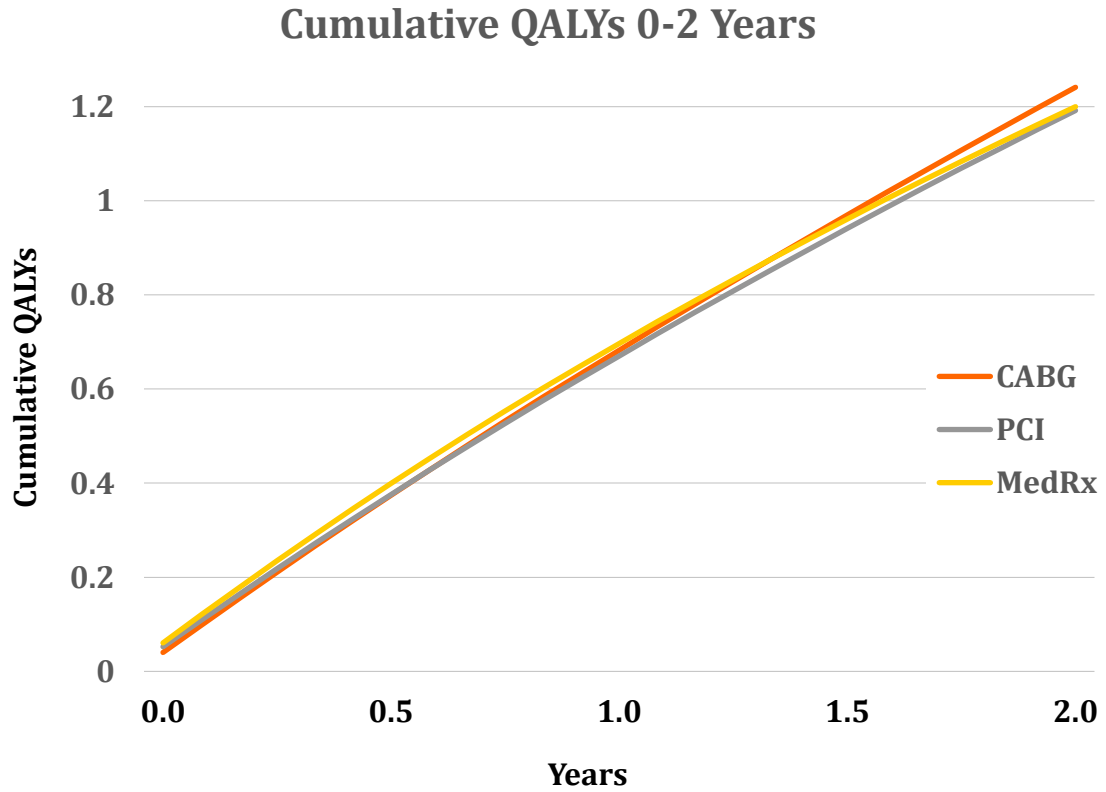
The range of resulting ICERs for the parameters with the most variation in the ICER were plotted on the x-axis. The vertical line at ~\$65,000 per QALY gained represents the base case result. See text for details.

Figure S4B. 1-way sensitivity analysis “tornado” plot, CABG vs. PCI.



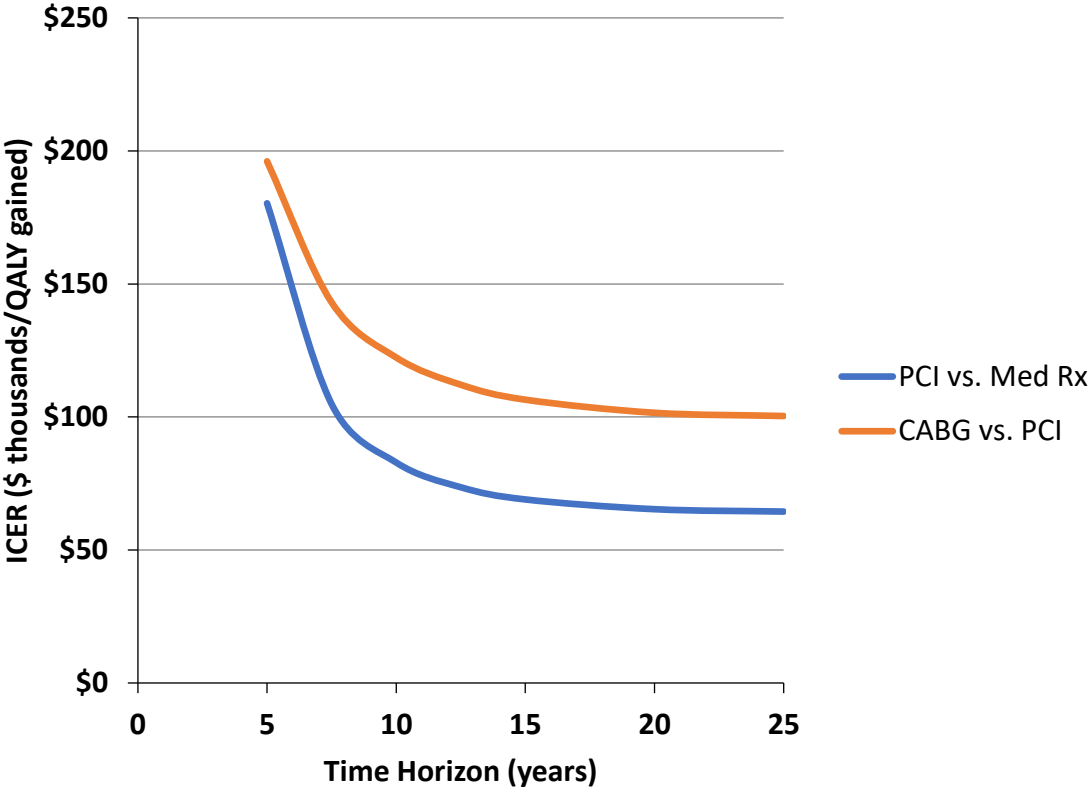
Computations and display as described for Figure S4A. The vertical line at ~\$101,000 per QALY gained represents the base case result.

Figure S5. Cumulative QALYs through 2 years.



Model-predicted cumulative QALYs through 2 years for the 3 treatment groups are plotted. Although mortality (Figure S2) diverged more quickly, the occurrence of more frequent adverse events with CABG resulted in only a small (<0.05) difference in QALYs at 2 years.

Figure S6. Model result with varying time horizon.



The ICERs for PCI vs. medical therapy and CABG vs. PCI are plotted according to the assumed time horizon of the model. At very short time horizons, the ICERs cannot be calculated but can be assumed to be more unfavorable.