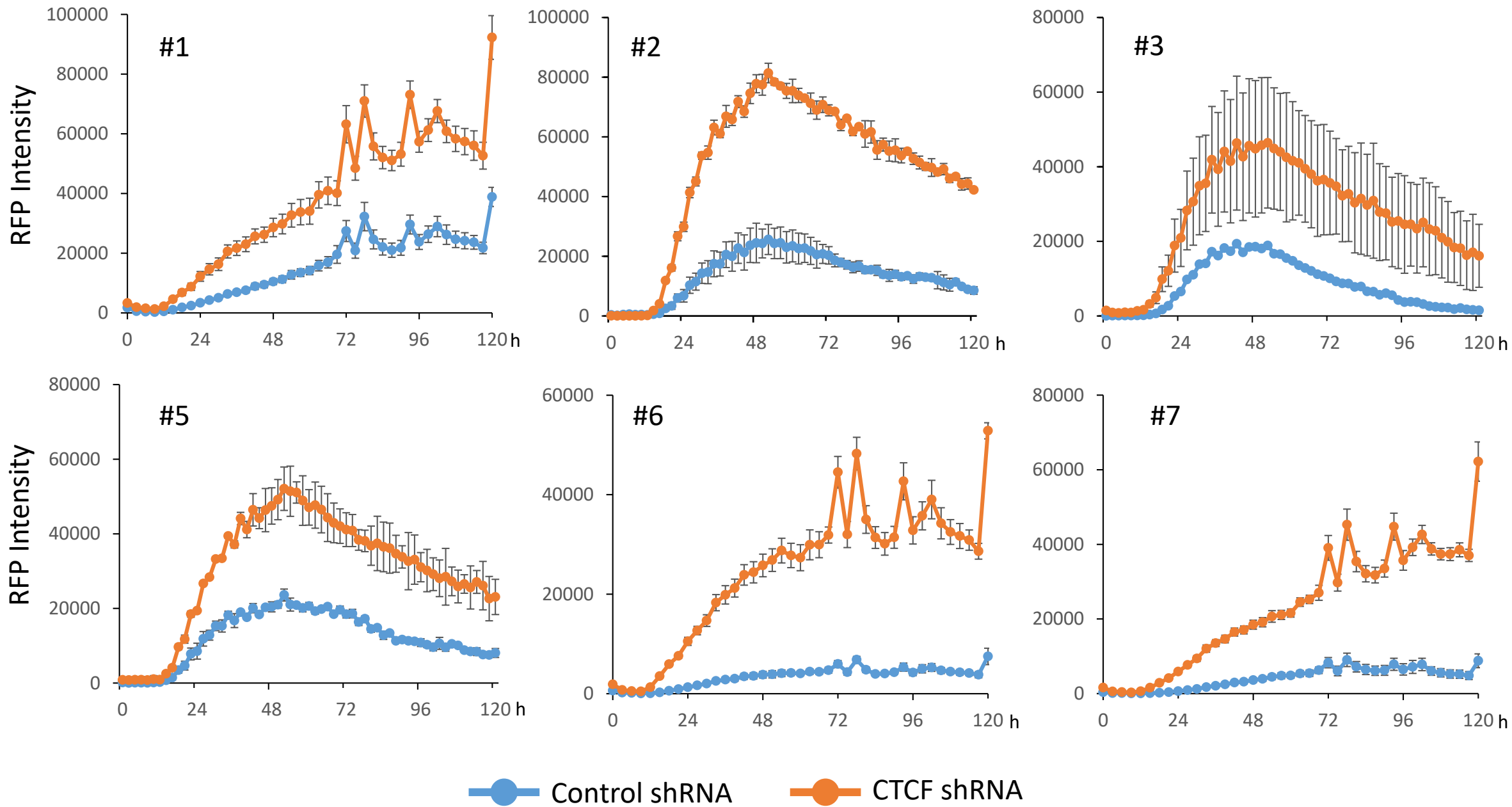
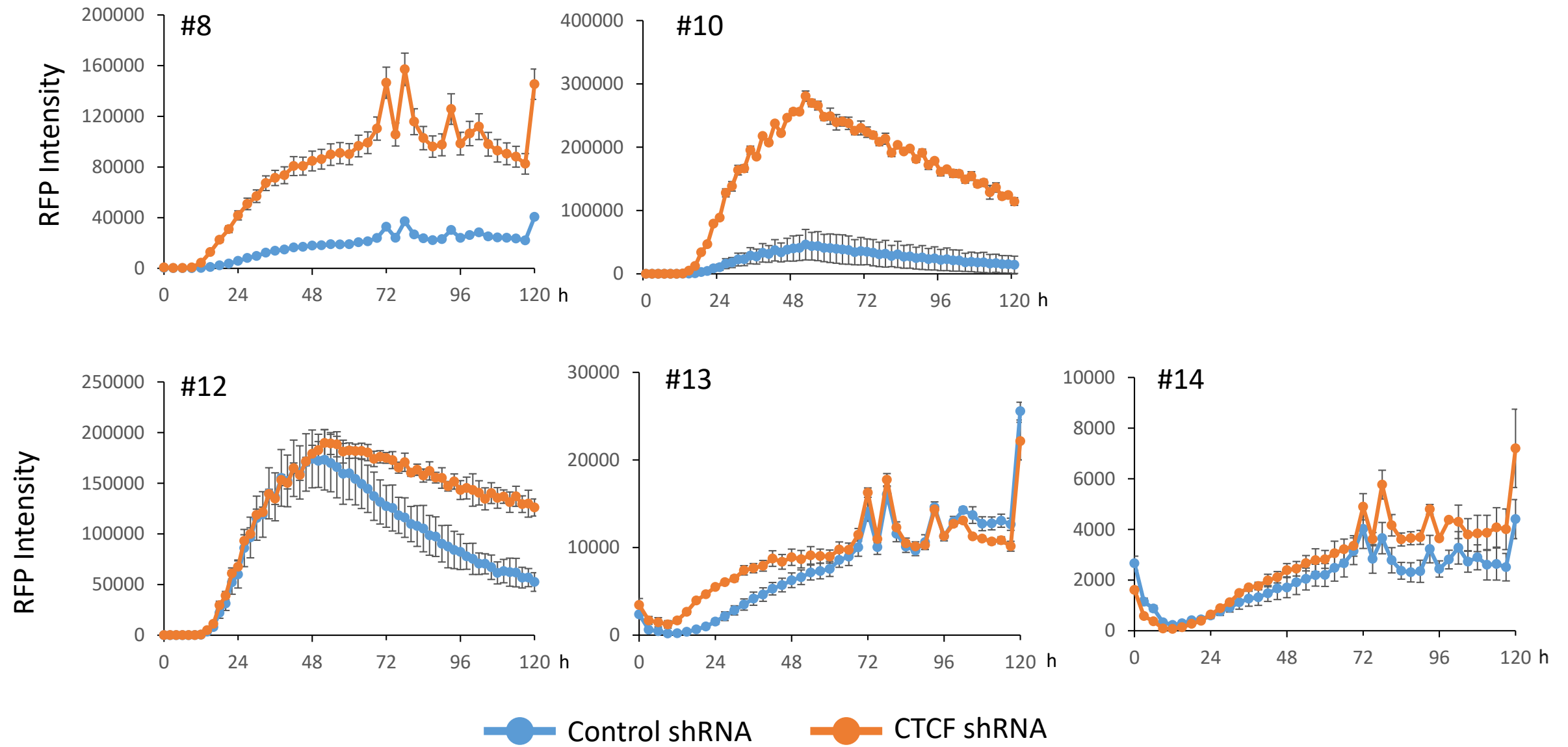


S8 Fig

S8 Fig**S8 Fig. Inhibition of CTCF binding to HTLV-1 provirus affects proviral gene transcription**

Clonal HTLV-1 infected JET cell lines were generated, each carrying a single, latent provirus at a unique integration site. Viral gene expression was activated with PMA/Ionomycin and monitored by measuring Tax mediated RFP production (Y- axis) using the IncuCyte live cell image system.