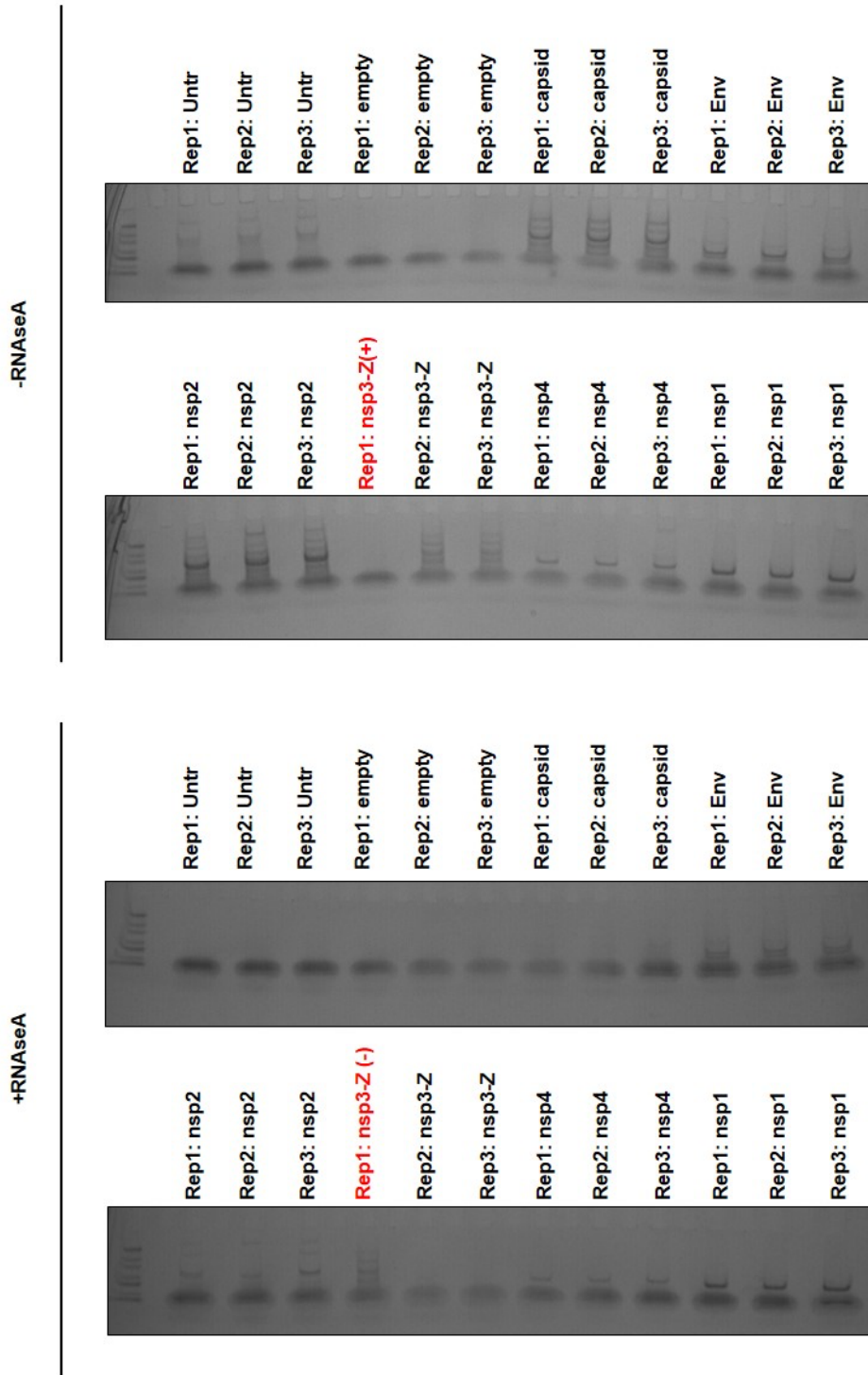


1 **Supporting information: Fig S1**

2



3

4 **Figure S1: Coomassie-stained gels showing eluate samples of SFV affinity purifications that were sent for mass**
 5 **spectrometry analysis.** Geldoc images of coomassie-stained gels showing eluates (20 μ L) from three biological replicates of
 6 each SFV affinity purification electrophoresed 1 cm into the gels, prior to cutting. Rectangular segments (10 mm x 3 mm)
 7 for each lane were cut from the gel and samples were processed for mass spectrometry analysis. Note that samples of Rep1:
 8 nsp3-Z were loaded in opposite positions, hence highlighted in red and denoted (+) and (-).
 9