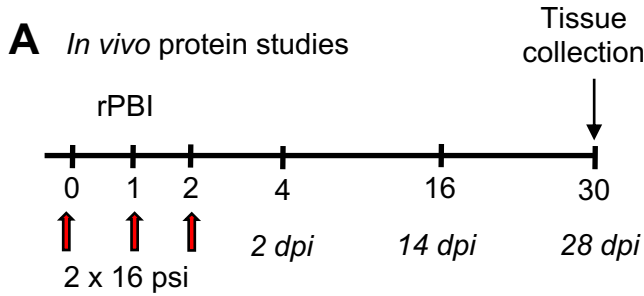


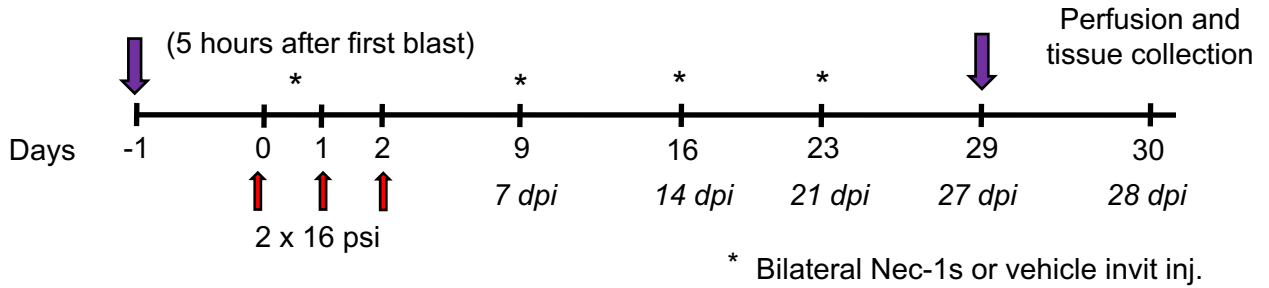
Supplementary Figure 1



B

Time point (dpi)	n (mice)	Measured endpoints
2, 14, 28	4	Retinal RIPK1 and RIPK3 immunofluorescent staining

C *In vivo* Nec-1s study



D Experimental groups, group sizes

Groups	n (mice)	Injury and treatment
Blast blocked	10	Blast overpressure wave blocked
rPBI + no invit	10	3 x 2 x 16 psi + no invit injections
rPBI + vehicle	10	3 x 2 x 16 psi + bilateral vehicle invit injections
rPBI + Nec-1s	10	3 x 2 x 16 psi + bilateral Nec-1s invit injections

E Measured endpoints and eyes analysed

Measured endpoints	Eyes analysed
OCT imaging	Both eyes
Total retinal and GCC thickness	Left direct blast eye
Intensity of vitreous haze on OCT images	Both eyes
RBPMs ⁺ RGC counts on retinal cryosections	Left direct blast eye
ED1 and GFAP IF staining on retinal and ON sections	Left direct blast eye
Axonal counts in ON	Left direct blast eye