

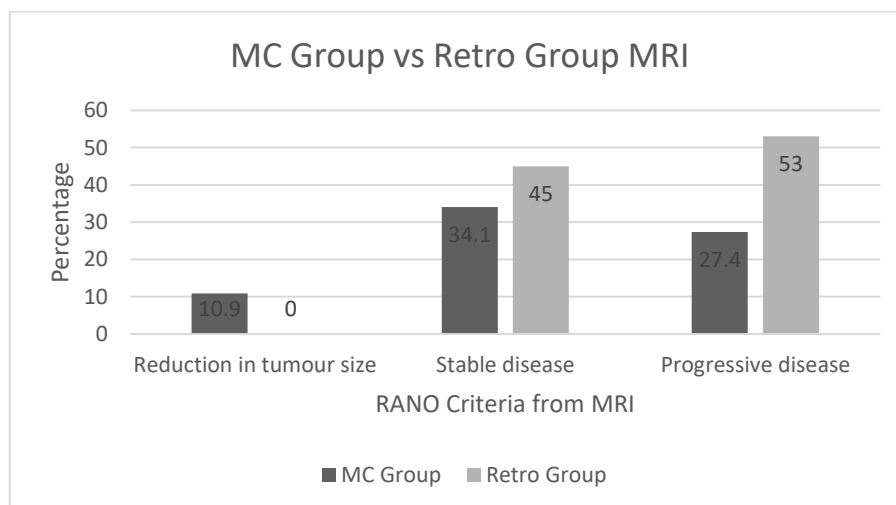
Supplementary Material

A PHASE 2 RANDOMISED, DOUBLE BLIND CLINICAL TRIAL ASSESSING THE TOLERABILITY OF TWO DIFFERENT RATIOS OF MEDICINAL CANNABIS IN PATIENTS WITH GLIOBLASTOMA MULTIFORME (GBM).

Supplemental information

1. Retrospective data comparison
2. Scores of blood pathology
3. Score of treatment related toxicity

RANO Criteria (Baseline to 12 weeks)	MC Group	Retro Group
Reduction in tumour size	8 (10.9%)	0 (0%)
Stable disease	25 (34.1%)	29 (45%)
Progressive disease	20 (27.4%)	34 (53%)



Supplementary Figure 1: Comparison of MRI results after 12 weeks

Supplementary Table 1: Scores of blood pathology markers (GEE, paired t test for Mean and SD)

No correlation between those who were taking phenytoin and carbinamine with blood levels.

Outcome		Baseline	Week 4	Week 8	Week 12	p- value
		<i>Mean (SD)</i>	<i>Mean (SD)</i>	<i>Mean (SD)</i>	<i>Mean (SD)</i>	
Sodium (135-145)	1:1	142.3 (2.7)	142.0 (2.6)	141.6 (2.8)	142.1 (2.3)	0.235
	4:1	141.4 (2.6)	141.5 (2.0)	141.0 (1.9)	141.7 (1.4)	
	Total	141.8 (2.8)	141.7 (2.3)	141.3 (2.4)	141.9 (1.8)	
Potassium (3.5-5.2)	1:1	5.25 (6.7)	4.12 (0.3)	4.06 (0.4)	1.14 (0.4)	0.306
	4:1	4.23 (0.2)	4.10 (0.3)	4.06 (0.4)	3.97 (0.2)	
	Total	4.75 (4.8)	4.11 (0.3)	4.06 (0.4)	4.05 (0.3)	
Chloride (95-110)	1:1	102.4 (3.2)	101.8 (2.7)	101.6 (2.8)	102.8 (2.1)	0.271
	4:1	101.5 (2.6)	101.7 (2.6)	101.0 (2.4)	101.6 (2.5)	
	Total	102.0 (2.9)	101.8 (2.6)	101.3 (2.6)	102.2 (2.4)	
HC03 (22-32)	1:1	26.27 (2.3)	25.42 (2.2)	25.6 (1.8)	24.5 (2.0)	0.067
	4:1	25.33 (2.2)	24.44 (2.2)	24.0 (4.4)	26.0 (2.0)	
	Total	25.81 (2.3)	24.90 (2.2)	24.8 (3.5)	25.3 (2.1)	
Urea (4.0-9.0)	1:1	5.3 (1.4)	5.8 (1.5)	5.4 (1.8)	5.5 (1.5)	0.358
	4:1	5.5 (2.0)	5.6 (1.8)	5.4 (1.8)	5.1 (1.9)	
	Total	5.4 (1.7)	5.7 (1.7)	5.4 (1.7)	5.3 (1.7)	
Creatinine (60-110)	1:1	73 (22.6)	69.4 (19.8)	72.4 (16.4)	71.5 (18.1)	0.222
	4:1	72.5 (18.2)	70.0 (13.0)	71.7 (16.9)	70.2 (11.5)	
	Total	72.7 (20.4)	69.7 (16.4)	72.0 (16.5)	70.8 (14.8)	
EGFR (>90)	1:1	86.6 (9.2)	86.3 (7.7)	86.3 (6.5)	86.2 (6.8)	0.387
	4:1	84.3 (9.9)	86.5 (5.6)	84.4 (10.1)	85.2 (7.2)	
	Total	85.5 (9.6)	86.4 (6.7)	85.3 (8.6)	85.6 (7.0)	
Glucose (3.0-5.5)	1:1	5.5 (1.2)	5.2 (1.5)	5.0 (1.3)	5.4 (1.2)	0.323
	4:1	5.6 (1.6)	5.5 (1.3)	5.6 (2.1)	4.9 (0.8)	
	Total	5.5 (1.4)	5.3 (1.4)	5.3 (1.8)	5.1 (1.0)	
Bilirubin (0-20)	1:1	8.2 (5.7)	7.6 (3.3)	9.1 (6.6)	7.4 (3.5)	0.149
	4:1	6.7 (4.3)	7.0 (4.3)	7.4 (5.7)	7.1 (4.4)	
	Total	7.5 (5.1)	7.2 (3.8)	8.2 (6.7)	7.2 (4.0)	
ALP (30-110)	1:1	71.3 (26.5)	65.0 (19.6)	68.5 (18)	66.1 (15.2)	0.661
	4:1	72.6 (27.2)	71.4 (35.2)	67.3 (24)	71.4 (25.3)	
	Total	71.9 (26.7)	68.5 (29.1)	67.8 (21)	68.8 (21.0)	
GGT	1:1	40.2 (44.3)	33.0 (32.6)	38.0 (49)	28.9 (40.4)	

	4:1	48.5 (51.8)	42.4 (69.8)	43.6 (65)	30.7 (31.5)	0.462
(5-50)	Total	44.3 (48.0)	38.1 (55.8)	41.0 (58)	29.8 (35.6)	
AST	1:1	22.8 (14.3)	20.2 (7.2)	22.9 (13)	19.3 (7.5)	
	4:1	22.1 (8.1)	20.9 (9.5)	20.1 (6.9)	20.6 (7.4)	0.545
(<36)	Total	22.5 (11.6)	20.6 (8.4)	21.4 (10)	20.0 (7.4)	
ALT	1:1	32.4 (31.5)	29.4 (24.1)	30.8 (28)	24.0 (21.7)	
	4:1	29.6 (18.0)	29.1 (23.8)	26.8 (19)	25.7 (14.4)	0.570
(<51)	Total	31.0 (25.6)	29.2 (23.7)	28.6 (24)	24.9 (18.0)	
Protein	1:1	67.7 (5.1)	66.8 (4.2)	66.5 (4.0)	67.0 (3.7)	
	4:1	68.8 (5.3)	67.6 (6.0)	68.3 (5.1)	68.1 (5.1)	0.250
(60-80)	Total	68.2 (5.2)	67.3 (5.2)	67.5 (4.7)	67.6 (4.5)	
Albumin	1:1	37.8 (7.1)	37.5 (5.6)	38.1 (3.6)	39.5 (2.0)	
	4:1	38.8 (3.6)	37.8 (3.2)	39.5 (3.3)	38.6 (3.6)	0.379
(33-48)	Total	38.3 (5.6)	37.7 (4.4)	38.9 (3.5)	39.1 (3.0)	
CRP	1:1	2.7 (3.8)	2.1 (2.4)	3.7 (7.1)	3.2 (5.8)	
	4:1	2.8 (4.2)	4.6 (7.3)	3.5 (6.4)	3.4 (4.6)	0.213
(<3)	Total	2.8 (4.0)	3.5 (5.7)	3.6 (6.7)	3.3 (5.1)	
Hb	1:1	138.4 (15)	136.4 (18)	136.8 (19)	134.1 (14.6)	
	4:1	133.2 (13)	130.1 (14)	129.8 (12)	127.9 (14.8)	0.063
(130-180)	Total	135.7 (14)	133.0 (16)	133.0 (15)	130.9 (14.9)	
WBC	1:1	6.3 (3.1)	6.6 (3)	6.1 (2.9)	5.3 (1.9)	
	4:1	5.5 (3.0)	5.5 (2)	5.2 (2.0)	5.0 (2.0)	0.189
(3.50-11.00)	Total	5.9 (3.1)	6.0 (2)	5.6 (2.4)	5.1 (2.0)	
PLT	1:1	197.9 (64)	217.5 (71)	198.5 (65)	202.1 (77.5)	
	4:1	190.5 (93)	195.1 (91)	189.7 (69)	179.0 (76.3)	0.423
(150-450)	Total	194.51(80)	205.5 (82)	193.8 (67)	190.3 (76.9)	
RBC	1:1	4.4 (0.4)	4.2 (0.8)	4.4 (0.6)	4.2 (0.5)	
	4:1	4.2 (0.5)	4.2 (0.6)	4.1 (0.5)	4.1 (0.6)	0.169
(4.50-6.50)	Total	4.3 (0.5)	4.2 (0.7)	4.3 (0.6)	4.1 (0.5)	
HCT	1:1	0.40 (0)	0.39 (0)	0.40 (0)	0.39 (0)	
	4:1	0.39 (0)	0.38 (0)	0.38 (0)	0.38 (0)	0.066
(0.40-0.54)	Total	0.39 (0)	0.38 (0)	0.39 (0)	0.39 (0)	
MCV	1:1	91.9 (4.3)	91.8 (4.8)	91.5 (4.8)	93.5 (4.5)	
	4:1	88.2 (17)	92.6 (5.8)	93.4 (6.6)	94.7 (7.0)	0.875
(80-100)	Total	90.0 (12)	92.2 (5.3)	92.5 (5.8)	94.1 (5.9)	
MCH	1:1	31.2 (1.7)	31.3 (1.9)	30.9 (2.2)	31.3 (1.7)	
	4:1	31.2 (2.3)	30.4 (4.3)	31.1 (2.8)	31.4 (2.6)	0.277

Supplementary Material

(26.5-33.0)	Total	31.2 (2.0)	30.8 (3.4)	31.0 (2.5)	31.4 (2.2)	
MCHC	1:1	339.9 (12)	340.6 (13)	334.8 (23)	335.3 (11.6)	0.644
	4:1	338.8 (9)	337.0 (12)	332.9 (12)	331.8 (9.6)	
(310-360)	Total	339.8 (10)	338.7 (13)	333.8 (18)	333.5 (10.6)	
RDW_CV	1:1	13.4 (0.8)	13.9 (1.2)	13.9 (1.3)	13.6 (1.1)	0.162
	4:1	14.0 (1.2)	14.2 (1.6)	13.8 (1.3)	13.6 (1.2)	
(12.0-14.5)	Total	13.8 (1.1)	14.0 (1.4)	13.8 (1.3)	13.6 (1.1)	
RDWSD	1:1	45.06 (2.8)	46.32 (4.3)	45.9 (4.3)	46.4 (4.7)	0.059
	4:1	47.10 (5.5)	48.01 (6.6)	47.1 (6.0)	46.7 (5.0)	
(38.0-48.0)	Total	46.11 (4.5)	47.22 (5.7)	46.5 (5.3)	46.6 (4.8)	
MPV	1:1	10.56 (1)	10.56 (1)	10.5 (1.0)	10.7 (1.0)	0.162
	4:1	10.30 (1)	10.30 (1)	10.4 (0.8)	10.6 (0.8)	
(7.4-11.7)	Total	10.43 (1)	10.43 (1)	10.4 (0.9)	10.6 (0.9)	
Neutrophil	1:1	6.37 (12)	6.67 (12.6)	4.25 (2.6)	3.68 (1.7)	0.259
	4:1	3.94 (2.7)	3.94 (2.7)	3.74 (1.7)	3.36 (1.6)	
(1.7-7.0)	Total	5.27 (9.0)	5.27 (9.0)	3.98 (2.2)	3.52 (1.6)	
Lymphocytes	1:1	0.35 (1.4)	1.35 (1.4)	1.28 (0.7)	1.10 (0.5)	0.153
	4:1	1.10 (0.5)	1.10 (0.5)	1.08 (0.5)	1.20 (0.5)	
(1.5-4.0)	Total	1.22 (1.0)	1.22 (1.0)	1.17 (0.6)	1.15 (0.5)	
Monocyte	1:1	0.47 (0.7)	0.47 (0.7)	0.39 (0.1)	0.36 (0.1)	0.165
	4:1	0.37 (0.2)	0.37 (0.2)	0.32 (0.1)	0.34 (0.1)	
(0.1-0.8)	Total	0.42 (0.5)	0.42 (0.5)	0.36 (0.1)	0.35 (0.1)	
Eosinophil	1:1	0.25 (0.7)	0.25 (0.7)	0.16 (0.2)	0.16 (0.1)	0.153
	4:1	0.09 (0.1)	0.09 (0.1)	0.10 (0.1)	0.10 (0.0)	
(0.04-0.44)	Total	0.17 (0.5)	0.17 (0.5)	0.13 (0.1)	0.13 (0.1)	
Basophil	1:1	0.02 (0.0)	0.02 (0.0)	0.01 (0.0)	0.02 (0.0)	0.907
	4:1	0.01 (0.0)	0.01 (0.0)	0.02 (0.0)	0.02 (0.0)	
(0.0-0.2)	Total	0.01 (0.0)	0.01 (0.0)	0.02 (0.0)	0.02 (0.0)	

Outcome		Baseline	Week 4	Week 8	Week 12
		<i>Mean (SD)</i>	<i>Mean (SD)</i>	<i>Mean (SD)</i>	<i>Mean (SD)</i>
Phenytoin	1:1	8.9 (11.45)	4.1	10	N/A
	4:1	0.8	1.1	1.9	N/A
	Total	6.2	3.5	5.9	
Carbamazepine	1:1	2 (0)	1.6	N/A	N/A
	4:1	2 (0)	2	N/A	N/A
	Total	2 (0)	1.7		

Supplementary Table 2: Treatment related toxicity – NCI CTC

Comparison of toxicity results between participants: (GEE, paired t test for Mean and SD)

Outcome		Baseline	Week 4	Week 8	Week 12	p- value
		<i>Mean (SD)</i>	<i>Mean (SD)</i>	<i>Mean (SD)</i>	<i>Mean (SD)</i>	
Dry Mouth	1:1	0.63 (0.96)	0.76 (0.80)	0.73 (0.89)	0.67 (0.90)	0.213
	4:1	0.70 (0.9)	1.07 (0.97)	0.88 (0.97)	0.78 (0.95)	
	Total	0.67 (0.93)	0.92 (0.90)	0.81 (0.93)	0.73 (0.92)	
Difficulty swallowing	1:1	0.17 (0.49)	0.28 (0.60)	0.23 (0.55)	0.17 (0.39)	0.387
	4:1	0.19 (0.39)	0.37 (0.66)	0.30 (0.57)	0.28 (0.59)	
	Total	0.18 (0.44)	0.32 (0.63)	0.27 (0.56)	0.23 (0.50)	
Mouth sores	1:1	0.09 (0.37)	0.05 (0.22)	0.11 (0.32)	0.25 (0.58)	0.626
	4:1	0.14 (0.47)	0.17 (0.44)	0.05 (0.33)	0.25 (0.70)	
	Total	0.12 (0.42)	0.11 (0.35)	0.08 (0.32)	0.25 (0.63)	
Mouth sores interference	1:1	0.14 (0.57)	0.02 (0.16)	0.08 (0.28)	0.14 (0.60)	0.662
	4:1	0.07 (0.46)	0.00 (0.00)	0.08 (0.50)	0.18 (0.68)	
	Total	0.10 (0.51)	0.01 (0.11)	0.08 (0.40)	0.16 (0.63)	
Cheilosis	1:1	0.04 (0.31)	0.05 (0.22)	0.14 (0.55)	0.07 (0.26)	0.842
	4:1	0.11 (0.32)	0.10 (0.30)	0.08 (0.36)	0.03 (0.18)	
	Total	0.08 (0.32)	0.07 (0.26)	0.11 (0.46)	0.05 (0.22)	
Voice changes	1:1	0.14 (0.35)	0.05 (0.22)	0.08 (0.28)	0.17 (0.39)	0.195
	4:1	0.19 (0.39)	0.15 (0.36)	0.16 (0.37)	0.22 (0.42)	
	Total	0.16 (0.37)	0.10 (0.30)	0.12 (0.33)	0.20 (0.40)	
Hoarseness	1:1	0.19 (0.45)	0.12 (0.40)	0.17 (0.38)	0.28 (0.53)	0.350
	4:1	0.40 (0.79)	0.20 (0.40)	0.16 (0.50)	0.28 (0.71)	
	Total	0.30 (0.65)	0.16 (0.40)	0.17 (0.44)	0.28 (0.62)	
Taste changes	1:1	0.21 (0.41)	0.28 (0.64)	0.32 (0.68)	0.17 (0.47)	0.152
	4:1	0.38 (0.69)	0.32 (0.69)	0.55 (0.84)	0.50 (0.92)	
	Total	0.30 (0.57)	0.30 (0.66)	0.44 (0.77)	0.33 (0.74)	
Reduced appetite	1:1	0.58 (0.83)	0.54 (0.75)	0.73 (0.93)	0.42 (0.69)	0.684
	4:1	0.59 (0.85)	0.67 (0.97)	0.80 (1.23)	0.60 (0.78)	
	Total	0.59 (0.84)	0.61 (0.86)	0.77 (1.09)	0.51 (0.73)	
Appetite interference	1:1	0.29 (0.64)	0.23 (0.54)	0.37 (0.83)	0.28 (0.65)	0.515
	4:1	0.21 (0.47)	0.13 (0.52)	0.32 (0.58)	0.37 (0.74)	
	Total	0.25 (0.55)	0.18 (0.53)	0.34 (0.71)	0.32 (0.69)	
Nausea	1:1	0.65 (0.79)	0.53 (0.82)	0.79 (1.12)	0.92 (1.29)	

	4:1	0.57 (0.88)	0.75 (0.98)	0.91 (0.96)	0.59 (0.93)	0.958	
	Total	0.61 (0.83)	0.64 (0.90)	0.85 (1.03)	0.75 (1.13)		
Nausea severity	1:1	0.48 (0.63)	0.47 (0.72)	0.52 (0.74)	0.57 (0.79)		
	4:1	0.45 (0.77)	0.62 (1.00)	0.83 (0.87)	0.60 (0.99)	0.448	
	Total	0.46 (0.70)	0.55 (0.87)	0.68 (0.82)	0.58 (0.88)		
Vomiting	1:1	0.19 (0.55)	0.23 (0.53)	0.14 (0.50)	0.25 (0.64)		
	4:1	0.19 (0.45)	0.12 (0.33)	0.19 (0.52)	0.17 (0.47)	0.551	
	Total	0.19 (0.50)	0.17 (0.44)	0.17 (0.50)	0.21 (0.56)		
Vomiting severity	1:1	0.17 (0.49)	0.23 (0.58)	0.08 (0.37)	0.28 (0.65)		
	4:1	0.16 (0.48)	0.15 (0.42)	0.20 (0.53)	0.11 (0.42)	0.606	
	Total	0.16 (0.48)	0.19 (0.51)	0.14 (0.46)	0.20 (0.55)		
Heart burn	1:1	0.43 (0.70)	0.38 (0.81)	0.29 (0.57)	0.32 (0.77)		
	4:1	0.35 (0.61)	0.52 (0.87)	0.55 (0.73)	0.35 (0.67)	0.412	
	Total	0.39 (0.66)	0.45 (0.84)	0.42 (0.67)	0.33 (0.72)		
Heart burn severity	1:1	0.29 (0.51)	0.30 (0.73)	0.24 (0.50)	0.21 (0.56)		
	4:1	0.30 (0.60)	0.40 (0.70)	0.41 (0.60)	0.25 (0.51)	0.350	
	Total	0.30 (0.55)	0.35 (0.71)	0.33 (0.56)	0.23 (0.53)		
Gas	1:1	0.09 (0.30)	0.15 (0.36)	0.26 (0.51)	0.17 (0.39)		
	4:1	0.16 (0.37)	0.25 (0.43)	0.05 (0.23)	0.17 (0.39)	0.848	
	Total	0.13 (0.34)	0.20 (0.40)	0.15 (0.40)	0.17 (0.38)		
Bloating	1:1	0.56 (0.86)	0.36 (0.75)	0.73 (0.96)	0.53 (0.74)		
	4:1	0.78 (1.11)	0.80 (1.18)	0.66 (1.01)	0.35 (0.78)	0.209	
	Total	0.67 (1.00)	0.58 (1.01)	0.70 (0.98)	0.44 (0.76)		
Bloating severity	1:1	0.35 (0.57)	0.35 (0.70)	0.35 (0.59)	0.32 (0.47)		
	4:1	0.65 (0.85)	0.62 (0.89)	0.52 (0.73)	0.25 (0.64)	0.034	4:1
	Total	0.50 (0.74)	0.49 (0.81)	0.44 (0.67)	0.28 (0.56)		
Hiccups	1:1	0.32 (0.65)	0.42 (0.68)	0.47 (0.86)	0.50 (0.83)		
	4:1	0.38 (0.79)	0.57 (0.90)	0.55 (0.99)	0.28 (0.59)	0.743	
	Total	0.35 (0.72)	0.50 (0.80)	0.51 (0.92)	0.39 (0.73)		
Hiccups severity	1:1	0.25 (0.58)	0.26 (0.50)	0.35 (0.64)	0.42 (0.69)		
	4:1	0.21 (0.51)	0.35 (0.69)	0.38 (0.72)	0.21 (0.49)	0.930	
	Total	0.23 (0.55)	0.30 (0.60)	0.37 (0.68)	0.32 (0.60)		
Constipation	1:1	0.67 (0.82)	0.41 (0.71)	0.70 (1.08)	0.50 (0.69)		
	4:1	0.61 (0.93)	0.77 (0.91)	0.41 (0.69)	0.64 (0.86)	0.660	
	Total	0.64 (0.88)	0.59 (0.84)	0.55 (0.91)	0.57 (0.78)		

Diarrhoea	1:1	0.39 (0.73)	0.36 (0.71)	0.61 (0.77)	0.53 (0.69)	0.376	
	4:1	0.54 (0.73)	0.50 (0.84)	0.55 (0.96)	0.64 (1.06)		
	Total	0.46 (0.73)	0.43 (0.78)	0.58 (0.87)	0.58 (0.88)		
Ab Pain Frequency	1:1	0.53 (0.89)	0.41 (0.81)	0.47 (.066)	0.21 (0.49)	0.217	
	4:1	0.52 (0.83)	0.62 (0.83)	0.69 (0.95)	0.32 (0.66)		
	Total	0.53 (0.86)	0.51 (0.82)	0.58 (0.82)	0.26 (0.58)		
Ab pain severity	1:1	0.41 (0.66)	0.30 (0.56)	0.44 (0.22)	0.25 (0.51)	0.267	
	4:1	0.47 (0.70)	0.47 (0.71)	0.50 (0.25)	0.33 (0.73)		
	Total	0.44 (0.68)	0.39 (0.64)	0.47 (0.31)	0.29 (0.62)		
Ab pain interference	1:1	0.12 (0.39)	0.15 (0.53)	0.20 (0.47)	0.17 (0.61)	0.685	
	4:1	0.11 (0.39)	0.23 (0.66)	0.25 (0.55)	0.21 (0.49)		
	Total	0.12 (0.39)	0.19 (0.60)	0.22 (0.51)	0.19 (0.55)		
Faecal incontinence frequency	1:1	0.10 (0.30)	0.12 (0.46)	0.17 (0.52)	0.03 (0.18)	0.785	
	4:1	0.07 (0.26)	0.10 (0.37)	0.13 (0.48)	0.28 (0.65)		
	Total	0.08 (0.28)	0.11 (0.42)	0.15 (0.50)	0.16 (0.49)		
Faecal incontinence interference	1:1	0.04 (0.21)	0.08 (0.27)	0.05 (0.23)	0.17 (0.54)	0.925	
	4:1	0.02 (0.15)	0.07 (0.34)	0.08 (0.28)	0.17 (0.47)		
	Total	0.03 (0.18)	0.07 (0.31)	0.07 (0.25)	0.17 (0.50)		
SOB severity	1:1	0.22 (0.53)	0.15 (0.43)	0.20 (0.47)	0.25 (0.51)	0.012	4:1
	4:1	0.52 (0.83)	0.52 (0.93)	0.50 (0.77)	0.32 (0.66)		
	Total	0.37 (0.71)	0.34 (0.74)	0.35 (0.66)	0.28 (0.59)		
SOB interference	1:1	0.19 (0.55)	0.15 (0.43)	0.15 (0.44)	0.10 (0.41)	0.037	4:1
	4:1	0.42 (0.83)	0.35 (0.66)	0.33 (0.79)	0.28 (0.65)		
	Total	0.31 (0.71)	0.25 (0.56)	0.24 (0.65)	0.19 (0.55)		
Cough severity	1:1	0.21 (0.47)	0.20 (0.46)	0.23 (0.55)	0.14 (0.44)	0.494	
	4:1	0.28 (0.59)	0.30 (0.60)	0.19 (0.46)	0.32 (0.86)		
	Total	0.25 (0.53)	0.25 (0.54)	0.21 (0.50)	0.23 (0.68)		
Cough interference	1:1	0.09 (0.30)	0.13 (0.54)	0.09 (0.29)	0.00 (0.00)	0.237	
	4:1	0.11 (0.50)	0.13 (0.34)	0.13 (0.35)	0.32 (0.86)		
	Total	0.10 (0.41)	0.13 (0.44)	0.11 (0.32)	0.16 (0.62)		
Wheezing	1:1	0.12 (0.39)	0.05 (0.22)	0.00 (0.00)	0.03 (0.18)	0.570	
	4:1	0.11 (0.39)	0.05 (0.22)	0.03 (0.17)	0.14 (0.52)		
	Total	0.12 (0.39)	0.05 (0.22)	0.01 (0.12)	0.08 (0.39)		
Swelling frequency	1:1	0.24 (0.62)	0.26 (0.64)	0.24 (0.61)	0.17 (0.39)	0.065	
	4:1	0.64 (1.07)	0.51 (1.09)	0.52 (1.05)	0.23 (0.51)		
	Total	0.44 (0.90)	0.38 (0.90)	0.39 (0.87)	0.20 (0.45)		

Swelling severity	1:1	0.19 (0.55)	0.23 (0.54)	0.17 (0.45)	0.17 (0.47)	0.122	
	4:1	0.47 (0.86)	0.40 (0.77)	0.33 (0.67)	0.17 (0.39)		
	Total	0.33 (0.73)	0.32 (0.67)	0.25 (0.58)	0.17 (0.43)		
Swelling interference	1:1	0.07 (0.46)	0.05 (0.22)	0.05 (0.23)	0.07 (0.05)	0.038	
	4:1	0.33 (0.12)	0.17 (0.54)	0.50 (1.74)	0.07 (0.04)		
	Total	0.20 (0.07)	0.11 (0.42)	0.28 (1.27)	0.07 (0.03)		
Heart palpitations frequency	1:1	0.12 (0.45)	0.26 (0.60)	0.32 (0.68)	0.32 (0.61)	0.956	
	4:1	0.28 (0.67)	0.20 (0.51)	0.22 (0.54)	0.21 (0.56)		
	Total	0.20 (0.57)	0.23 (0.55)	0.27 (0.61)	0.26 (0.58)		
Heart palpitations severity	1:1	0.07 (0.26)	0.15 (0.36)	0.32 (0.57)	0.25 (0.51)	0.626	
	4:1	0.21 (0.08)	0.25 (0.63)	0.27 (0.51)	0.14 (0.35)		
	Total	0.14 (0.04)	0.20 (0.51)	0.28 (0.54)	0.19 (0.44)		
Rash	1:1	0.07 (0.26)	0.07 (0.27)	0.05 (0.23)	0.10 (0.31)	0.324	
	4:1	0.04 (0.21)	0.15 (0.36)	0.19 (0.40)	0.14 (0.35)		
	Total	0.06 (0.23)	0.11 (0.32)	0.12 (0.33)	0.12 (0.33)		
Skin dryness	1:1	0.39 (0.70)	0.42 (0.72)	0.44 (0.70)	0.32 (0.66)	0.034	4:1
	4:1	0.69 (0.86)	0.72 (0.98)	0.66 (0.89)	0.71 (0.89)		
	Total	0.54 (0.80)	0.57 (0.87)	0.55 (0.81)	0.51 (0.80)		
Acne	1:1	0.21 (0.52)	0.02 (0.16)	0.05 (0.23)	0.14 (0.53)	0.442	
	4:1	0.14 (0.35)	0.10 (0.30)	0.22 (0.63)	0.17 (0.47)		
	Total	0.18 (0.44)	0.06 (0.24)	0.14 (0.49)	0.16 (0.50)		
Hair loss	1:1	0.41 (0.77)	0.13 (0.34)	0.23 (0.60)	0.25 (0.58)	0.621	
	4:1	0.35 (0.75)	0.17 (0.54)	0.36 (0.76)	0.32 (0.81)		
	Total	0.38 (0.76)	0.15 (0.45)	0.30 (0.68)	0.28 (0.70)		
Itching	1:1	0.31 (0.72)	0.26 (0.55)	0.32 (0.53)	0.32 (0.72)	0.089	
	4:1	0.47 (0.86)	0.53 (0.78)	0.50 (0.84)	0.60 (0.78)		
	Total	0.39 (0.79)	0.40 (0.69)	0.41 (0.71)	0.46 (0.76)		
Hives	1:1	0.07 (0.26)	0.02 (0.16)	0.08 (0.28)	0.07 (0.26)	0.275	
	4:1	0.07 (0.26)	0.15 (0.36)	0.11 (0.31)	0.10 (0.31)		
	Total	0.07 (0.26)	0.08 (0.28)	0.10 (0.30)	0.08 (0.28)		
Hand foot syndrome	1:1	0.07 (0.34)	0.02 (0.16)	0.02 (0.17)	0.10 (0.31)	0.984	
	4:1	0.04 (0.21)	0.02 (0.15)	0.02 (0.16)	0.14 (0.44)		
	Total	0.06 (0.28)	0.02 (0.15)	0.02 (0.16)	0.12 (0.38)		
Nail loss	1:1	0.00 (0.00)	0.02 (0.16)	0.02 (0.17)	0.00 (0.00)	0.427	
	4:1	0.04 (0.03)	0.02 (0.15)	0.00 (0.00)	0.03 (0.18)		

	Total	0.02 (0.01)	0.02 (0.15)	0.01 (0.11)	0.01 (0.13)		
Nail ridging	1:1	0.12 (0.33)	0.10 (0.31)	0.11 (0.32)	0.10 (0.31)	0.908	
	4:1	0.11 (0.32)	0.10 (0.30)	0.08 (0.28)	0.21 (0.41)		
	Total	0.12 (0.32)	0.10 (0.30)	0.10 (0.30)	0.16 (0.37)		
Nail dis-colouration	1:1	0.02 (0.15)	0.00 (0.00)	0.05 (0.23)	0.10 (0.31)	0.300	
	4:1	0.07 (0.26)	0.05 (0.22)	0.11 (0.31)	0.10 (0.31)		
	Total	0.04 (0.21)	0.02 (0.15)	0.08 (0.28)	0.10 (0.31)		
Phyto-sensitivity	1:1	0.14 (0.35)	0.02 (0.16)	0.02 (0.17)	0.07 (0.26)	0.404	
	4:1	0.04 (0.21)	0.03 (0.22)	0.05 (0.23)	0.03 (0.18)		
	Total	0.09 (0.29)	0.02 (0.19)	0.04 (0.20)	0.05 (0.22)		
Bed sores	1:1	0.02 (0.15)	0.02 (0.16)	0.02 (0.02)	0.00 (0.00)	0.230	
	4:1	0.00 (0.00)	0.00 (0.00)	0.00 (0.00)	0.00 (0.00)		
	Total	0.01 (0.10)	0.01 (0.11)	0.01 (0.01)	0.00 (0.00)		
Radiation skin reactions	1:1	4.31 (1.57)	0.35 (1.22)	4.70 (1.19)	4.57 (1.34)	0.417	
	4:1	4.21 (1.68)	0.00 (0.00)	4.58 (1.40)	4.39 (1.59)		
	Total	4.26 (0.62)	0.16 (0.86)	4.64 (1.29)	4.48 (1.46)		
Skin darkening	1:1	0.07 (0.26)	0.02 (0.16)	0.03 (0.17)	0.12 (0.33)	0.766	
	4:1	0.04 (0.21)	0.02 (0.15)	0.08 (0.36)	0.03 (0.19)		
	Total	0.06 (0.24)	0.02 (0.15)	0.05 (0.29)	0.07 (0.27)		
Stretch marks	1:1	0.02 (0.15)	0.02 (0.16)	0.06 (0.24)	0.07 (0.26)	1.000	
	4:1	0.02 (0.15)	0.05 (0.22)	0.05 (0.33)	0.03 (0.18)		
	Total	0.02 (0.15)	0.03 (0.19)	0.05 (0.29)	0.05 (0.22)		
Numbness and tingling severity	1:1	0.39 (0.73)	0.28 (0.68)	0.36 (0.89)	0.28 (0.65)	0.076	
	4:1	0.76 (0.95)	0.55 (0.74)	0.55 (0.77)	0.17 (0.39)		
	Total	0.57 (0.87)	0.41 (0.72)	0.46 (0.83)	0.23 (0.53)		
Numbness and tingling interference	1:1	0.26 (0.67)	0.25 (0.63)	0.28 (0.88)	0.21 (0.62)	0.637	
	4:1	0.33 (0.78)	0.37 (0.70)	0.33 (0.58)	0.07 (0.26)		
	Total	0.30 (0.72)	0.31 (0.67)	0.30 (0.73)	0.14 (0.48)		
Dizziness severity	1:1	0.51 (0.63)	0.43 (0.71)	0.48 (0.71)	0.46 (0.83)	0.071	4:1
	4:1	0.76 (0.95)	0.80 (0.91)	0.75 (0.99)	0.46 (0.74)		
	Total	0.63 (0.82)	0.62 (0.83)	0.62 (0.87)	0.46 (0.78)		
Dizziness interference	1:1	0.39 (0.58)	0.28 (0.60)	0.42 (0.75)	0.50 (0.17)	0.218	
	4:1	0.64 (0.98)	0.42 (0.81)	0.58 (0.87)	0.37 (0.13)		
	Total	0.51 (0.81)	0.35 (0.71)	0.50 (0.81)	0.43 (0.10)		
Blurred vision severity	1:1	0.48 (0.77)	0.51 (0.96)	0.45 (0.97)	0.40 (0.93)	0.452	
	4:1	0.66 (0.90)	0.47 (0.84)	0.58 (0.87)	0.55 (0.80)		

	Total	0.57 (0.84)	0.49 (0.90)	0.52 (0.91)	0.48 (0.86)		
Blurred vision interference	1:1	0.32 (0.69)	0.41 (0.93)	0.36 (0.82)	0.39 (0.91)	0.292	
	4:1	0.54 (0.99)	0.40 (0.70)	0.58 (0.90)	0.42 (0.83)		
	Total	0.43 (0.86)	0.40 (0.82)	0.47 (0.86)	0.41 (0.86)		
Flashing light severity	1:1	0.04 (0.21)	0.07 (0.26)	0.18 (0.58)	0.28 (0.53)	0.320	
	4:1	0.19 (0.45)	0.15 (0.36)	0.25 (0.50)	0.14 (0.35)		
	Total	0.12 (0.36)	0.11 (0.31)	0.21 (0.53)	0.21 (0.45)		
Visual floaters	1:1	0.12 (0.33)	0.13 (0.34)	0.18 (0.39)	0.28 (0.46)	0.037	1:1
	4:1	0.38 (0.49)	0.35 (0.53)	0.30 (0.52)	0.21 (0.41)		
	Total	0.25 (0.43)	0.24 (0.46)	0.24 (0.46)	0.25 (0.43)		
Watery eyes severity	1:1	0.17 (0.44)	0.10 (0.30)	0.42 (0.66)	0.25 (0.52)	0.700	
	4:1	0.28 (0.67)	0.25 (0.58)	0.27 (0.56)	0.10 (0.31)		
	Total	0.22 (0.57)	0.17 (0.47)	0.34 (0.61)	0.18 (0.43)		
Watery eyes interference	1:1	0.12 (0.39)	0.07 (0.26)	0.09 (0.29)	0.18 (0.39)	0.660	
	4:1	0.21 (0.64)	0.12 (0.33)	0.13 (0.35)	0.00 (0.00)		
	Total	0.16 (0.53)	0.10 (0.30)	0.11 (0.32)	0.09 (0.29)		
Ringling in the ears	1:1	0.34 (0.65)	0.23 (0.53)	0.30 (0.58)	0.46 (0.74)	0.581	
	4:1	0.45 (0.77)	0.32 (0.65)	0.30 (0.57)	0.25 (0.51)		
	Total	0.39 (0.71)	0.27 (0.59)	0.30 (0.57)	0.35 (0.64)		
Concentration severity	1:1	0.85 (0.90)	0.71 (0.85)	0.90 (1.02)	0.71 (0.89)	0.033	4:1
	4:1	1.26 (1.08)	1.07 (0.82)	1.05 (1.04)	1.00 (0.94)		
	Total	1.06 (1.01)	0.89 (0.85)	0.98 (1.02)	0.85 (0.92)		
Concentration frequency	1:1	0.68 (0.81)	0.50 (0.79)	0.81 (1.13)	0.75 (0.96)	0.027	4:1
	4:1	1.26 (1.26)	1.00 (0.96)	0.94 (0.95)	0.75 (0.92)		
	Total	0.97 (1.10)	0.75 (0.91)	0.88 (1.03)	0.75 (0.93)		
Memory severity	1:1	0.87 (0.82)	0.75 (0.72)	0.96 (0.99)	0.89 (0.95)	0.115	
	4:1	1.11 (1.19)	1.05 (0.95)	1.08 (1.02)	1.07 (1.01)		
	Total	1.00 (1.03)	0.90 (0.86)	1.02 (1.00)	0.98 (0.98)		
Memory interference	1:1	0.73 (0.74)	0.48 (0.85)	0.78 (0.94)	0.78 (0.99)	0.175	
	4:1	1.02 (1.07)	0.87 (0.85)	0.77 (0.84)	0.71 (0.93)		
	Total	0.87 (0.92)	0.68 (0.87)	0.77 (0.88)	0.75 (0.95)		
General pain frequency	1:1	0.87 (1.03)	0.43 (0.68)	0.53 (0.71)	0.66 (0.87)	0.192	
	4:1	0.97 (0.09)	0.82 (1.08)	0.82 (1.09)	0.92 (1.35)		
	Total	0.93 (1.05)	0.63 (0.93)	0.68 (0.94)	0.80 (1.14)		
General pain severity	1:1	0.70 (0.87)	0.33 (0.57)	0.69 (1.04)	0.46 (0.57)	0.511	
	4:1	0.78 (0.97)	0.62 (0.83)	0.58 (0.80)	0.53 (0.92)		
	Total	0.74 (0.92)	0.48 (0.73)	0.63 (0.92)	0.50 (0.76)		

General pain interference	1:1	0.48 (0.89)	0.23 (0.58)	0.30 (0.63)	0.32 (0.47)	0.107	
	4:1	0.68 (0.96)	0.52 (0.81)	0.61 (0.96)	0.42 (0.92)		
	Total	0.58 (0.92)	0.38 (0.72)	0.46 (0.83)	0.37 (0.72)		
Headache frequency	1:1	0.92 (1.05)	0.51 (0.68)	0.81 (0.99)	0.64 (0.73)	0.258	
	4:1	1.07 (1.11)	0.85 (1.02)	0.75 (1.07)	0.67 (0.90)		
	Total	1.00 (1.08)	0.68 (0.88)	0.77 (1.03)	0.66 (0.81)		
Headache severity	1:1	0.80 (0.92)	0.50 (0.78)	0.66 (0.88)	0.53 (0.57)	0.717	
	4:1	0.80 (0.89)	0.66 (0.92)	0.61 (0.83)	0.53 (0.69)		
	Total	0.80 (0.90)	0.58 (0.86)	0.63 (0.85)	0.53 (0.63)		
Headache interference	1:1	0.55 (0.87)	0.25 (0.55)	0.32 (0.58)	0.42 (0.63)	0.593	
	4:1	0.54 (0.83)	0.39 (0.67)	0.52 (0.86)	0.25 (0.58)		
	Total	0.54 (0.84)	0.32 (0.62)	0.42 (0.73)	0.33 (0.61)		
Muscle pain frequency	1:1	0.85 (1.09)	0.86 (1.25)	0.54 (0.79)	0.60 (0.78)	0.161	
	4:1	1.14 (1.33)	0.89 (1.07)	0.88 (1.05)	1.03 (1.31)		
	Total	1.00 (0.22)	0.88 (1.15)	0.72 (0.94)	0.81 (1.09)		
Muscle pain Severity	1:1	0.60 (0.89)	0.58 (0.73)	0.50 (0.61)	0.44 (0.50)	0.121	
	4:1	0.85 (1.02)	0.66 (0.86)	0.68 (0.83)	0.78 (0.91)		
	Total	0.73 (0.96)	0.62 (0.80)	0.59 (0.73)	0.61 (0.75)		
Muscle pain interference	1:1	0.41 (0.83)	0.29 (0.57)	0.35 (0.59)	0.25 (0.44)	0.019	4:1
	4:1	0.83 (1.08)	0.53 (0.96)	0.51 (0.75)	0.57 (0.92)		
	Total	0.62 (0.98)	0.42 (0.80)	0.43 (0.67)	0.41 (0.73)		
Joint pain frequency	1:1	0.67 (0.94)	0.56 (1.14)	0.61 (1.01)	0.57 (0.92)	0.460	
	4:1	0.88 (1.25)	0.51 (0.88)	0.71 (1.20)	0.75 (0.96)		
	Total	0.78 (1.11)	0.53 (1.01)	0.66 (1.10)	0.66 (0.93)		
Joint pain severity	1:1	0.48 (0.74)	0.43 (0.68)	0.52 (0.78)	0.35 (0.48)	0.286	
	4:1	0.73 (0.98)	0.43 (0.82)	0.48 (0.81)	0.64 (0.86)		
	Total	0.61 (0.88)	0.43 (0.75)	0.50 (0.79)	0.50 (0.71)		
Joint pain interference	1:1	0.43 (0.97)	0.24 (0.54)	0.48 (0.75)	0.21 (0.41)	0.0203	
	4:1	0.69 (1.17)	0.35 (0.77)	0.45 (0.85)	0.46 (0.79)		
	Total	0.56 (1.08)	0.30 (0.67)	0.47 (0.80)	0.33 (0.64)		
Insomnia severity	1:1	0.68 (1.08)	0.37 (0.72)	0.32 (0.53)	0.35 (0.62)	0.011	4:1
	4:1	1.45 (1.31)	0.64 (0.87)	0.51 (0.78)	0.46 (0.69)		
	Total	1.07 (1.25)	0.51 (0.80)	0.42 (0.67)	0.41 (0.65)		
Insomnia frequency	1:1	0.58 (0.86)	0.37 (0.68)	0.41 (0.65)	0.28 (0.53)	0.076	4:1
	4:1	1.11 (1.17)	0.56 (0.88)	0.45 (0.78)	0.42 (0.69)		

	Total	0.85 (1.06)	0.47 (0.79)	0.43 (0.71)	0.35 (0.61)		
Fatigue severity	1:1	1.35 (1.02)	1.24 (1.21)	1.32 (1.14)	1.17 (0.94)	0.051	4:1
	4:1	1.78 (1.27)	1.61 (1.06)	1.60 (1.21)	1.40 (1.15)		
	Total	1.57 (1.57)	1.43 (1.14)	1.46 (1.18)	1.29 (1.04)		
Fatigue interference	1:1	1.17 (0.97)	1.02 (1.25)	1.23 (1.18)	0.96 (0.92)	0.146	
	4:1	1.52 (1.29)	1.23 (1.13)	1.51 (1.24)	1.14 (1.23)		
	Total	1.34 (1.15)	1.13 (1.19)	1.37 (1.21)	1.05 (1.07)		
Anxiety frequency	1:1	1.12 (1.17)	0.86 (1.00)	1.06 (1.05)	1.07 (1.05)	0.871	
	4:1	1.33 (1.24)	0.82 (0.84)	1.02 (0.98)	0.96 (0.87)		
	Total	1.27 (1.20)	0.84 (0.91)	1.04 (1.01)	1.01 (0.96)		
Anxiety severity	1:1	0.73 (0.86)	0.52 (0.68)	0.79 (0.88)	0.78 (0.83)	0.240	
	4:1	1.04 (1.03)	0.60 (0.70)	0.94 (0.95)	0.78 (0.78)		
	Total	0.89 (0.96)	0.56 (0.69)	0.86 (0.91)	0.78 (0.80)		
Anxiety interference	1:1	0.53 (0.77)	0.28 (0.51)	0.38 (0.69)	0.35 (0.55)	0.289	
	4:1	0.76 (1.00)	0.32 (0.57)	0.48 (0.65)	0.35 (0.62)		
	Total	0.65 (0.90)	0.30 (0.54)	0.43 (0.67)	0.35 (0.58)		
Discouraged frequency	1:1	0.82 (0.97)	0.57 (0.91)	0.67 (0.91)	0.82 (0.86)	0.488	
	4:1	0.88 (1.06)	0.37 (0.54)	0.54 (0.78)	0.53 (0.74)		
	Total	0.85 (1.01)	0.47 (0.75)	0.60 (0.84)	0.67 (0.81)		
Discouraged severity	1:1	0.65 (0.79)	0.32 (0.62)	0.52 (0.82)	0.66 (0.73)	0.892	
	4:1	0.66 (0.90)	0.32 (0.47)	0.54 (0.81)	0.46 (0.63)		
	Total	0.66 (0.84)	0.32 (0.54)	0.53 (0.81)	0.56 (0.68)		
Discouraged interference	1:1	0.43 (0.70)	0.21 (0.58)	0.54 (0.83)	0.37 (0.56)	0.619	
	4:1	0.57 (0.85)	0.32 (0.61)	0.37 (0.59)	0.39 (0.68)		
	Total	0.50 (0.78)	0.27 (0.59)	0.45 (0.72)	0.38 (0.62)		
Sad frequency	1:1	1.29 (1.10)	0.97 (0.94)	2.26 (7.08)	1.07 (0.93)	0.237	
	4:1	1.14 (0.92)	0.94 (0.82)	1.00 (0.93)	0.71 (0.80)		
	Total	1.21 (1.01)	0.96 (0.88)	1.62 (5.02)	0.89 (0.88)		
Sad severity	1:1	1.02 (0.96)	0.70 (0.81)	0.94 (0.88)	0.82 (0.72)	0.799	
	4:1	0.97 (0.84)	0.82 (0.84)	0.74 (0.78)	0.64 (0.73)		
	Total	1.00 (0.89)	0.76 (0.82)	0.84 (0.83)	0.73 (0.72)		
Sad interference	1:1	0.51 (0.74)	0.43 (0.76)	0.50 (0.82)	0.50 (0.63)	0.903	
	4:1	0.61 (0.69)	0.40 (0.74)	0.38 (0.60)	0.39 (0.73)		
	Total	0.56 (0.71)	0.41 (0.74)	0.44 (0.72)	0.44 (0.68)		
Bruising	1:1	0.17 (0.38)	0.13 (0.34)	0.17 (0.38)	0.17 (0.39)	0.064	4:1
	4:1	0.35 (0.48)	0.17 (0.38)	0.34 (0.53)	0.25 (0.44)		

	Total	0.26 (0.44)	0.15 (0.36)	0.26 (0.47)	0.21 (0.41)		
Chills frequency	1:1	0.29 (0.67)	0.18 (0.60)	0.50 (0.96)	0.39 (0.78)	0.187	
	4:1	0.51 (0.84)	0.37 (0.83)	0.42 (0.69)	0.71 (1.04)		
	Total	0.40 (0.76)	0.28 (0.73)	0.46 (0.83)	0.55 (0.93)		
Chills severity	1:1	0.17 (0.38)	0.08 (0.27)	0.38 (0.73)	0.42 (0.69)	0.189	
	4:1	0.36 (0.62)	0.22 (0.57)	0.26 (0.51)	0.67 (0.90)		
	Total	0.26 (0.52)	0.15 (0.46)	0.32 (0.63)	0.55 (0.80)		
Sweating frequency	1:1	0.43 (0.80)	0.28 (0.73)	0.33 (0.54)	0.14 (0.44)	0.472	
	4:1	0.52 (1.03)	0.25 (0.63)	0.28 (0.62)	0.50 (0.83)		
	Total	0.48 (0.92)	0.27 (0.68)	0.30 (0.57)	0.32 (0.69)		
Sweating severity	1:1	0.29 (0.60)	0.20 (0.52)	0.34 (0.54)	0.07 (0.26)	0.470	
	4:1	0.41 (0.86)	0.25 (0.63)	0.25 (0.64)	0.35 (0.62)		
	Total	0.35 (0.74)	0.22 (0.57)	0.29 (0.59)	0.21 (0.49)		
Decreased sweating	1:1	0.00 (0.00)	0.00 (0.00)	0.03 (0.17)	0.00 (0.00)	0.069	4:1
	4:1	0.07 (0.34)	0.12 (0.64)	0.02 (0.16)	0.10 (0.56)		
	Total	0.03 (0.24)	0.06 (0.46)	0.02 (0.17)	0.05 (0.40)		
Hot flashes frequency	1:1	0.17 (0.54)	0.20 (0.61)	0.18 (0.52)	0.17 (0.61)	0.171	
	4:1	0.47 (0.89)	0.40 (0.81)	0.22 (0.63)	0.39 (0.78)		
	Total	0.32 (0.75)	0.30 (0.72)	0.20 (0.58)	0.28 (0.70)		
Hot flashes interference	1:1	0.17 (0.62)	0.13 (0.41)	0.12 (0.41)	0.14 (0.45)	0.334	
	4:1	0.33 (0.65)	0.25 (0.58)	0.22 (0.63)	0.25 (0.51)		
	Total	0.25 (0.64)	0.19 (0.51)	0.17 (0.54)	0.20 (0.48)		
Nose bleeds frequency	1:1	0.02 (0.15)	0.02 (0.16)	0.00 (0.00)	0.03 (0.18)	0.049	4:1
	4:1	0.14 (0.35)	0.12 (0.40)	0.13 (0.42)	0.03 (0.18)		
	Total	0.08 (0.27)	0.07 (0.31)	0.07 (0.31)	0.03 (0.18)		
Nose bleeds severity	1:1	0.02 (0.15)	0.02 (0.16)	0.00 (0.00)	0.03 (0.18)	0.108	
	4:1	0.11 (0.32)	0.07 (0.26)	0.11 (0.32)	0.03 (0.18)		
	Total	0.07 (0.26)	0.05 (0.22)	0.05 (0.23)	0.03 (0.18)		
Pain and swelling	1:1	0.00 (0.00)	0.43 (1.04)	0.66 (1.19)	0.82 (1.30)	0.755	
	4:1	0.00 (0.00)	0.45 (1.03)	0.55 (1.05)	0.71 (1.24)		
	Total	0.00 (0.00)	0.44 (1.03)	0.60 (1.11)	0.76 (1.26)		
Body odour	1:1	0.26 (0.59)	0.25 (0.59)	0.39 (0.70)	0.25 (0.51)	0.740	
	4:1	0.23 (0.48)	0.45 (0.67)	0.25 (0.55)	0.25 (0.44)		
	Total	0.25 (0.53)	0.35 (0.64)	0.31 (0.62)	0.25 (0.47)		

