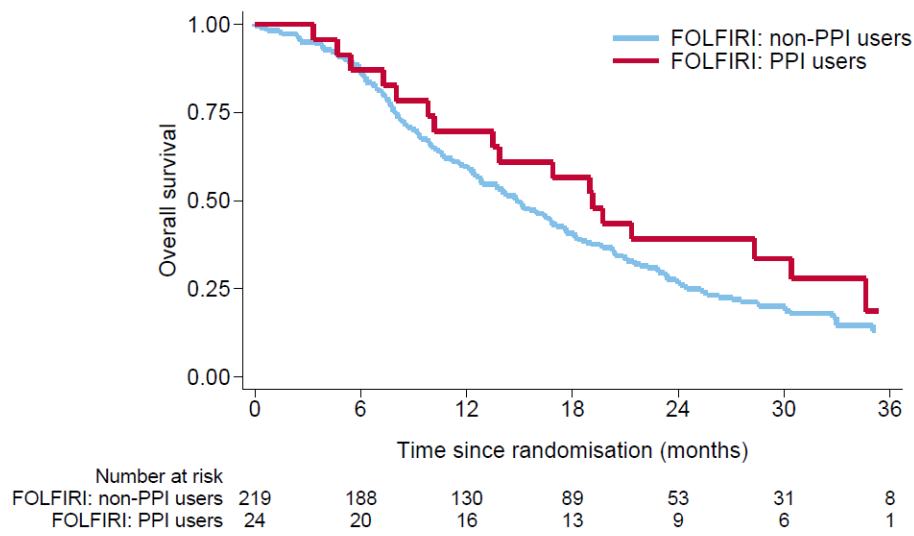


Supplemental Figures for
Proton pump inhibitor use and the efficacy of chemotherapy in metastatic colorectal cancer: a post hoc analysis
of a randomized phase 3 trial (AXEPT)
Sun Young Kim et al.

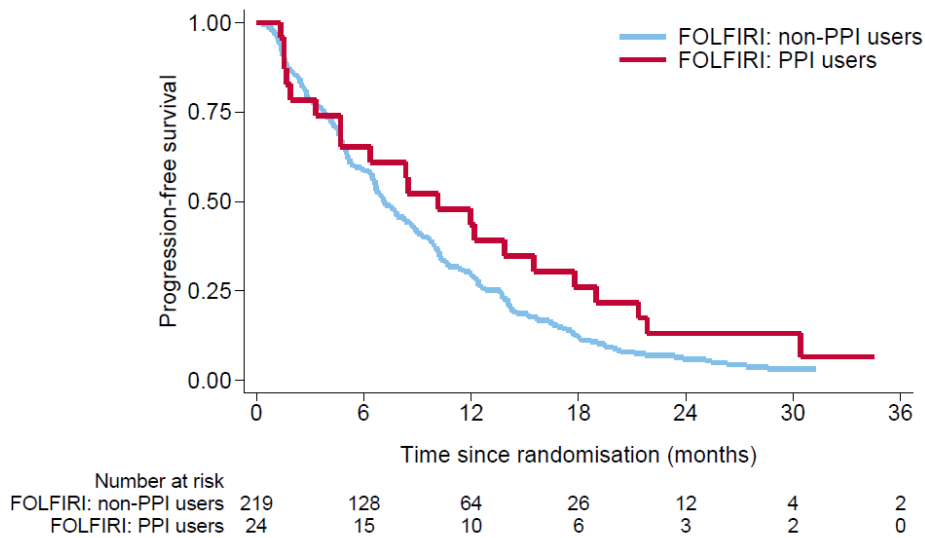
Figure S1. Overall survival (A) and progression-free survival (B) according to PPI use in the FOLFIRI arm

FOLFIRI=leucovorin, fluorouracil, and irinotecan. PPI=proton pump inhibitor.

A.



B.

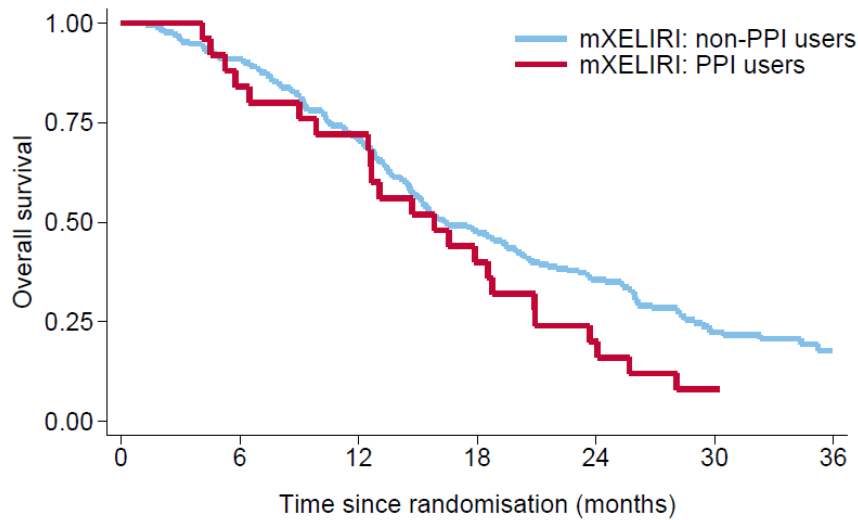


Supplemental Figures for
Proton pump inhibitor use and the efficacy of chemotherapy in metastatic colorectal cancer: a post hoc analysis
of a randomized phase 3 trial (AXEPT)
Sun Young Kim et al.

Figure S2. Overall survival (A) and progression-free survival (B) according to PPI use in the mXELIRI arm

mXELIRI=modified capecitabine plus irinotecan. PPI=proton pump inhibitor.

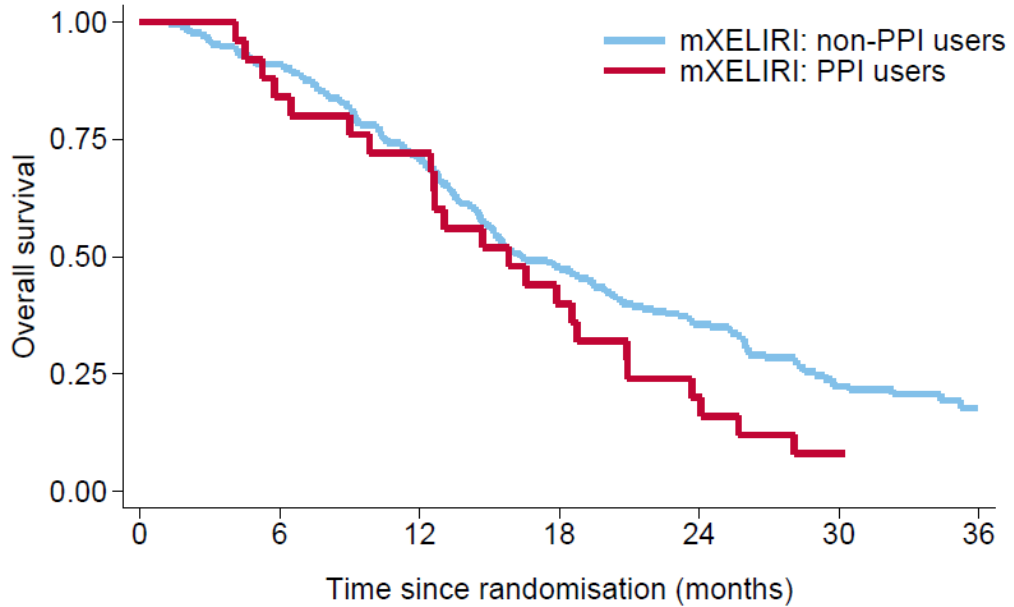
A.



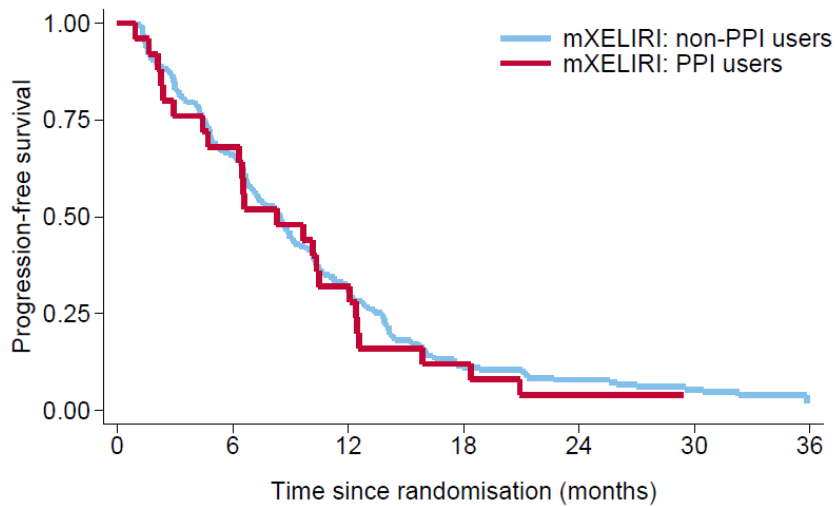
	Number at risk						
	0	6	12	18	24	30	36
mXELIRI: non-PPI users	214	191	147	99	62	29	9
mXELIRI: PPI users	25	21	18	10	5	1	0

B.

Supplemental Figures for
Proton pump inhibitor use and the efficacy of chemotherapy in metastatic colorectal cancer: a post hoc analysis
of a randomized phase 3 trial (AXEPT)
Sun Young Kim et al.



	0	6	12	18	24	30	36
Number at risk							
mXELIRI: non-PPI users	214	191	147	99	62	29	9
mXELIRI: PPI users	25	21	18	10	5	1	0



	0	6	12	18	24	30	36
Number at risk							
mXELIRI: non-PPI users	214	135	63	21	13	8	1
mXELIRI: PPI users	25	17	8	3	1	0	0