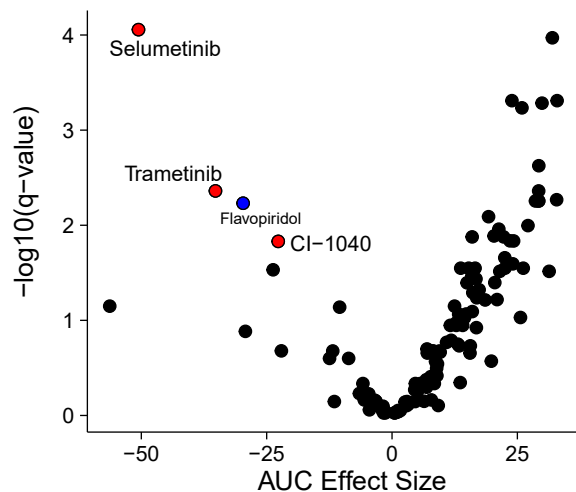
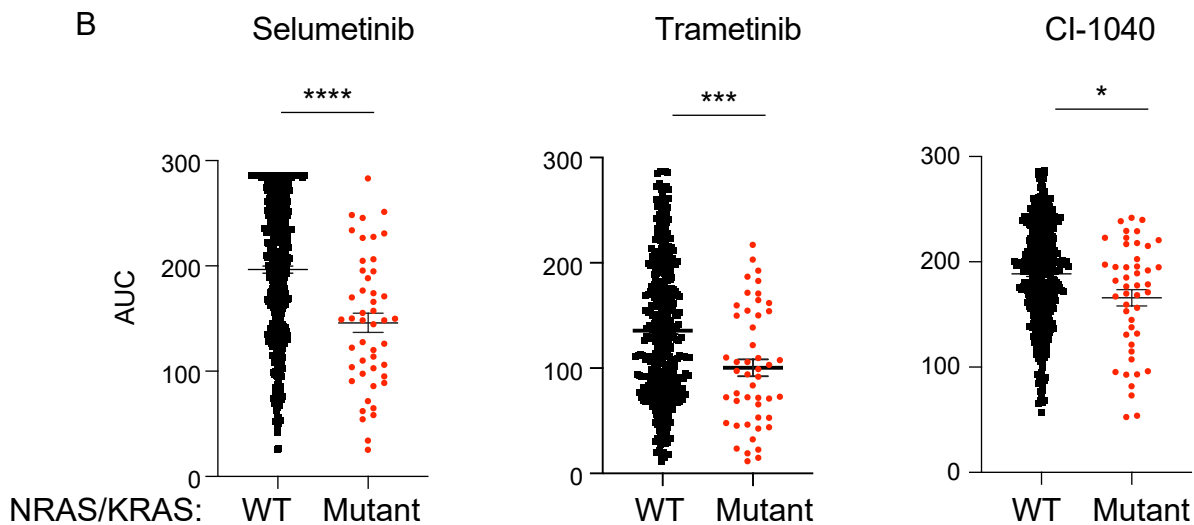


A



B



**Supplementary Figure 3: Analysis of Beat AML data shows NRAS/KRAS mutant samples to be differentially sensitive to MEK inhibitors.** A) Volcano plot of a two class-comparison drug AUC in NRAS/KRAS mutant vs wildtype samples in the Beat AML database. X-axis displays the mean difference in AUC (effect size) between the two groups with more negative values indicating lower mean AUC in NRAS/KRAS mutant samples. Y-axis displays -log<sub>10</sub>(q-value) from a two-sided t-test with Benjamini Hochberg correction. MEK inhibitors are highlighted in red. B) Shown are individual AUC for the indicated MEK inhibitors, with average and SEM. \*\*\*\*P<0.0001, \*\*\*P=0.0004, \*P=0.012 using Mann-Whitney test.