

Investigation of the mechanisms of VEGF-mediated compensatory lung growth: The role of the VEGF heparin-binding domain

Lumeng J. Yu^{1,2}, Victoria H. Ko^{1,2}, Duy T. Dao^{1,2}, Jordan D. Secor^{1,2}, Amy Pan^{1,2}, Bennet S. Cho^{1,2}, Paul D. Mitchell³, Hiroko Kishikawa^{1,2}, Diane R. Bielenberg¹, Mark Puder^{1,2*}

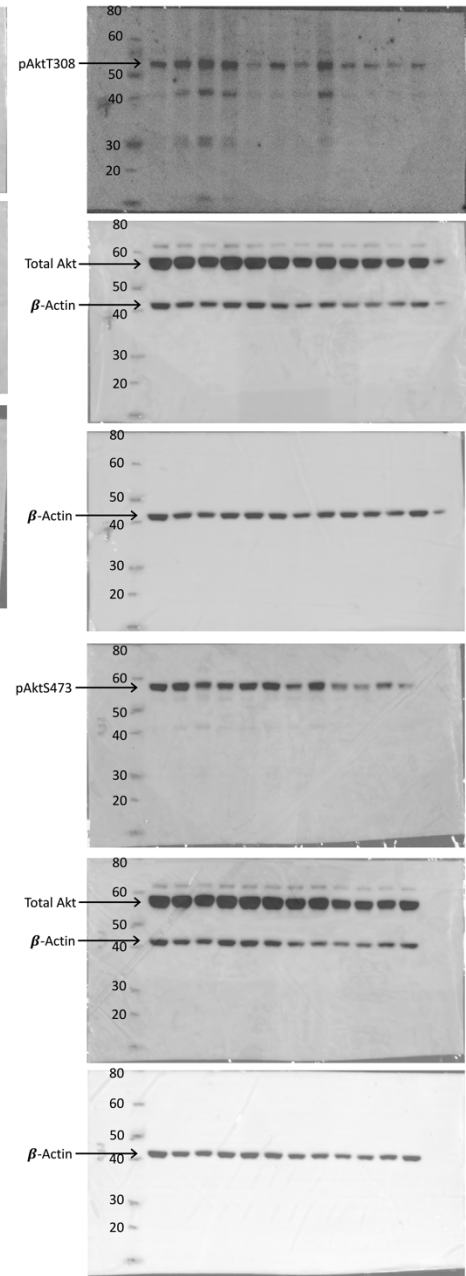
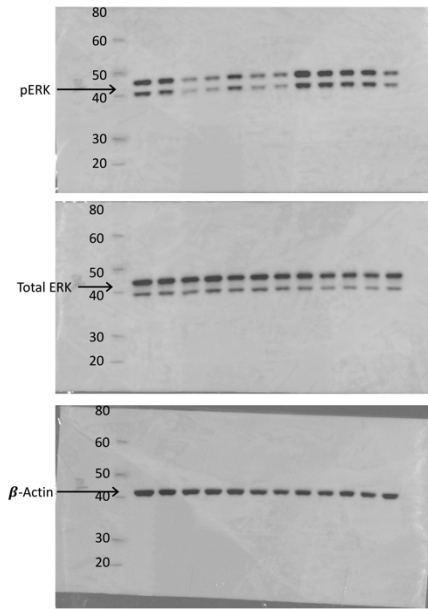
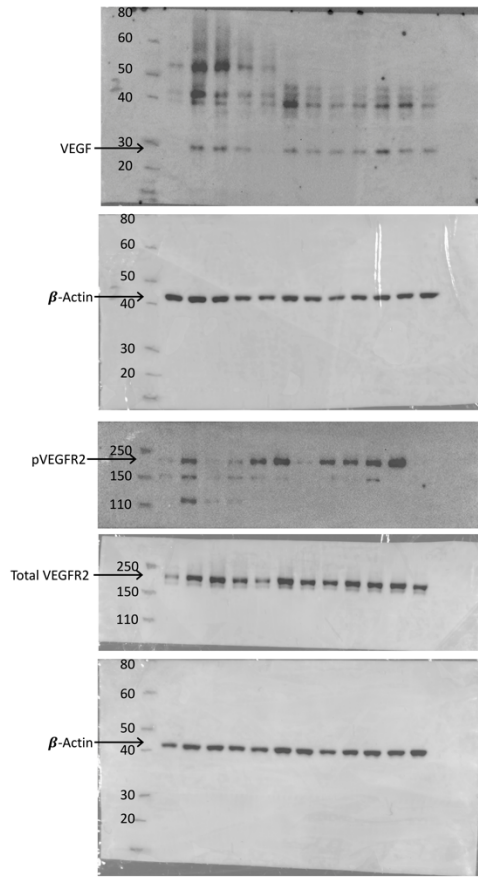
¹ Vascular Biology Program, Boston Children's Hospital, Harvard Medical School, Boston, MA 02115, USA

² Department of Surgery, Boston Children's Hospital, Harvard Medical School, 300 Longwood Ave, Fegan 3, Boston, MA 02115, USA

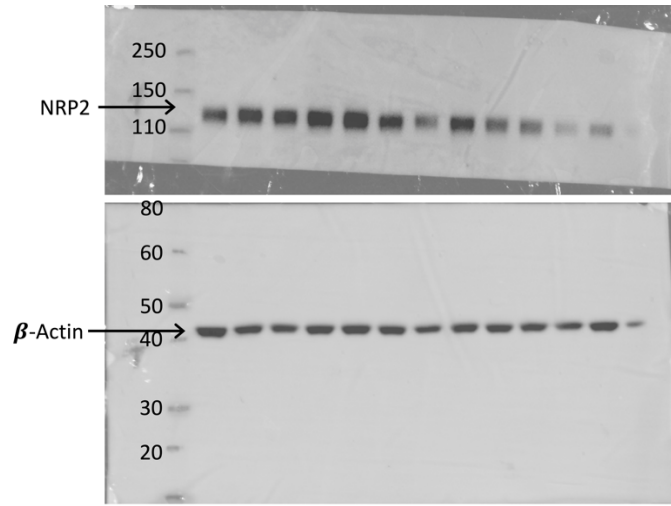
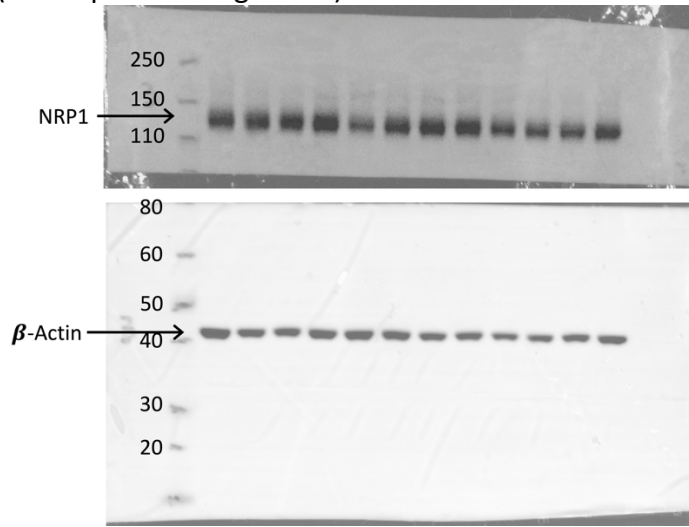
³ Institutional Centers for Clinical and Translational Research, Boston Children's Hospital, Boston, MA 02115, USA

*Correspondence to: mark.puder@childrens.harvard.edu

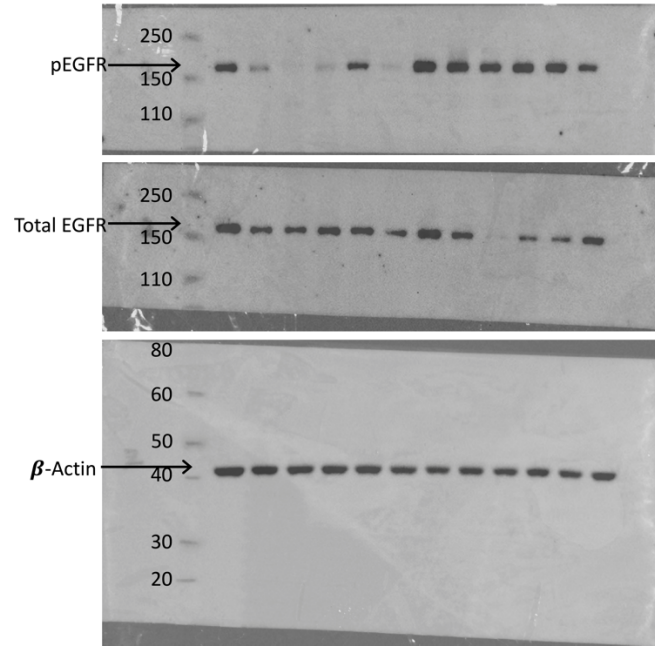
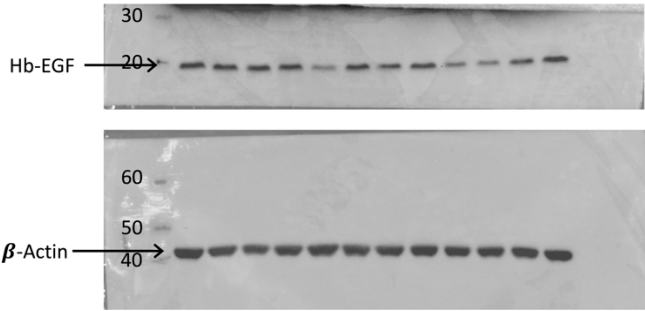
Supplementary Information File 1
(Corresponds to Figure 4A)



Supplementary Information File 2
(Corresponds to Figure 4C)



Supplementary Information File 3
(Corresponds to Figure 4E)



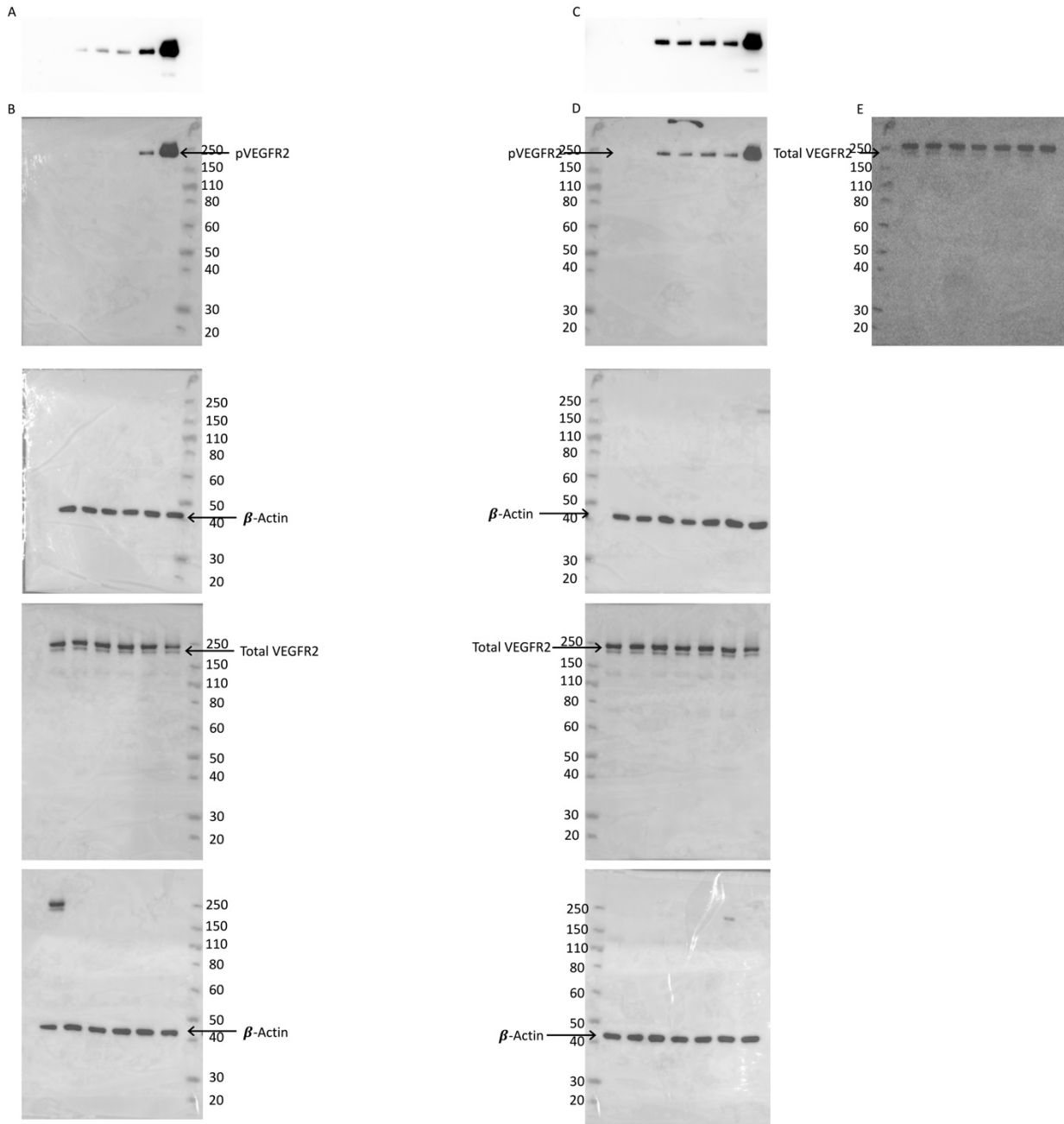
Supplementary Information File 4

(A, B Corresponds to Figure 6A)(C, D Corresponds to Figure 6C)

A, C – 3 minute exposure

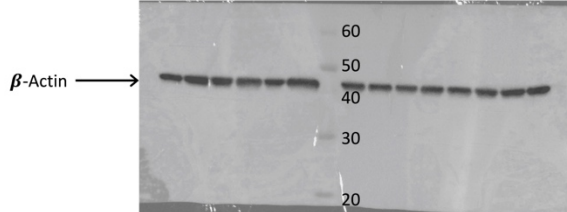
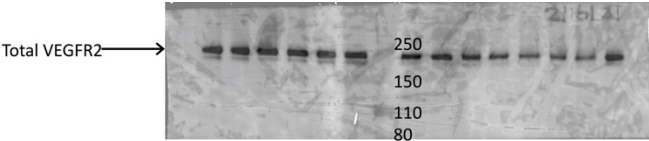
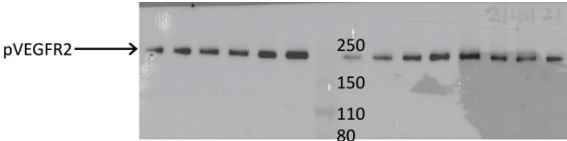
B, D – 30 second Exposure

E – Blot D was stripped and reprobred with total VEGFR2 primary antibody to demonstrate pattern near-identical to total VEGFR2 blot performed simultaneously using the same lysate on a different gel. As identical technique was performed by the same operator for all blots in Figure 6/Supplementary Information File 4, no additional stripping/reprobing experiments were performed to verify total VEGFR2 results.



Supplementary Information File 5

(Corresponds to Supplemental Figure 4A (left side of marker), C (right side of marker))



Supplementary Information File 6
(Corresponds to Supplemental Figure 5A)

