

Figure S1 Statistical identification of a baseline IL-8 cutoff. ROC curves analyses on OS and PFS for all patients with available IL-8 levels. As the OS ROC curve obtained the highest area under the curve (AUC =0.71), the Youden's index (sensitivity + specificity-1) for the OS ROC curve was considered to select the threshold level as 7 pg/mL.

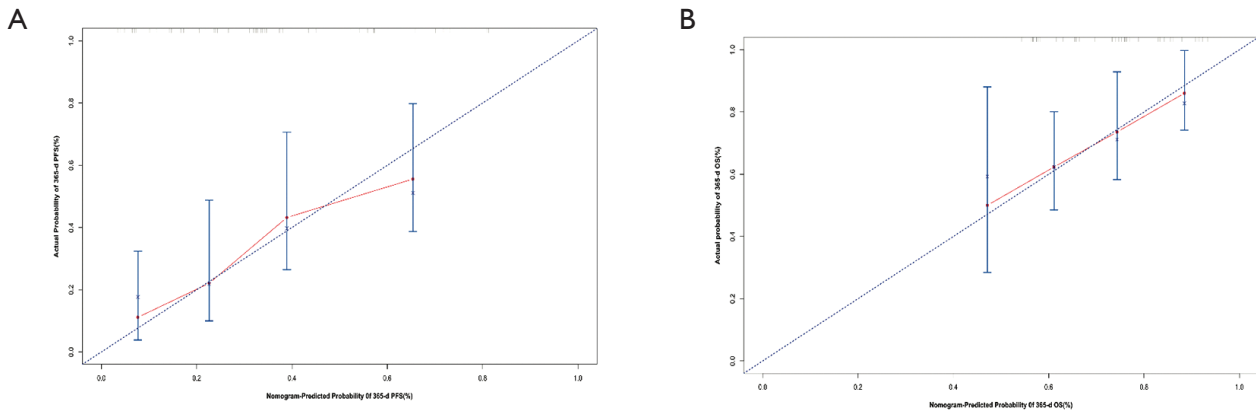


Figure S2 Calibration curves for predicting 1-year survival of patients. (A) One year overall survival; (B) one year progression-free survival. Nomogram-predicted survival is plotted on the x-axis; actual survival probability is plotted on the y-axis. A plot among 45-degree line would indicate a perfect calibration model in which the predicted outcomes are identical to the actual outcomes.