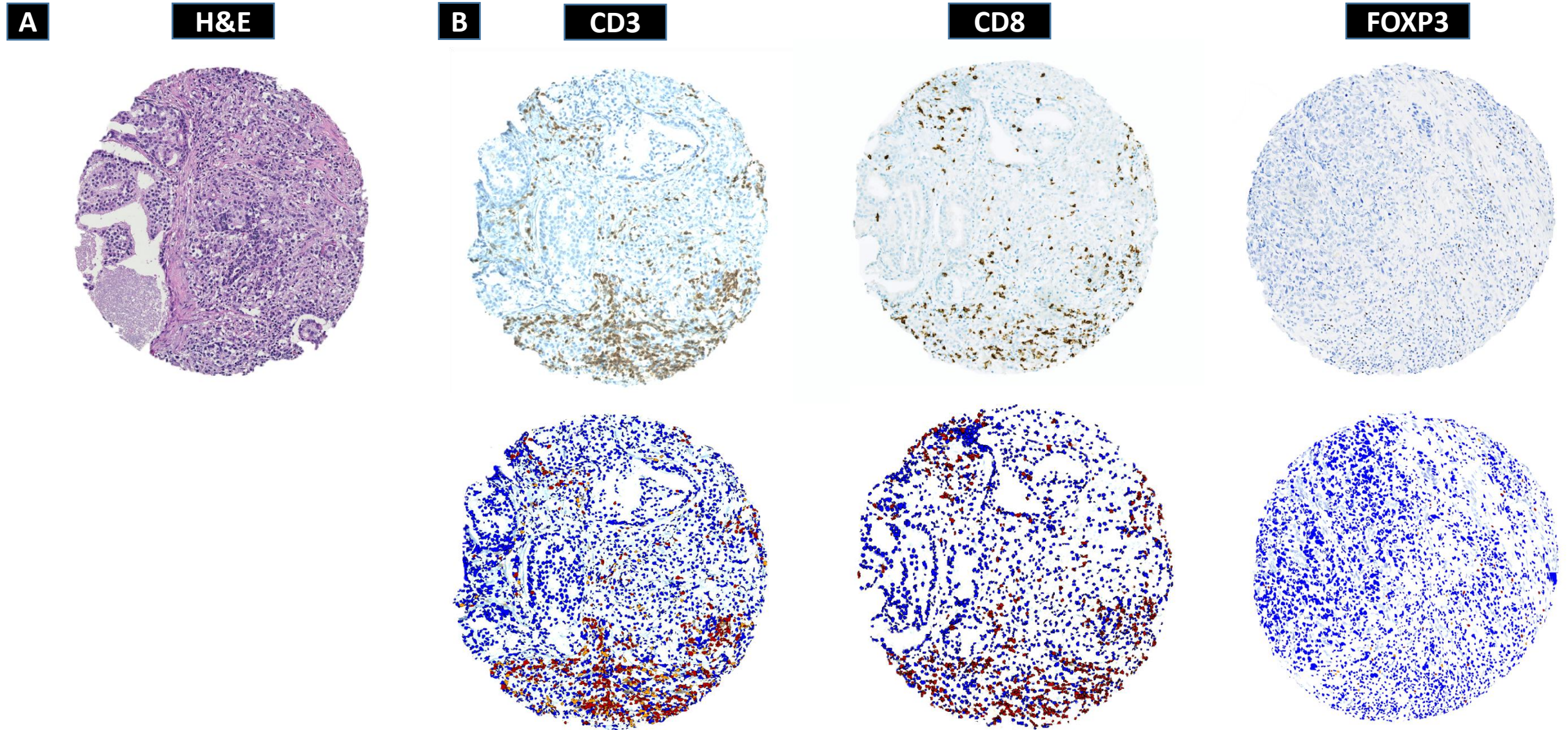
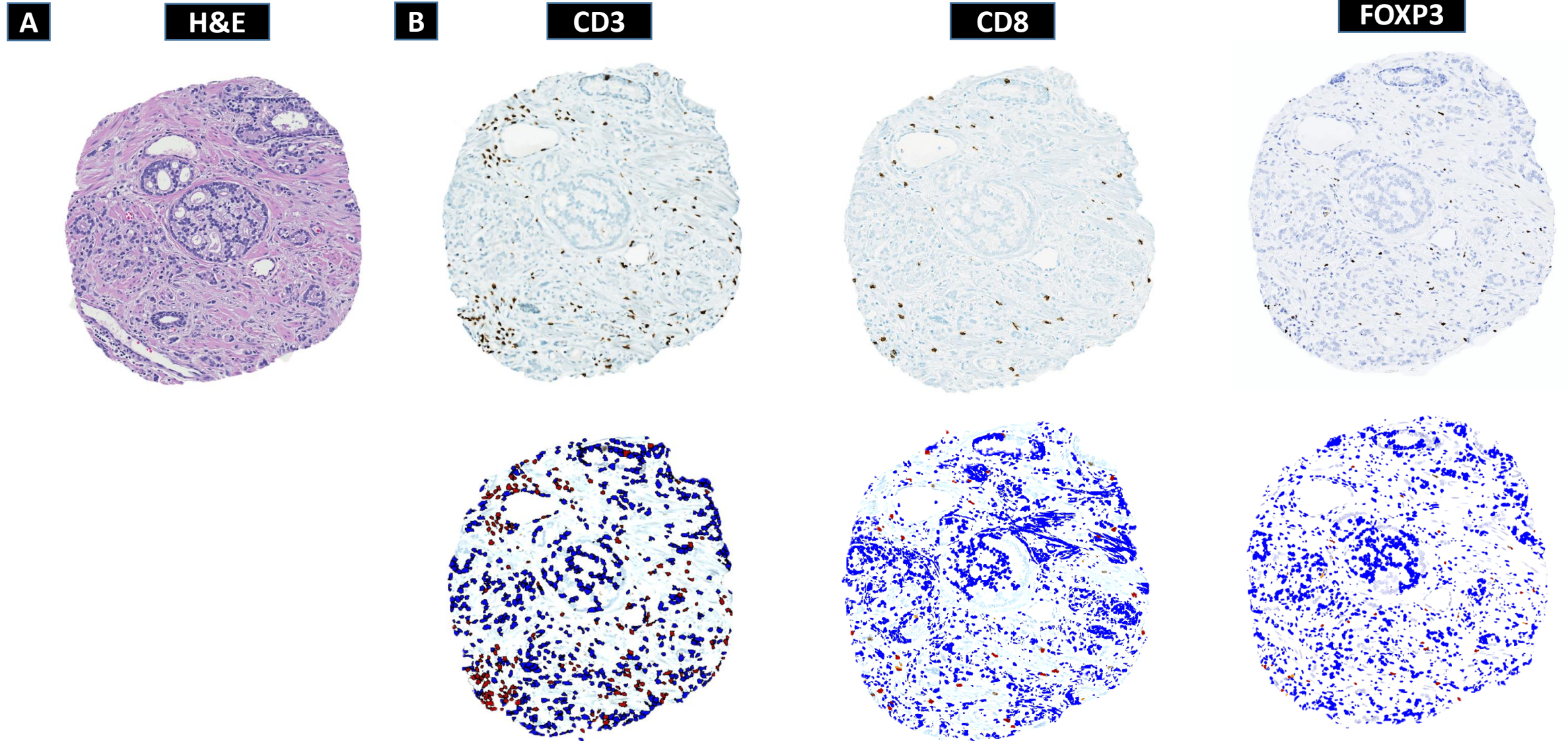


Supplementary Figure 1. Gleason 5 pattern TMA set: Representative (A) H&E staining and (B) lymphocyte immunostaining in prostate tumor on tissue microarray cores. Immunostaining for CD3, CD8, and FOXP3 identifies respective specific subsets of tumor-infiltrating lymphocytes in prostate tumor (top). Aperio image software identifies CD3+ T cells, CD8+ T cells and FOXP3+ T cells (red) in selected tumor regions and surrounding tumor and stromal nuclei (blue; bottom).

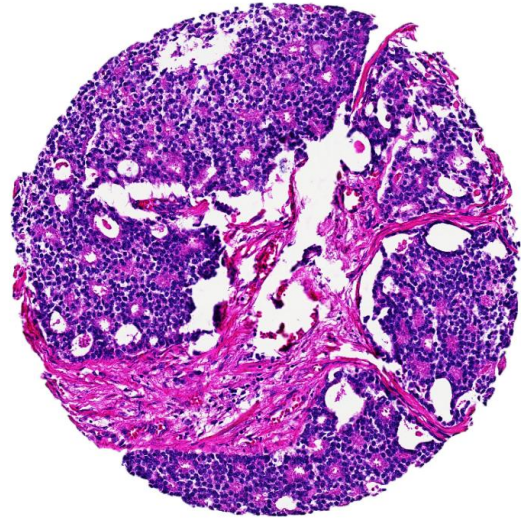


Supplementary Figure 2. Int-high risk TMA set: Representative (A) H&E staining and (B) lymphocyte immunostaining in prostate tumor on tissue microarray cores. Immunostaining for CD3, CD8, and FOXP3 identifies respective specific subsets of tumor-infiltrating lymphocytes in prostate tumor (top). Aperio image software identifies CD3+ T cells, CD8+ T cells and FOXP3+ T cells (red) in selected tumor regions and surrounding tumor and stromal nuclei (blue; bottom).

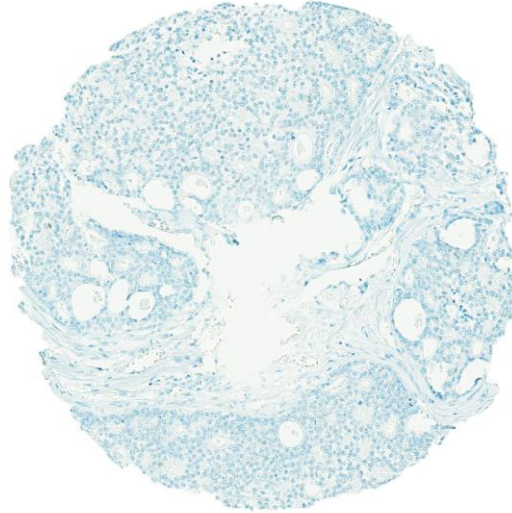


Supplementary Figure 3. Representative p53 immunostaining and matching H&Es on tissue microarray cores. p53 nuclear accumulation (p53+) signifies *TP53* missense mutation. All photomicrographs are reduced from 200x.

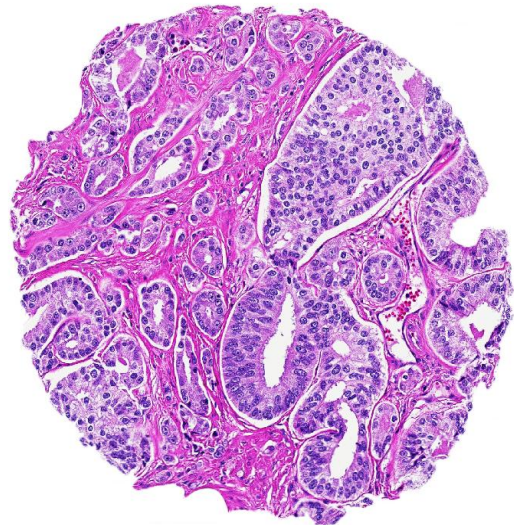
H&E



P53-



H&E



P53+

