

## Supplementary Figures for

# Personalized combination nano-immunotherapy for robust induction and tumor infiltration of CD8+ T cells.

Kyung Soo Park<sup>1,2,4</sup>, Juttaek Nam<sup>2,3,4</sup>, Sejin Son<sup>2,3</sup>, James J. Moon<sup>1,2,3,\*</sup>

<sup>1</sup> Department of Biomedical Engineering, University of Michigan, Ann Arbor, Michigan 48109, USA

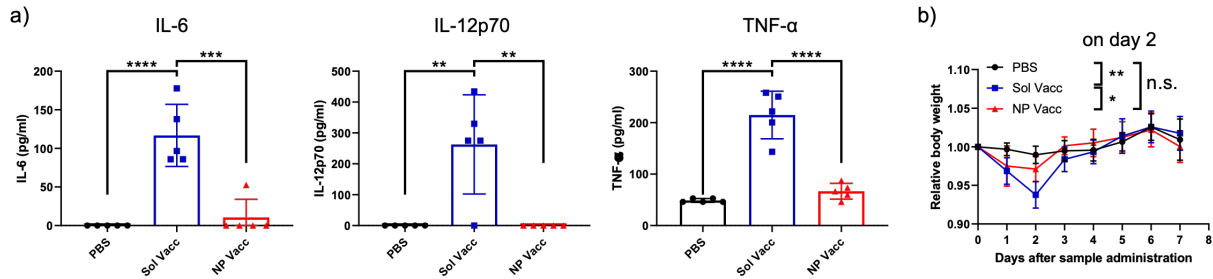
<sup>2</sup> Biointerfaces Institute, University of Michigan, Ann Arbor, Michigan 48109, USA

<sup>3</sup> Department of Pharmaceutical Sciences, University of Michigan, Ann Arbor, Michigan 48109, USA

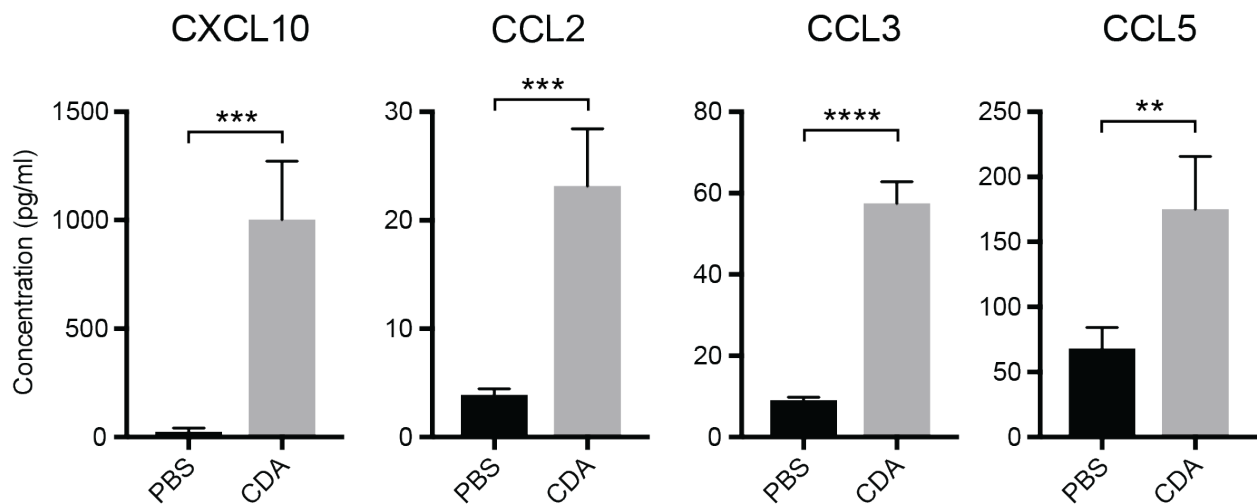
<sup>4</sup> Authors contributed equally.

\*Corresponding author.

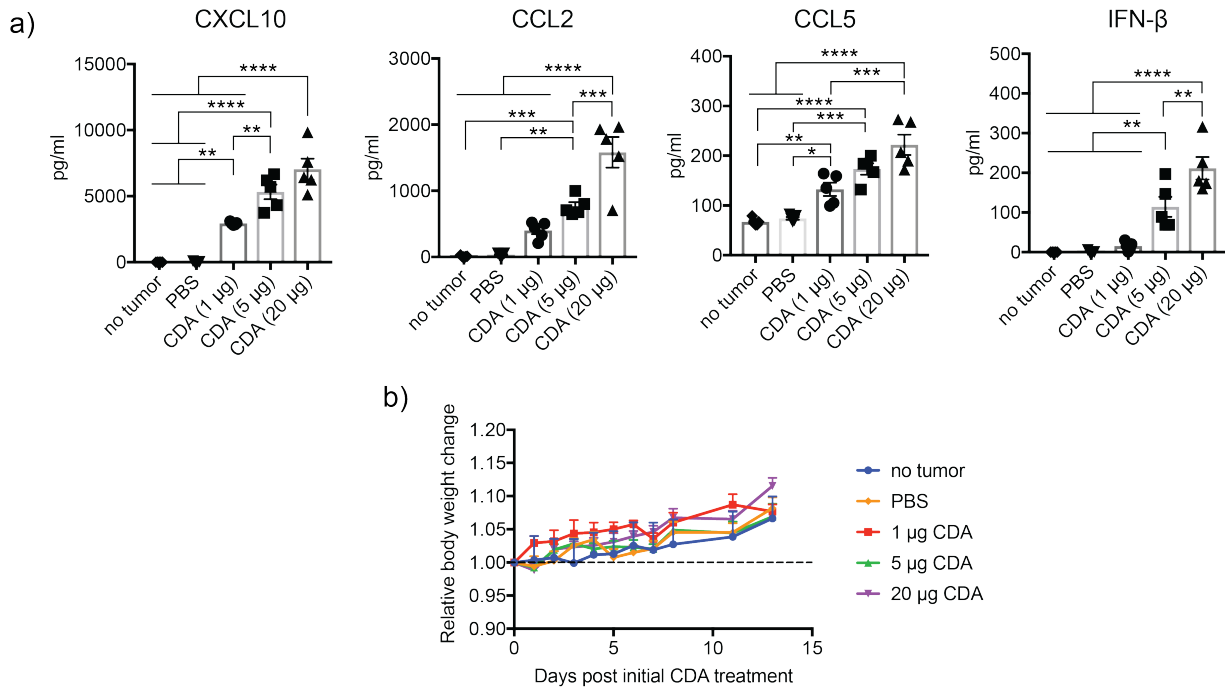
E-mail address: [moonjj@med.umich.edu](mailto:moonjj@med.umich.edu)



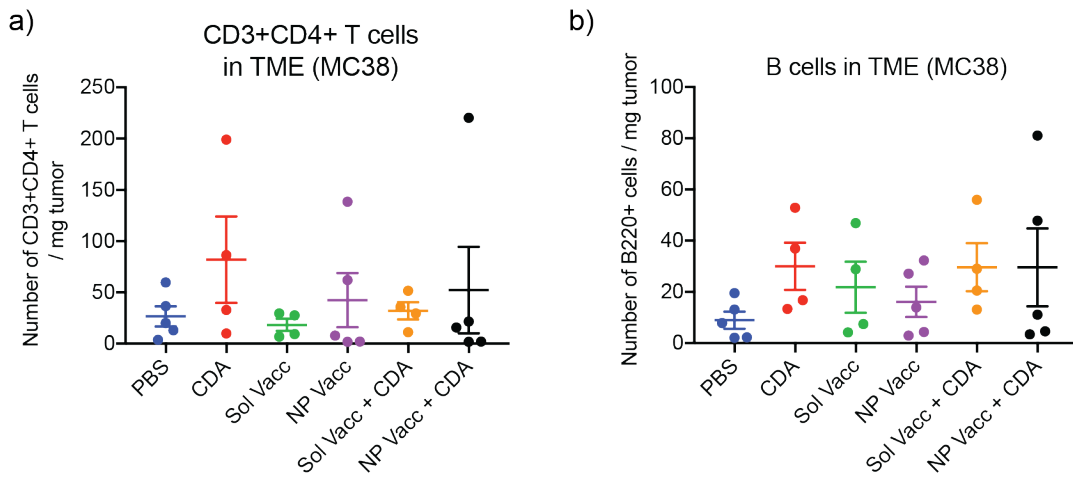
**Supplementary Figure 1. Changes in serum cytokine levels and body weight in MC38 tumor-bearing mice after subcutaneous administration of 1x vaccine dose.** a) Serum cytokine levels were measured 1 day after PBS, Sol Vacc, or NP Vacc treatment. b) Body weight change was measured overtime after sample administration. Statistical analyses were performed on day 2 data using one-way ANOVA, followed by Bonferroni post hoc test (\* $p < 0.05$ , \*\* $p < 0.01$ ).



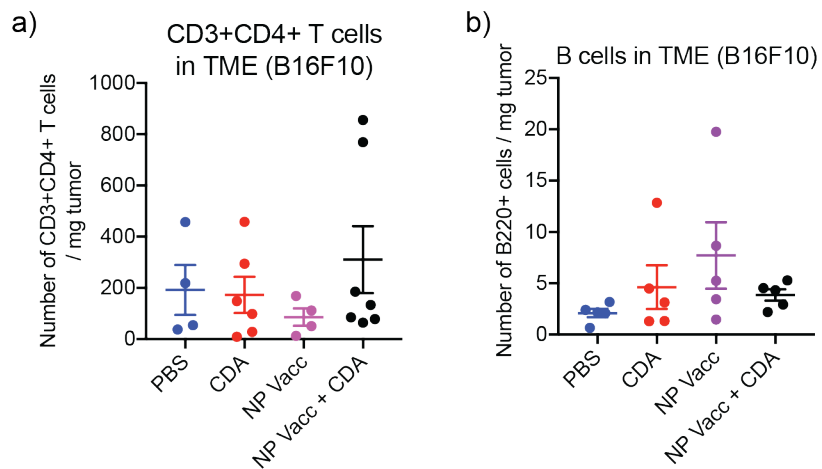
**Supplementary Figure 2. Chemokine secretion by mouse BMDCs *in vitro* after CDA treatment.** CDA (5  $\mu\text{g/ml}$ ) was treated to mouse BMDCs, followed by incubation for 6 hours at 37°C with 5%  $\text{CO}_2$ . Culture media were analyzed for the levels of chemokines by ELISA. Data are presented as mean  $\pm$  SEM. \*\* $p < 0.01$ , \*\*\* $p < 0.001$  and \*\*\*\* $p < 0.0001$ , analyzed by student's t-test.



**Supplementary Figure 3. Changes in serum chemokines and cytokines and body weight after intratumoral injection of CDA in MC-38 tumor-bearing mice.** a) Serum chemokine/cytokine levels after intratumoral injection of CDA. Blood samples from MC-38 tumor-bearing C57BL/6 mice were collected 3 h after intratumoral CDA injection. Mice with no tumor did not receive CDA injection and were included as a complete negative control. b) Body weight change after CDA injection. For 1 and 5  $\mu$ g CDA, mice received injections every 3 days for three times and for 20  $\mu$ g, only one injection was performed. Initial injections were done on day 8 post tumor injection. Data are presented as mean  $\pm$  SEM. \*\*p < 0.01, \*\*\*p < 0.001 and \*\*\*\*p < 0.0001, analyzed by one-way ANOVA followed by Tukey's HSD multiple comparison post hoc test.



**Supplementary Figure 4.** Numbers of a) CD4+ T cells and b) B cells infiltrating MC38 TME were analyzed after mice were treated as in **Figure 4a**.



**Supplementary Figure 5.** Numbers of a) CD4+ T cells and b) B cells infiltrating B16F10 TME were analyzed after mice were treated as in **Figure 5a**.