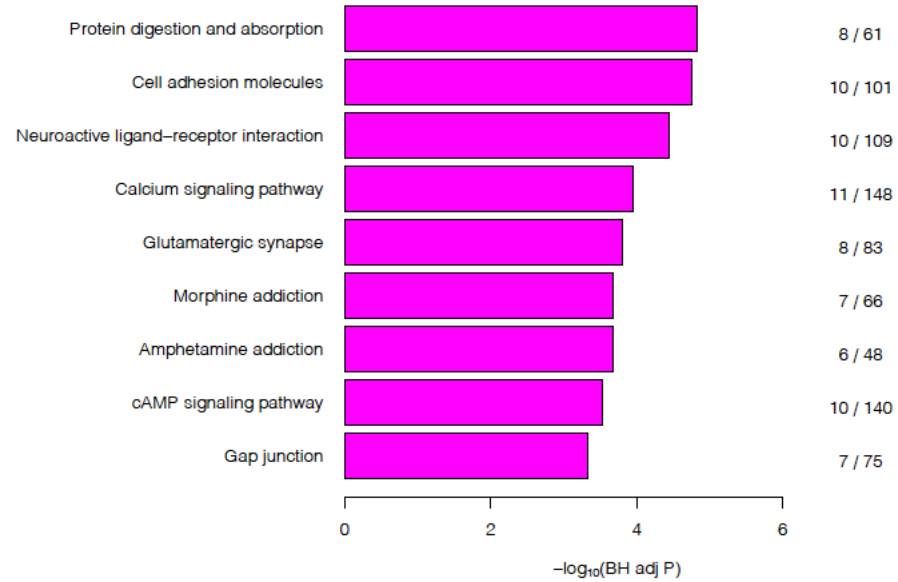


Fig S1

A



B

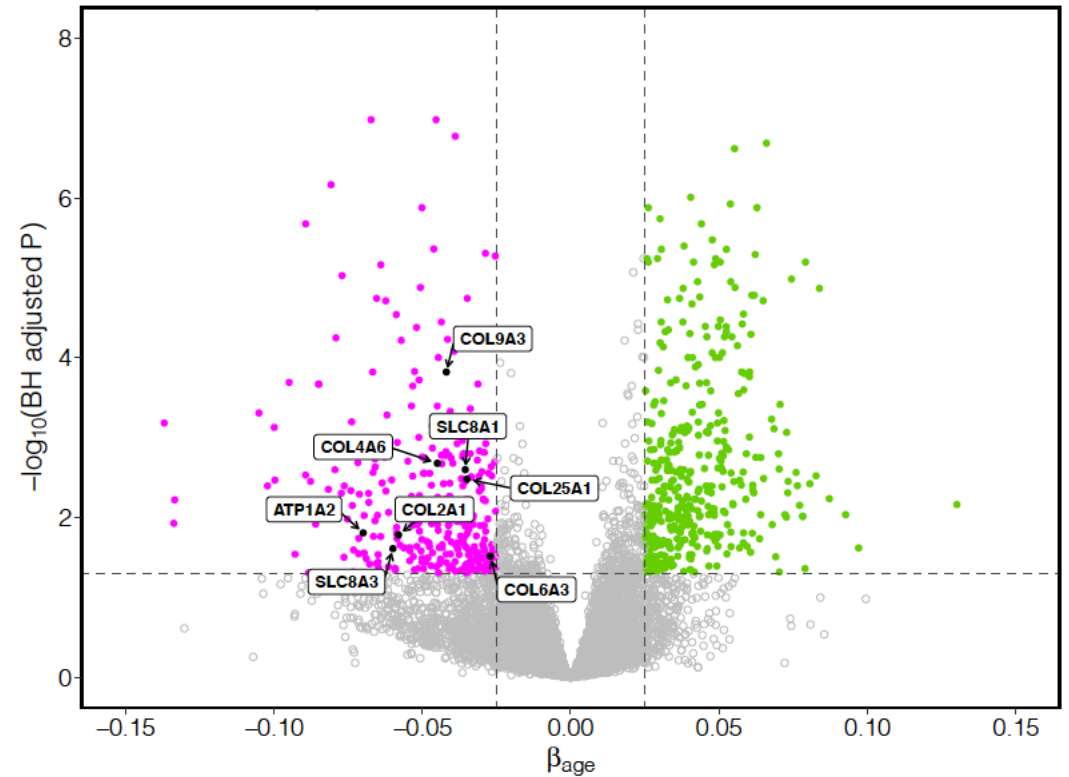


Fig. S1. RNA-seq of RPE reveals many pathways are transcriptionally down-regulated with increasing human age. (A) The top most significantly enriched pathways with down-regulated SCGs. All pathways shown have a BH adjusted $P < 0.05$. Fraction represents the number of down SCGs in the pathway over the total number of genes in the pathway. (B) Volcano plot showing up-regulated SCGs in green and down-regulated in magenta. Genes in the *protein digestion and absorption* KEGG pathway are labelled.